



2015 CAT
AP1000F
ASPHALT PAVERS

INSPECTION DETAILS

Inspection Type	Marketing
Inspection Form	Standard
Inspection #	10146429
Inspection Status	Inspected
Created	09/04/24 16:59:46
Updated	09/05/24 08:28:38
Created By	Fuentes, David A.
Inspector	Fuentes, David A.
Reviewers	Fuentes, David A.
Salesperson	Schultis, Derrick R.
Engine Serial #	D8T00488
Last Preventative Maintenance	Aug 27, 2024
Serial #	AC400109
SMU / Hours	5,079
Location	AZ, United States



FEATURES

General

- Crown Control
 - Push Roller
- Generator
 - Screed Heating System
- Product Link
 - Washdown Tank

Regulatory

- Emissions Level
- Regulatory Status
- Ultra Low Sulfur Diesel Fuel

CONDITION



Good



Fair



Poor

Approved Repair

GENERAL CONDITION

Body



Frame



General



Logged / Active Codes
NO

Machine Starts and is Operable
YES

Tires are Aired Up and Drivable
YES

GENERAL APPEARANCE

Bumper



Eng. Enclose Hood / Stack



Fuel Tank



Grab Irons



Leveling Arm



Main Frame Welds



Paint



Paint is faded

Pre-Cleaner Bowl



Radiator Grill & Shroud



Small dent and rip



Screed Frame



Steps / Ladder



SAFETY ITEMS

Back Up Alarm



Horn



Seat Belt / Date



08/24



Parking Brake Functioning
YES

Safety Decals In Place
YES

Safety Decals Legible
YES

Safety Locks / Pins

YES

OPERATOR STATION

Armrests ●●●	Dash Console ●●●	EMS Panel / Warnings ●●●
Gauges ●●●	Hour Meter - OPERATOR STATION ●●●	📷1 Hydraulic Controls ●●●
Monitor Panel / Display ●●●	Seat Cushions / Suspension / Type ●●●	Switches ●●●
Current O&MM NO	Current Safety Manual NO	

ENGINE

Belts / Pulleys ●●●	📷1 Engine Oil Level / Condition ●●●	Engine Supports / Mounts ●●●
Exhaust / Muffler / Stack ●●●	Fuel Injection System ●●●	Governor ●●●
Intake / Air Filters ●●●	Oil Filter Condition / Service Hours ●●●	Operating Condition - ENGINE ●●●
Turbocharger / Blower ●●●		
Apparent Other Engine Damage NO	Blow By NO	Emissions Decal Legible NO 📷1
Fuel Leaks NO	Has Engine been rebuilt? NO	Knocking NO
Oil Leaks NO	Water in Oil NO	
Engine S/N D8T00488	Hours On Engine 5079	Oil Pressure (H/L/N) Normal

Smoke Color (B/D/L/W)
Normal

EMISSIONS

Aftertreatment Heat Shields /
Guards
●●●

DEF Level / Condition
●●●

DEF Lines / Wiring
●●●

Diesel Exhaust Fluid (DEF) Tank
●●●

Diesel Particulate Filter (DPF)
Condition / Service Hours
●●●

Aftertreatment System Codes
NO

Leaks / Type
NO

Notes - EMISSIONS
TIER 4 - FINAL

COOLING SYSTEM

Anti-Freeze Level / Color /
Condition
●●●
Red

Belts / Pulleys - COOLING
SYSTEM
●●●

Coolers
●●●

Fan
●●●

Fan Drive / Type
●●●

Fan Shrouds / Guards
●●●

Hoses / Tubes
●●●

Radiator
●●●

Water Pump
●●●

Compression in Radiator
NO

Coolant Leaks
NO

Oil in Anti-Freeze
NO

ELECTRICAL, STARTING AND CHARGING SYSTEM

Alternator
●●●

Batteries / Cables
●●●

Pre-Heater
●●●

Starter
●●●

Wiring
●●●

PAVER / SCREED / CONVEYOR

Auger Bearings
●●●

Auger Drive Chains / Sprockets
●●●

Auger Motors
●●●

Auger Segments
●●●

📷4
Conveyor Drive Chains / Sprockets
●●●

📷3
Conveyor Pumps & Motors
●●●

Crown Adjustment
●●●

Endgate Frames
●●●

Endgate Jack Screws
●●●

Extension Bushings
●●●

Extension Chrome Guide Tubes
●●●

📷4
Extension Cylinders
●●●

Extension Frames
●●●

Hopper / Hopper Wings
●●●

Hopper Cylinders
●●●

Hopper Flashing
●●●

📷3
Hopper Floor Plates
●●●

Hose Lines
●●●

Metering Gates
●●●

Power Module
●●●

Pumps & Valves
●●●

Screed Burners / Heating Elements
●●●

Screed Frames
●●●

Screed Plate
●●●

📷4

Ski Leveling
●●●

Truck Hitch / Push Roller
●●●

📷1
Vent System
●●●

Ventilation Fumes Extractor Fan
●●●

Ventilation Fumes Tunnel / Stack
●●●

UNDERCARRIAGE

Drive Tires
●●●

Front Bogies
●●●

Wheels
●●●

FINAL DRIVES

Planetaries / Diff



MARKETING PHOTOS (8)



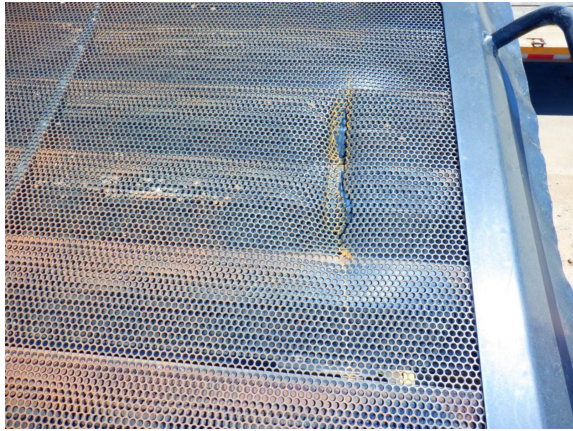


LINE ITEM PHOTOS (24)

Radiator Grill & Shroud



Small dent and rip



Seat Belt / Date



08/24



Hour Meter - OPERATOR

STATION



Belts / Pulleys



Emissions Decal Legible NO



Auger Segments

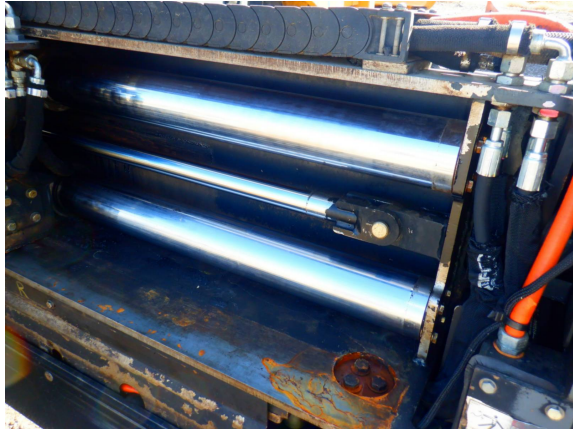




Conveyor Drive Chains /
Sprockets
●●●



Extension Chrome Guide Tubes

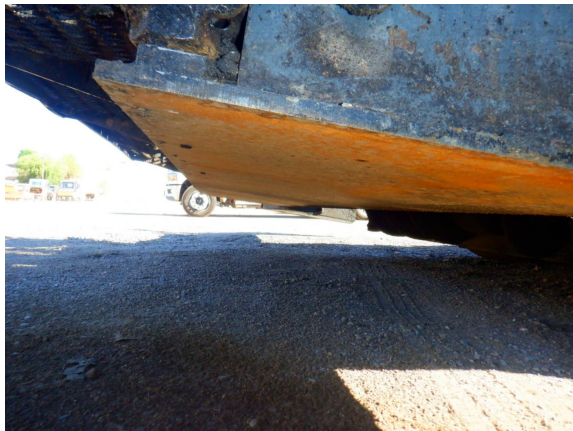
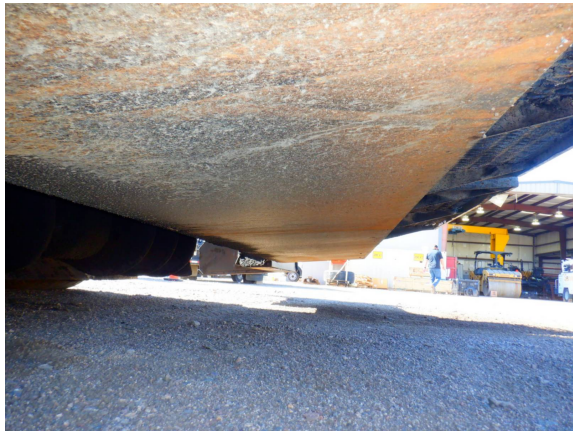


Hopper Flashing





Screed Plate



Truck Hitch / Push Roller

