



2015 CAT
140M3
MOTOR GRADERS

INSPECTION DETAILS

Inspection Type	Marketing
Inspection Form	Standard
Inspection #	10153354
Inspection Status	Completed
Created	10/01/24 16:54:09
Updated	10/02/24 12:03:09
Created By	Calderas, Marco
Inspector	Calderas, Marco
Reviewers	Calderas, Marco
Salesperson	Schultis, Derrick R.
Stock #	E197134
Serial #	N9M00117
SMU / Hours	7,516
Location	Eloy, AZ, United States



FEATURES

General

- Air Conditioner
- Beacon
- Fenders
- Mirrors
- Ripper - Multi-Shank
- Throttle Lock
- Air Suspension Seat
- Defroster Fan
- Front Hitch/Lift
- Moldboard Size - 14'
- ROPS - Enclosed
- Arrangement, Snow
- Differential Lock
- Lighting
- Radio - AM FM Radio
- Steering Type - Joystick

Regulatory

- Emissions Level - EPA - EPA TIER 4f
- Emissions Level - EU - EU STAGE IV
- Ultra Low Sulfur Diesel Fuel

CONDITION

Good

Fair

Poor

Approved Repair

GENERAL CONDITION

Body <div><div></div><div></div><div></div></div>	Frame - GENERAL CONDITION <div><div></div><div></div><div></div></div>	General <div><div></div><div></div><div></div></div>
ET Product Status Report Download YES	Logged / Active Codes NO	Machine Starts and is Operable YES
S.O.S. (All Compartments) NO	Tires are Aired Up and Drivable YES	Visible Oil Leaks NO

GENERAL APPEARANCE

Battery Box <div><div></div><div></div><div></div></div>	Bumper <div><div></div><div></div><div></div></div>	Cab or Canopy <div><div></div><div></div><div></div></div>
Decals <div><div></div><div></div></div> Scratches and dry cracks	<div><div></div></div> 4 Draw Bar <div><div></div><div></div></div> Needs shims removed to adjust trunnion	<div><div></div></div> 1 Engine Enclosures <div><div></div><div></div><div></div></div>
Fenders <div><div></div><div></div><div></div></div>	Front Frame Welds <div><div></div><div></div><div></div></div>	Fuel Tank <div><div></div><div></div><div></div></div>
Grab Irons <div><div></div><div></div><div></div></div>	Hood <div><div></div><div></div><div></div></div>	Paint <div><div></div><div></div></div> Has fade and minor scratches <div><div></div></div> 2
Pre-Cleaner Bowl <div><div></div><div></div><div></div></div>	Radiator Grill <div><div></div><div></div><div></div></div>	Rear Frame Welds <div><div></div><div></div><div></div></div>
Sheet Metal <div><div></div><div></div><div></div></div>		
Cleaning Required NO		

Notes - GENERAL APPEARANCE 6

Has snow wing attachment on right side of machine. Has lift on front of machine. Leaks at rod seal on cylinder

SAFETY ITEMS

Back Up Alarm



Beacon / Strobe



Camera(s)



1

Horn



ROPS



Seat Belt / Date



1

Parking Brake Functioning

YES

ROPS Certification Plate

YES

Safety Decals In Place

YES

Safety Decals Legible

YES

Safety Locks / Pins

YES

Service Brakes Functioning

YES

OPERATOR STATION

Air Conditioner



Armrests



Cab Filter / Heat Vent Louvres



Dash Console



Door Latches / Hinges / Seals



Floor Boards / Mats



Gauges



Headliner



Heater / Defroster



Hour Meter - GAUGES,
OPERATION STATION, CONSOLE



Hydraulic Controls



Interior Lights



Interior Plastic / Fabric



Mirrors



Monitoring Display



Pans/Guards



Radio



Seat Cushions / Suspension /
Type



Switches



Transmission Controls



Windows



Windshield Wipers



Washers are inoperable. Wipers on doors stop in up position when turned off.

Current O&MM

YES

Cover is torn



Current Safety Manual

YES



ENGINE

Belts / Pulleys - ENGINE



Engine Oil Level / Condition



Engine Supports / Mounts



Exhaust / Muffler / Stack



Fuel Injection System



Governor



Intake / Air Filters



Operating Condition - ENGINE



Turbocharger / Blower



Blow By

NO

Fuel Leaks

NO

Knocking

NO

Oil Leaks

NO

Service Needed

NO

Water in Oil

NO

Oil Pressure (H/L/N)

Normal

Smoke Color (B/D/L/W)

Normal

EMISSIONS

Aftertreatment Heat Shields / Guards



DEF Lines / Wiring



Diesel Particulate Filter (DPF) Condition / Service Hours



Aftertreatment System Codes

NO

Leaks / Type

NO

COOLING SYSTEM

Anti-Freeze Level / Color / Condition <div><div></div><div></div><div></div></div>	Belts / Pulleys - COOLING SYSTEM <div><div></div><div></div><div></div></div>	Coolers <div><div></div><div></div><div></div></div>
Fan <div><div></div><div></div><div></div></div>	Fan Drive / Type <div><div></div><div></div><div></div></div>	Fan Shrouds / Guards <div><div></div><div></div><div></div></div>
Hoses / Tubes <div><div></div><div></div><div></div></div>	Radiator <div><div></div><div></div><div></div></div>	Water Pump <div><div></div><div></div><div></div></div>
Compression in Radiator NO	Coolant Leaks NO	Oil in Anti-Freeze NO
Standard Radiator YES		

ELECTRICAL, STARTING AND CHARGING SYSTEM

Alternator <div><div></div><div></div><div></div></div>	Batteries / Cables <div><div></div><div></div><div></div></div>	Product Link / Condition <div><div></div><div></div><div></div></div>
Starter <div><div></div><div></div><div></div></div>	Wiring <div><div></div><div></div><div></div></div>	Work Lights <div><div></div><div></div></div> <div>RIGHT REAR CAB LIGHT IS INOPERABLE</div>
Active Codes NO	Ether Aid YES WITH BOTTLE	Jump Start Terminal YES
Signal Lights YES		

TRANSMISSION

Case - TRANSMISSION <div><div></div><div></div><div></div></div>	Controls - TRANSMISSION <div><div></div><div></div><div></div></div>	Cooler <div><div></div><div></div><div></div></div>
---	---	--

Lines / Fittings - TRANSMISSION 1
HAS DRY RESIDUE ON HOSE AT LOWER SECTION. NOT LEAKING. CHECK AND ADVISE.

Operating Condition - TRANSMISSION

Pump - TRANSMISSION

Seals

Transmission - Forward Shifts

Transmission - Reverse Shifts

Valves

Leaks - TRANSMISSION
NO

Powershift
YES

Transmission - Noisy
NO

STEERING

Articulate P & B

King Pins

Lines / Fittings

Steering Cylinder

Steering Frame

Steering Linkage

Steering Operating Condition

Steering Pump

Steering Valve

Tie Rods / Rod Ends

Wheel / Joystick

Joystick

Wheel Lean Cylinder - STEERING

BRAKE

Accumulators

Control Valve

Parking Brake Operation

Pedal

Service Brake Operation

DRIVECHAIN / TANDEMS

Differential

Differential Lock / Operation

Drivetrain / Tandem Leaks

Oscillating Hubs / Oil Level



Planetary



Right side has oil residue. Not dripping. Clean and advise



1

Tandem Housing / Drive Chains



Wheel Lugs & Rims



HYDRAULICS

Blade Cushion



Circle Drive Box



Circle Side Shift Cylinder



Cylinder Mounts / Pins



Has movement on both sides yoke bushings and cylinder mounts



1

Hydraulic Lines / Fittings



Hydraulic Pump



Hydraulic Valves



Lift Cylinders



Linkage



Operating Condition -
HYDRAULICS



Pump Drive Shaft



Saddle Pin / Actuator



Side Shift Cylinder



Wet with oil inside of blade area. unable to locate leak. Check and advise. Seal kit quoted



1

Tank / Sight Glass / Cap



1

Tip Cylinder



Leaks - HYDRAULICS
NO

BLADE

Circle A Frame



Circle Frame



Circle Shoes / Inserts



Cutting Edge



Cylinder Balls / Caps



Needs shims removed to adjust on all 4 balls



3

Face / Moldboard



Frog / Base Edge
●●●

Moldboard Tip Brackets / Inserts 📷1
●●
Slide brass is worn

Ring Gear
●●●

Saddle
●●●

Tip Bracket Pivots / Bearings 📷1
●●
Has movement on both sides

RIPPER

Beam
●●●

Brackets / Studs
●●●

Cylinders
●●●

Frame
●●●

Lines / Fittings - RIPPER
●●●

Pins / Bushings
●●●

Shanks / Ripper (GET)
●●●

📷3 Shanks / Scarifier (GET)
●●
8 out of 9 are worn

TIRES

	Make / Serial#	Tread Depth in 1/32"	% Life Remaining	Recapped	Tread Cuts/Chunks	Side Cuts Section
Left Center	Michelin	25	60	NO	YES	YES
Left Front	Michelin	19	49	NO	YES	YES
Left Rear	Michelin	10	20	NO	YES	YES
Right Center	Michelin	24	56	NO		
Right Front	Michelin	4	8	NO	YES	YES
Right Rear	Michelin	20	54	NO	YES	YES

Radial
YES

Tire Size - TIRES

14.00R24

MARKETING PHOTOS (31)











CAT CATERPILLAR
CAT CATERPILLAR

MODEL NUMBER 140M3

PRODUCT IDENTIFICATION NUMBER *CAT0140MKN9M00117*

MODEL NUMBER

SYED419F1	3816493
CM3811100	3816660

CATERPILLAR INC.
PEORIA, IL 61629
USA
MADE IN USA
OF DOMESTIC AND
FOREIGN COMPONENTS

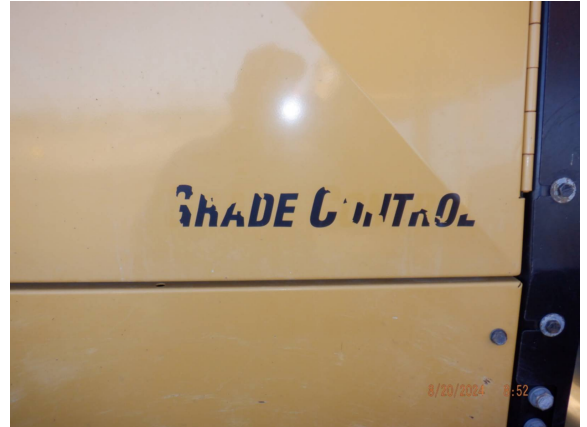
259-5889 4

LINE ITEM PHOTOS (50)

Decals



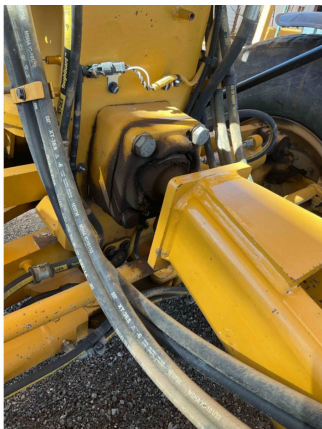
Scratches and dry cracks



Draw Bar



Needs shims removed to adjust
trunnion



Paint



Has fade and minor scratches



Camera(s)



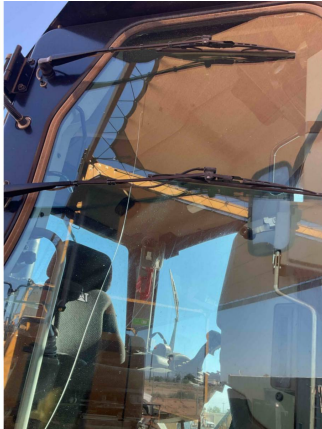
Seat Belt / Date



Windshield Wipers



Washers are inoperable. Wipers on doors stop in up position when turned off.



Current O&MM

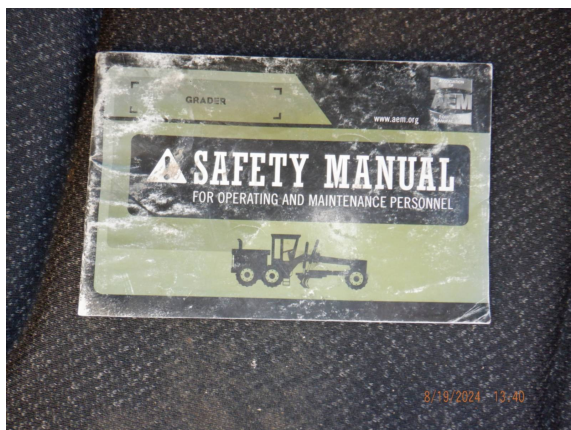
YES

Cover is torn



Current Safety Manual

YES



Work Lights



RIGHT REAR CAB LIGHT IS
INOPERABLE



Lines / Fittings - TRANSMISSION



HAS DRY RESIDUE ON HOSE AT
LOWER SECTION. NOT
LEAKING. CHECK AND ADVISE.



Planetary

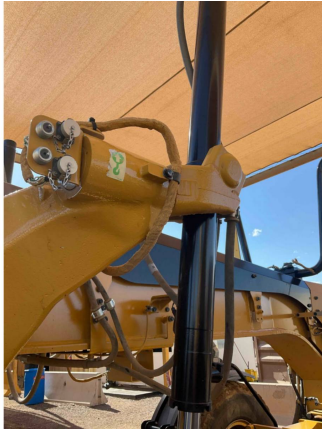


Right side has oil residue. Not
dripping. Clean and advise



Cylinder Mounts / Pins

●●
Has movement on both sides
yoke bushings and cylinder
mounts



Side Shift Cylinder

●●
Wet with oil inside of blade
area. unable to locate leak.
Check and advise. Seal kit
quoted



Tank / Sight Glass / Cap

●●●



Cylinder Balls / Caps



Needs shims removed to adjust
on all 4 balls



Moldboard Tip Brackets / Inserts



Slide brass is worn



Tip Bracket Pivots / Bearings



Has movement on both sides








Shanks / Ripper (GET)



Notes - GENERAL APPEARANCE

Has snow wing attachment on right side of machine. Has lift on front of machine. Leaks at rod seal on cylinder





	Make / Serial#	Tread Depth in 1/32"	% Life Remaining	Recapped	Tread Cuts/Chunks	Side Cuts Section
Left Center	Michelin	25	60	NO	YES	YES
	<div>   </div>					
	<div>  </div>					
	<hr/>					
	Make / Serial#	Tread Depth in 1/32"	% Life Remaining	Recapped	Tread Cuts/Chunks	Side Cuts Section
Left Front	Michelin	19	49	NO	YES	YES
	<div>   </div>					



	Make / Serial#	Tread Depth in 1/32"	% Life Remaining	Recapped	Tread Cuts/Chunks	Side Cuts Section
Left Rear	Michelin	10	20	NO	YES	YES



	Make / Serial#	Tread Depth in 1/32"	% Life Remaining	Recapped	Tread Cuts/Chunks	Side Cuts Section
Right Center	Michelin	24	56	NO		
	<div>   </div>					
	<div>  </div>					

	Make / Serial#	Tread Depth in 1/32"	% Life Remaining	Recapped	Tread Cuts/Chunks	Side Cuts Section
Right Front	Michelin	4	8	NO	YES	YES
	<div>   </div>					



	Make / Serial#	Tread Depth in 1/32"	% Life Remaining	Recapped	Tread Cuts/Chunks	Side Cuts Section
Right Rear	Michelin	20	54	NO	YES	YES

