



2008 CAT  
365CL  
TRACK EXCAVATORS

INSPECTION DETAILS

Inspection Type	Marketing
Inspection Form	Excavators
Inspection #	10169603
Inspection Status	Inspected
Created	12/13/24 00:06:03
Updated	01/07/25 11:09:09
Created By	Akutey, Solomon
Inspector	Akutey, Solomon
Reviewers	Akutey, Solomon
Salesperson	Heath, Jason
Serial #	MCS00473
SMU / Hours	14,111
Location	ELKO, NV, United States



FEATURES

General

- Air Conditioner
- Car Body - Standard
- Hand and Foot Control
- Radio - AM FM Radio
- Beacon
- Engine Enclosures
- Lighting
- Stick
- Boom - 1 Piece
- Fire Extinguisher
- Mirrors
- Straight Travel Pedal

Regulatory

- Ultra Low Sulfur Diesel Fuel

## CONDITION



Good



Fair



Poor

Approved Repair

## GENERAL APPEARANCE

Bumper



Bent walkway bumpers



Cab



Three 10 mm holes drilled in the back, does not affect the structure, dirty



Counterweight



Faded paint, scratches



Engine Doors



Engine Enclosure Panels



One missing panel under the engine, few bented ones



Fuel Tank



Missing strainer 303-9933



Grab Handles / Handrails



Hood



Hood Panels



Main Frames



Paint & Decals



Peeling/scratches



Plastic Covers



Faded, loose, dirty



Radiator Enclosure / Grill



Sheet Metal Panels



Steps / Ladder



Minor dents/different style steps



Storage Compartments



Underbody Guarding Plates



Track motor hose guards are removed/missing. few in the bucket



Cleaning Required

**YES**

S.O.S. Taken

**NO**

Taken less than 10 hrs ago

Service Required?

**YES**

Notes - GENERAL APPEARANCE

Fair to rough condition, missing S/N tag on cab. One on base of boom

## SAFETY ITEMS

Alternate Exit



No hammer



1

Fire Extinguisher



Horn



Implement Safety Lockout



Rear View Mirrors



Reflectors / Reflective Labels



Faded



1

Seat-Belt



Expired 235-9020



1

Swing Brake



Binding, no swing

Travel Alarm



Warning / Safety Labels



Missing decals in cab

ROPS

**YES**

ROPS Certification Label

**NO**

## OPERATOR STATION

Air Conditioner



Could not run it for long due to low coolant warning and high oil level engine

Cab Circulating Fans



Cab Interior Trim



Very dirty, needs cleaning



1

Controls-Throttle



Doors / Latches



Floor Boards



Dirty

Gauges



Glass & Windows



Skylight and windows are foggy/stained



1

Heater



Could not run it for long due to low coolant warning and high oil level engine

Hour Meter



It been replaced but could not read previous hrs tag. 14111 hrs on PSR



1

Interior Lights



Does not work



1


Joystick Console




Side covers, boot



1

Monitor / Warning Alarm  
  
1/4 inch black ink dot, pad cover missing




Seat / Suspension / Arm Rests  




Switches  
  
Fair



Windshield Wipers  
  
Does not work

Cameras  
**NO**

Current O&MM  
**NO**

Current Parts Manual  
**NO**

Current Safety Manual  
**NO**

ECM Downloaded  
**YES**

Radio  
**YES**


## ENGINE

Air Cleaners  






Belts & Pulleys  






Engine Air Inlet  
  
Broken ether line, possible dirt entry





Engine Block / Cylinder Head  



Engine Exhaust  


Engine Front / Rear Housings  
  
Oil leaks

Engine Operating Condition  
  
Very thin oil viscosity, ts transfer

Engine Supports  


Fuel Lines & Filters  


Turbocharger / Blower  


Blow By  
**NO**

Emission Label  
**YES**



Engine Noises?  
**NO**

Engine Oil Leaks  
**YES**



Fluid Levels OK?  
**NO**  
Level is over, possible transfer,  
broken dipstick 275-6598



Water in Oil  
**NO**

Anti-Freeze Color  
Red

Notes - ENGINE  
Did not run it for long due to oil  
viscosity and increase oil level

Oil Pressure (H/L/N)  
58/65 psi





Smoke (B/D/L/W)  
Normal

---

## COOLING SYSTEM

Coolers



See comment on radiator

Engine Cooling Tubes & Hoses



1

Fan



Fan Drive



Radiator



Coolant leak, bottom of radiator



1

Radiator Shroud / Fan Guard



Water Pump



Compression In Radiator?

**NO**

Cooling System Leaks

**YES**

Heater hose/coolant leak,  
bottom of radiator



1

Notes - COOLING SYSTEM

I added 2 gallons of coolant

---

## ELECTRICAL, STARTING AND CHARGING SYSTEM

Alternator



Batteries / Cables



Battery Compartment



Beacon



1

Fuse / Circuit Breaker Panel



Missing cover



1

Lighting



Right side boom light does not work



1

Starter



covered with oil



1

Wiring



greasy/oily



1

Ether Starting Aid

**NO**

No cyl. broken line

## HYDRAULICS

### Boom Lift Cylinders



2

Both leaking, left side is worse 225-4646 x 2

### Bucket Cylinder



### Controls-Hydraulic



1

Loose covers, right travel lever is very stiff/sticky

### Controls-Travel & Steering



1

Loose covers, right travel lever is very stiff/sticky

### Cylinder Pins & Bushings



2

Noticeable play in bucket pins/missing wiper seals

### Final Drive Housings



2

### Hydraulic Pumps



5

Leaks on pumps, hoses

### Hydraulic Valves



3

Leaks all over

### Hydraulic Oil Lines & Tubes



2

Right side bucket cylinder hose 361-9048/pump/control valve hoses

### Hydraulic Operating Condition



### Hydraulic Swivel



1

Could not operate system for long due to coolant warning and transfer

Buried in oil/grease and dirt, needs wash

### Pump Drive



### Stick Cylinder



2

Starting to leaking 215-9995

### Swing Drive



Binding/felt restricted in movement. Does not move much

### Swing Gear & Bearing



Good from the outside, swing does not work backlash unknown

### Swing Motors



Left swing leaking, reseal, does not work

### Tank Hydraulic



### Travel & Steering Operating Condition



Right lever is sticky

### Travel Drive Motors



1

Right side leaking, remove cover, wash and locate leaks

### Hydraulic System Leaks

**YES**

Notes - HYDRAULICS  
Cracking relief valve on boom  
circuit/engine hunts (RPM goes  
up/down)

BOOM

Boom Condition ●●	📷3	Boom Pin & Bushing ●● Acceptable due to machine hours	Boom Swing Frame ●●
Boom Swing Frame Pins & Bushings ●●			
Boom Length (Actual Length) 25.6 FT			

STICK

Bucket Tilt Linkages ●●	📷1	Bucket Tilt Linkages Pins & Bushings ●● Noticeable play	📷2	Stick Conditions ●● Dents on the end/scrapes	📷1
Stick Pin & Bushing ●● Acceptable due to machine hours					
Stick Length 11.8 FT					

BUCKET

Bucket Bottom ●● Worn wear strips	📷1	Bucket Mounts ●● Pin flange missing/broke off	📷1	Bucket Pins & Bushings ●●	
Bucket Sides ●●	📷3	Cutting Edges ●● Missing pin on ls, worn edges	📷2	Teeth / Adapters ●●	📷1

Coupler Quick Disconnect NO	Extra Buckets NO
Brand ESCO	Width 72 Inch

UNDERCARRIAGE

	Measurement (L)	% Worn (L)	Total Potential Hours (L)	Measurement (R)	% Worn (R)	Total Potential Hours (R)
Bushings (EXT)	0.45	91		0.46	88	
Carrier Rollers 1	1.29			1.30		
Carrier Rollers 2	1.35			1.38		
Carrier Rollers 3	1.29			1.21		
Carrier Rollers Front	21			19		
Idlers Front	0.94	23		0.98	36	
Links	1.22	33		1.20	38	
Pins & Bushings (External)	87			88		
Shoe Width	25.59			25.59		
Sprocket Segments	11.02			10.63		
Track Shoes	30			30		
Track Roller 1	2.16	48		2.15	51	
Track Roller 2	2.13	57		2.15	51	
Track Roller 3	2.20	36		2.20	36	
Track Roller 4	2.19	39		2.21	32	
Track Roller 6	2.24	23		2.23	26	

Track Roller 7	2.20	35	2.17	46
Track Roller 8	2.20	35	2.17	46
Track Shoes	1.97		1.94	

Drive Sprockets <div><div></div><div></div></div>	<div><div></div>2</div>	Track Adjuster <div><div></div><div></div><div></div></div>	Track Frame - Left <div><div></div><div></div><div></div></div> <div>Track frame has been narrowed for transportation, some of the mounting bolts are loose,not all in place</div>	<div><div></div>4</div>
Track Frame - Right <div><div></div><div></div><div></div></div> <div>Track frame has been narrowed for transportation, some of the mounting bolts are loose,not all in place</div>		Track Guides <div><div></div><div></div></div> <div>Worn</div>		<div><div></div>4</div>
Pins & Bushings Turned? NO				
Track Shoes Width 650x310 mm				

COMMENTS, MISC. REPAIRS, GENERAL REMARKS

comment 1 Inspected on 12/12/24 @ 7302 hours, on hour meter	Date of Machine Inspection Inspected on 12/12/24 @ 14111 hours, on PSR
--	---

MARKETING PHOTOS (32)























## LINE ITEM PHOTOS (105)

### Bumper



Bent walkway bumpers



---

### Cab



Three 10 mm holes drilled in the back, does not affect the structure, dirty



---

## Counterweight



Faded paint, scratches



---

## Engine Doors



---

## Engine Enclosure Panels



One missing panel under the engine, few bented ones





---

## Fuel Tank



Missing strainer 303-9933



---

## Hood

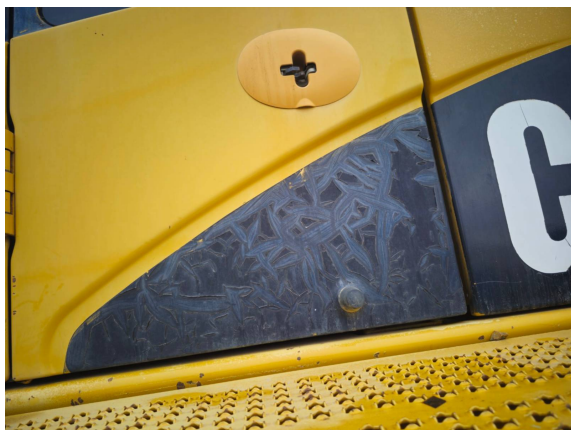


---

## Paint & Decals



Peeling/scratches



---

## Plastic Covers



Faded, loose, dirty



---

## Steps / Ladder



Minor dents/different style  
steps





---

## Storage Compartments



---

## Underbody Guarding Plates

Track motor hose guards are removed/missing. few in the bucket



---

## Alternate Exit

No hammer





---

## Reflectors / Reflective Labels



Faded



---

## Seat-Belt



Expired 235-9020

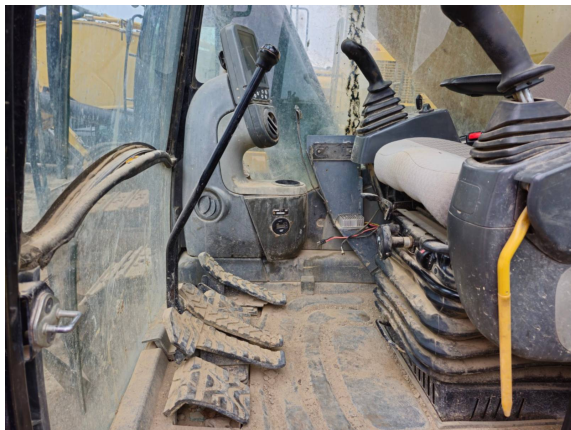


---

## Cab Interior Trim



Very dirty, needs cleaning

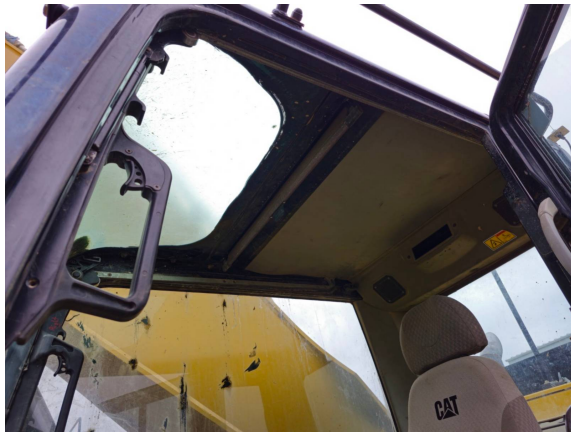


---

### Glass & Windows



Skylight and windows are foggy/stained



---

### Hour Meter



It been replaced but could not read previous hrs tag. 14111 hrs on PSR



---

### Interior Lights



Does not work



---

## Joystick Console



Side covers, boot



---

## Monitor / Warning Alarm



1/4 inch black ink dot, pad cover missing



---

## Seat / Suspension / Arm Rests





---

## Switches



Fair



## Air Cleaners



---

## Belts & Pulleys



---

## Engine Air Inlet

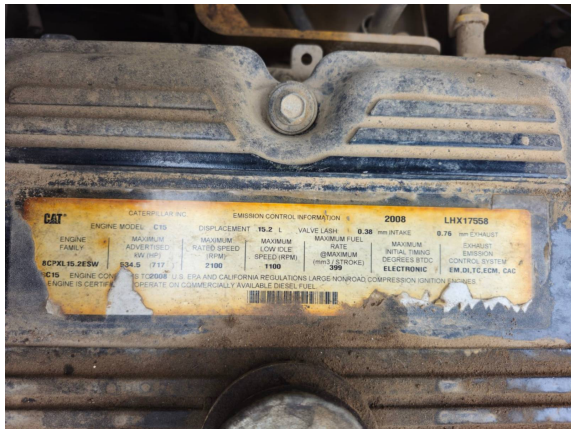
Broken ether line, possible dirt entry



---

## Emission Label

YES



---

## Engine Oil Leaks

YES







---

Fluid Levels OK?

**NO**

Level is over, possible transfer,  
broken dipstick 275-6598



---

Engine Cooling Tubes & Hoses



---

Radiator



Coolant leak, bottom of radiator





## Cooling System Leaks

**YES**

Heater hose/coolant leak,  
bottom of radiator



## Oil Pressure (H/L/N)

58/65 psi

A screenshot of a diagnostic tool interface displaying a table of engine parameters. The table has columns for Description, Value, Unit, Min, Max, and ECM. The 'Engine Oil Pressure' row shows a value of 58 psi.

Description	Value	Unit	Min	Max	ECM
Status Group #2					
Engine Speed	900	rpm	0	1107	C15 360C (LHX17558)
Engine Oil Pressure	58	psi	0	61	C15 360C (LHX17558)
Atmospheric Pressure	13.4	psi	13.4	13.4	C15 360C (LHX17558)
Engine Coolant Temperature	138	Deg F	138	144	C15 360C (LHX17558)
Boost Pressure	0	psi	0	1	C15 360C (LHX17558)
Inlet Air Temperature	87	Deg F	87	126	C15 360C (LHX17558)
Fuel Temperature	75	Deg F	56	91	C15 360C (LHX17558)

A screenshot of a diagnostic tool interface displaying a table of engine parameters. The table has columns for Description, Value, Unit, Min, Max, and ECM. The 'Engine Oil Pressure' row shows a value of 65 psi.

Description	Value	Unit	Min	Max	ECM
Status Group #2					
Engine Speed	1749	rpm	0	1962	C15 360C (LHX17558)
Engine Oil Pressure	65	psi	0	65	C15 360C (LHX17558)
Atmospheric Pressure	13.5	psi	13.4	13.5	C15 360C (LHX17558)
Engine Coolant Temperature	138	Deg F	138	144	C15 360C (LHX17558)
Boost Pressure	2	psi	0	2	C15 360C (LHX17558)
Inlet Air Temperature	79	Deg F	79	126	C15 360C (LHX17558)
Fuel Temperature	85	Deg F	56	91	C15 360C (LHX17558)

## Beacon





---

### Fuse / Circuit Breaker Panel



Missing cover



---

### Lighting



Right side boom light does not work



---

### Starter



covered with oil



---

### Wiring



greasy/oily



---

### Boom Lift Cylinders



Both leaking, left side is worse

225-4646 x 2



---

### Controls-Hydraulic



Loose covers, right travel lever  
is very stiff/sticky





---

### Controls-Travel & Steering



Loose covers, right travel lever  
is very stiff/sticky



---

### Cylinder Pins & Bushings



Noticeable play in bucket  
pins/missing wiper seals



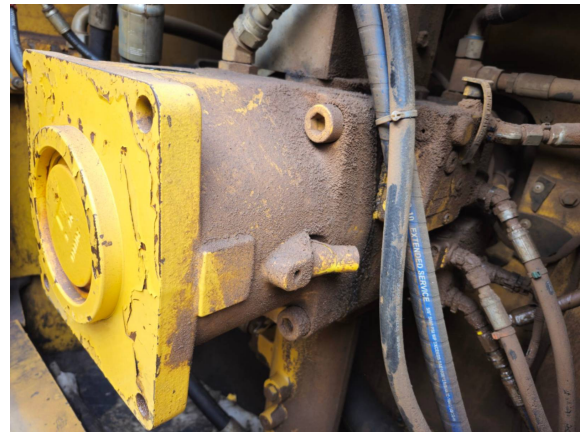
---

### Final Drive Housings



## Hydraulic Pumps

Leaks on pumps, hoses



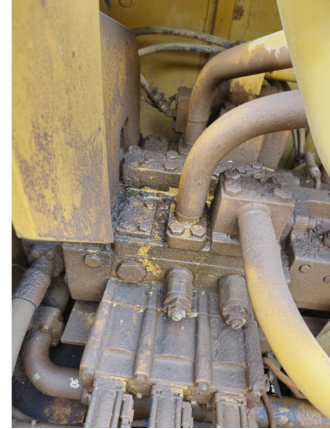
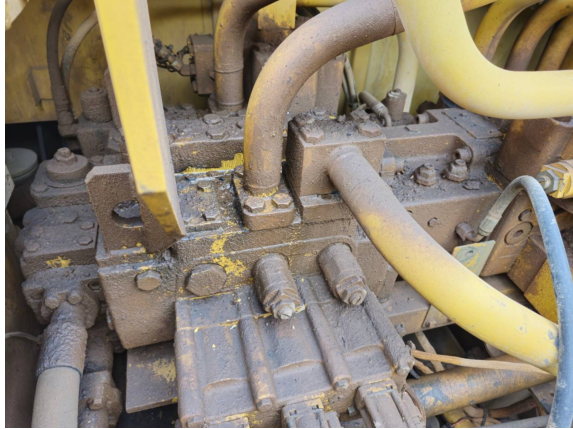


---

## Hydraulic Valves



Leaks all over



---

## Hydraulic Oil Lines & Tubes



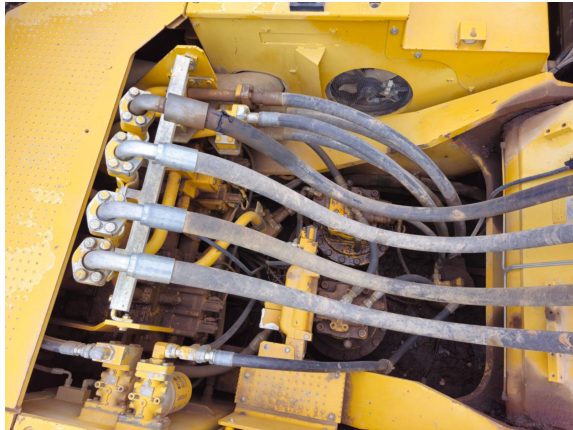
Right side bucket cylinder hose  
361-9048/pump/control valve  
hoses



---

### Hydraulic Swivel

●●  
Buried in oil/grease and dirt,  
needs wash



---

### Stick Cylinder

●●  
Starting to leaking 215-9995



---

### Travel Drive Motors

●●  
Right side leaking, remove  
cover, wash and locate leaks

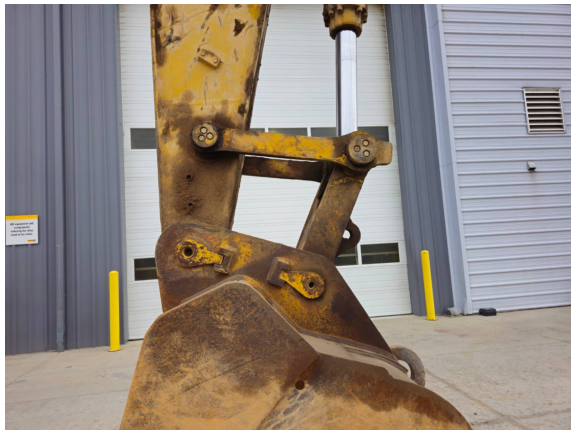




## Boom Condition



## Bucket Tilt Linkages



---

## Bucket Tilt Linkages Pins & Bushings



Noticeable play



---

## Stick Conditions



Dents on the end/scrapes



---

## Bucket Bottom



Worn wear strips





---

## Bucket Mounts



Pin flange missing/broke off



---

## Bucket Sides



---

## Cutting Edges



Missing pin on Is, worn edges



---

## Teeth / Adapters



---

## Drive Sprockets





---

### Track Frame - Left



Track frame has been narrowed for transportation, some of the mounting bolts are loose, not all in place



---

### Track Guides



Worn





---

Notes - ELECTRICAL, STARTING  
AND CHARGING SYSTEM

Battery covers not secured

