



2016 CAT
335FLCR
TRACK EXCAVATORS

INSPECTION DETAILS

Inspection Type	Marketing
Inspection Form	Standard
Inspection #	10174379
Inspection Status	Completed
Created	01/13/25 12:24:05
Updated	01/16/25 15:52:18
Created By	Garcia, Jr
Inspector	Garcia, Jr
Reviewers	Garcia, Jr
Salesperson	Schultis, Derrick R.
Stock #	E201797
Serial #	KNE00534
SMU / Hours	7,015
Location	Eloy, AZ 85131, United States



FEATURES

General

- Air Conditioner
- Coupler - Quick
- Hand and Foot Control
- Radio - AM FM Radio
- Boom - 1 Piece
- Coupler Type - Hydraulic
- Lighting
- Stick
- Car Body - Standard
- Engine Enclosures
- Mirrors
- Straight Travel Pedal

Regulatory

- Ultra Low Sulfur Diesel Fuel

CONDITION

Good

Fair

Poor

Approved Repair

GENERAL CONDITION

Body <div><div></div><div></div><div></div></div>	Frame <div><div></div><div></div><div></div></div>	General <div><div></div><div></div><div></div></div>
ET Product Status Report Download YES	Logged / Active Codes NO	Visible Oil Leaks NO

GENERAL APPEARANCE

Bumper <div><div></div><div></div><div></div></div>	Car Body <div><div></div><div></div><div></div></div>	Counterweight <div><div></div><div></div><div></div></div> <div>Has scratches</div>
Crankcase Guard / Battery Box <div><div></div><div></div><div></div></div>	Decals <div><div></div><div></div><div></div></div> <div>Have scratches</div>	Draw Bar <div><div></div><div></div><div></div></div>
Eng. Enclose Hood / Stack <div><div></div><div></div><div></div></div>	Engine Doors <div><div></div><div></div><div></div></div>	Fenders <div><div></div><div></div><div></div></div> <div>Right side fenders have dents on bottom of fender</div> <div>📷2</div>
Fiberglass <div><div></div><div></div><div></div></div>	Fuel Tank <div><div></div><div></div><div></div></div>	Grab Irons <div><div></div><div></div><div></div></div>
Hood <div><div></div><div></div><div></div></div>	Main Frame Welds <div><div></div><div></div><div></div></div>	Paint <div><div></div><div></div><div></div></div> <div>Has scratches</div>
Plastic <div><div></div><div></div><div></div></div>	Pre-Cleaner Bowl <div><div></div><div></div><div></div></div>	Radiator Grill & Shroud <div><div></div><div></div><div></div></div>
Sheet Metal <div><div></div><div></div><div></div></div>	Steps / Ladder <div><div></div><div></div></div> <div>Left front step is bent</div>	📷1

Extra Fuel Tanks
NO

SAFETY ITEMS

Camera(s) ●●●	1	Horn ●●●	Seat Belt / Date ●●● DEC 2024	1
Travel Alarm ●●●				
ROPS YES		ROPS Certification Plate YES	1	Safety Decals In Place YES
Safety Decals Legible YES				

OPERATOR STATION

Air Conditioner ●●●	1	Armrests ●●●	Dash Console ●●●	
Door Latches / Hinges / Seals ●●●		Floor Boards / Mats ●● Floor mat is ripped.	3	Gauges ●●●
Headliner ●●●		Heater / Defroster ●●●	1	Hour Meter - GAUGES, OPERATION STATION, CONSOLE ●●● Lower hour meter does not match display hour meter (display has same hours as status report)
Hydraulic Controls ●●●		Interior Lights ●●●	1	Interior Plastic / Fabric ●●●
Mirrors ●●●		Monitoring Display ●●●		Radio ●●●

Seat Cushions / Suspension / Type ●●● seat cover is not factory cat	📷1	Switches ●● Horn switch is not legible and missing switch plugs on right side console	📷2	Travel Controls (Type) ●●●
Windows ●●●		Windshield Wipers ●●●		
Current O&MM YES	📷1	Current Safety Manual YES	📷1	

ENGINE

Belts / Pulleys - ENGINE ●●●		Engine Oil Level / Condition ●●●		Exhaust / Muffler / Stack ●●●
Fuel Injection System ●●●		Intake / Air Filters ●●●	📷1	Operating Condition - ENGINE ●●●
Turbocharger / Blower ●●●				
Apparent Other Engine Damage NO		Blow By NO		Emissions Decal Legible NO
Fuel Leaks NO		Knocking NO		Oil Leaks NO
Water in Oil NO				

EMISSIONS

Aftertreatment System Codes NO		Leaks / Type NO		
--	--	---------------------------	--	--

COOLING SYSTEM

Anti-Freeze Level / Color / Condition ●●● Red	📷1	Coolers ●●●		Fan ●●●
---	----	----------------	--	------------

Fan Drive / Type



Fan Shrouds / Guards



Hoses / Tubes



Radiator



Water Pump



Compression in Radiator

NO

Coolant Leaks

NO

Oil in Anti-Freeze

NO

Standard Radiator

YES

ELECTRICAL, STARTING AND CHARGING SYSTEM

Alternator



Batteries / Cables / Master
Disconnect



Lighting



Starter



Wiring



HYDRAULICS

Boom Cylinder



Bucket Cylinder



Control Linkage



Hose Lines



Hydraulic Swivel



Operating Condition -
HYDRAULICS



Pump Drive



Pumps & Valves



Stick Cylinder



Swing Gear



Swing Motors



Tank






Travel Motors







ATTACHMENTS / WORK TOOLS

Auger NO	Claw NO	Crusher NO
Grapple NO	Hammer NO	Pulverizer NO
Rake NO	Ripper NO	Shear NO
Thumb NO	Tilting Ditch Bucket NO	Vibratory Plate NO





BOOM

Boom Condition 	Boom Pins 	Pins & Bushings - BOOM 
Boom Length (Actual Length) 241"		

STICK

Pins & Bushings - STICK 	Stick Conditions  stick has dents (weld repair)	 1 Stick Pins 
Stick Length 126"		

BUCKET

Bucket Bottom  Has dents	Bucket Mounts 	Bucket Sides 
Teeth / Adapters 		
Quick Coupler YES		


Brand
no tag on bucket

Notes - BUCKET
47inches

UNDERCARRIAGE

	Measurement (L)	% Worn (L)	Total Potential Hours (L)	Measurement (R)	% Worn (R)	Total Potential Hours (R)
Carrier Rollers Front	6.26	4		6.26	4	
Carrier Rollers Rear	6.26	4		6.26	4	
Idlers Front	0.84	21		0.84	21	
Links	4.84	14		4.78	35	
Pins & Bushings (External)	2.72	21		2.74	7	
Track Roller 1	0.72	5		0.74	5	
Track Roller 2	0.74	5		0.74	5	
Track Roller 3	guard			guard		
Track Roller 4	0.76	10		.74	5	
Track Roller 5	guard			guard		
Track Roller 6	0.76	10		0.78	15	
Track Roller 7	guard			guard		
Track Roller 8	0.74	5		0.76	10	
Track Roller 9	0.76	10		0.74	10	
Track Shoe Grouser Height	1.06	23		1.06	23	

Track Frame - Left


Track Frame - Right


Link Part Number 6y-2589	Links multiple track links are seized on left and right side	📷1	Track Shoes Width / Type 48 track pads are bent	📷1
-----------------------------	--	----	--	----

FINAL DRIVES

Housings, Left ●●●	Housings, Right ●●●	Planetaries / Differential, Left ●● sprocket is worn
Planetaries / Differential, Right ●● sprocket is worn		
Magnetic Plugs Removed & Checked? NO		

MARKETING PHOTOS (30)











LINE ITEM PHOTOS (24)

Fenders



Right side fenders have dents
on bottom of fender



Steps / Ladder



Left front step is bent



Camera(s)



Seat Belt / Date

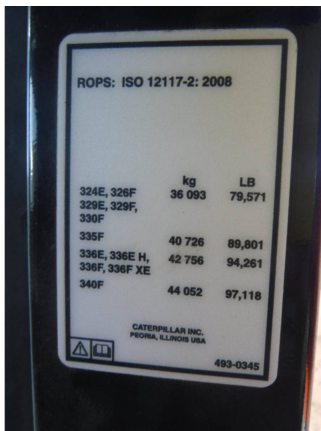


DEC 2024



ROPS Certification Plate

YES



Air Conditioner



Floor Boards / Mats



Floor mat is ripped.



Heater / Defroster



Hour Meter - GAUGES,
OPERATION STATION,
CONSOLE



Lower hour meter does not
match display hour meter
(display has same hours as
status report)



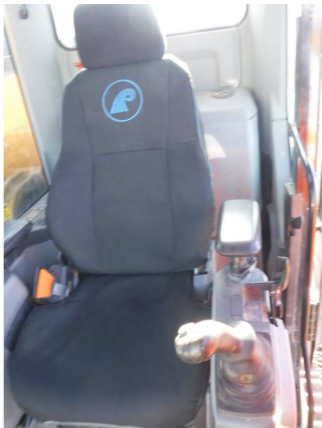
Interior Lights



Seat Cushions / Suspension /
Type



seat cover is not factory cat



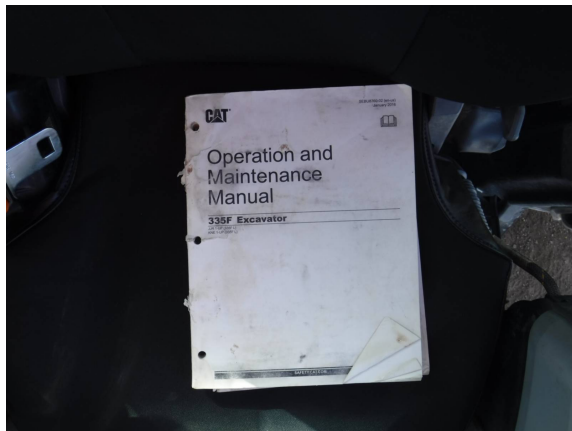
Switches

Horn switch is not legible and missing switch plugs on right side console



Current O&MM

YES



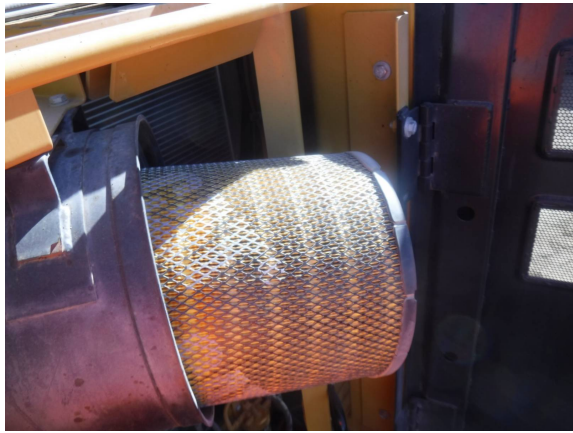
Current Safety Manual

YES



Intake / Air Filters

●●●



Anti-Freeze Level / Color / Condition

●●●●

Red



Stick Conditions

●●

stick has dents (weld repair)



Links

multiple track links are seized
on left and right side



Track Shoes Width / Type

48 track pads are bent

