



2020 CAT
14013
MOTOR GRADERS

INSPECTION DETAILS

Inspection Type	Marketing
Inspection Form	Standard
Inspection #	10182130
Inspection Status	Completed
Created	02/13/25 12:04:59
Updated	02/14/25 11:40:26
Created By	Willis, Joseph
Inspector	Willis, Joseph
Reviewers	Willis, Joseph
Salesperson	Schultis, Derrick R.
Stock #	E201800
Serial #	N9400356
SMU / Hours	4,019
Location	Eloy, AZ 85131, United States



FEATURES

General

- Air Conditioner
- Circle Clutch
- Drive - Tandem
- Mirrors
- Radio - AM FM Radio
- Steering Type - Wheel
- Air Suspension Seat
- Defroster Fan
- Guard, Transmission
- Moldboard Size - 14'
- Ripper - Multi-Shank
- Supplemental Steering
- Beacon
- Differential Lock
- Lighting
- Product Link
- ROPS - Enclosed
- Throttle Lock

Regulatory

- Ultra Low Sulfur Diesel Fuel

CONDITION

Good

Fair

Poor

Approved Repair

GENERAL CONDITION

Body <div><div></div><div></div><div></div></div>	Frame - GENERAL CONDITION <div><div></div><div></div><div></div></div>	General <div><div></div><div></div><div></div></div>
ET Product Status Report Download YES	Logged / Active Codes NO	Machine Starts and is Operable YES
Tires are Aired Up and Drivable YES	Visible Oil Leaks NO	

GENERAL APPEARANCE

Battery Box <div><div></div><div></div><div></div></div>	Cab or Canopy <div><div></div><div></div><div></div></div>	Crankcase Guard / Transmission Guard <div><div></div><div></div><div></div></div>
Decals <div><div></div><div></div><div></div></div>	Draw Bar <div><div></div><div></div><div></div></div>	<div><div></div>1</div> draw bar <div><div></div><div></div></div> <div>TABLE HAS MOVEMENT. WEAR STRIPS ARE WORN</div> <div><div></div>2</div>
Engine Enclosures <div><div></div><div></div><div></div></div>	Fiberglass <div><div></div><div></div><div></div></div>	Front Frame Welds <div><div></div><div></div><div></div></div>
Fuel Tank <div><div></div><div></div><div></div></div>	Grab Irons <div><div></div><div></div><div></div></div>	Hood <div><div></div><div></div><div></div></div>
Paint <div><div></div><div></div><div></div></div>	Pre-Cleaner Bowl <div><div></div><div></div><div></div></div>	Radiator Grill <div><div></div><div></div><div></div></div>
Rear Frame Welds <div><div></div><div></div><div></div></div>	Sheet Metal <div><div></div><div></div><div></div></div>	Steps / Ladder <div><div></div><div></div><div></div></div>
Cleaning Required NO		

SAFETY ITEMS

Back Up Alarm ●●●	Camera(s) ●●●	📷1	Horn ●●●
ROPS ●●●	Seat Belt / Date ●●● JAN 2025	📷1	
Parking Brake Functioning YES	ROPS Certification Plate YES		Safety Decals In Place YES
Safety Decals Legible YES	Safety Locks / Pins YES	📷1	Service Brakes Functioning YES

OPERATOR STATION

Air Conditioner ●●●	📷1	Armrests ●●●	Cab Filter / Heat Vent Louvres ●●●
Dash Console ●●●		Door Latches / Hinges / Seals ●●●	Floor Boards / Mats ●●●
Gauges ●●●		Headliner ●●●	Heater / Defroster ●●●
Hour Meter - GAUGES, OPERATION STATION, CONSOLE ●●●		Hydraulic Controls ●●●	Interior Lights ●●●
Interior Plastic / Fabric ●●●		Mirrors ●●●	Monitoring Display ●●●
Radio ●●●		Seat Cushions / Suspension / Type ●●●	📷1
Transmission Controls ●●●		Windows ●●●	Switches ●●●
Current O&MM YES	📷1	Current Safety Manual YES	📷1

ENGINE

Belts / Pulleys - ENGINE <div><div></div><div></div><div></div></div>	Engine Oil Level / Condition <div><div></div><div></div><div></div></div>	Engine Supports / Mounts <div><div></div><div></div><div></div></div>
Exhaust / Muffler / Stack <div><div></div><div></div><div></div></div>	Fuel Injection System <div><div></div><div></div><div></div></div>	Intake / Air Filters <div><div></div><div></div><div></div></div>
Operating Condition - ENGINE <div><div></div><div></div><div></div></div>	Turbocharger / Blower <div><div></div><div></div><div></div></div>	
Apparent Other Engine Damage NO	Blow By NO	Fuel Leaks NO
Knocking NO	Oil Leaks NO	Water in Oil NO

EMISSIONS

Aftertreatment Heat Shields / Guards <div><div></div><div></div><div></div></div>	DEF Lines / Wiring <div><div></div><div></div><div></div></div>	Diesel Particulate Filter (DPF) Condition / Service Hours <div><div></div><div></div><div></div></div>
Aftertreatment System Codes NO	Leaks / Type NO	

COOLING SYSTEM

Anti-Freeze Level / Color / Condition <div><div></div><div></div><div></div></div> Red	1 Coolers <div><div></div><div></div><div></div></div>	Fan <div><div></div><div></div><div></div></div>
Fan Drive / Type <div><div></div><div></div><div></div></div>	Fan Shrouds / Guards <div><div></div><div></div><div></div></div>	Hoses / Tubes <div><div></div><div></div><div></div></div>
Radiator <div><div></div><div></div><div></div></div>	Water Pump <div><div></div><div></div><div></div></div>	
Compression in Radiator NO	Coolant Leaks NO	Oil in Anti-Freeze NO

Standard Radiator
YES

ELECTRICAL, STARTING AND CHARGING SYSTEM

Alternator ●●●	Batteries / Cables ●●●	Product Link / Condition ●●●
Starter ●●●	Wiring ●●●	Work Lights ●●●
Active Codes NO	Jump Start Terminal YES	Signal Lights NO Right side turn signal does not work needs checked and advised



TRANSMISSION

Case - TRANSMISSION ●●●	Controls - TRANSMISSION ●●●	Cooler ●●●
Lines / Fittings - TRANSMISSION ●●●	Operating Condition - TRANSMISSION ●●●	Pump - TRANSMISSION ●●●
Seals ●●●	Temp / Pressure Gauges ●●●	Transmission - Forward Shifts ●●●
Transmission - Reverse Shifts ●●●	Valves ●●●	
Leaks - TRANSMISSION NO	Transmission - Noisy NO	

STEERING


Articulate P & B ●●●	King Pins ●●●	Lines / Fittings ●●●
Steering Column / Tilt ●●●	Steering Cylinder ●●●	Steering Frame ●●●

Steering Linkage
●●●

Steering Operating Condition
●●●

Steering Pump
●●●

Steering Valve
●●●

Supplemental Steering 1
supplemental steering is not working

Tie Rods / Rod Ends
●●●

Wheel / Joystick
●●●
WHEEL

Wheel Lean Cylinder - STEERING
●●●

BRAKE

Accumulators
●●●

Brake Linkage
●●●

Control Valve
●●●

Lines
●●●

Parking Brake Operation
●●●

Pedal
●●●

Service Brake Operation
●●●


DRIVECHAIN / TANDEMS

Differential
●●●

Differential Lock / Operation
●●●

Drivetrain / Tandem Leaks
●●●

Planetary
●●●


Tandem Housing / Drive Chains 1
walkway on left side tandem has dent

Wheel Lugs & Rims
●●●

HYDRAULICS

Circle Drive Box
●●●

Circle Side Shift Cylinder
●●●

Cylinder Mounts / Pins 1
lift cylinder yokes have movement

Hydraulic Lines / Fittings
●●●

Hydraulic Pump
●●●

Hydraulic Valves
●●●

Lift Cylinders
●●●

Linkage
●●●

Operating Condition -
HYDRAULICS
●●●

Pump Drive Shaft



Saddle Pin / Actuator



Side Shift Cylinder



Tank / Sight Glass / Cap



Tip Cylinder



Leaks - HYDRAULICS

NO

BLADE

Circle A Frame



Circle Frame



circle frame has cracks on left and right side



2

Circle Shoes / Inserts



circle shoe inserts are worn



2

Cutting Edge



1/2 worn

Cylinder Balls / Caps



Face / Moldboard



Frog / Base Edge



Moldboard Tip Brackets / Inserts



moldboard inserts are worn



2

Ring Gear



Saddle



Tip Bracket Pivots / Bearings



pivot tip bearings have movement



1

RIPPER

Beam



Brackets / Studs



Cylinders



bushings on cylinder have movement

Frame



Lines / Fittings - RIPPER



Pins / Bushings



Shanks / Ripper (GET)



ripper G.E.T is worn




1

Shanks / Scarifier (GET)



TIRES

	Make / Serial#	Tread Depth in 1/32"	% Life Remaining	Recapped	Tread Cuts/Chunks	Side Cuts Section
Left Center	Maxum ms301	34	94	NO	YES	YES
Left Front	Maxum ms301	32	91	NO	YES	YES
Left Rear	Maxum ms301	34	94	NO	YES	YES
Right Center	Maxum ms301	34	94	NO	YES	YES
Right Front	Maxum ms301	32	91	NO	YES	YES
Right Rear	Maxum ms301	34	94	NO	YES	YES

Bias YES	Radial NO
Average Life Remaining - TIRES 90%	Notes - TIRES both front tires have deep Cutts on inner of tires.
	 2 Tire Size - TIRES 17.5-25

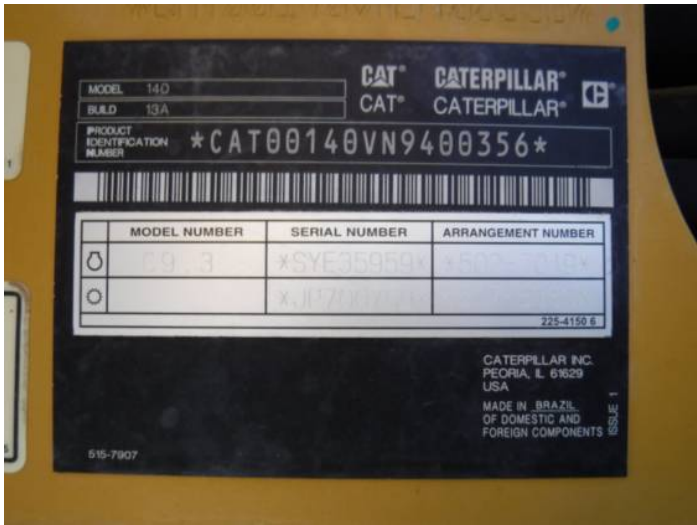
A yellow Caterpillar motor grader is the central focus, equipped with a large, silver cylindrical roller attachment. The machine is parked on a dark, gravelly surface. In the background, a clear blue sky is visible, along with a billboard on the left and other construction equipment in the distance. The Caterpillar logo is clearly visible on the side of the machine.











LINE ITEM PHOTOS (45)

Draw Bar



draw bar



TABLE HAS MOVEMENT. WEAR
STRIPS ARE WORN



Camera(s)



Seat Belt / Date



JAN 2025



Safety Locks / Pins

YES



Air Conditioner



Heater / Defroster

●●●



Interior Lights

●●●



Seat Cushions / Suspension /

Type

●●●



Current O&MM
YES



Current Safety Manual
YES



Anti-Freeze Level / Color /
Condition
●●●
Red



Signal Lights

NO

Right side turn signal does not work needs checked and advised



Supplemental Steering

●

supplemental steering is not working



Tandem Housing / Drive Chains

●●●

walkway on left side tandem has dent



Cylinder Mounts / Pins

●●
lift cylinder yokes have movement



Circle Frame

●●
circle frame has cracks on left and right side



Circle Shoes / Inserts

●●
circle shoe inserts are worn



Moldboard Tip Brackets / Inserts



moldboard inserts are worn



Tip Bracket Pivots / Bearings



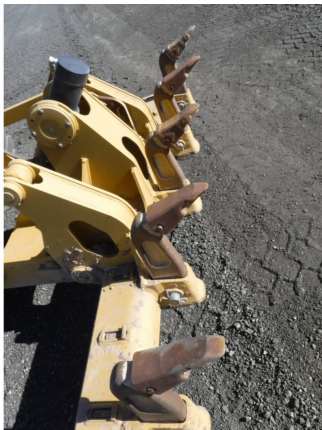
pivot tip bearings have movement



Shanks / Ripper (GET)



ripper G.E.T is worn



	Make / Serial#	Tread Depth in 1/32"	% Life Remaining	Recapped	Tread Cuts/Chunks	Side Cuts Section
Left Center	Maxum ms301	34	94	NO	YES	YES



	Make / Serial#	Tread Depth in 1/32"	% Life Remaining	Recapped	Tread Cuts/Chunks	Side Cuts Section
Left Front	Maxum ms301	32	91	NO	YES	YES





	Make / Serial#	Tread Depth in 1/32"	% Life Remaining	Recapped	Tread Cuts/Chunks	Side Cuts Section
Left Rear	Maxum ms301	34	94	NO	YES	YES



	Make / Serial#	Tread Depth in 1/32"	% Life Remaining	Recapped	Tread Cuts/Chunks	Side Cuts Section
Right Center	Maxum ms301	34	94	NO	YES	YES



	Make / Serial#	Tread Depth in 1/32"	% Life Remaining	Recapped	Tread Cuts/Chunks	Side Cuts Section
Right Front	Maxum ms301	32	91	NO	YES	YES





	Make / Serial#	Tread Depth in 1/32"	% Life Remaining	Recapped	Tread Cuts/Chunks	Side Cuts Section
Right Rear	Maxum ms301	34	94	NO	YES	YES



Notes - TIRES

both front tires have deep Cuts
on inner of tires.

