



2013 CAT
AP1000E
ASPHALT PAVERS

INSPECTION DETAILS

Inspection Type	Consignment
Inspection Form	Standard
Inspection #	10176228
Inspection Status	Inspected
Created	01/20/25 17:25:53
Updated	01/22/25 10:29:01
Created By	Fuller, Scott U.
Inspector	Fuller, Scott U.
Reviewers	Fuller, Scott U.
Salesperson	Judd, Dillon
Last Preventative Maintenance	Jun 29, 2024
Serial #	T1F00209
SMU / Hours	9,749
Location	Las Vegas, NV, United States



FEATURES

General

- *HOSE, REEL WITH WAND
- AUX FUEL TANK
- CONTROL, BASE CAT G&S SYSTEM
- GENERATOR SYSTEM
- POWER CROWN CONTROL
- PRODUCT LINK
- SCREED, AS3301C EXTEND-A-MAT
- SCREED, VENTILATION SYSTEM
- APRON, HYDRAULIC FOLD
- AUXILIARY POWER PANEL
- EPA LABEL
- HOSE, REEL WITH WAND
- POWER HEIGHT CONTROL
- PUSH ROLLER
- SCREED, ELECTRICAL HEATING SYSTEM
- ULTRA LOW SULFUR DIESEL FUEL
- AUGERS, VERTICALLY ADJUSTABLE
- CLEAN EMISSIONS MODULE TIER 4 - INTERIM
- FLASHING, HYDRAULIC FOLD
- LIGHTING
- POWER SLOPE CONTROL
- PUSH ROLLER, OSCILLATING
- SCREED, EXTENDABLE

CONDITION



Good



Fair



Poor

Approved Repair

GENERAL APPEARANCE

Eng. Enclose Hood / Stack



Engine hood has some sheet metal damage.



2

Fuel Tank



Missing fuel fill screen.



1

Grab Irons



Leveling Arm



Main Frame Welds



Paint



Paint has various scrapes and gouges throughout.

Radiator Grill & Shroud



Grill has multiple dents.



2

Screed Frame



Sheet metal



Both side access doors have some damage on bottom edges, and torn noise reduction panels.



4

Steps / Ladder



Cleaning required?

YES

Machine dirty with areas of asphalt build up. Will need extra cleaning

S.O.S. Taken

YES

Engine and Hydraulic

Service required?

NO

Most recent pm service performed 6/29/2024 at 9665 hours.

SAFETY ITEMS

Back Up Alarm



Brake Hold



Horn



Parking Brake



safety decals



Several safety labels are peeling. replace missing and damaged decals



2

Seat Belt



Both seat belts installed Aug. 2023




2

GAUGES, OPERATOR STATION, CONSOLE

controls
●●●


Dash Console
●●●

EMS Panel / Warnings
●●
Monitor display is somewhat discolored from heat. 1


Floor Boards
●●

Gauges
●●●

Meter
●●●

Platform
●●
All Traction tape is torn / worn. - replace all floormats/traction panels 4

Seat Cushion / Arm Rest
●●●


Switches
●●
Several rocker switches are faded. 2

Current O&MM
NO

Current Parts Manual
NO

Current Safety Manual
NO

ENGINE

Air Cleaners
●●
Air box cover has 3 of 4 clamps that are bent and dont clamp down. - replace cover 1

Air Inlet / Exhaust / Muffler
●●●

Engine Supports
●●●

Fuel Injection System
●●●

Governor
●●●

Overall Operating Condition
●●●

Turbocharger / Blower
●●●

Blow By
NO

Compression in Radiator
NO

Fluid Levels OK?
YES

Knocking
NO

Oil Leaks
YES
No significant leaks found.

Anti-Freeze Color
Red

Oil Pressure (H/L/N)
Normal

Smoke (B/D/L/W)
clear

COOLING SYSTEM

Coolers
●●●

Fan
●●●

Fan Drive
●●●

Hoses
●●●

Radiator
●●●

Water Pump
●●●

ELECTRICAL, STARTING AND CHARGING SYSTEM

Alternator
●●●

Batteries / Cables
●●●

Lighting
●●●

Starter
●●●

Wiring
●●●

ECM downloaded?
YES
Has multiple logged fault codes -
see PSR



PAVER / SCREED / CONVEYOR

Auger
●●●

Auger Motors
●●●

Chrome Guide Tubes
●●●

Conveyor
●●●

Conveyor Pumps & Motors
●●●

Crown Adjustment
●●●

Ext. Screed Height Adj.
●●●

Ext. Screed Slope Ctrl Adj.
●●●

flashing
●●
Flashing has tears/damage. Repair
bent plate.



Heating system
●●●

Hopper
●●●

Hopper Cylinders
●●●

Hose Lines
●●●

Hydraulic tank
●●●


Pumps & Valves
●●●


Push Rollers
●●●

Screed Frames
●●●

Screed Plate
●●●
Replaced at 6605 hours.

Ski Leveling



Steering Linkage



Thickness Screws


Notes - PAVER / SCREED /
CONVEYOR
AS3301C Screed. Left step is
bent.




UNDERCARRIAGE

Drive Tires

Titan Super Sand flotation- 18.00-25.
4/32 (R) 26% 6/32(L) 40% tread
remaining

Front Bogies

Bogies have multiple chunks and cuts.
2 of 8 tires have been replaced.
Replace others.

4
Wheels


FINAL DRIVES

Planetaries / Diff


COMMENTS, MISC. REPAIRS, GENERAL REMARKS

comment 1
Machine inspected 1/20/2025
with 9749 hours

comment 2
Photos



MARKETING PHOTOS (12)





LINE ITEM PHOTOS (94)

Eng. Enclose Hood / Stack

●●
Engine hood has some sheet metal damage.



Fuel Tank

●●
Missing fuel fill screen.



Radiator Grill & Shroud

●●
Grill has multiple dents.



Sheet metal

●●
Both side access doors have some damage on bottom edges, and torn noise reduction panels.



safety decals

●●
Several safety labels are peeling. replace missing and damaged decals



Seat Belt



Both seat belts installed Aug. 2023



EMS Panel / Warnings



Monitor display is somewhat discolored from heat.

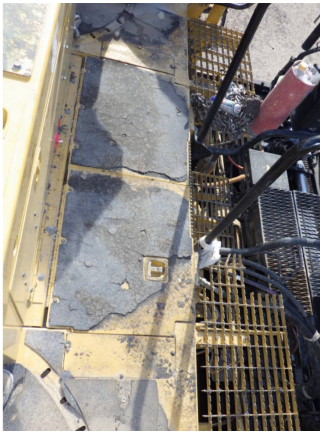


Platform



All Traction tape is torn / worn. - replace all floormats/traction panels





Switches

●●
Several rocker switches are faded.



Air Cleaners

●●
Air box cover has 3 of 4 clamps that are bent and don't clamp down. - replace cover

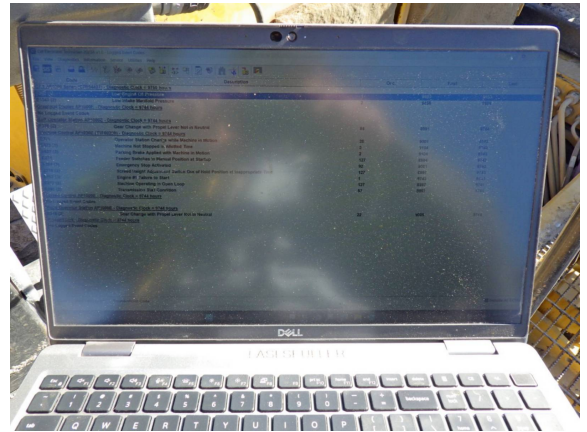
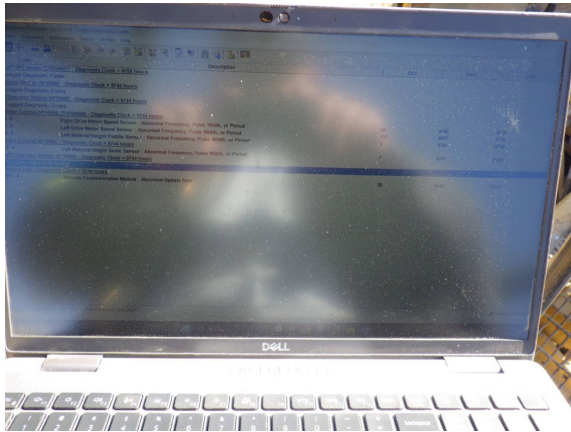


ECM downloaded?

YES

Has multiple logged fault codes

- see PSR



flashing



Flashing has tears/damage.

Repair bent plate.



Front Bogies



Bogies have multiple chunks and cuts. 2 of 8 tires have been replaced. Replace others.





Notes - PAVER / SCREED /
CONVEYOR

AS3301C Screed. Left step is
bent.



comment 2

Photos





