



2007 CAT  
140HNA  
MOTOR GRADERS

INSPECTION DETAILS

Inspection Type	Consignment
Inspection Form	Standard
Inspection #	10188464
Inspection Status	Created
Created	03/12/25 17:27:53
Updated	03/12/25 20:48:33
Created By	Hallett, John L.
Inspector	Hallett, John L.
Salesperson	Harman, Nate
Transmission Serial #	EDB06915
Engine Serial #	3PD19752
Serial #	CCA03647
SMU / Hours	18,234
Location	Goodyear, AZ, United States



MARKETING PHOTOS (30)











## LINE ITEM PHOTOS (119)

Safety Locks / Pins

**NO**

Pin is missing.



Dash Console



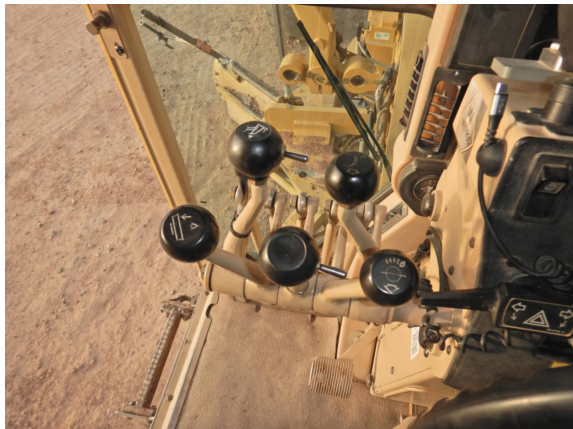
## Gauges



## Hour Meter - GAUGES, OPERATION STATION, CONSOLE



## Hydraulic Controls



## Radio

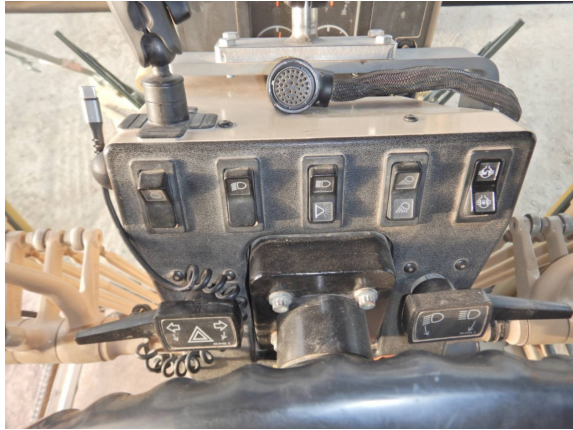


## Seat Cushions / Suspension / Type



## Switches





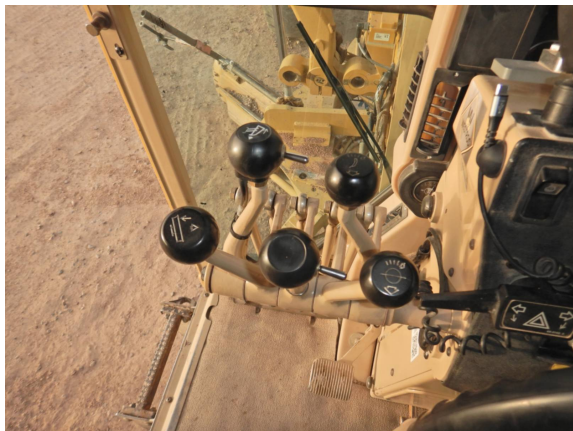
## Transmission Controls



## Notes - GAUGES, OPERATOR STATION, CONSOLE

Good condition for age and  
hours

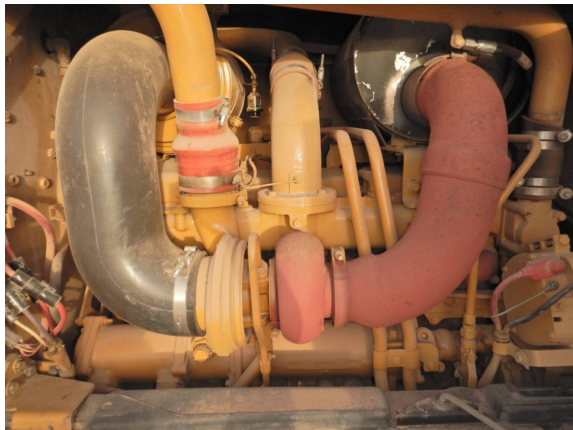






#### Notes - ENGINE

Engine is in good condition and operates normally.





### Batteries / Cables



### Work Lights



Upper front lights are in-op





---

#### Pump - TRANSMISSION



Pump leaks at mount seal.



---

## Leaks - TRANSMISSION

**YES**

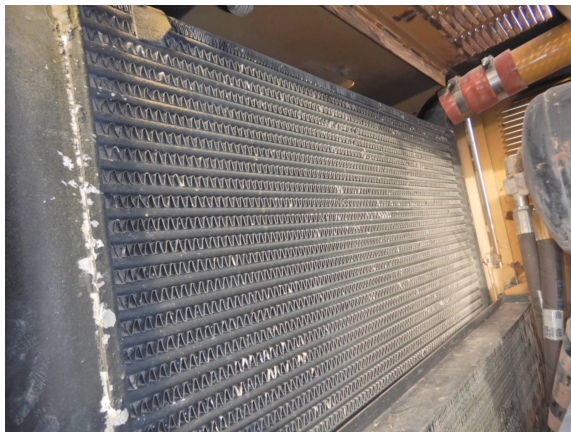
Residual oil on trans under powertrain filter housing - need to clean and reinspect to verify.



---

## Notes - COOLING SYSTEM

Cooling system operates normally with no defects found





### Articulate P & B



Excessive movement in hitch.  
Hitch isolated from tandems.  
Movement stops when machine  
shifts off the ground.





### King Pins

●●  
Visible play in bores



### Steering Cylinder

●●  
Right steer cylinder leaks



---

## Tie Rods / Rod Ends

● Boots torn links loose



---

## Wheel Lean Cylinder - STEERING



---

## Notes - STEERING

Steering in fair condition for age and hours







### Tandem Housing / Drive Chains

●●  
Housing leaks oil. No chain slap  
heard in tandem housings





---

Wheel Lugs & Rims  
●●  
Missing wheel bolt



---

## Hydraulic Valves



Left valve bank leaking oil



---

## Tank / Sight Glass / Cap



---

## Notes - BRAKE

Brakes operate normally





Face / Moldboard



## Notes - BLADE

Circle is in good condition.  
Operates smoothly without any  
excessive play or binding.





Ripper Notes

Ripper operates normally. Not defects found.



	Make / Serial#	Tread Depth in 1/32"	% Life Remaining	Recapped	Tread Cuts/Chunks	Side Cuts Section
Left Center	Yokohama	20.00	57.14			



	Make / Serial#	Tread Depth in 1/32"	% Life Remaining	Recapped	Tread Cuts/Chunks	Side Cuts Section
Left Front	Yokohama	8.00	22.86			



	Make / Serial#	Tread Depth in 1/32"	% Life Remaining	Recapped	Tread Cuts/Chunks	Side Cuts Section
Left Rear	Yokohama	18.00	51.53			



	Make / Serial#	Tread Depth in 1/32"	% Life Remaining	Recapped	Tread Cuts/Chunks	Side Cuts Section
Right Center	Yokohama	18.00	51.43			



	Make / Serial#	Tread Depth in 1/32"	% Life Remaining	Recapped	Tread Cuts/Chunks	Side Cuts Section
Right Front	Yokohama	8.00	22.86			



	Make / Serial#	Tread Depth in 1/32"	% Life Remaining	Recapped	Tread Cuts/Chunks	Side Cuts Section
Right Rear	Yokohama	20.00	57.14			

