



2020 CAT
14013
MOTOR GRADERS

INSPECTION DETAILS

Inspection Type	Marketing
Inspection Form	Standard
Inspection #	10181517
Inspection Status	Completed
Created	02/11/25 16:36:59
Updated	03/06/25 11:21:26
Created By	Calderas, Marco
Inspector	Calderas, Marco
Reviewers	Calderas, Marco
Salesperson	Schultis, Derrick R.
Stock #	E201798
Serial #	N9400359
SMU / Hours	5,242
Location	Eloy, AZ 85131, United States



FEATURES

General

- Air Conditioner
- Circle Clutch
- Drive - Tandem
- Mirrors
- Pushblock
- ROPS - Enclosed
- Throttle Lock
- Air Suspension Seat
- Defroster Fan
- Guard, Transmission
- Moldboard Size - 14'
- Radio - AM FM Radio
- Steering Type - Wheel
- Beacon
- Differential Lock
- Lighting
- Product Link
- Ripper - Multi-Shank
- Supplemental Steering

Regulatory

- Emissions Level - EPA - EPA TIER 4f
- Ultra Low Sulfur Diesel Fuel

Technology

- Accugrade Ready

Attachments

- Scarifier

CONDITION

Good

Fair

Poor

Approved Repair

GENERAL CONDITION

Body <div><div></div><div></div><div></div></div>	Frame - GENERAL CONDITION <div><div></div><div></div><div></div></div>	General <div><div></div><div></div><div></div></div>
ET Product Status Report Download YES	Logged / Active Codes NO	<div><div></div>1</div> Machine Starts and is Operable YES
S.O.S. (All Compartments) NO	Tires are Aired Up and Drivable YES	Visible Oil Leaks NO

GENERAL APPEARANCE


Battery Box <div><div></div><div></div><div></div></div>	Cab or Canopy <div><div></div><div></div><div></div></div>	Crankcase Guard / Transmission Guard <div><div></div><div></div><div></div></div>
Decals <div><div></div><div></div></div> hood decals are peeling.	<div><div></div>1</div> Draw Bar <div><div></div><div></div><div></div></div>	Engine Enclosures <div><div></div><div></div><div></div></div>
Fiberglass <div><div></div><div></div><div></div></div>	Front Frame Welds <div><div></div><div></div><div></div></div>	Fuel Tank <div><div></div><div></div><div></div></div>
Grab Irons <div><div></div><div></div><div></div></div>	Hood <div><div></div><div></div><div></div></div>	Paint <div><div></div><div></div><div></div></div>
Plastic (Exterior) <div><div></div><div></div><div></div></div>	Pre-Cleaner Bowl <div><div></div><div></div><div></div></div>	Radiator Grill <div><div></div><div></div><div></div></div>
Rear Frame Welds <div><div></div><div></div><div></div></div>	Sheet Metal <div><div></div><div></div><div></div></div>	Steps / Ladder <div><div></div><div></div><div></div></div>
Cleaning Required NO		

SAFETY ITEMS

Back Up Alarm ●●●	Camera(s) ●●●	Horn ●●●
ROPS ●●●	Seat Belt / Date ●●●	📷1
Parking Brake Functioning YES	ROPS Certification Plate YES	📷1 Safety Decals In Place YES
Safety Decals Legible NO safety decals are torn	📷2 Safety Locks / Pins YES	📷1 Service Brakes Functioning YES

OPERATOR STATION

Air Conditioner ●●●	📷1 Armrests ●●●	Cab Filter / Heat Vent Louvres ●●●
Dash Console ●●●	Door Latches / Hinges / Seals ●●●	Floor Boards / Mats ●●●
Gauges ●●●	Headliner ●●●	Heater / Defroster ●●● 📷1
Hour Meter - GAUGES, OPERATION STATION, CONSOLE ●●●	Hydraulic Controls ●●●	Interior Lights ●●● 📷1
Interior Plastic / Fabric ●●●	Mirrors ●●●	Monitoring Display ●●●
Pans/Guards ●●●	Radio ●●●	Seat Cushions / Suspension / Type ●●●
Switches ●●●	Transmission Controls ●●●	Windows ●●● 📷1 Window tint on left cab door is scratched

Windshield Wipers



Current O&MM
YES




Current Safety Manual
YES




ENGINE


Belts / Pulleys - ENGINE






Engine Oil Level / Condition



Engine Supports / Mounts


Exhaust / Muffler / Stack


Fuel Injection System


Intake / Air Filters


Operating Condition - ENGINE


Turbocharger / Blower


Apparent Other Engine Damage
NO

Blow By
NO

Fuel Leaks
NO


Oil Leaks
NO


Water in Oil
NO


Oil Pressure (H/L/N)
Normal

Smoke Color (B/D/L/W)
Normal

EMISSIONS

Aftertreatment Heat Shields /
Guards



DEF Lines / Wiring


Diesel Particulate Filter (DPF)
Condition / Service Hours


Aftertreatment System Codes
NO

Leaks / Type
NO

COOLING SYSTEM

Anti-Freeze Level / Color /
Condition

Red



Coolers


Fan


Fan Drive / Type
●●●

Fan Shrouds / Guards
●●●

Hoses / Tubes
●●●

Radiator
●●●

Water Pump
●●●

Compression in Radiator
NO

Coolant Leaks
NO

Oil in Anti-Freeze
NO

Standard Radiator
YES

ELECTRICAL, STARTING AND CHARGING SYSTEM

Alternator
●●●

Batteries / Cables
●●●

Product Link / Condition
●●●

Starter
●●●

Wiring
●●●

Work Lights
●●●

Active Codes
NO

Jump Start Terminal
YES

Signal Lights
YES

TRANSMISSION

Case - TRANSMISSION
●●●

Controls - TRANSMISSION
●●●

Cooler
●●●

Lines / Fittings - TRANSMISSION
●●●

Operating Condition -
TRANSMISSION
●●●

Pump - TRANSMISSION
●●●

Seals
●●●

Temp / Pressure Gauges
●●●

Transmission - Forward Shifts
●●●

Transmission - Reverse Shifts
●●●

Valves
●●●

Leaks - TRANSMISSION
YES

Transmission - Noisy
NO

STEERING

Articulate P & B <div><div></div><div></div><div></div></div>	King Pins <div><div></div><div></div><div></div></div>	Lines / Fittings <div><div></div><div></div><div></div></div>
Steering Column / Tilt <div><div></div><div></div><div></div></div>	Steering Cylinder <div><div></div><div></div><div></div></div>	Steering Frame <div><div></div><div></div><div></div></div>
Steering Linkage <div><div></div><div></div><div></div></div>	Steering Operating Condition <div><div></div><div></div><div></div></div>	Steering Pump <div><div></div><div></div><div></div></div>
Steering Valve <div><div></div><div></div><div></div></div>	Supplemental Steering <div><div></div><div></div><div></div></div>	Tie Rods / Rod Ends <div><div></div><div></div><div></div></div>
Wheel / Joystick <div><div></div><div></div><div></div></div>	Wheel Lean Cylinder - STEERING <div><div></div><div></div><div></div></div>	

BRAKE

Accumulators <div><div></div><div></div><div></div></div>	Brake Linkage <div><div></div><div></div><div></div></div>	Control Valve <div><div></div><div></div><div></div></div>
Lines <div><div></div><div></div><div></div></div>	Parking Brake Operation <div><div></div><div></div><div></div></div>	Pedal <div><div></div><div></div><div></div></div>
Service Brake Operation <div><div></div><div></div><div></div></div>		

DRIVECHAIN / TANDEMS

Differential <div><div></div><div></div><div></div></div>	Differential Lock / Operation <div><div></div><div></div><div></div></div>	Drivetrain / Tandem Leaks <div><div></div><div></div><div></div></div>
Planetary <div><div></div><div></div><div></div></div>	Tandem Housing / Drive Chains <div><div></div><div></div><div></div></div>	Wheel Lugs & Rims <div><div></div><div></div><div></div></div>

HYDRAULICS

Blade Cushion <div><div></div><div></div><div></div></div>	Circle Drive Box <div><div></div><div></div><div></div></div>	<div><div></div>1</div> Cylinder Mounts / Pins <div><div></div><div></div></div> <div>cylinder yoke mounts have movement</div>	<div><div></div>2</div>
---------------------------------------------------------------	------------------------------------------------------------------	-----------------------------------------------------------------------------------------------------------------------------------	-------------------------

Hydraulic Lines / Fittings
●●●

Hydraulic Pump
●●●

Hydraulic Valves
●●●


Lift Cylinders
●●●

Linkage
●●●

Operating Condition -
HYDRAULICS
●●●

Pump Drive Shaft
●●●

Saddle Pin / Actuator
●●●

Side Shift Cylinder 4
side sift cylinder is wet and chrome on
rod has scratches


Tank / Sight Glass / Cap
●●●


Tip Cylinder
●●●

Leaks - HYDRAULICS
NO

BLADE

Circle A Frame
●●●

Circle Frame 2
circle frame has cracks on left and
right side


Circle Shoes / Inserts 3
circle shoe inserts are worn

Cutting Edge
●●●

Cylinder Balls / Caps
●●●

Face / Moldboard
●●●

Frog / Base Edge
●●●

Moldboard Tip Brackets / Inserts 2
moldboard inserts are worn.

Ring Gear
●●●

Saddle
●●●

Tip Bracket Pivots / Bearings
●●●

RIPPER


Beam
●●●


Brackets / Studs
●●●



Cylinders
●●●

Frame
●●●

Lines / Fittings - RIPPER
●●●

Pins / Bushings 1
bushings on cylinder have movement

Shanks / Ripper (GET)

2 ripper G.E.T are worn

2 Shanks / Scarifier (GET)


TIRES

	Make / Serial#	Tread Depth in 1/32"	% Life Remaining	Recapped	Tread Cuts/Chunks	Side Cuts Section
Left Center	Maxum	16	48	NO	YES	YES
Left Front	Maxum	29	87	NO	YES	YES
Left Rear	Maxum	16	48	NO	YES	YES
Right Center	Maxum	15	45	NO	YES	YES
Right Front	Maxum	29	87	NO	YES	YES
Right Rear	Maxum	16	48	NO	YES	YES

Bias
YES

Radial
NO

Average Life Remaining - TIRES
61%

Tire Size - TIRES
17.5-25

MARKETING PHOTOS (29)











LINE ITEM PHOTOS (51)

Logged / Active Codes
NO

Logged Diagnostic Codes [Diagnostic Clock = 5234 hours] - Implement 140 (N9400359)				
Code	Description	Occ.	First	Last
246- 9	Proprietary CAN Data Link : Abnormal Update Rate	2	4669	5233
Logged Event Codes [Diagnostic Clock = 5234 hours] - Implement 140 (N9400359)				
Code	Description	Occ.	First	Last
No Logged Event Codes				
Active Diagnostic Codes - Implement 140 (N9400359)				
Code	Description			
246- 9	Proprietary CAN Data Link : Abnormal Update Rate			
Active Event Codes - Implement 140 (N9400359)				
Code	Description			
No Active Events				
System Communication Status - Active Problems - Implement 140 (N9400359)				
ECMs	Detected Problem	Data Link	Diagnostic Information	
Device 1: Implement 140 (N9400359)	Device #1 is unable to communicate on the data link.	J1939 #3	Diagnostic Code: 246- 9 - Service Hour Meter: 5233:53:45 -	

Decals



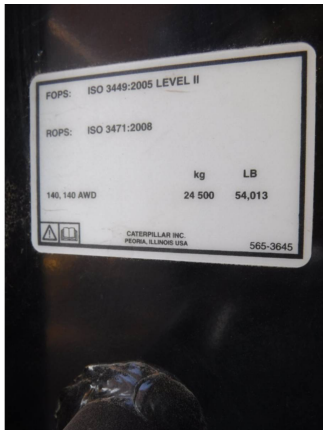
hood decals are peeling.



Seat Belt / Date



ROPS Certification Plate
YES



Safety Decals Legible
NO
safety decals are torn



Safety Locks / Pins
YES



Air Conditioner



Heater / Defroster



Interior Lights



Windows



Window tint on left cab door is scratched



Current O&MM

YES



Current Safety Manual

YES



Belts / Pulleys - ENGINE

●●●



Anti-Freeze Level / Color / Condition

●●●

Red



Circle Drive Box

●●●



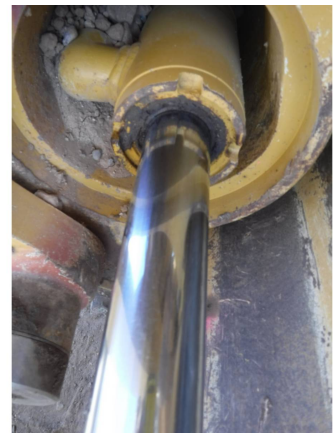
Cylinder Mounts / Pins

●●
cylinder yoke mounts have movement



Side Shift Cylinder

●●
side shift cylinder is wet and chrome on rod has scratches



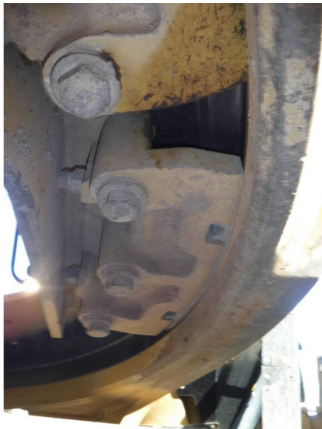
Circle Frame

●●
circle frame has cracks on left
and right side



Circle Shoes / Inserts

●●
circle shoe inserts are worn



Moldboard Tip Brackets / Inserts

●●
moldboard inserts are worn.



Pins / Bushings

●●
bushings on cylinder have movement



Shanks / Ripper (GET)

●●
2 ripper G.E.T are worn



	Make / Serial#	Tread Depth in 1/32"	% Life Remaining	Recapped	Tread Cuts/Chunks	Side Cuts Section
Left Center	Maxum	16	48	NO	YES	YES



	Make / Serial#	Tread Depth in 1/32"	% Life Remaining	Recapped	Tread Cuts/Chunks	Side Cuts Section
Left Front	Maxum	29	87	NO	YES	YES





	Make / Serial#	Tread Depth in 1/32"	% Life Remaining	Recapped	Tread Cuts/Chunks	Side Cuts Section
Left Rear	Maxum	16	48	NO	YES	YES



	Make / Serial#	Tread Depth in 1/32"	% Life Remaining	Recapped	Tread Cuts/Chunks	Side Cuts Section
Right Center	Maxum	15	45	NO	YES	YES



	Make / Serial#	Tread Depth in 1/32"	% Life Remaining	Recapped	Tread Cuts/Chunks	Side Cuts Section
Right Front	Maxum	29	87	NO	YES	YES





	Make / Serial#	Tread Depth in 1/32"	% Life Remaining	Recapped	Tread Cuts/Chunks	Side Cuts Section
Right Rear	Maxum	16	48	NO	YES	YES

