



2015 CAT 336FL TRACK EXCAVATORS

INSPECTION DETAILS

Inspection Type	Marketing
Inspection Form	Standard
Inspection #	10207700
Inspection Status	Completed
Created	06/06/25 11:39:19
Updated	06/06/25 16:28:40
Created By	Garcia, Jr
Inspector	Garcia, Jr
Salesperson	Schultis, Derrick R.
Stock #	E204987
Serial #	RKB01541
SMU / Hours	8,729
Location	Eloy, AZ, United States



FEATURES

General

- Air Conditioner
- Coupler - Quick
- Hand and Foot Control
- Radio - AM FM Radio
- Boom - 1 Piece
- Coupler Type - Hydraulic
- Lighting
- Stick
- Car Body - Standard
- Engine Enclosures
- Mirrors
- Straight Travel Pedal

Regulatory

- Ultra Low Sulfur Diesel Fuel

Attachments

- Bucket

CONDITION



Good



Fair



Poor

Approved Repair

GENERAL CONDITION

Body



Frame



General



ET Product Status Report
Download
YES

Logged / Active Codes
NO

Machine Starts and is Operable
YES

Visible Oil Leaks
NO

GENERAL APPEARANCE

Bumper



Car Body



Catwalk



Counterweight

Has scratches and dings



Crankcase Guard / Battery Box

Decals

Draw Bar

Eng. Enclose Hood / Stack

Engine Doors 1

Right rear pump compartment door
had light damage on lower corner

Fenders

Fuel Tank

Grab Irons

Hood

Main Frame Welds

Paint 1

Slight scratches

Radiator Grill & Shroud

Sheet Metal

Steps / Ladder

SAFETY ITEMS

Camera(s) ●●●	1	Horn ●●●	Seat Belt / Date ●●● May 2025	1
Travel Alarm ●●●				
ROPS YES		ROPS Certification Plate YES	1	Safety Decals In Place YES
Safety Decals Legible YES				

OPERATOR STATION

Air Conditioner ●●● Ambient Temp at 84° and Temp at Vent 50°	1	Armrests ●●●	Cab Filter / Heat Vent Louvres ●●●	
Dash Console ●●●		Door Latches / Hinges / Seals ●●●	Floor Boards / Mats ●●●	
Gauges ●●●		Headliner ●● Dirty. Part of wash	3	Heater / Defroster ●●● Ambient Temp at 81° and Temp at Vent 109°
Hour Meter - GAUGES, OPERATION STATION, CONSOLE ●● Monitor hours do not match hour meter.	1	Hydraulic Controls ●●●		Interior Lights ●●●
Interior Plastic / Fabric ●●●		Mirrors ●●●		Monitoring Display ●●●
Pans/Guards ●●●		Radio ●●●		Seat Cushions / Suspension / Type ●● Stained with grease and oil

Switches
●●●

Travel Controls (Type)
●●●

Visor / Sunshade
●●●

Windows
●●●

Windshield Wipers
●
UPPER is Inoperable

📷1

Current O&MM
YES
Cover is damaged

📷2 Current Safety Manual
YES

ENGINE

Belts / Pulleys - ENGINE
●●●

Engine Oil Level / Condition
●●●

Engine Supports / Mounts
●●●

Exhaust / Muffler / Stack
●●●

Fuel Injection System
●●●

Governor
●●●

Intake / Air Filters
●●●

Operating Condition - ENGINE
●●●

Turbocharger / Blower
●●●

Blow By
NO

Fuel Leaks
NO

Knocking
NO

Oil Leaks
NO

Service Needed
YES

Water in Oil
NO

Oil Pressure (H/L/N)
Normal

Smoke Color (B/D/L/W)
Normal

EMISSIONS

Aftertreatment Heat Shields /
Guards
●●●

DEF Lines / Wiring
●●●

Diesel Exhaust Fluid (DEF) Tank
●●●

Diesel Particulate Filter (DPF)
Condition / Service Hours
●●●

Aftertreatment System Codes NO	Leaks / Type NO	
--	---------------------------	--

COOLING SYSTEM

Anti-Freeze Level / Color / Condition ●●●	Belts / Pulleys - COOLING SYSTEM ●●●	Coolers ●●●
Fan ●●●	Fan Drive / Type ●●●	Fan Shrouds / Guards ●●●
Hoses / Tubes ●●●	Radiator ●●●	Water Pump ●●●
Compression in Radiator NO	Coolant Leaks NO	Oil in Anti-Freeze NO
Standard Radiator YES		

ELECTRICAL, STARTING AND CHARGING SYSTEM

Alternator ●●●	Batteries / Cables / Master Disconnect ●●●	Lighting ●●●	📷1
Starter ●●●	Wiring ●●●		
Ether Aid YES With bottle	📷1		

HYDRAULICS

Boom Cylinder ●●●	📷2	Bucket Cylinder ●●●	Control Linkage ●●●
Hose Lines ●●●		Hydraulic Swivel ●●●	Operating Condition - HYDRAULICS ●●●

Pump Drive
●●●

Pumps & Valves
●●●

Rotex
●●●

Stick Cylinder
●●●

1 Swing Gear
●●●

Swing Motors
●●●

Tank
●●●

Travel Motors
●●●

BOOM

Boom Condition
●●●

Boom Pins
●●●

Pins & Bushings - BOOM
●●●

Boom Length (Actual Length)
21'4"

STICK

Pins & Bushings - STICK
●●●

Stick Conditions
●●
HAS LARGE DENT FROM BUCKET
EYELET.

7 Stick Pins
●●●

Stick Length
12'10"

BUCKET

Bucket Bottom
●●
Cracked on edges.

2 Bucket Linkage
●●
SLIGHT MOVEMENT AT ALL JOINTS

2 Bucket Mounts
●●●

Bucket Sides
●●●

Teeth / Adapters
●●●

Quick Coupler
YES 1

Brand Cat	Quick Coupler (Make/Model) CAT			Width 41"		
UNDERCARRIAGE						
	Measurement (L)	% Worn (L)	Total Potential Hours (L)	Measurement (R)	% Worn (R)	Total Potential Hours (R)
Carrier Rollers Front	6.20	10		6.24	6	
Carrier Rollers Rear	6.24	6		6.20	10	
Idlers Front	.82	14		.84	21	
Links	4.82	21		4.82	21	
Pins & Bushings (External)	2.66	28		2.66	28	
Track Roller 1	.80	23		.82	30	
Track Roller 2	.78	15		.78	15	
Track Roller 3	GRD			GRD		
Track Roller 4	.78	15		.80	23	
Track Roller 5	GRD			GRD		
Track Roller 6	.80	23		.78	15	
Track Roller 7	GRD			GRD		
Track Roller 8	.80	23		.78	15	
Track Roller 9	.82	30		.82	30	
Track Shoe Grouser Height	1.04	23		1.04	23	
Track Frame - Left <div><div></div><div></div><div></div></div>		Track Frame - Right <div><div></div><div></div><div></div></div>				

Cannon GOOD	Link Part Number 6Y-2590/89	Track Shoes Width / Type Has 10 bent pads on left and 6 on the right side	2
----------------	--------------------------------	---	---

FINAL DRIVES

Housings, Left ●●●	Housings, Right ●●●	Planetaries / Differential, Left ●●●
Planetaries / Differential, Right ●●●		

MARKETING PHOTOS (32)

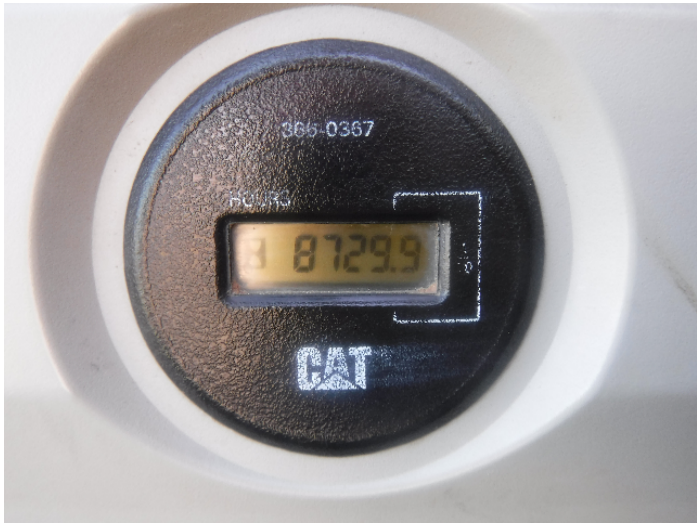










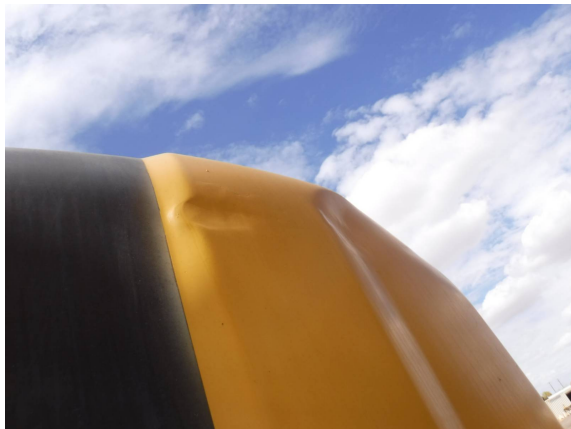


LINE ITEM PHOTOS (39)

Counterweight



Has scratches and dings



Engine Doors



Right rear pump compartment door had light damage on lower corner



Paint



Slight scratches



Camera(s)



Seat Belt / Date



May 2025



ROPS Certification Plate

YES



Air Conditioner



Ambient Temp at 84° and Temp
at Vent 50°



Headliner



Dirty. Part of wash



Heater / Defroster



Ambient Temp at 81° and Temp
at Vent 109°



Hour Meter - GAUGES,
OPERATION STATION,
CONSOLE



Monitor hours do not match
hour meter.



Seat Cushions / Suspension /
Type



Stained with grease and oil



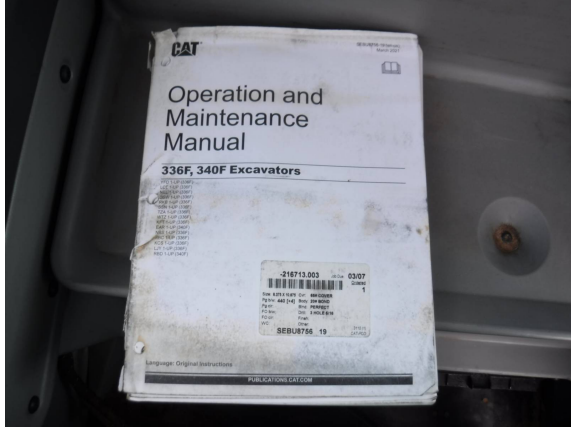
Windshield Wipers



UPPER is Inoperable



Current O&MM
YES
Cover is damaged



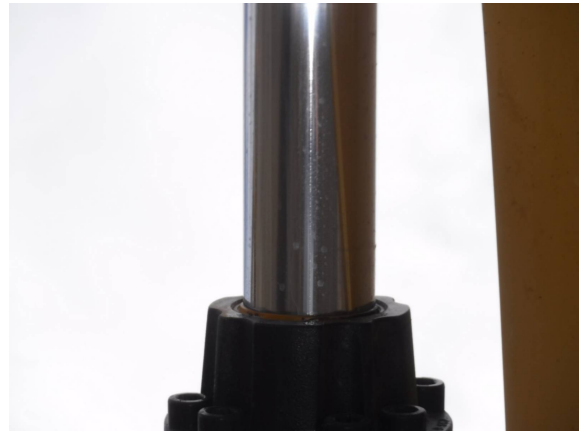
Lighting
●●●



Ether Aid
YES
With bottle



Boom Cylinder



Stick Cylinder



Stick Conditions



HAS LARGE DENT FROM
BUCKET EYELET.





Bucket Bottom

●●
Cracked on edges.



Bucket Linkage



SLIGHT MOVEMENT AT ALL JOINTS



Quick Coupler YES



Track Shoes Width / Type

Has 10 bent pads on left and 6 on the right side

