



2004 CAT
330CL
TRACK EXCAVATORS

INSPECTION DETAILS

Inspection Type	Consignment
Inspection Form	Standard
Inspection #	10212636
Inspection Status	Inspected
Created	06/27/25 20:25:41
Updated	06/30/25 19:55:44
Created By	Gabriel, James P.
Inspector	Gabriel, James P.
Engine Serial #	4ZF09579
Serial #	DKY01833
SMU / Hours	8,173
Location	Brawley, CA 92227, United States



FEATURES

General

- **Air Conditioner**
Equipped but control panel is inoperative.
- **Lighting**
- **Straight Travel Pedal**
- **Boom - 1 Piece**
21FT 4IN
- **Mirrors**
- **Undercarriage, Long**
- **Coupler - Quick**
- **Stick**
12FT 10IN

Regulatory

- **Emissions Level - EPA - EPA Tier 2**
- **Tier 2 Compliant**
- **Emissions Level - EU - EU Stage II**
- **Regulatory Status - EPA / CARB / EU**

Attachments

- **Bucket**

CONDITION

Good

Fair

Poor

Approved Repair

GENERAL CONDITION

Body <div><div><div></div><div></div></div></div> <div>Multiple body panels are dented.</div>	2 <div><div></div></div>	Frame <div><div><div></div><div></div><div></div></div></div>	General <div><div><div></div><div></div></div></div> <div>Machine missing cab headliner and has broken switch panels. Has a few leaks.</div>
ET Product Status Report Download <div>YES</div>		Machine Starts and is Operable <div>YES</div>	S.O.S. (All Compartments) <div>NO</div> <div>Engine and Hydraulic</div>
VIDS/VIMS Download Available <div>NO</div>			

GENERAL APPEARANCE

<div>Bumper</div> <div><div><div></div><div></div></div></div> <div>Left side bumper is dented at the rear.</div>	<div><div><div></div><div></div></div></div>	<div>Counterweight</div> <div><div><div></div><div></div></div></div> <div>Counterweight has some scrapes and gouges.</div>	<div><div><div></div><div></div></div></div>	<div>Crankcase Guard / Battery Box</div> <div><div><div></div><div></div><div></div></div></div>	
<div>Decals</div> <div><div><div></div><div></div></div></div> <div>Decals are scuffed and scratched.</div>		<div>Eng. Enclose Hood / Stack</div> <div><div><div></div><div></div><div></div></div></div>		<div>Engine Doors</div> <div><div><div></div><div></div></div></div> <div>Hydraulic pump door is dented. Door still closes and latches.</div>	<div><div><div></div><div></div></div></div>
<div>Fuel Tank</div> <div><div><div></div><div></div></div></div> <div>Fuel cap breather is broken.</div>	<div><div><div></div><div></div></div></div>	<div>Grab Irons</div> <div><div><div></div><div></div></div></div> <div>Grab iron near toolbox is bent but still functional.</div>	<div><div><div></div><div></div></div></div>	<div>Hood</div> <div><div><div></div><div></div><div></div></div></div>	
<div>Main Frame Welds</div> <div><div><div></div><div></div><div></div></div></div>		<div>Paint</div> <div><div><div></div><div></div></div></div> <div>Paint is faded and oxidized.</div>		<div>Radiator Grill & Shroud</div> <div><div><div></div><div></div></div></div> <div>Radiator/Cooling pack door is dented.</div>	<div><div><div></div><div></div></div></div>

Sheet Metal



Panel below cab and fuel and hydraulic tank cover is dented.
Toolbox is dented.



Steps / Ladder



Both left and right track frame steps are bent.



Cleaning Required

YES

Machine needs cleaned.

Extra Fuel Tanks

NO

SAFETY ITEMS

Horn



Horn inoperative.

Seat Belt / Date



Seat belt date tags are expired.

Secondary Exit



Travel Alarm



Travel alarm is inoperative. Travel alarm cancel switch is inoperative.

ROPS

NO

FOPS

ROPS Certification Plate

NO

Safety Decals In Place

NO

Rear swing clearance and stick swing area decals are missing.

OPERATOR STATION

Air Conditioner



A/C controls do not seem to function.

Armrests



Armrest height adjustment is seized.
Armrests and cups are missing parts.

Cab Filter / Heat Vent Louvres



Dash Console



Several panels are broken.



Door Latches / Hinges / Seals



Door seals are torn.

Floor Boards / Mats



Floormat is missing sections.



Gauges



Monitor panel display is not functional.



Headliner



Missing both sections of headliner.



Heater / Defroster



A/C controls do not seem to function.

Hour Meter - GAUGES,
OPERATION STATION, CONSOLE
●●●●
7757 Hours



Hydraulic Controls
●●●
Oil is seeping from pilot valve.

Interior Lights
●●●
Dome light inoperative.

Interior Plastic / Fabric
●●●
Several liner panels are broken.

Mirrors
●●●●

Monitoring Display
●●●
Monitor panel display is not functional.



Radio
●●●
Radio inoperative.

Seat Cushions / Suspension /
Type
●●●
Air suspension. Seat suspension is
very loose and adjustments are
sized.



Switches
●●●
Switch panel bezel is broken. Cab light
and travel speed switch inoperative.



Visor / Sunshade
●●●●

Windows
●●●
Overhead window latch is missing.



Windshield Wipers
●●●
Windshield wipers inoperative.

Current O&MM
NO

Current Parts Manual
NO

Current Safety Manual
NO

Fuel Level - OPERATOR STATION
Unknown.

ENGINE

Belts / Pulleys - ENGINE
●●●●

Engine Oil Level / Condition
●●●●

Engine Supports / Mounts
●●●●

Exhaust / Muffler / Stack
●●●●

Fuel Injection System
●●●●

Governor
●●●●

Intake / Air Filters
●●●●

Operating Condition - ENGINE
●●●●

Turbocharger / Blower
●●●●

Blow By
NO

Emissions Decal Legible
YES



Fuel Leaks
NO

Knocking
NO

Oil Leaks
NO

Water in Oil
NO

Engine S/N
4ZF25601

Oil Pressure (H/L/N)
Normal

Smoke Color (B/D/L/W)
Normal

COOLING SYSTEM


Anti-Freeze Level / Color /
Condition
●●●

Belts / Pulleys - COOLING
SYSTEM
●●●

Coolers
●●●

Fan
●●●

Fan Drive / Type
●●●

Fan Shrouds / Guards 2
●
Missing part of fan guard.

Hoses / Tubes
●●●

Radiator
●●●

Water Pump
●●●

Compression in Radiator
NO

Coolant Leaks
NO

Oil in Anti-Freeze
NO

Standard Radiator
YES

ELECTRICAL, STARTING AND CHARGING SYSTEM

Alternator
●●●

Batteries / Cables / Master
Disconnect
●●●

Lighting
●●
Light switch does not seem to
function.

Pre-Heater
●●●


Starter
●●●

Wiring
●●●

Block Heater
NO

Ether Aid
NO

HYDRAULICS

Boom Cylinder 2
●●
Left boom cylinder is leaking. Right
boom cylinder lines are clocked
wrong.

Bucket Cylinder
●●●

Control Linkage
●●●

Hose Lines



Has hoses leaking in pump area.



Hydraulic Swivel



Operating Condition - HYDRAULICS



Due to leaks.

Pump Drive



Pumps & Valves



Rotex



Has a little play.

Stick Cylinder



Swing Gear



Has a little play.

Swing Motors



Tank



Travel Motors



Swing Drive Oil Level

Good

BOOM

Boom Condition



Boom has had crack welded. Has another crack forming.



Pins & Bushings - BOOM



Boom pins and bushings are worn and have a little play.

Boom Length (Actual Length)

21FT 4IN

STICK

Pins & Bushings - STICK



Stick pin and bushing is worn and has play.

Stick Conditions



Stick Length

12FT 8IN

BUCKET

Bucket Linkage



Bucket linkage is worn and loose.

Quick Coupler
YES

Notes - BUCKET
Client said machine will come with a 24IN bucket. During inspection machine had a 30IN Ripper bucket. See Account manager for details.

UNDERCARRIAGE

	Measurement (L)	% Worn (L)	Total Potential Hours (L)	Measurement (R)	% Worn (R)	Total Potential Hours (R)
Carrier Rollers Front	156	16		156	16	
Idlers Front	22	28		22	28	
Links	123	14		123	14	
Pins & Bushings (External)	68.3	54		68.3	54	
Track Roller 1	20	15		20	15	
Track Shoe Grouser Height	27	32		27	32	

Track Frame - Left



1

Track Frame - Right



1

Pins & Bushings Turned?
NO

FINAL DRIVES

Housings, Left

Housings, Right

Planetaries / Differential, Left



2

Planetaries / Differential, Right



1



Magnetic Plugs Removed &
Checked?

NO

MARKETING PHOTOS (24)









IF NOT, CHANGE CARD TO MAX
PATTERN BEFORE OPERATING MACHINE
FAILURE TO DO SO COULD RESULT IN
INJURY.



LINE ITEM PHOTOS (52)

Body



Multiple body panels are dented.



Bumper



Left side bumper is dented at the rear.



Counterweight



Counterweight has some scrapes and gouges.



Engine Doors



Hydraulic pump door is dented.
Door still closes and latches.



Fuel Tank



Fuel cap breather is broken.



Grab Irons



Grab iron near toolbox is bent
but still functional.



Radiator Grill & Shroud

●●
Radiator/Cooling pack door is dented.



Sheet Metal

●●
Panel below cab and fuel and hydraulic tank cover is dented.
Toolbox is dented.



Steps / Ladder



Both left and right track frame steps are bent.



Dash Console



Several panels are broken.





Floor Boards / Mats

● Floormat is missing sections.



Gauges

● Monitor panel display is not functional.



Headliner

●
Missing both sections of headliner.



Hour Meter - GAUGES, OPERATION STATION, CONSOLE

●●●
7757 Hours



Monitoring Display

●
Monitor panel display is not functional.



Seat Cushions / Suspension /

Type

●●
Air suspension. Seat suspension is very loose and adjustments are siezed.



Switches

●
Switch panel bezel is broken.
Cab light and travel speed switch inoperative.



Windows

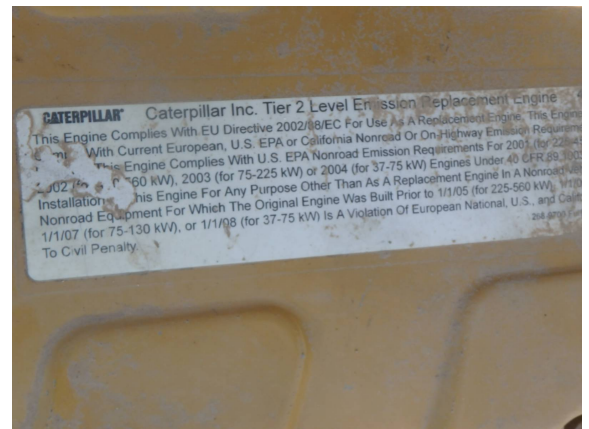
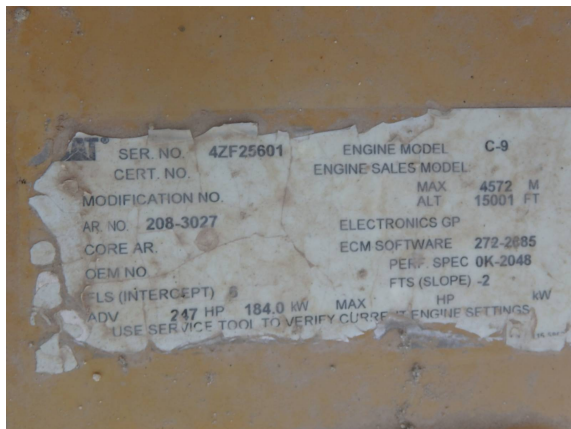


Overhead window latch is missing.



Emissions Decal Legible

YES



Fan Shrouds / Guards



Missing part of fan guard.



Boom Cylinder



Left boom cylinder is leaking.
Right boom cylinder lines are
clocked wrong.



Hose Lines



Has hoses leaking in pump
area.



Boom Condition





Boom has had crack welded.
Has another crack forming.



	Measurement (L)	% Worn (L)	Total Potential Hours (L)	Measurement (R)	% Worn (R)	Total Potential Hours (R)
Carrier Rollers Front	156	16		156	16	



	Measurement (L)	% Worn (L)	Total Potential Hours (L)	Measurement (R)	% Worn (R)	Total Potential Hours (R)
Track Roller 1	20	15		20	15	
						

	Measurement (L)	% Worn (L)	Total Potential Hours (L)	Measurement (R)	% Worn (R)	Total Potential Hours (R)
Track Shoe Grouser Height	27	32		27	32	
						

Track Frame - Left



Track Frame - Right



Planetaries / Differential, Left



Planetaries / Differential, Right

