



2017 CAT  
12M3 AWD  
MOTOR GRADERS

INSPECTION DETAILS

Inspection Type	Consignment
Inspection Form	Standard
Inspection #	10218034
Inspection Status	Completed
Created	07/23/25 11:33:19
Updated	07/23/25 17:33:37
Created By	Schultis, Derrick R.
Inspector	Schultis, Derrick R.
Salesperson	Schultis, Derrick R.
Serial #	0N9B00428
SMU / Hours	9,135
Location	Eloy, AZ 85131, United States



FEATURES

General

- Air Conditioner
- Cab Profile - Low
- Drive - All Wheel
- Mirrors
- Pushblock
- ROPS - Enclosed
- Air Suspension Seat
- Circle Clutch
- Guard, Transmission
- Moldboard Size - 14'
- Radio - Bluetooth
- Steering Type - Joystick
- Beacon
- Differential Lock
- Lighting
- Product Link  
*Inquire for options*
- Ripper - Multi-Shank  
*5 OF 5 SHANKS WITH 9 OF 9 SCARIFIER SHANKS.*
- Tire Size  
*17.5-25*

Regulatory

- Emissions Level
- Ultra Low Sulfur Diesel Fuel

Technology

- Accugrade Ready

Attachments

- Scarifier  
*Mounted on ripper beam*

CONDITION

Good

Fair

Poor

Approved Repair

GENERAL CONDITION

Body	Frame - GENERAL CONDITION	General
<div><div></div><div></div><div></div></div>	<div><div></div><div></div><div></div></div>	<div><div></div><div></div><div></div></div>
ET Product Status Report Download NO	Logged / Active Codes YES	<div><div></div></div> 2Machine Starts and is Operable YES
S.O.S. (All Compartments) NO	Tires are Aired Up and Drivable YES	VIDS/VIMS Download Available NO
Visible Oil Leaks NO		

GENERAL APPEARANCE

Battery Box	<div><div></div><div></div><div></div></div> <div><div></div></div> 1	Bumper	<div><div></div><div></div><div></div></div>	Cab or Canopy	<div><div></div><div></div><div></div></div> <div><div></div></div> 2
Crankcase Guard / Transmission Guard	<div><div></div><div></div><div></div></div> <div><div></div></div> 1	Decals	<div><div></div><div></div></div> <div>Fading and scratched</div>	Draw Bar	<div><div></div><div></div></div> <div>Has movement</div> <div><div></div></div> 1
Engine Enclosures	<div><div></div><div></div><div></div></div>	Fiberglass	<div><div></div><div></div><div></div></div>	Front Frame Welds	<div><div></div><div></div><div></div></div>
Fuel Tank	<div><div></div><div></div><div></div></div> <div><div></div></div> 2	Grab Irons	<div><div></div><div></div><div></div></div>	Hood	<div><div></div><div></div><div></div></div>
Paint	<div><div></div><div></div><div></div></div> <div>Faded</div> <div><div></div></div> 1	Plastic (Exterior)	<div><div></div><div></div><div></div></div>	Radiator Grill	<div><div></div><div></div><div></div></div> <div><div></div></div> 1

Rear Frame Welds



Sheet Metal



Steps / Ladder



Lh steps bent on first and second rung. Rh step bent on first rung

Cleaning Required

**NO**

## SAFETY ITEMS

Back Up Alarm



Beacon / Strobe



Beacon works has broken housing

Camera(s)



Blue screen not working

Horn



ROPS



Seat Belt / Date



Jan 2017

Secondary Exit



Parking Brake Functioning

**YES**

ROPS Certification Plate

**YES**



Safety Decals In Place

**YES**

Safety Decals Legible

**YES**

Safety Locks / Pins

**YES**

Service Brakes Functioning

**YES**

## OPERATOR STATION

Air Conditioner



63 cab temp and 93 ambient temperature



Armrests



Normal wear

Cab Filter / Heat Vent Louvres



Dash Console



Door Latches / Hinges / Seals



Floor Boards / Mats



Gauges



Headliner



Heater / Defroster



Hour Meter - GAUGES,  
OPERATION STATION, CONSOLE



Hydraulic Controls



Interior Lights



Interior Plastic / Fabric  
●●●

Mirrors  
●●●

Monitoring Display  
●●●

Pans/Guards  
●●●

Radio  
●●●

Seat Cushions / Suspension / Type  
●●●  
Air  
📷2

Switches  
●●●  
📷1

Transmission Controls  
●●●

Visor / Sunshade  
●●●  
📷1

Windows  
●●●  
📷2

Windshield Wipers  
●●●

Current O&MM  
YES  
📷1

Current Parts Manual  
YES  
CD

Current Safety Manual  
YES  
📷1

Sound Proofing  
YES

Diesel Exhaust Fluid (DEF) Level - OPERATOR STATION  
100%  
📷1

Fuel Level - OPERATOR STATION  
85%  
📷1

ENGINE

Engine Oil Level / Condition  
●●●

Engine Supports / Mounts  
●●●

Exhaust / Muffler / Stack  
●●●

Fuel Injection System  
●●●

Governor  
●●●

Operating Condition - ENGINE  
●●●

Turbocharger / Blower  
●●●

Apparent Other Engine Damage  
NO

Blow By  
NO

Emissions Decal Legible  
YES



Fuel Leaks <b>NO</b>	Has Engine been rebuilt? <b>NO</b>	Knocking <b>NO</b>	
Oil Leaks <b>NO</b>	Service Needed <b>NO</b>	Water in Oil <b>NO</b>	
Engine S/N SYE16256	Hours On Engine 9135	Oil Pressure (H/L/N) Normal 48 psi	1
Smoke Color (B/D/L/W) Normal			

TECHNOLOGY

GNSS Receiver 	4	Rotary Position Sensor 	1
-------------------	---	----------------------------	---

EMISSIONS

Aftertreatment Heat Shields / Guards 	DEF Lines / Wiring 	Diesel Particulate Filter (DPF) Condition / Service Hours 
Aftertreatment System Codes <b>NO</b>	Leaks / Type <b>NO</b>	
Diesel Exhaust Fluid (DEF) Level 100%		

COOLING SYSTEM

Anti-Freeze Level / Color / Condition 	Belts / Pulleys - COOLING SYSTEM 	Coolers 
Fan 	Fan Drive / Type 	Fan Shrouds / Guards 
Hoses / Tubes 	Radiator 	Water Pump 

Compression in Radiator  
**NO**

Coolant Leaks  
**NO**

Folded Core Radiator  
**NO**

Modular Radiator  
**NO**


Oil in Anti-Freeze  
**NO**


Sand Blast Grid  
**NO**

Standard Radiator  
**YES**

**ELECTRICAL, STARTING AND CHARGING SYSTEM**


Alternator  


Batteries / Cables  


Product Link / Condition  


Starter  


Wiring  



Work Lights  


Jump Start Terminal  
**YES**


Signal Lights  
**YES**


**TRANSMISSION**


Case - TRANSMISSION  


Controls - TRANSMISSION  



Cooler  



Lines / Fittings - TRANSMISSION  



Operating Condition -  
TRANSMISSION  


Pump - TRANSMISSION  


Seals  


Temp / Pressure Gauges  


Transmission - Forward Shifts  


Transmission - Reverse Shifts  


Transmission Oil Filter Condition  
/ Service Hours  


Valves  


Auto Shift  
**YES**

Leaks - TRANSMISSION  
**NO**

Powershift  
**YES**

Transmission - Noisy  
**NO**

ALL WHEEL DRIVE

All Wheel Drive Lines / Fittings <div><div></div><div></div><div></div></div>	All Wheel Drive Operating Condition <div><div></div><div></div><div></div></div>	All Wheel Drive Valve <div><div></div><div></div><div></div></div>
Controls / Settings <div><div></div><div></div><div></div></div>	Drive Motors <div><div></div><div></div><div></div></div>	Final Drives / Oil Levels <div><div></div><div></div><div></div></div>
Pump <div><div></div><div></div><div></div></div>		

STEERING

Articulate P & B <div><div></div><div></div><div></div></div>	King Pins <div><div></div><div></div><div></div></div>	Lines / Fittings <div><div></div><div></div><div></div></div>
Steering Cylinder <div><div></div><div></div><div></div></div>	Steering Frame <div><div></div><div></div><div></div></div>	Steering Linkage <div><div></div><div></div><div></div></div>
Steering Operating Condition <div><div></div><div></div><div></div></div>	Steering Pump <div><div></div><div></div><div></div></div>	Steering Valve <div><div></div><div></div><div></div></div>
Supplemental Steering <div><div></div><div></div><div></div></div>	Tie Rods / Rod Ends <div><div></div><div></div><div></div></div>	Wheel / Joystick <div><div></div><div></div><div></div></div> <div>Joystick</div>
Wheel Lean Cylinder - STEERING <div><div></div><div></div><div></div></div>		

BRAKE

Accumulators <div><div></div><div></div><div></div></div>	Control Valve <div><div></div><div></div><div></div></div>	Lines <div><div></div><div></div><div></div></div>
Parking Brake Operation <div><div></div><div></div><div></div></div>	Pedal <div><div></div><div></div><div></div></div>	Service Brake Operation <div><div></div><div></div><div></div></div>

DRIVECHAIN / TANDEMS

Differential <div><div></div><div></div><div></div></div>	Differential Lock / Operation <div><div></div><div></div><div></div></div>	Drivetrain / Tandem Leaks <div><div></div><div></div><div></div></div>
--	---	---

Oscillating Hubs / Oil Level



Planetary



Tandem Housing / Drive Chains



Wheel Lugs & Rims



## HYDRAULICS

Blade Cushion



Circle Drive Box



Circle Side Shift Cylinder



Cylinder Mounts / Pins



Have slight movement

Hydraulic Lines / Fittings



Hydraulic Oil Filter Condition /  
Service Hours



Hydraulic Pump



Hydraulic Valves



Lift Cylinders



Operating Condition -  
HYDRAULICS



Pump Drive Shaft



Saddle Pin / Actuator



Side Shift Cylinder



Tank / Sight Glass / Cap



Tip Cylinder



Leaks - HYDRAULICS

**NO**

## BLADE

Circle A Frame



Circle Frame



Cutting Edge



Cylinder Balls / Caps



Slight movement

Face / Moldboard



Frog / Base Edge



Moldboard Tip Brackets / Inserts



Slight movement can be adjusted

Saddle



Tip Bracket Pivots / Bearings



RIPPER

Beam ●●●	📷1	Brackets / Studs ●●●	Cylinders ●●●	📷1
Frame ●●●	📷1	Lines / Fittings - RIPPER ●●●	Pins / Bushings ●●●	
Shanks / Ripper (GET) ●●●	📷1	Shanks / Scarifier (GET) ●●● 8 out of 9 scarifires	📷1	

TIRES

	Make / Serial#	Tread Depth in 1/32"	% Life Remaining	Recapped	Tread Cuts/Chunks	Side Cuts Section
Left Center	Maxam	30	78%	NO	YES	NO
Left Front	Yokohama	23	60%	NO	YES	NO
Left Rear	Yokohama	18	47%	NO	YES	NO
Right Center	Yokohama	16	42%	NO	YES	NO
Right Front	Yokohama	18	47%	NO	YES	NO
Right Rear	Yokohama	16	42%	NO	YES	NO
Radial YES						
Average Life Remaining - TIRES 53.07		Tire Size - TIRES 17.5-25				

COMMENTS, MISC. REPAIRS, GENERAL REMARKS

comment 1

Machine has on board air  
compressor mounted on lh  
tandum



2

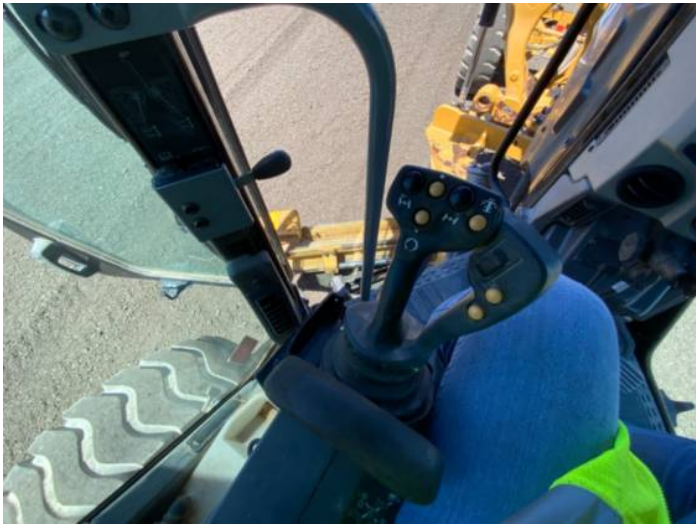
MARKETING PHOTOS (30)







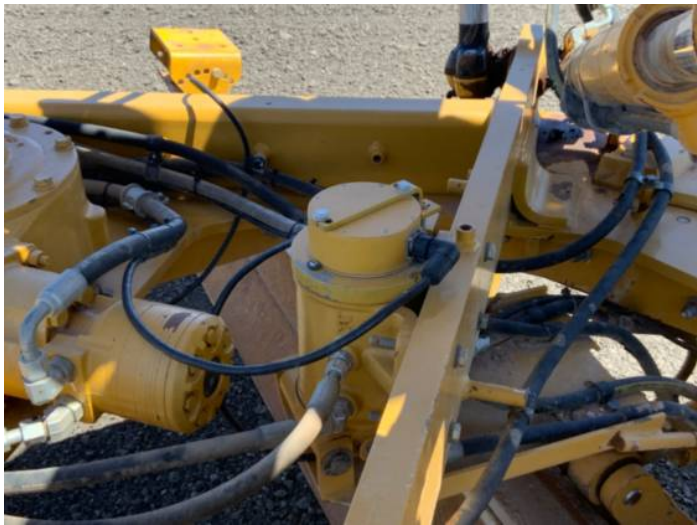
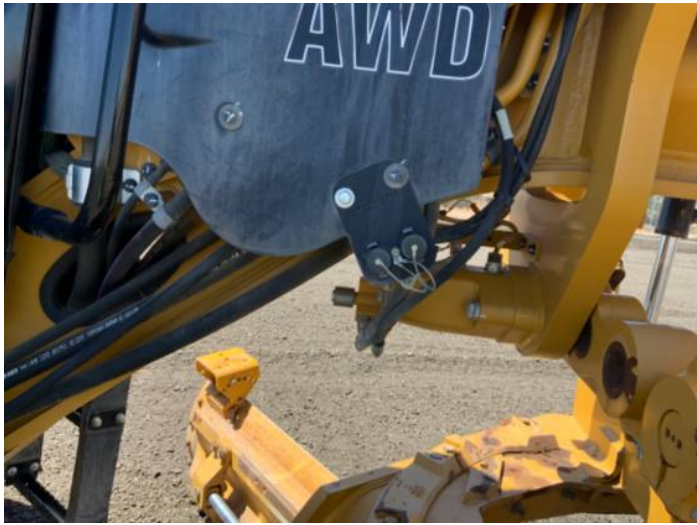














LINE ITEM PHOTOS (62)

Logged / Active Codes  
YES



Battery Box  
●●●



Cab or Canopy  
●●●



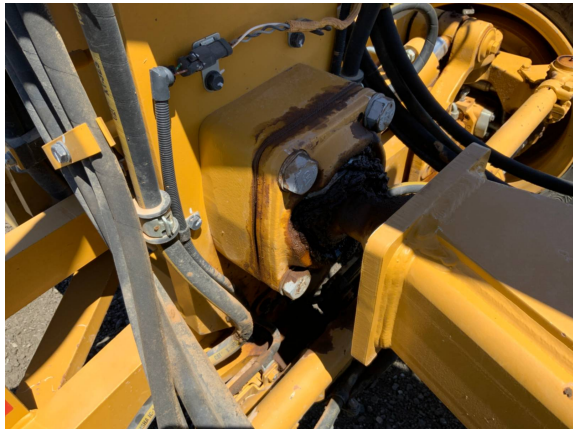
---

Crankcase Guard /  
Transmission Guard  
●●●



---

Draw Bar  
●●  
Has movement



---

Fuel Tank  
●●●





Paint  
●●●●  
Faded



Radiator Grill  
●●●●



Steps / Ladder  
●●

Lh steps bent on first and second rung. Rh step bent on first rung



---

### Beacon / Strobe



Beacon works has broken  
housing



---

### Camera(s)



Blue screen not working



---

### Seat Belt / Date



Jan 2017



---

ROPS Certification Plate  
**YES**



Air Conditioner



63 cab temp and 93 ambient  
temperature



---

Cab Filter / Heat Vent Louvres





## Dash Console



## Heater / Defroster



## Hour Meter - GAUGES, OPERATION STATION, CONSOLE



---

## Interior Lights

●●●



---

## Seat Cushions / Suspension /

Type

●●●

Air



---

## Switches

●●●



---

## Visor / Sunshade



---

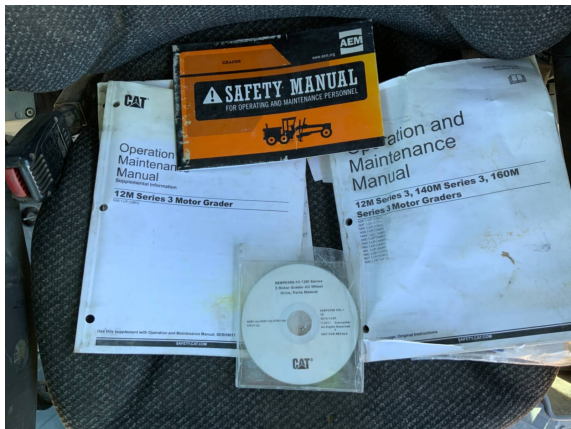
## Windows



---

## Current O&MM

YES





Current Safety Manual  
**YES**



Diesel Exhaust Fluid (DEF) Level  
- OPERATOR STATION

100%



Fuel Level - OPERATOR STATION

85%



## GNSS Receiver



## Rotary Position Sensor





Tank / Sight Glass / Cap



Cutting Edge



Face / Moldboard



Frog / Base Edge



Beam



Cylinders





---

## Frame



---

## Shanks / Ripper (GET)



---

## Shanks / Scarifier (GET)



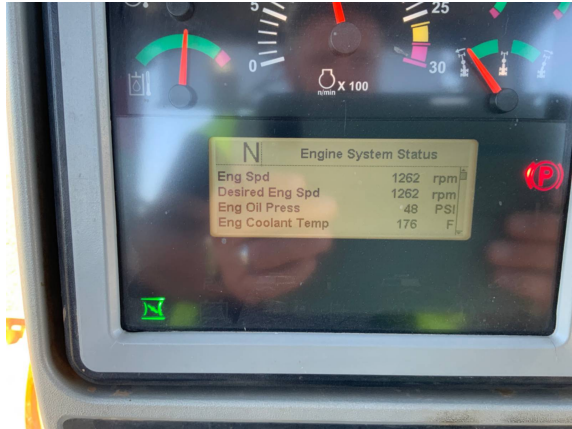
8 out of 9 scarifiers





## Oil Pressure (H/L/N)

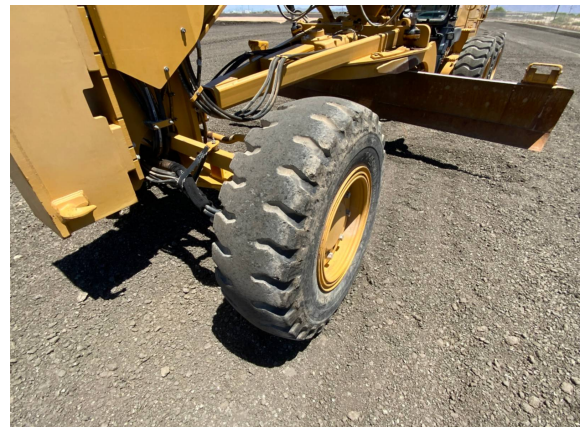
Normal 48 psi



	Make / Serial#	Tread Depth in 1/32"	% Life Remaining	Recapped	Tread Cuts/Chunks	Side Cuts Section
Left Center	Maxam	30	78%	<b>NO</b>	<b>YES</b>	<b>NO</b>



	Make / Serial#	Tread Depth in 1/32"	% Life Remaining	Recapped	Tread Cuts/Chunks	Side Cuts Section
Left Front	Yokohama	23	60%	<b>NO</b>	<b>YES</b>	<b>NO</b>









	Make / Serial#	Tread Depth in 1/32"	% Life Remaining	Recapped	Tread Cuts/Chunks	Side Cuts Section
Right Rear	Yokohama	16	42%	<b>NO</b>	<b>YES</b>	<b>NO</b>



### comment 1

Machine has on board air compressor mounted on lh tandum

