



2018 CAT
335FLCR
TRACK EXCAVATORS

INSPECTION DETAILS

Inspection Type	Marketing
Inspection Form	Standard
Inspection #	10146043
Inspection Status	Reviewed
Created	09/03/24 17:27:48
Updated	09/04/24 13:33:02
Created By	Calderas, Marco
Inspector	Calderas, Marco
Reviewers	Calderas, Marco
Salesperson	Schultis, Derrick R.
Stock #	E197796
Serial #	SGJ20021
SMU / Hours	5,646



FEATURES

General

- Air Conditioner
- Coupler Type - Hydraulic
- Lighting
- Stick
- Boom - 1 Piece
- Engine Enclosures
- Mirrors
- Coupler - Quick
- Hand and Foot Control
- Radio - AM FM Radio

Regulatory

- Emissions Level - EU - IV
- Emissions Level - Japan - STEP 4 FINAL
- Ultra Low Sulfur Diesel Fuel

CONDITION



Good



Fair



Poor

Approved Repair

GENERAL CONDITION

Body



Frame



General



ET Product Status Report
Download
YES

Logged / Active Codes
NO

Machine Starts and is Operable
YES

S.O.S. (All Compartments)
NO

Visible Oil Leaks
NO

GENERAL APPEARANCE

Bumper



Car Body



Catwalk



Counterweight



Crankcase Guard / Battery Box



Decals



Decal on left rear door is scratched

Eng. Enclose Hood / Stack



Engine Doors



Right rear door has dent in top center.

Fenders



Fuel Tank



Grab Irons



Cab handrail is bent on bottom end.

Hood



Main Frame Welds



Paint



Radiator Grill & Shroud



Sheet Metal



Panel under cab is bent.



Steps / Ladder



Cleaning Required
NO

Extra Fuel Tanks
NO

SAFETY ITEMS

Camera(s)



Horn



Seat Belt / Date



JULY 2022



1

Secondary Exit



Travel Alarm



ROPS

YES

ROPS Certification Plate

YES

Safety Decals In Place

YES

Safety Decals Legible

YES

Safety decal on left rear corner is scratched.



1

OPERATOR STATION

Air Conditioner



Ambient Temp at 94.5° and Temp at Vent 48.7°



1

Armrests



Dash Console



Door Latches / Hinges / Seals



Floor Boards / Mats



Gauges



Headliner



Heater / Defroster



Ambient Temp at 100° and Temp at Vent 115°



1

Hour Meter - GAUGES, OPERATION STATION, CONSOLE



Hydraulic Controls



Interior Lights



Interior Plastic / Fabric



Mirrors



Monitoring Display



Radio



Seat Cushions / Suspension / Type



Stain on seat cushion



3

Switches



Travel Controls (Type)



Visor / Sunshade ●●●	Windows ●●●	Windshield Wipers ●●●	
Current O&MM YES	📷1	Current Parts Manual NO	Current Safety Manual YES 📷1
QR LABEL YES	📷1		


ENGINE

Belts / Pulleys - ENGINE ●●●	Engine Oil Level / Condition ●●●	Engine Supports / Mounts ●●●	
Exhaust / Muffler / Stack ●●●	Fuel Injection System ●●●	Intake / Air Filters ●●●	
Operating Condition - ENGINE ●●●	Turbocharger / Blower ●●●		
Blow By NO	Fuel Leaks NO	Knocking NO	
Oil Leaks NO	Water in Oil NO		
Oil Pressure (H/L/N) Normal	Smoke Color (B/D/L/W) Normal		

EMISSIONS


DEF Lines / Wiring ●●●	Diesel Exhaust Fluid (DEF) Tank ●●●		
Aftertreatment System Codes NO	Leaks / Type NO		


COOLING SYSTEM


Anti-Freeze Level / Color / Condition



Coolers


Fan


Fan Drive / Type


Fan Shrouds / Guards


Hoses / Tubes


Radiator


Water Pump


Compression in Radiator
NO


Coolant Leaks
NO

Oil in Anti-Freeze
NO

Standard Radiator
YES

ELECTRICAL, STARTING AND CHARGING SYSTEM

Alternator


Batteries / Cables / Master Disconnect


Lighting


Starter


Wiring



Ether Aid
YES




HYDRAULICS


Boom Cylinder


Bucket Cylinder



Control Linkage



Hose Lines


HOSE LINES


Hydraulic Swivel


Operating Condition - HYDRAULICS


Pump Drive


Pumps & Valves


Rotex
●●●

Stick Cylinder
●●●

Swing Gear
●●●

Swing Motors

Tank
●●●

Travel Motors
●●●

BOOM

Boom Condition
●●●

Boom Pins
●●●

Pins & Bushings - BOOM

Boom Length (Actual Length)
244

STICK

Pins & Bushings - STICK

Stick Conditions

Stick Pins
●●●

Stick Length
126

BUCKET

Bucket Bottom
●●●
Dent on bucket bottom

Bucket Linkage

Bucket Mounts

Bucket Sides

2Teeth / Adapters
●●●2

Quick Coupler
YES

Brand
Werk Brau

Width
36in

UNDERCARRIAGE

Measurement (L)

% Worn (L)

Total Potential
Hours (L)

Measurement (R)

% Worn (R)

Total Potential
Hours (R)

Carrier Rollers Front	6.2	8	6.2	8
Carrier Rollers Rear	6.2	8	6.2	8
Idlers Front	.84	21	.84	21
Links	4.82	21	4.82	21
Pins & Bushings (External)	2.7	45	2.7	45
Track Roller 1	Guard			
Track Roller 2	Guard			
Track Roller 3	Guard			
Track Roller 4	Guard			
Track Roller 5	Guard			
Track Roller 6	Guard			
Track Roller 7	Guard			
Track Roller 8	Guard			
Track Roller 9	.76	10	.76	10
Track Shoe Grouser Height	1.06	23	1.06	23

Track Frame - Left

Track Frame - Right

Front step is bent. Can be repaired.

Cannon

Good


Carrier Rollers


Good



Idlers


Good

FINAL DRIVES

Housings, Left


2 Housings, Right


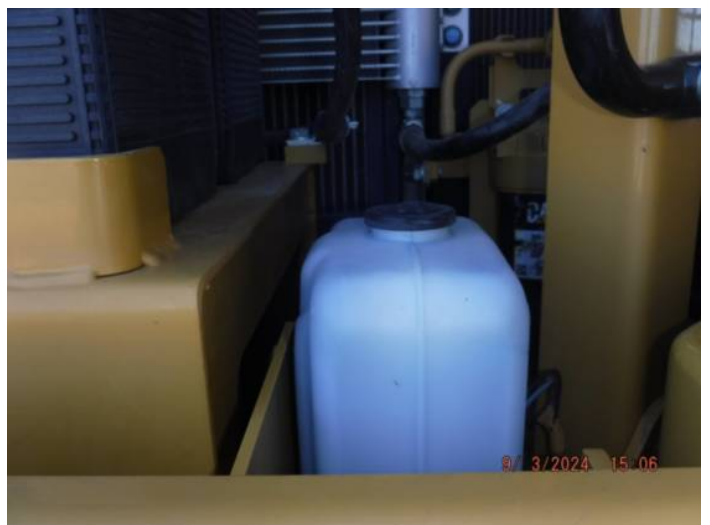
2 Planetaries / Differential, Left


Planetaries / Differential, Right


MARKETING PHOTOS (28)











LINE ITEM PHOTOS (38)

Decals



Decal on left rear door is scratched



Engine Doors



Right rear door has dent in top center.



Grab Irons



Cab handrail is bent on bottom end.



Paint





Sheet Metal



Panel under cab is bent.



Seat Belt / Date



JULY 2022



Safety Decals Legible

YES

Safety decal on left rear corner is scratched.



Air Conditioner

●●●

Ambient Temp at 94.5° and
Temp at Vent 48.7°



Heater / Defroster

●●●

Ambient Temp at 100° and
Temp at Vent 115°

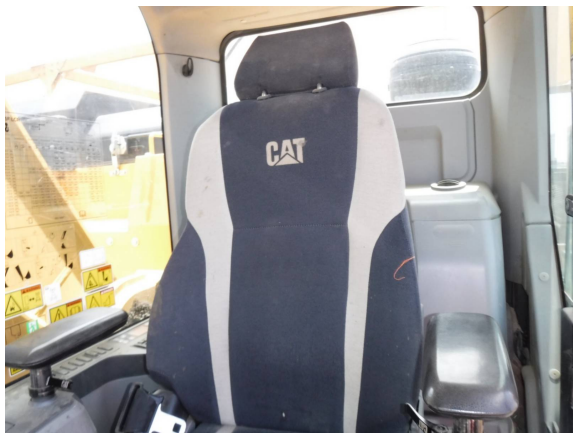


Seat Cushions / Suspension /

Type

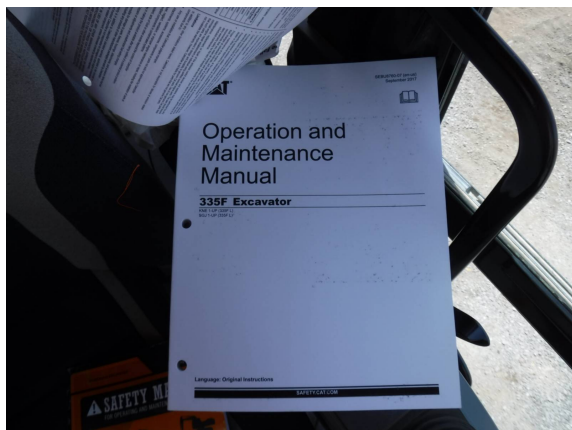


Stain on seat cushion



Current O&MM

YES



Current Safety Manual
YES



QR LABEL
YES



Ether Aid
YES



Bucket Bottom



Dent on bucket bottom



Bucket Sides



Teeth / Adapters



Track Frame - Right



Front step is bent. Can be repaired.



Housings, Left



Housings, Right

