

2020 CAT 330-07 TRACK EXCAVATORS

PRICE

\$Call

WHOLESALE

\$Call



SALES INFORMATION

Serial #	WCH10378	SMU / Hours	3,183
Status	Used	Rating	As-Is
Availability	Available		

BENEFITS

- Online Owner's Manual

FEATURES

General

- Air Conditioner
- Coupler Type - Hydraulic
- Lighting
- Stick
- Boom - 1 Piece
- Engine Enclosures
- Mirrors
- Straight Travel Pedal
- Coupler - Quick
- Hand and Foot Control
- Radio - Bluetooth
- Undercarriage, Long

Regulatory

- Ultra Low Sulfur Diesel Fuel

CONDITION

Good

Fair

Poor

GENERAL CONDITION

Body	Frame	General
<div><div></div><div></div><div></div></div>	<div><div></div><div></div><div></div></div>	<div><div></div><div></div><div></div></div>
ET Product Status Report Download	Logged / Active Codes	Machine Starts and is Operable
YES	NO	YES
Visible Oil Leaks		
NO		

GENERAL APPEARANCE

Bumper	Car Body	Counterweight
<div><div></div><div></div><div></div></div>	<div><div></div><div></div><div></div></div>	<div><div></div><div></div><div></div></div>
Crankcase Guard / Battery Box	Decals	Draw Bar
<div><div></div><div></div><div></div></div>	<div><div></div><div></div><div></div></div>	<div><div></div><div></div><div></div></div>
Eng. Enclose Hood / Stack	Engine Doors	Fenders
<div><div></div><div></div><div></div></div>	<div><div></div><div></div><div></div></div>	<div><div></div><div></div><div></div></div>
Fuel Tank	Grab Irons	Hood
<div><div></div><div></div><div></div></div>	<div><div></div><div></div><div></div></div>	<div><div></div><div></div><div></div></div>
Main Frame Welds	Paint	Radiator Grill & Shroud
<div><div></div><div></div><div></div></div>	<div><div></div><div></div><div></div></div>	<div><div></div><div></div><div></div></div>
Sheet Metal	Steps / Ladder	
<div><div></div><div></div><div></div></div>	<div><div></div><div></div><div></div></div>	
Cleaning Required	Extra Fuel Tanks	
NO	NO	

SAFETY ITEMS

Camera(s)	Horn	Seat Belt / Date
<div><div></div><div></div><div></div></div>	<div><div></div><div></div><div></div></div>	<div><div></div><div></div><div></div></div>
		MARCH 2025
Secondary Exit	Travel Alarm	
<div><div></div><div></div><div></div></div>	<div><div></div><div></div><div></div></div>	

ROPS YES	ROPS Certification Plate YES	Safety Decals In Place YES
Safety Decals Legible YES		

OPERATOR STATION

Air Conditioner ●●● Ambient Temp at 70° and Temp at Vent 36°	Armrests ●●●	Dash Console ●●●
Door Latches / Hinges / Seals ●●●	Floor Boards / Mats ●●●	Gauges ●●●
Headliner ●●●	Heater / Defroster ●●● Ambient Temp at 45° and Temp at Vent 110°	Hour Meter - GAUGES, OPERATION STATION, CONSOLE ●●●
Hydraulic Controls ●●●	Interior Lights ●●●	Mirrors ●●●
Monitoring Display ●●●	Radio ●●●	Seat Cushions / Suspension / Type ●●● Seat cushion stains.
Switches ●●●	Travel Controls (Type) ●●●	Windows ●●●
Windshield Wipers ●●●		
Current O&MM YES	Current Parts Manual NO	Current Safety Manual NO Missing safety manual.

ENGINE


Belts / Pulleys - ENGINE ●●●	Engine Oil Level / Condition ●●●	Engine Supports / Mounts ●●●
Exhaust / Muffler / Stack ●●●	Fuel Injection System ●●●	Intake / Air Filters ●●●
Operating Condition - ENGINE ●●●	Turbocharger / Blower ●●●	
Blow By NO	Emissions Decal Legible YES	Fuel Leaks NO


Knocking
NO

Oil Leaks
NO

Water in Oil
NO

EMISSIONS


DEF Lines / Wiring


Diesel Exhaust Fluid (DEF) Tank


Aftertreatment System
Codes
YES


Leaks / Type
NO

COOLING SYSTEM

Anti-Freeze Level / Color /
Condition


Coolers


Fan


Hoses / Tubes


Radiator


Water Pump


Compression in Radiator
NO


Coolant Leaks
NO

Oil in Anti-Freeze
NO

Standard Radiator
YES

ELECTRICAL, STARTING AND CHARGING SYSTEM

Alternator


Batteries / Cables / Master
Disconnect



Lighting



Starter


Wiring



HYDRAULICS

Boom Cylinder


Bucket Cylinder



Control Linkage


Hose Lines


Hydraulic Swivel


Operating Condition -
HYDRAULICS


Pump Drive


Pumps & Valves


Rotex


Stick Cylinder


Swing Gear


Swing Motors




Tank



Travel Motors

BOOM

Boom Condition



Boom Pins



Pins & Bushings - BOOM



Boom Length (Actual Length)

241in

STICK

Pins & Bushings - STICK



Stick Conditions



Stick Pins



Stick Length

148in

BUCKET

Bucket Bottom



Bucket Linkage



Bucket Mounts



Bucket Sides



Teeth / Adapters



Quick Coupler

YES

Quick coupler is in good working condition.

Brand

Cat

Serial Number

GYD00441

Width

47in 1.74YD3

UNDERCARRIAGE

	Measurement (L)	% Worn (L)	Total Potential Hours (L)	Measurement (R)	% Worn (R)	Total Potential Hours (R)
Carrier Rollers Front	.82	12		.82	12	
Carrier Rollers Rear	.82	12		.82	12	
Idlers Front	.82	12		.82	12	
Idlers Rear	1			1		
Links	4.5	12		4.5	12	

Pins & Bushings (External)	2.55	18	2.55	18
Pins & Bushings (Internal)	1		1	
Segments	1		1	
Track Roller 1	.70	10	.70	10
Track Roller 10	1		1	
Track Roller 11	1		1	
Track Roller 12	1		1	
Track Roller 2	.70	10	.70	10
Track Roller 3	Guard		1	
Track Roller 4	.70	10	.70	10
Track Roller 5	Guard		1	
Track Roller 6	.70	10	.70	10
Track Roller 7	Guard		1	
Track Roller 8	.70	10	.70	10
Track Roller 9	.70	10	.70	10
Track Shoe Grouser Height	1.2	18	1.2	18
Track Frame - Left ●●●		Track Frame - Right ●●●		
Cannon Good		Carrier Rollers Good	Idlers Good	

FINAL DRIVES

Housings, Left



Housings, Right



Planetaries / Differential, Left



Planetaries / Differential, Right











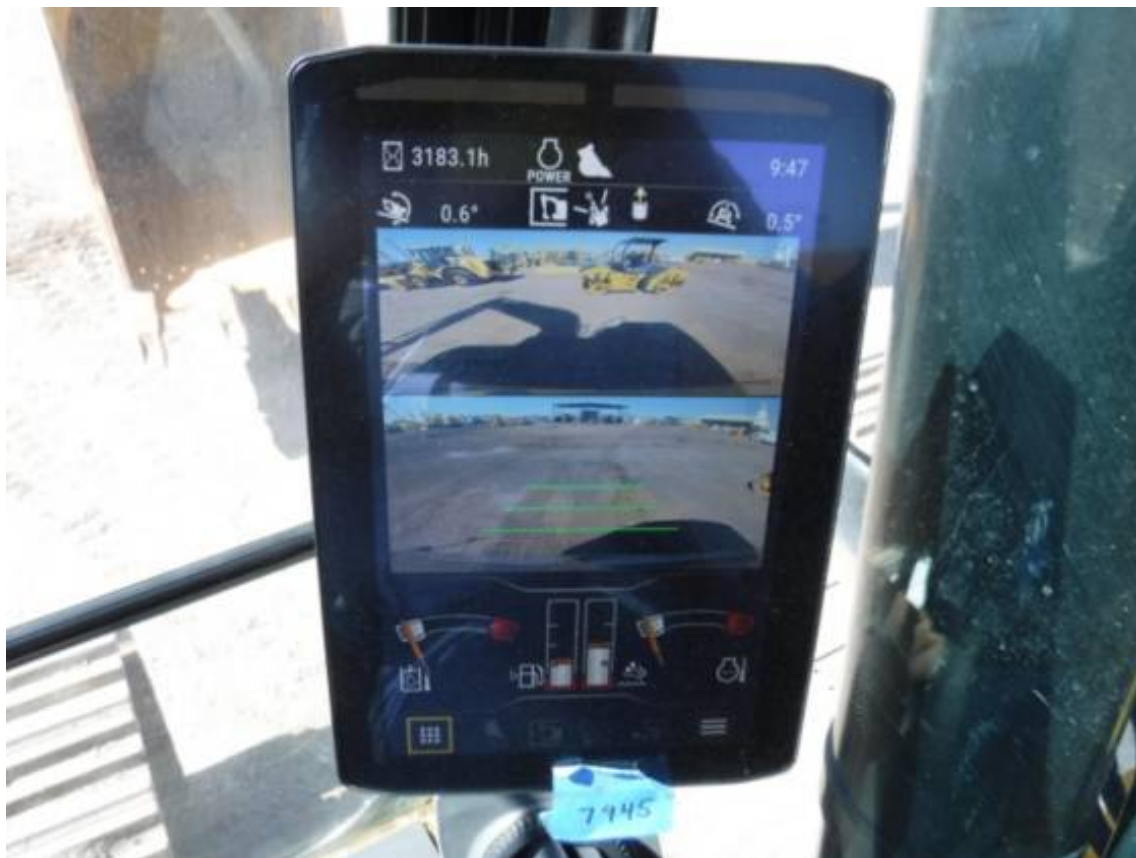






















CAT[®] CATERPILLAR[®]
CAT[®] CATERPILLAR[®] 

MODEL	330
BUILD	078

PRODUCT IDENTIFICATION NUMBER ***CAT00330CWCH10378***



CATERPILLAR INC.
PEORIA, IL 61629
USA

MADE IN JAPAN
OF DOMESTIC AND
FOREIGN COMPONENTS

DUPLICATE

1 INCHES 1 INCHES