



2021 CAT  
1415  
MOTOR GRADERS

INSPECTION DETAILS

|                   |                               |
|-------------------|-------------------------------|
| Inspection Type   | Marketing                     |
| Inspection Form   | Standard                      |
| Inspection #      | 10129196                      |
| Inspection Status | Completed                     |
| Created           | 06/19/24 17:14:21             |
| Updated           | 06/24/24 14:40:17             |
| Created By        | Calderas, Marco               |
| Inspector         | Calderas, Marco               |
| Reviewers         | Calderas, Marco               |
| Salesperson       | Schultis, Derrick R.          |
| Stock #           | E196477                       |
| Serial #          | EN400152                      |
| SMU / Hours       | 2,260                         |
| Location          | Eloy, AZ 85131, United States |



FEATURES

General

- Air Conditioner
- Circle Clutch
- Drive - Tandem
- Lighting
- Product Link
- Ripper - Multi-Shank
- Supplemental Steering
- Air Suspension Seat
- Defroster Fan
- Ether Aid
- Mirrors
- Pushblock
- ROPS - Enclosed
- Throttle Lock
- Auto Shift
- Differential Lock
- Guard, Transmission
- Moldboard Size - 16'
- Radio - AM FM Radio
- Steering Type - Joystick
- Tire Size

Emissions

- Emissions Level - EPA - EPA TIER 4f
- Ultra Low Sulfur Diesel Fuel

CONDITION



Good



Fair



Poor

Approved Repair

GENERAL CONDITION

Body



Frame - GENERAL CONDITION



General



ET Product Status Report  
Download  
**YES**

Logged / Active Codes  
**NO**

Machine Starts and is Operable  
**YES**

S.O.S. (All Compartments)  
**NO**

Tires are Aired Up and Drivable  
**YES**

Visible Oil Leaks  
**NO**

GENERAL APPEARANCE

Battery Box



Cab or Canopy



Counterweight



paint is chipping and scratched



Crankcase Guard / Transmission  
Guard

Decals  
  
Hood decals are cracked and faded



Draw Bar

Engine Enclosures

Fiberglass

Front Frame Welds

Fuel Tank

Grab Irons

Hood

Paint

Plastic (Exterior)

Pre-Cleaner Bowl

Radiator Grill

Rear Frame Welds

Sheet Metal

Steps / Ladder

Cleaning Required  
**NO**

SAFETY ITEMS

Back Up Alarm  
●●●

Camera(s)  
●●●

Horn  
●●●

ROPS  
●●●

Seat Belt / Date  
●●●

Parking Brake Functioning  
**YES**

ROPS Certification Plate  
**YES**

📷1 Safety Decals In Place  
**YES**

Safety Decals Legible  
**YES**

📷2 Safety Locks / Pins  
**YES**

Service Brakes Functioning  
**YES**

OPERATOR STATION

Air Conditioner  
●●●

📷1 Armrests  
●●●

Cab Filter / Heat Vent Louvres  
●●●

Circulating fan  
●  
does not work

📷1 Dash Console  
●●●

Door Latches / Hinges / Seals  
●●●

Floor Boards / Mats  
●●●

Gauges  
●●●

Headliner  
●●●

Heater / Defroster  
●●●

📷1 Hour Meter - GAUGES,  
OPERATION STATION, CONSOLE  
●●●

Hydraulic Controls  
●●●

Interior Lights  
●●●

Interior Plastic / Fabric  
●●●

Mirrors  
●●●

Monitoring Display  
●●●

Pans/Guards  
●●●

Radio  
●●●

Seat Cushions / Suspension /  
Type  
●●●

Switches  
●●●

Transmission Controls  
●●●

Visor / Sunshade



Windows



Windshield Wipers



Rear washer fluid not spraying



Current O&MM

**YES**



Current Parts Manual

**NO**

Current Safety Manual

**YES**



## ENGINE

Belts / Pulleys - ENGINE



Engine Oil Level / Condition



Engine Supports / Mounts



Exhaust / Muffler / Stack



Fuel Injection System



Intake / Air Filters



Operating Condition - ENGINE



Turbocharger / Blower



Apparent Other Engine Damage

**NO**

Blow By

**NO**

Emissions Decal Legible

**YES**



Fuel Leaks

**NO**

Knocking

**NO**

Oil Leaks

**NO**

Water in Oil

**NO**

Oil Pressure (H/L/N)

Normal

Smoke Color (B/D/L/W)

Normal

## EMISSIONS

Aftertreatment Heat Shields /  
Guards



DEF Lines / Wiring



Aftertreatment System Codes

**NO**

Leaks / Type

**NO**

## COOLING SYSTEM

|  |   |  |   |
|--|---|--|---|
| Anti-Freeze Level / Color / Condition<br><div><div></div><div></div><div></div></div><br>red | 1 | Coolers<br><div><div></div><div></div><div></div></div>              | Fan<br><div><div></div><div></div><div></div></div>           |
| Fan Drive / Type<br><div><div></div><div></div><div></div></div>                             |   | Fan Shrouds / Guards<br><div><div></div><div></div><div></div></div> | Hoses / Tubes<br><div><div></div><div></div><div></div></div> |
| Radiator<br><div><div></div><div></div><div></div></div>                                     |   | Water Pump<br><div><div></div><div></div><div></div></div>           |   |
| Compression in Radiator<br><b>NO</b>   |   | Coolant Leaks<br><b>NO</b>   | Oil in Anti-Freeze<br><b>NO</b>                               |
| Standard Radiator<br><b>YES</b>  |   |  |   |

## ELECTRICAL, STARTING AND CHARGING SYSTEM

|  |  |   |
|--|--|---|
| Alternator<br><div><div></div><div></div><div></div></div> | Batteries / Cables<br><div><div></div><div></div><div></div></div> | Starter<br><div><div></div><div></div><div></div></div> |
| Wiring<br><div><div></div><div></div><div></div></div>     | Work Lights<br><div><div></div><div></div><div></div></div>        |   |
| Active Codes<br><b>NO</b>                                  | Ether Aid<br><b>YES</b>  | Signal Lights<br><b>YES</b>                             |

## TRANSMISSION

|   |  |   |
|---|--|---|
| Case - TRANSMISSION<br><div><div></div><div></div><div></div></div>             | Controls - TRANSMISSION<br><div><div></div><div></div><div></div></div>            | Cooler<br><div><div></div><div></div><div></div></div>                        |
| Lines / Fittings - TRANSMISSION<br><div><div></div><div></div><div></div></div> | Operating Condition - TRANSMISSION<br><div><div></div><div></div><div></div></div> | Seals<br><div><div></div><div></div><div></div></div>                         |
| Temp / Pressure Gauges<br><div><div></div><div></div><div></div></div>          | Transmission - Forward Shifts<br><div><div></div><div></div><div></div></div>      | Transmission - Reverse Shifts<br><div><div></div><div></div><div></div></div> |
| Auto Shift<br><b>YES</b>  | Leaks - TRANSMISSION<br><b>NO</b>  | Transmission - Noisy<br><b>NO</b>   |

STEERING

|  |  |  |
|--|--|--|
| Articulate P & B<br><div><div></div><div></div><div></div></div>             | King Pins<br><div><div></div><div></div><div></div></div>        | Lines / Fittings<br><div><div></div><div></div><div></div></div>               |
| Steering Cylinder<br><div><div></div><div></div><div></div></div>            | Steering Frame<br><div><div></div><div></div><div></div></div>   | Steering Linkage<br><div><div></div><div></div><div></div></div>               |
| Steering Operating Condition<br><div><div></div><div></div><div></div></div> | Steering Pump<br><div><div></div><div></div><div></div></div>    | Steering Valve<br><div><div></div><div></div><div></div></div>                 |
| Tie Rods / Rod Ends<br><div><div></div><div></div><div></div></div>          | Wheel / Joystick<br><div><div></div><div></div><div></div></div> | Wheel Lean Cylinder - STEERING<br><div><div></div><div></div><div></div></div> |

BRAKE

|   |   |   |
|---|---|---|
| Accumulators<br><div><div></div><div></div><div></div></div>            | Brake Linkage<br><div><div></div><div></div><div></div></div>           | Control Valve<br><div><div></div><div></div><div></div></div> |
| Lines<br><div><div></div><div></div><div></div></div>                   | Parking Brake Operation<br><div><div></div><div></div><div></div></div> | Pedal<br><div><div></div><div></div><div></div></div>         |
| Service Brake Operation<br><div><div></div><div></div><div></div></div> |   |   |

DRIVECHAIN / TANDEMS

|  |   |   |
|--|---|---|
| Differential<br><div><div></div><div></div><div></div></div> | Differential Lock / Operation<br><div><div></div><div></div><div></div></div> | Drivetrain / Tandem Leaks<br><div><div></div><div></div><div></div></div> |
| Planetary<br><div><div></div><div></div><div></div></div>    | Tandem Housing / Drive Chains<br><div><div></div><div></div><div></div></div> | Wheel Lugs & Rims<br><div><div></div><div></div><div></div></div>         |

HYDRAULICS

|  |  |  |
|--|--|--|
| Circle Drive Box<br><div><div></div><div></div><div></div></div>           | Circle Side Shift Cylinder<br><div><div></div><div></div><div></div></div> | Cylinder Mounts / Pins<br><div><div></div><div></div><div></div></div> |
| Hydraulic Lines / Fittings<br><div><div></div><div></div><div></div></div> | Hydraulic Pump<br><div><div></div><div></div><div></div></div>             | Hydraulic Valves<br><div><div></div><div></div><div></div></div>       |



|              |               |    |    |    |     |     |
|--------------|---------------|----|----|----|-----|-----|
| Left Center  | Michelin xha2 | 25 | 59 | NO | YES | YES |
| Left Front   | Michelin xha2 | 37 | 88 | NO | YES | YES |
| Left Rear    | Michelin xha2 | 25 | 59 | NO | YES | YES |
| Right Center | Michelin xha2 | 25 | 59 | NO | YES | YES |
| Right Front  | Michelin xha2 | 37 | 88 | NO | YES | YES |
| Right Rear   | Michelin xha2 | 25 | 59 | NO | YES | YES |

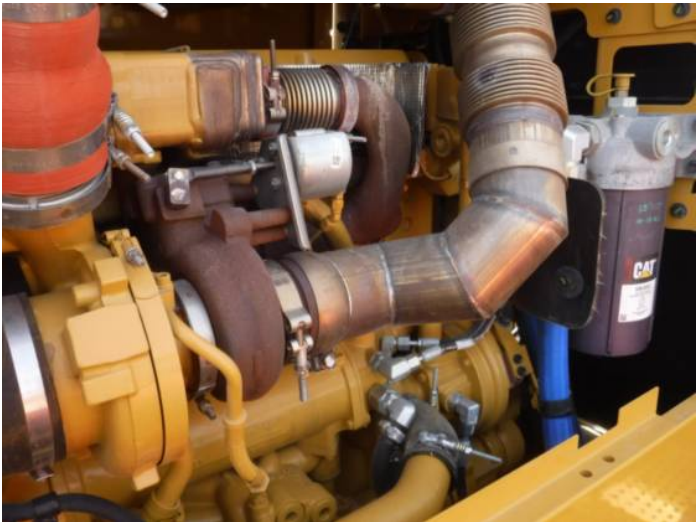
|                                       |                              |
|---------------------------------------|------------------------------|
| Bias<br>NO                            | Radial<br>YES                |
| Average Life Remaining - TIRES<br>69% | Tire Size - TIRES<br>20.5r25 |

MARKETING PHOTOS (31)













## LINE ITEM PHOTOS (40)

### Counterweight



paint is chipping and scratched



### Decals



Hood decals are cracked and faded



### ROPS Certification Plate

YES



Safety Decals Legible  
**YES**



Air Conditioner  
●●●



Circulating fan  
●  
does not work



## Heater / Defroster



## Windshield Wipers



Rear washer fluid not spraying



## Current O&MM

**YES**



Current Safety Manual  
**YES**



Belts / Pulleys - ENGINE  
●●●



Emissions Decal Legible  
**YES**



Anti-Freeze Level / Color /  
Condition  
●●●●  
red



Leaks - HYDRAULICS  
**NO**



Cylinder Balls / Caps  
●●  
Have movement both lift and  
center shift cylinders



Shanks / Ripper (GET)



4 of the ripper teeth are worn



|             | Make / Serial# | Tread Depth in<br>1/32" | % Life<br>Remaining | Recapped  | Tread<br>Cuts/Chunks | Side Cuts<br>Section |
|-------------|----------------|-------------------------|---------------------|-----------|----------------------|----------------------|
| Left Center | Michelin xha2  | 25                      | 59                  | <b>NO</b> | <b>YES</b>           | <b>YES</b>           |

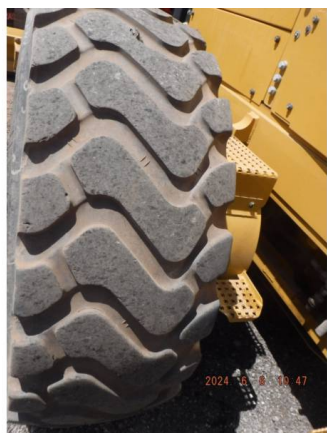




|            | Make / Serial# | Tread Depth in<br>1/32" | % Life<br>Remaining | Recapped | Tread<br>Cuts/Chunks | Side Cuts<br>Section |
|------------|----------------|-------------------------|---------------------|----------|----------------------|----------------------|
| Left Front | Michelin xha2  | 37                      | 88                  | NO       | YES                  | YES                  |



|           | Make / Serial# | Tread Depth in<br>1/32" | % Life<br>Remaining | Recapped | Tread<br>Cuts/Chunks | Side Cuts<br>Section |
|-----------|----------------|-------------------------|---------------------|----------|----------------------|----------------------|
| Left Rear | Michelin xha2  | 25                      | 59                  | NO       | YES                  | YES                  |



|              | Make / Serial# | Tread Depth in<br>1/32" | % Life<br>Remaining | Recapped | Tread<br>Cuts/Chunks | Side Cuts<br>Section |
|--------------|----------------|-------------------------|---------------------|----------|----------------------|----------------------|
| Right Center | Michelin xha2  | 25                      | 59                  | NO       | YES                  | YES                  |





|             | Make / Serial# | Tread Depth in<br>1/32" | % Life<br>Remaining | Recapped | Tread<br>Cuts/Chunks | Side Cuts<br>Section |
|-------------|----------------|-------------------------|---------------------|----------|----------------------|----------------------|
| Right Front | Michelin xha2  | 37                      | 88                  | NO       | YES                  | YES                  |



|            | Make / Serial# | Tread Depth in<br>1/32" | % Life<br>Remaining | Recapped | Tread<br>Cuts/Chunks | Side Cuts<br>Section |
|------------|----------------|-------------------------|---------------------|----------|----------------------|----------------------|
| Right Rear | Michelin xha2  | 25                      | 59                  | NO       | YES                  | YES                  |

