



2024 CAT
42007XE
BACKHOE LOADER

INSPECTION DETAILS

| | |
|-------------------|-------------------------|
| Inspection Type | Trade |
| Inspection Form | Standard |
| Inspection # | 10234325 |
| Inspection Status | Completed |
| Created | 09/24/25 16:44:32 |
| Updated | 09/25/25 13:41:56 |
| Created By | Willis, Joseph |
| Inspector | Willis, Joseph |
| Reviewers | Willis, Joseph |
| Salesperson | Schultis, Derrick R. |
| Stock # | E198532 |
| Serial # | H9X03174 |
| SMU / Hours | 609 |
| Location | Eloy, AZ, United States |



FEATURES

General

- Air Conditioner
- Controls, Joystick
- Engine Enclosures
- Integrated Toolcarrier
- Product Link
- Rear Coupler
- Steering - 2 Wheel
- Air Suspension Seat
- Differential Lock
- Front Auxiliary Hydraulics - 3 Valve
- Lighting
- Radio - Bluetooth
- Ride Control
- Stick - Extended
- Auxiliary Hydraulics Pressure
- Drive - 4 Wheel
- Front Coupler
- Pattern Changer
- Rear Auxiliary Hydraulics
- ROPS - Enclosed

Regulatory

- Emissions Level - EPA - EPA TIER 4f
- Regulatory Status - CAT_Korea
- Emissions Level - EU - EU STAGE V
- Regulatory Status - CAT_NR_EPA/CARB_MLIT_R120_EU_China Export
- Emissions Level - Japan - STEP 4 FINAL
- Ultra Low Sulfur Diesel Fuel

CONDITION

Good

Fair

Poor

Approved Repair

GENERAL CONDITION

| | | |
|--|--|--|
| Body | Frame | General |
| <div><div></div><div></div><div></div></div> | <div><div></div><div></div><div></div></div> | <div><div></div><div></div><div></div></div> |
| ET Product Status Report Download | Logged / Active Codes | Machine Starts and is Operable |
| YES | NO | YES |
| S.O.S. (All Compartments) | Tires are Aired Up and Drivable | Visible Oil Leaks |
| NO | YES | NO |
| ENGINE, TRANSMISSION, HYDRAULIC | | |

GENERAL APPEARANCE

| | | |
|---|--|--|
| Battery Box | Cab or Canopy | Counterweight |
| <div><div></div><div></div><div></div></div> | <div><div></div><div></div><div></div></div> | <div><div></div><div></div><div></div></div> |
| Crankcase Guard / Transmission Guard | Decals | Engine Enclosures |
| <div><div></div><div></div><div></div></div> | <div><div></div><div></div></div> <div>Peeling on right side of boom and missing on hood (cover under the service letter PS55342) Warranty</div> | <div><div></div><div></div><div></div></div> |
| Fenders | Fuel Tank | Grab Irons |
| <div><div></div><div></div></div> <div>Discolored</div> | <div><div></div><div></div><div></div></div> | <div><div></div><div></div><div></div></div> |
| Hood | Main Frame Welds | Paint |
| <div><div></div><div></div><div></div></div> | <div><div></div><div></div><div></div></div> | <div><div></div><div></div><div></div></div> |
| Plastic (Exterior) | Radiator Grill | Rubber Bumpers |
| <div><div></div><div></div><div></div></div> | <div><div></div><div></div></div> <div>Has small dents and ripples</div> | <div><div></div><div></div><div></div></div> |

Sheet Metal



Right side storage box has dent in bottom section.



1

Steps / Ladder



Cleaning Required

YES

SAFETY ITEMS

Back Up Alarm



Horn



Safety Locks / Pins



Seat Belt / Date



SEPTEMBER 2023



1

Secondary Exit



Parking Brake Functioning

YES

ROPS

YES

ROPS Certification Plate

YES



1

Safety Decals In Place

YES

Safety Decals Legible

YES

Service Brakes Functioning

YES

OPERATOR STATION

Air Conditioner



108 ambient temp and 54 vent temp



1

Armrests



Cab Filter / Heat Vent Louvres



Dash Console



Door Latches / Hinges / Seals



Floor Boards / Mats



Gauges



Headliner



Heater / Defroster



108 ambient temp and 116 vent temp



1

Hour Meter - GAUGES,
OPERATION STATION, CONSOLE



Hydraulic Controls



Interior Lights



Interior Plastic / Fabric



Mirrors



Monitoring Display



| | | |
|----------------------------|-------------------------------------|--|
| Pans/Guards ●●● | Radio ●●● | Seat Cushions / Suspension / Type ●●● |
| Switches ●●● | Transmission Controls ●●● | Visor / Sunshade ●●● |
| Windows ●●● | Windshield Wipers ●●● | |
| Current O&MM YES | Current Safety Manual YES | |

ENGINE

| | | |
|---------------------------------------|---|---------------------------------|
| Belts / Pulleys - ENGINE ●●● | Engine Oil Level / Condition ●●● | Engine Supports / Mounts ●●● |
| Exhaust / Muffler / Stack ●●● | Fuel Injection System ●●● | Governor ●●● |
| Intake / Air Filters ●●● | Operating Condition - ENGINE ●●● | Turbocharger / Blower ●●● |
| Blow By NO | Emissions Decal Legible NO Cracked and peeling | 📷1 Fuel Leaks NO |
| Has Engine been rebuilt? NO | Knocking NO | Oil Leaks NO |
| Service Needed NO | Water in Oil NO | |
| Oil Pressure (H/L/N) Normal | Smoke Color (B/D/L/W) Normal | |

EMISSIONS

Aftertreatment Heat Shields /
Guards
●●●

DEF Lines / Wiring
●●●

Diesel Exhaust Fluid (DEF) Tank
●●●

Diesel Particulate Filter (DPF)
Condition / Service Hours
●●●

Aftertreatment System Codes
NO

Leaks / Type
NO

COOLING SYSTEM

Anti-Freeze Level / Color /
Condition
●●●

Belts / Pulleys - COOLING
SYSTEM
●●●

Coolers
●●●

Fan
●●●

Fan Drive / Type
●●●

Fan Shrouds / Guards
●●●

Hoses / Tubes
●●●

Radiator
●●●

Water Pump
●●●

Compression in Radiator
NO

Coolant Leaks
NO

Oil in Anti-Freeze
NO

Standard Radiator
YES

ELECTRICAL, STARTING AND CHARGING SYSTEM

Alternator
●●●

Batteries / Cables / Master
Disconnect
●●●

Electrical Battery Box
●●●

Jump Start Terminal
●●●

Starter
●●●

Wiring
●●●

Work Lights
●●●



4

| Active Codes NO | Ether Aid YES | Signal Lights YES |
|---|--------------------------------------|--|
| TRANSMISSION | | |
| Case ●●● | Controls ●●● | Lines / Fittings - TRANSMISSION ●●● |
| Operating Condition - TRANSMISSION ●●● | Pump ●●● | Ride Control ●●● |
| Seals ●●● | Temp / Pressure Gauges ●●● | Torque Converter / Condition ●●● |
| Transmission - Forward Shifts ●●● | Transmission - Reverse Shifts ●●● | |
| Leaks - TRANSMISSION NO | Powershift YES | Transmission - Noisy NO |
| STEERING | | |
| Front Axle - STEERING ●●● | Lines / Fittings - STEERING ●●● | Steering Column / Tilt ●●● |
| Steering Cylinder ●●● | Steering Linkage ●●● | Steering Operating Condition ●●● |
| Steering Pump ●●● | Tie Rods / Rod Ends ●●● | Wheel / Joystick ●●● |
| BRAKE | | |
| Parking Brake Operation ●●● | Service Brake Operation ●●● | |
| Leaks - BRAKE YES | | |
| HYDRAULICS | | |

| | | | |
|---|--|--|----|
| Accumulators ●●● | Backhoe Control Valve ●●● | Boom Cylinder ●●● Has grease residue | 📷1 |
| Bucket & Hoist Kickout ●●● | Bucket Cylinder ●●● | 📷1 Control Linkage ●●● | |
| Extended Stick Cylinder ●●● | Front Loader Auxiliary ●● Cap is cracked on left side front auxiliary fitting. | 📷1 Hose Lines ●● Has rips and cuts on hydraulic line on right side of boom | 📷4 |
| Lift Cylinders ●●● | 📷2 Loader Valve ●●● | Out Rigger Cylinder ●●● | |
| Overall Operating Condition - HYDRAULICS ●●● | Pumps ●●● | Rear Auxiliary Hydraulic ●●● | |
| Stick Cylinder ●●● grease residue present | 📷1 Swing Cylinder ●●● | 📷3 Tank / Sight Glass / Cap ●●● | |
| Tilt Cylinder ●●● | 📷1 | | |
| Leaks - HYDRAULICS NO | | | |

BOOM & STICK

| | | | |
|-------------------|-----------------------------|---|----|
| Boom ●●● | Boom Pins & Bushings ●●● | E Stick Condition ●● Needs adjusted | 📷1 |
| Outriggers ●●● | Stick ●●● | Stick Pins & Bushings ●●● | |
| Swing Lock ●●● | Swing Pivot ●●● | Thumb Type / Condition ●●● | |

●●●

| | | |
|---|------------------------|--------------|
| Loader Frame | Loader Pins & Bushings | Tilt Linkage |
| ●●● | ●●● | ●●● |
| Front Bucket Quick Coupler | 📷2 | |
| YES | | |
| Has cracked retainer, and bent bracket. | | |
| Front Bucket Notes | | |
| No bucket | | |

Notes - REAR BUCKET
No bucket

| | | |
|----------------------------|-------------------|--------------------|
| Differential Supports | Differentials | Drive Shaft |
| Four Wheel Drive Operation | Front Axle | Front Final Drives |
| Rear Axle | Rear Final Drives | Trunion |
| Universal Joints | Wheel Lugs & Rims | |
| Leaks | | |
| NO | | |

| Make / Serial# | Tread Depth in 1/32" | % Life Remaining | Recapped | Tread Cuts/Chunks | Side Cuts Section |
|----------------|-------------------------|---------------------|----------|----------------------|----------------------|
|----------------|-------------------------|---------------------|----------|----------------------|----------------------|

| | | | | | | |
|-------------|----------|----|----|----|-----|-----|
| Left Front | Michelin | 22 | 90 | NO | YES | YES |
| Left Rear | Michelin | 33 | 88 | NO | YES | YES |
| Right Front | Michelin | 22 | 90 | NO | YES | YES |
| Right Rear | Michelin | 33 | 88 | NO | YES | YES |

Spare
NO

Average Life Remaining - TIRES
89%

Front Tire Size
12.5/80-18

Rear Tire Size
19.5L24

COMMENTS, MISC. REPAIRS, GENERAL REMARKS

comment 1
Service not needed. NSD 769hrs



1

comment 2
Inspect

MARKETING PHOTOS (31)











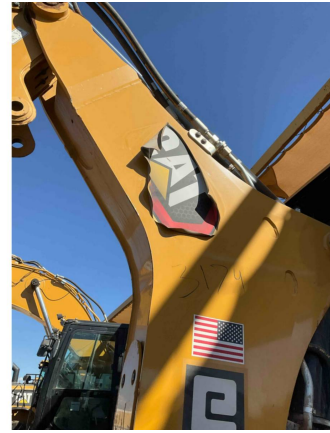


LINE ITEM PHOTOS (46)

Decals



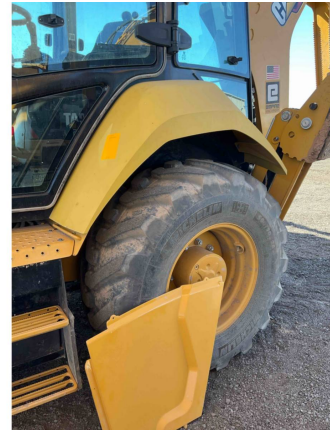
Peeling on right side of boom
and missing on hood (cover
under the service letter
PS55342) Warranty



Fenders



Discolored



Radiator Grill



Has small dents and rips



Sheet Metal



Right side storage box has dent in bottom section.



Seat Belt / Date



SEPTEMBER 2023



ROPS Certification Plate

YES



Air Conditioner



108 ambient temp and 54 vent
temp



Heater / Defroster



108 ambient temp and 116 vent
temp



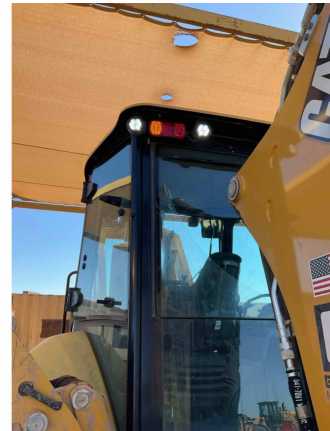
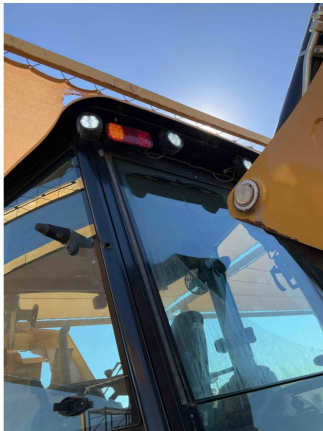
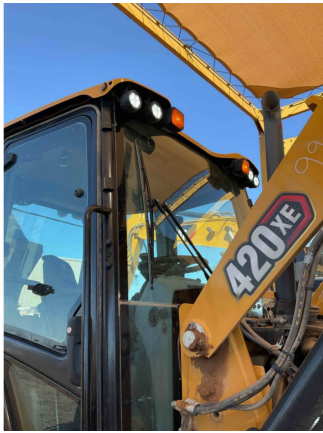
Emissions Decal Legible

NO

Cracked and peeling



Work Lights



Boom Cylinder



Has grease residue



Bucket Cylinder



Front Loader Auxiliary



Cap is cracked on left side front auxiliary fitting.



Hose Lines



Has rips and cuts on hydraulic line on right side of boom





Lift Cylinders



Stick Cylinder



grease residue present



Swing Cylinder



Tilt Cylinder



E Stick Condition



Needs adjusted





Front Bucket Quick Coupler

YES

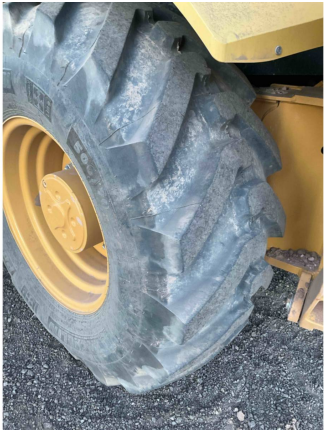
Has cracked retainer, and bent bracket.



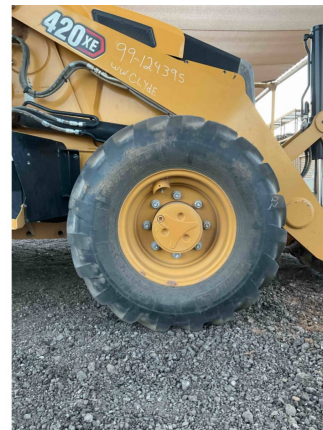
| | Make / Serial# | Tread Depth in 1/32" | % Life Remaining | Recapped | Tread Cuts/Chunks | Side Cuts Section |
|---|----------------|---|---------------------|-----------|----------------------|----------------------|
| Left Front | Michelin | 22 | 90 | NO | YES | YES |
|  | |  | | | | |



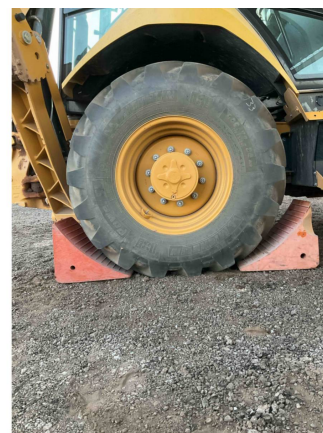
| | Make / Serial# | Tread Depth in 1/32" | % Life Remaining | Recapped | Tread Cuts/Chunks | Side Cuts Section |
|-----------|----------------|-------------------------|---------------------|----------|----------------------|----------------------|
| Left Rear | Michelin | 33 | 88 | NO | YES | YES |



| | Make / Serial# | Tread Depth in 1/32" | % Life Remaining | Recapped | Tread Cuts/Chunks | Side Cuts Section |
|-------------|----------------|-------------------------|---------------------|-----------|----------------------|----------------------|
| Right Front | Michelin | 22 | 90 | NO | YES | YES |



| | Make / Serial# | Tread Depth in 1/32" | % Life Remaining | Recapped | Tread Cuts/Chunks | Side Cuts Section |
|------------|----------------|-------------------------|---------------------|-----------|----------------------|----------------------|
| Right Rear | Michelin | 33 | 88 | NO | YES | YES |





comment 1

Service not needed. NSD 769hrs

EMPIRE CAT LUBE SERVICE RECORD

PM _____ COMPLETED ON(DATE) 8-8-25

BY(TECHNICIAN NAME) 709

THIS UNIT IS DUE FOR PM _____ AT 769 SMU HOURS

EMPIRE 405-510

BUILDING THE WEST

SINCE 1950

Safety. Respect. Integrity. Teamwork. Excellence.
Stewardship. Astonishment.

MODEL 470D
BLD 11A
PRODUCT DISSEMINATION *CAT884