



2020 CAT
299D3
COMPACT TRACK LOADER

INSPECTION DETAILS

Inspection Type	Marketing
Inspection Form	Standard
Inspection #	10155301
Inspection Status	Created
Created	10/09/24 16:51:00
Updated	10/09/24 17:16:49
Created By	Shaw, Grant J.
Inspector	Heath, Jason
Reviewers	Akutey, Solomon
Salesperson	Shaw, Grant J.
Serial #	DY902769
SMU / Hours	1,999
Location	SPARKS, NV 89431, United States



FEATURES

General

- 2 Speed Travel
- Auxiliary Hydraulics Flow - High Flow
- Heater / Defroster
- Radio - Bluetooth
- Air Conditioner
- Coupler Type - Electric
- Lighting
- ROPS - Enclosed
- Anti-theft System
- Hand and Foot Control
- Product Link

Regulatory

- Emissions Level - EPA - Tier4
- Emissions Level - Korea - Korea-Tier4 Final
- Regulatory Status - EPA Certified
- Ultra Low Sulfur Diesel Fuel

Attachments

- Bucket

CONDITION

●●● Good ●● Fair ● Poor

GENERAL CONDITION

Body ●●●	Frame ●●●	General ●●●
ET Product Status Report Download YES	Logged / Active Codes YES	Machine Starts and is Operable YES
S.O.S. (All Compartments) YES Eng, Hyd	Visible Oil Leaks YES	

GENERAL APPEARANCE




Cab or Canopy ●●●	Counterweight ●●●	Crankcase Guard / Battery Box ●●●
Decals ●●●	Eng. Enclose Hood / Stack ●●●	Fuel Tank ●●●
Grab Irons ●●●	Main Frame Welds ●●●	Paint ●●● Some scratched areas
Plastic ●●●	Radiator Grill & Shroud ●●●	📷1 Sheet Metal ●●●
Steps / Ladder ●● Step on bucket caved in	📷2	
Cleaning Required YES		

SAFETY ITEMS








Back Up Alarm ●●●	Camera(s) ●●●	Dead Engine Lowering Valve ●●●
Horn ●●●	ROPS ●●●	Safety Locks / Pins ●●●
Seat Belt / Date ●●●	Secondary Exit ●●●	
Parking Brake Functioning YES	ROPS Certification Plate YES	📷1 Safety Decals In Place YES
Safety Decals Legible YES		

OPERATOR STATION

Air Conditioner ●●●	Armrests ●●●	Cab Filter / Heat Vent Louvres ●●●
Dash Console ●●●	Door Latches / Hinges / Seals ●●●	Floor Boards / Mats ●●●
Gauges ●●●	Headliner ●●●	Heater / Defroster ●●●
Hour Meter - GAUGES, OPERATION STATION, CONSOLE ●●●	Hydraulic Controls ●●●	Interior Lights ●●●📷1
Interior Plastic / Fabric ●●●	Mirrors ●●●	Monitoring Display ●●●
Pans/Guards ●●●	Radio ●● Volume does not work	📷1 Seat Cushions / Suspension / Type ●●● Small tear on the back side
Switches ●●●	Windows ●●●	Windshield Wipers ●●●

Current O&MM NO	Current Parts Manual NO	Current Safety Manual NO
Diesel Exhaust Fluid (DEF) Level -  1 OPERATOR STATION Full	Fuel Level - OPERATOR STATION  1 Full	Notes - GAUGES, OPERATOR STATION, CONSOLE  2 Outside cab filter striker broken

ENGINE

Belts / Pulleys - ENGINE 	Engine Oil Level / Condition 	Engine Supports / Mounts 
Exhaust / Muffler / Stack 	Fuel Injection System 	Intake / Air Filters 
Operating Condition - ENGINE 	Turbocharger / Blower 	
Apparent Other Engine Damage NO	Blow By NO	Emissions Decal Legible YES
Fuel Leaks NO	Has Engine been rebuilt? NO	Knocking NO
Oil Leaks NO	Pre Lube System NO	Service Needed NO
Water in Oil NO		
Hours On Engine 1994	Notes - ENGINE Hose rubbing on air filter housing	 1 Oil Pressure (H/L/N) 29 psi at low rpm  1
Smoke Color (B/D/L/W) Normal		

EMISSIONS

Aftertreatment Heat Shields /
Guards
●●●

DEF Lines / Wiring
●●●

Diesel Exhaust Fluid (DEF) Tank
●●●

Diesel Particulate Filter (DPF)
Condition / Service Hours
●●●

Aftertreatment System Codes
NO

Leaks / Type
NO

COOLING SYSTEM

Anti-Freeze Level / Color /
Condition
●●●
Red



Belts / Pulleys - COOLING
SYSTEM
●●●

Coolers
●●●

Fan
●●●

Fan Drive / Type
●●●
Hydraulic

Fan Shrouds / Guards
●●●

Hoses / Tubes
●●●

Radiator
●●●



Water Pump
●●●

Compression in Radiator
NO

Coolant Leaks
NO

Oil in Anti-Freeze
NO

Standard Radiator
YES

ELECTRICAL, STARTING AND CHARGING SYSTEM

Alternator
●●●

Batteries / Cables / Master
Disconnect
●●●



Lighting
●●●

Starter
●●●

Wiring
●●●

TANDEMS/GEARS/BEARINGS/CHAINS

Front Torsion Bars ●●●	Operating Condition ●●●	Rear Torsion Bars ●●●
Torsion Axles ●●●	Travel Controls ●●●	Travel Motors ●●●
Travel Pumps ●●●		
Magnetic Plugs Removed & Checked? NO		

HYDRAULICS

Hoses / Lines ●●●	Lift Cylinders ●●●	Overall Operating Condition - HYDRAULICS ●●●
Pump & Valves ●●●	Tank ●●●	Tilt Cylinder ●●●
Leaks - HYDRAULICS NO		

BUCKET

Bucket Bottom ●●●	📷2	Bucket Linkage ●●●	Bucket Sides ●●●	📷2
Cutting Edges ●● Folding on left edge	📷3	Loader Frame ●●●	Loader Pins & Bushings ●●●	
Quick Coupler ●●●				
Bucket Capacity 0.62 YD3	📷1	Notes - BUCKET A4208BK20490		📷1

UNDERCARRIAGE

	Measurement (L)	% Worn (L)	Total Potential Hours (L)	Measurement (R)	% Worn (R)	Total Potential Hours (R)
Tread Depth	23/32	29	1,997	24/32	15	1,997
Idlers ●●●	📷4	Roller ●●●		📷2	Roller Frame ●●●	📷2
Sprocket ●●●	📷2	Track / Belt Condition ●●●		📷2		
Percentage Worn 22%		Track / Belt Width 450MM		📷3		

COMMENTS, MISC. REPAIRS, GENERAL REMARKS

comment 1
Inspected on 10/9/24 @ 1999
hours

MARKETING PHOTOS (8)





THIS ENGINE MEETS 2020 Tier4 EMISSION REGULATIONS
FOR U.S. EPA AND CALIFORNIA NONROAD CI ENGINES

CAT

CATERPILLAR INC.

MODEL : C13.8-CP-TT-EV12 ENGINE DISP. : 3.8 L

FAMILY : LKBXL03.8AMD

POWER : 72.1kW/2400rpm CATEGORY:55-130kW

VALVE CLEARANCE (COLD) : IN: 0.25mm EX: 0.25mm

ECS: EM, DFI, TC, EGR, CAC, EOM, PTOX

DOC, SCR, AIOX

ULTRA LOW SULFUR FUEL ONLY

2020/06

MODEL ASSY: 1H081-1

LINE ITEM PHOTOS (39)

Radiator Grill & Shroud



Steps / Ladder



Step on bucket caved in



ROPS Certification Plate
YES



Interior Lights



Radio

Volume does not work



Diesel Exhaust Fluid (DEF) Level - OPERATOR STATION

Full



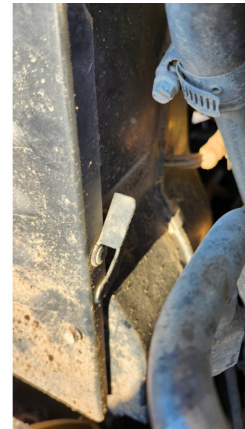
Fuel Level - OPERATOR STATION

Full



Notes - GAUGES, OPERATOR STATION, CONSOLE

Outside cab filter striker broken



Anti-Freeze Level / Color / Condition

●●●●

Red



Radiator



Batteries / Cables / Master Disconnect



Notes - ENGINE

Hose rubbing on air filter housing

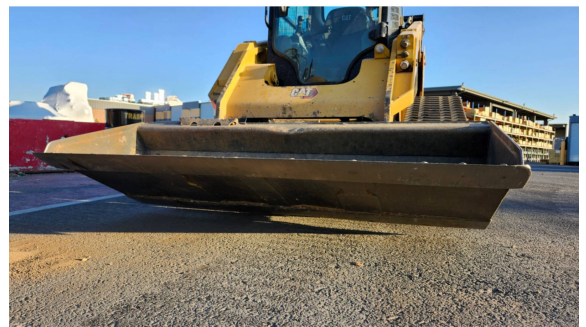
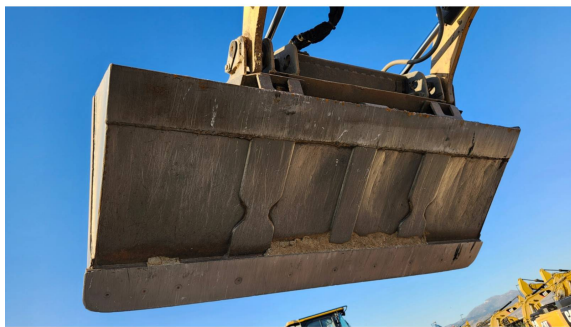


Oil Pressure (H/L/N)

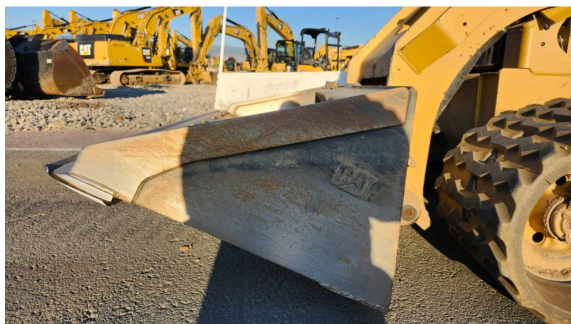
29 psi at low rpm

Engine	Description	Value	Unit	Min	Max	ECM
Engine Speed		1075	rpm	1075	1079	C3.8 73kW (2LG1160)
Throttle Position		0	%	0	0	C3.8 73kW (2LG1160)
Engine Coolant Temperature		172	Deg F	172	172	C3.8 73kW (2LG1160)
Engine Intake Manifold #1 Temperature		90	Deg F	90	90	C3.8 73kW (2LG1160)
Ambient Air Temperature		76.1	Deg F	76.1	76.3	C3.8 73kW (2LG1160)
Engine Oil Pressure		29	psi	29	29	C3.8 73kW (2LG1160)
Boost Pressure		13	psi	13	13	C3.8 73kW (2LG1160)
Barometric Pressure		12.6	psi	12.6	12.6	C3.8 73kW (2LG1160)
EGR Valve Control Command		14	%	14	14	C3.8 73kW (2LG1160)
EGR Valve Position		16	%	13	16	C3.8 73kW (2LG1160)
Battery Voltage		14.4	Volts	14.3	14.5	C3.8 73kW (2LG1160)

Bucket Bottom



Bucket Sides



Cutting Edges



Folding on left edge



Bucket Capacity

0.62 YD3



Notes - BUCKET

A4208BK20490



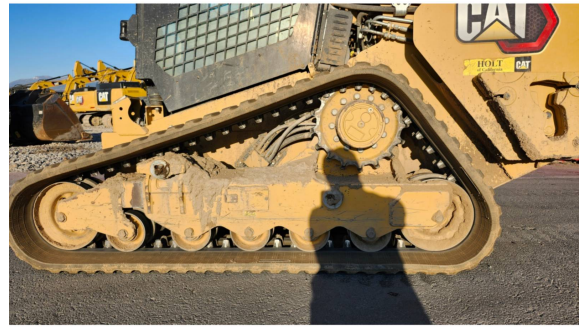
Idlers



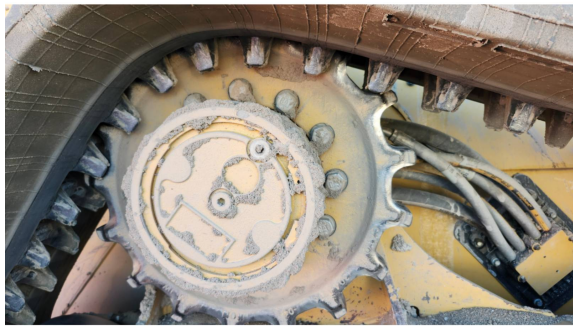
Roller



Roller Frame



Sprocket



Track / Belt Condition



Track / Belt Width

450MM

