



2024 CAT
140-15AWT2
MOTOR GRADERS

INSPECTION DETAILS

Inspection Type	Purchase
Inspection Form	MOTOR GRADER
Inspection #	10238641
Inspection Status	Inspected
Created	10/08/25 15:25:27
Updated	10/17/25 15:56:22
Created By	Fuller, Scott U.
Inspector	Fuller, Scott U.
Reviewers	Fuller, Scott U.
Salesperson	Heath, Jason
Transmission Serial #	SS608201
Engine Serial #	SYE48052
Last Preventative Maintenance	Aug 25, 2025
Stock #	E601161
Serial #	EB301262
SMU / Hours	556
Location	Henderson, NV, United States



FEATURES

General

- Accumulators-Blade Lift
- Auto Articulation Full
- Differential Lock
- Lighting
- Product Link
- Rear View Camera
- Steering Type - Joystick
- Tire Size
17.5R25
- Air Conditioner
- Circle Clutch
- Drive - All Wheel
- Mirrors
- Pushblock
- Ripper - Multi-Shank
- Supplemental Steering
- Air Suspension Seat
- Defroster Fan
- Guard, Transmission
- Moldboard Size - 14'
- Radio - Bluetooth
- ROPS - Enclosed
- Throttle Lock

Regulatory

- Emissions Level - EPA - EPA TIER 4f
- Ultra Low Sulfur Diesel Fuel

Technology

- Accugrade Ready

Attachments

- Scarifier

CONDITION



Good



Fair



Poor

Approved Repair

GENERAL APPEARANCE

Battery Compartment



Cab or Canopy



Engine Enclosures



Fiberglass



Frames



Fuel Tank



Missing fuel fill screen.

Grab Irons



Guarding Panels



Hood



Paint & Decals



Various minor scrapes

Plastic Covers



Push Plate



Radiator Grill



Sheet Metal



Steps / Ladder



Cleaning Required

YES

Machine needs washed and detailed.

S.O.S. Taken

NO

Samples previously obtained at 457 hrs (Aug 2025)

Service Required?

NO

Most recent service performed 8/25/2025 at 457 hours (PM2)



SAFETY ITEMS

Alternate Exit



Back Up Alarm



Horn



Rear View Mirrors



Rear View Camera



Reflectors / Reflective Labels



Seat-Belt



Installed July, 2024



Warning / Safety Labels



ROPS

YES

ROPS Certification Label

YES

OPERATOR STATION

<div>Air Conditioning</div> <div><div><div></div><div></div><div></div></div></div> <div>Cooled to 43 degrees at 75 ambient temp</div>	<div><div><div></div><div></div><div></div></div>1</div> <div>Alert Indicators / Alarms</div> <div><div><div></div><div></div><div></div></div></div>	<div>Cab Circulating Fans</div> <div><div><div></div><div></div><div></div></div></div>
<div>Cab Floor</div> <div><div><div></div><div></div><div></div></div></div>	<div>Cab Interior Trim</div> <div><div><div></div><div></div><div></div></div></div>	<div>Cab Storage Compartments</div> <div><div><div></div><div></div><div></div></div></div>
<div>Consoles</div> <div><div><div></div><div></div><div></div></div></div>	<div>Control-Service Brake</div> <div><div><div></div><div></div><div></div></div></div>	<div>Controls-Throttle</div> <div><div><div></div><div></div><div></div></div></div>
<div>Controls-Travel</div> <div><div><div></div><div></div><div></div></div></div>	<div>Controls-Travel & Steering</div> <div><div><div></div><div></div><div></div></div></div>	<div>Dash Console</div> <div><div><div></div><div></div><div></div></div></div>
<div>Doors / Latches</div> <div><div><div></div><div></div><div></div></div></div>	<div>Films / Labels</div> <div><div><div></div><div></div><div></div></div></div>	<div>Floor Boards / Mats</div> <div><div><div></div><div></div><div></div></div></div>
<div>Gauges</div> <div><div><div></div><div></div><div></div></div></div>	<div>Glass/Mirrors</div> <div><div><div></div><div></div><div></div></div></div>	<div>Headliner / Trim</div> <div><div><div></div><div></div><div></div></div></div>
<div>Heater</div> <div><div><div></div><div></div><div></div></div></div>	<div>Hour Meter</div> <div><div><div></div><div></div><div></div></div></div>	<div>HVAC System</div> <div><div><div></div><div></div><div></div></div></div>
<div>Instrument Panel</div> <div><div><div></div><div></div><div></div></div></div>	<div>Interior Lights</div> <div><div><div></div><div></div><div></div></div></div>	<div>Joystick Console</div> <div><div><div></div><div></div><div></div></div></div>
<div>Monitor / Warning Alarm</div> <div><div><div></div><div></div><div></div></div></div>	<div>Monitoring Panel / Display</div> <div><div><div></div><div></div><div></div></div></div>	<div>Radio Type & Condition</div> <div><div><div></div><div></div><div></div></div></div> <div>AM/FM/BT radio</div>
<div>Seat / Suspension / Arm Rests</div> <div><div><div></div><div></div><div></div></div></div>	<div>Switches</div> <div><div><div></div><div></div><div></div></div></div>	<div>Windshield Wipers</div> <div><div><div></div><div></div><div></div></div></div>
<div>Cleaning Required?</div> <div>YES</div> <div>Need detailed.</div>	<div>Current O&MM</div> <div>YES</div>	<div>Current Parts Manual</div> <div>NO</div>
<div>Current Safety Manual</div> <div>YES</div>		

ENGINE

Air Cleaners ●●●	Anti-Freeze Color / Level ●●●	Engine Block / Cylinder Head ●●●
Engine Operating Condition ●●●	Engine Pre-Cleaner ●●●	Engine Supports ●●●
Exhaust / Muffler / Stack ●●●	Fuel Injection System ●●●	Fuel Lines & Filters ●●●
Governor / Control ●●●	Turbocharger / Blower ●●●	
Blow By NO	Compression in Radiator NO	Emission Label YES
Engine Oil Leaks NO	Fluid Levels OK? YES	Knocking NO
Oil Leaks NO	Water in Oil NO	
Oil Pressure (H/L/N) Normal	Smoke Color (B/D/L/W) Normal	

EMISSIONS

After Treatment System ●●●	DPF Condition / Hours Changed ●●●	
Leaks / Type NO		

COOLING SYSTEM

Coolers ●●●	Engine Cooling Tubes & Hoses ●●●	Fan ●●●
Fan Drive / Type ●●●	Radiator ●●●	Shroud / Guards ●●●

Water Pump
●●●

Cooling System Leaks
NO

ELECTRICAL, STARTING AND CHARGING SYSTEM

Alternator
●●●

Batteries / Cables
●●●

Starter
●●●

Wiring
●●●

Work Lights
●●●

ECM download
YES
Has multiple active and logged
fault codes.

📷2

Ether Aid
YES
No bottle

📷1 Jump Start Terminal
YES 📷1

Signal Lights
YES

TRANSMISSION

Case-Transmission
●●●

Controls-Transmission
●●●

Cooler
●●●

Differential Lock Control
●●●

Drive Shafts
●●●

Transmission Oil Lines & Tubes
●●●

Transmission Operating
Condition
●●●

Transmission Pump
●●●

Valves
●●●

Transmission - Noisy
NO

Transmission Oil Leaks
NO

STEERING

Articulation Hitch Pins & Bushings
●●●

Controls-Steering
●●●

King Pins
●●●

Steering Cylinder
●●●

Steering Cylinder Pins & Bushings
●●●

Steering Linkage
●●●

Steering Oil Lines & Tubes
●●●

Steering Operating Condition
●●●

Steering Valve
●●●

Supplemental Steering
●●●

Tie Rods / Rod Ends
●●●

Wheel Lean Cylinder - STEERING
●●●

Articulation Frame Lock
YES

BRAKE

Accumulators
●●●

Brakes Oil Lines & Tubes
●●●

Control Valve
●●●

Parking Brake Operation
●●●

Pedal
●●●

Service Brake Operation
●●●

Brake System Leaks
NO

DRIVECHAIN / TANDEMS

Final Drive Housings
●●●

Tandem Drive Operating Condition
●●●

Tandem Housings
●●●

Tandem Stops
●●●

Axles, Differentials, Finals-Leaks
NO

HYDRAULICS

Articulation Cylinders
●●●

Blade Cushion
●●●

Circle Drive Box
●●●

Circle Side Shift Cylinder
●●●

Controls-Hydraulic
●●●

Cylinder Mounts / Pins
●●●

Hydraulic Oil Lines & Tubes
●●●

Hydraulic Operating Condition
●●●

Hydraulic Pump
●●●

Hydraulic Valves
●●●

Lift Cylinders
●●●

Linkage
●●●

Pump Drive Shaft
●●●

Ripper Cylinder
●●●

Saddle Pin / Actuator
●●●

Side Shift Cylinder
●●●

Tank Hydraulic
●●●

Tip Cylinder
●●●

Hydraulic System Leaks
NO

BLADE

Blade Mounts / Pins
●●●

Circle Drawbar
●●●

Circle Frame
●●●

Circle Shoes / Inserts
●●●

Cutting Edge
●●●
Some visible wear to bottom corners
of end bit overlays.



Face / Moldboard
●●●

Frog / Base Edge
●●●

Ring Gear
●●●

Saddle
●●●

RIPPER

Beam
●●●

Brackets / Studs
●●●

Ripper Frame
●●●

Ripppe Frame Pins & Bushings
●●●

Shanks / Ripper (GET)
●●●

SCARIFER

Beam / Frame - SCARIFER
●●●

Brackets / Studs - SCARIFER
●●●

Lines / Fittings - SCARIFER
●●●

Pins & Bushings - SCARIFER
●●●

Shanks / GET - SCARIFER
●●●

ALL WHEEL DRIVE

All Wheel Drive Lines / Fittings
●●●

All Wheel Drive Operating
Condition
●●●

All Wheel Drive Valve
●●●

Controls / Settings
●●●

Drive Motors
●●●

Pump
●●●

TIRES

	Make / Serial#	Tread Depth in 1/32"	% Life Remaining	Recapped	Tread Cuts/Chunks	Side Cuts Section
Left Front	Bridgestone VKT	25	73	NO	YES	NO
Left Rear	Bridgestone VKT	26	76	NO	YES	NO
Left Rear Center	Bridgestone VKT	26	76	NO	YES	NO
Right Front	Bridgestone VKT	25	73	NO	YES	NO
Right Rear	Bridgestone VKT	26	76	NO	YES	NO
Right Rear Center	Bridgestone VKT	26	76	NO	YES	NO

Rims / Wheels Condition
●●●

Tire Size - TIRES
17.5-R25

COMMENTS, MISC. REPAIRS, GENERAL REMARKS

comment 1

Inspected 10/8/2025 at 556 hours



52

MARKETING PHOTOS (20)









LINE ITEM PHOTOS (68)

Fuel Tank



Missing fuel fill screen.



Service Required?

NO

Most recent service performed
8/25/2025 at 457 hours (PM2)



Seat-Belt



Installed July, 2024



Air Conditioning



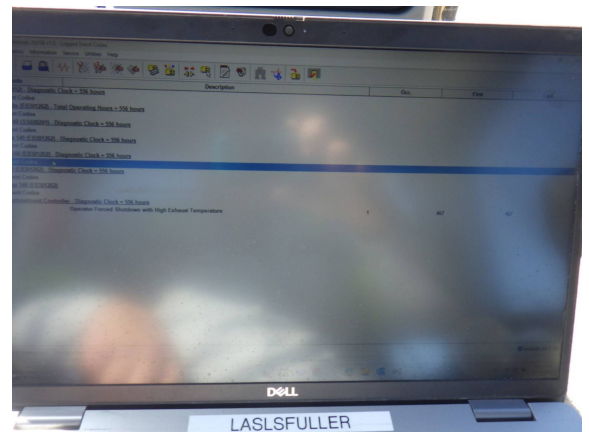
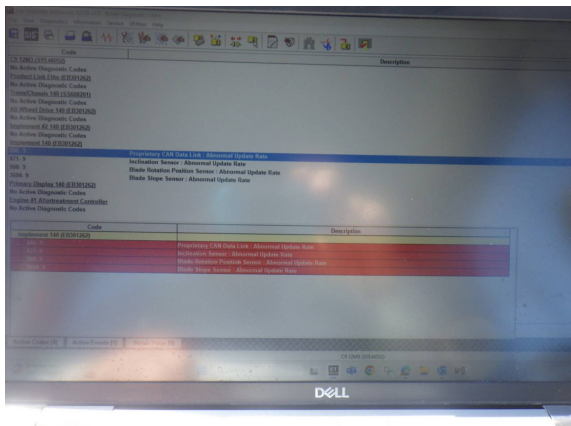
Cooled to 43 degrees at 75
ambient temp



ECM download

YES

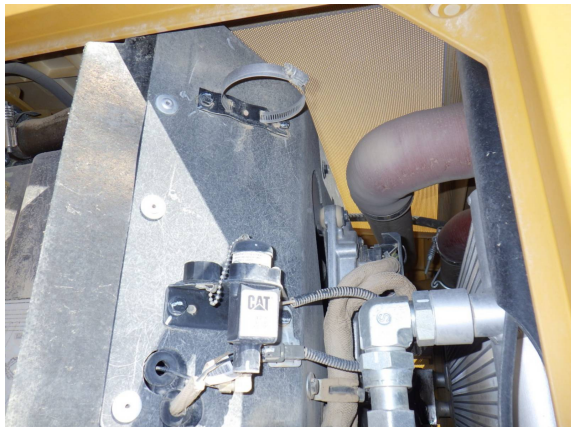
Has multiple active and logged
fault codes.



Ether Aid

YES

No bottle



Jump Start Terminal
YES



Cutting Edge



Some visible wear to bottom corners of end bit overlays.



	Make / Serial#	Tread Depth in 1/32"	% Life Remaining	Recapped	Tread Cuts/Chunks	Side Cuts Section
Left Front	Bridgestone VKT	25	73	NO	YES	NO



	Make / Serial#	Tread Depth in 1/32"	% Life Remaining	Recapped	Tread Cuts/Chunks	Side Cuts Section
Left Rear	Bridgestone VKT	26	76	NO	YES	NO



	Make / Serial#	Tread Depth in 1/32"	% Life Remaining	Recapped	Tread Cuts/Chunks	Side Cuts Section
Left Rear Center	Bridgestone VKT	26	76	NO	YES	NO



	Make / Serial#	Tread Depth in 1/32"	% Life Remaining	Recapped	Tread Cuts/Chunks	Side Cuts Section
Right Front	Bridgestone VKT	25	73	NO	YES	NO



	Make / Serial#	Tread Depth in 1/32"	% Life Remaining	Recapped	Tread Cuts/Chunks	Side Cuts Section
Right Rear	Bridgestone VKT	26	76	NO	YES	NO



	Make / Serial#	Tread Depth in 1/32"	% Life Remaining	Recapped	Tread Cuts/Chunks	Side Cuts Section
Right Rear Center	Bridgestone VKT	26	76	NO	YES	NO



comment 1

Inspected 10/8/2025 at 556
hours

