



2014 CAT
988K
WHEEL LOADER

INSPECTION DETAILS

Inspection Type	Marketing
Inspection Form	Wheel Loaders
Inspection #	10171219
Inspection Status	Created
Created	12/19/24 17:15:52
Updated	12/19/24 17:53:05
Created By	Shaw, Grant J.
Inspector	Heath, Jason
Salesperson	Heath, Jason
Serial #	TWX00226
SMU / Hours	17,636
Location	ELKO, NV, United States



FEATURES

General

- Air Conditioner
- Beacon
- Differential Type - Limited
- Lift - High
- Product Link
- Steering Type - Joystick
- Auto Lube
- Boom, GP
- Engine Enclosures
- Lighting
- Radio - AM FM CD Radio
- Auto Shift
- Counterweight
- Fire Extinguisher
- Mirrors
- ROPS - Enclosed

Regulatory

- Emissions Level - EPA - EPA TIER 4i
- Regulatory Status - NR_EPA / CARB/ EU / R120
- Ultra Low Sulfur Diesel Fuel

Attachments

- Bucket

CONDITION

Good

Fair

Poor

GENERAL APPEARANCE

Battery Compartment	Bottom Guards	Cab / Canopy
Counterweight	Engine Enclosure Panels	Fenders
Front Frame	Fuel Tank	Grab Handles / Handrails
Guards / Screens	Hood Panels	Mud / Splash Guards
Paint & Decals	Plastic Covers	Platforms
Radiator Enclosure / Grill	Rear Frame	Sheet Metal Panels
Steps / Ladder	Storage Compartments	
Cleaning Required YES	S.O.S. Taken YES Eng, TXM, Hyd	Service Required? NO PM @ 17634 hrs on 10/24
Notes - GENERAL APPEARANCE Runs great and looks good.		

SAFETY ITEMS

Alternate Exit	Back-Up Alarm	Horn
----------------	---------------	------

Implement Safety Lockout ●●●		Rear View Mirrors ●●●		Reflectors / Reflective Labels ●●●	
ROPS ●●●		Seat-Belt ●●● Installed 11/23		Ⓜ2 Warning / Safety Labels ●●●	
ROPS Certification Label YES	Ⓜ1				
OPERATOR STATION					
Air Conditioner ●●●		Cab Floor ●●●		Cab Interior Trim ●●●	
Cab Storage Compartments ●●●		Consoles ●●●		Dash Console ●●●	
Doors / Latches ●●●		Floor Boards ●●●		Gauges / Instrument Panel ●●●	
Glass & Windows ●●●		Heater ●●●		Hour Meter ●●●	
Interior Lights ●●●		Monitor / Warning Alarm ●●●		Product Link ●●●	
Seat / Suspension / Arm Rests ●●●		Switches ●●●		Windshield Wipers ●●●	
Cameras YES	Ⓜ1	ECM Downloaded YES		O&M Manual YES	Ⓜ1
Radio YES		Safety Manual YES			
ENGINE					
Air Cleaners ●●●	Ⓜ1	Belts & Pulleys ●●●		Engine Air Inlet ●●●	

Engine Block / Cylinder Head ●●●	Engine Exhaust ●●●	Engine Front / Rear Housings ●●●
Engine Operating Condition ●●●	Engine Pre-Cleaner ●●●	Engine Supports ●●●
Exhaust / Muffler ●●●	Fuel Lines & Filters ●●●	Turbocharger ●●●
Emission Label YES	📷1 Engine Blow-By? NO	Engine Noises? NO
Engine Oil Leaks NO	Fluid Levels OK? YES	Fuel Leaks NO
Water In Engine Oil? NO		
Antifreeze Color? Red	📷1 Diesel Exhaust Fluid (DEF) Level - 📷1 ENGINE 90% full	Notes - ENGINE Stack removed for transportation
Oil Pressure (H/L/N) Normal	Smoke (B/D/L/W) Normal	

COOLING SYSTEM

Coolers ●●●	Engine Cooling Tubes & Hoses ●●●	Fan ●●●
Fan Drive ●●●	Radiator ●●●	Radiator Shroud / Fan Guard ●●●
Water Pump ●●●		
Compression In Radiator? NO	Cooling System Leaks NO	Oil in Anti-Freeze NO

ELECTRICAL, STARTING AND CHARGING SYSTEM

Alternator
●●●

Battery & Wiring
●●●

Beacon
●●● 1

Lighting
●●●

Starter
●●●

Wiring
●●●

Ether Starting Aid
YES
No Ether Cylinder

TRANSMISSION

Case-Transfer
●●●

Case-Transmission
●●●

Controls-Transmission
●●●

Cooler
●●●

Torque Converter
●●●

Transmission Oil Lines & Tubes
●●●

Transmission Operating
Condition
●●●

Transmission - Noisy
NO

Transmission Oil Leaks
NO

STEERING

Articulation Hitch Pins &
Bushings
●●●

Articulation Lock Linkage
●●●

Articulation Stops
●●●

Controls-Steering
●●●

Hand Metering Unit
●●●

Steering Operating Condition
●●●

Steering Cylinder
●●●

Steering Cylinder Pins &
Bushings
●●●

Steering Oil Lines & Tubes
●●●

Steering Valves / Pumps
●●●

BRAKE			
Brake Accumulators		Brake Control Valve	
●●●		●●●	
Brakes Oil Lines & Tubes		Brakes Operating Condition	
●●●		●●●	
Pedal			
●●●			
Brake System Leaks			
NO			
Holding What Gear?	📷1		
2nd gear @ 1600 RPM			

HYDRAULICS			
Bucket & Hoist Kickout		Controls-Hydraulic	
●●●		●●●	
Hydraulic Oil Lines & Tubes		Hydraulic Operating Condition	
●●●		●●●	
Pumps & Valves		Tank Hydraulic	
●●●		●●●	
Hydraulic System Leaks			
NO			

BUCKET			
Bucket Bottom	📷3	Bucket Floor	📷1
●●●		●●●	Bucket Pins & Bushings
			●●●
Bucket Sides	📷4	Bucket Spill Guard	📷3
●●●		●●	Cutting Edges
		Few minor dents	●●●
			📷2

Loader Frame
●●●

📷2 Loader Pins & Bushings
●●●

Segments
●●
Normal wear

Teeth / Adapters
●●●

Tilt Linkages
●●●

Tilt Linkages Pins & Bushings
●●●

High Lift
YES

Bucket S/N - BUCKET
T1A08518

📷1 Bucket Size
10.0 YD3

Notes - BUCKET
Bucket tag worn out, hard to
read info. 📷1

ATTACHMENTS / WORK TOOLS

Lift Boom
YES

FINAL DRIVES

Differential / Axle Mounts
●●●

Differentials
●●●

Drive Shafts
●●●

Front Axle
●●●

Front Final Drives
●●●

Oscillation
●●●

Rear Axle
●●●

Rear Final Drives
●●●

Trunion
●●●

Axles, Differentials, Finals-Leaks
NO

TIRES

	Make / Serial#	Tread Depth in 1/32"	% Life Remaining	Recapped	Tread Cuts/Chunks	Side Cuts Section
Left Front	YOKOHAMA Y- 524	88	72	NO	YES	YES

Left Rear	YOKOHAMA Y-524	95	78	NO	YES	YES
Right Front	YOKOHAMA Y-524	88	72	NO	YES	YES
Right Rear	YOKOHAMA Y-524	94	77	NO	YES	YES

Rims / Wheels Condition



Tire Size - TIRES
35/65R33

COMMENTS, MISC. REPAIRS, GENERAL REMARKS

Date of Machine Inspection
Inspected on 12/19/24 @ 17636
hours

MARKETING PHOTOS (30)









LINE ITEM PHOTOS (30)

Service Required?

NO

PM @ 17634 hrs on 10/24



Seat-Belt

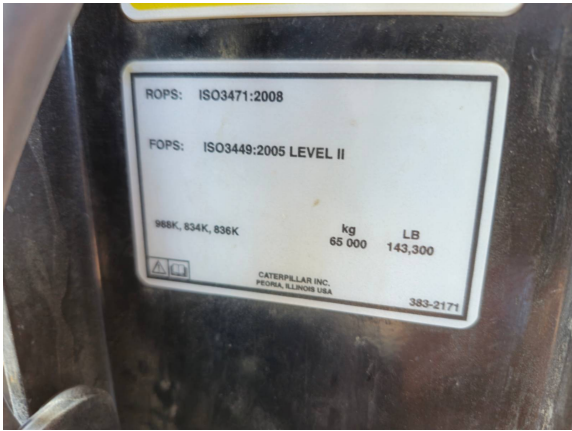
●●●

Installed 11/23



ROPS Certification Label

YES



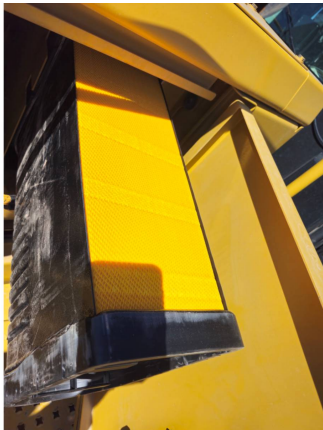
Cameras
YES



O&M Manual
YES



Air Cleaners
●●●



Emission Label

YES



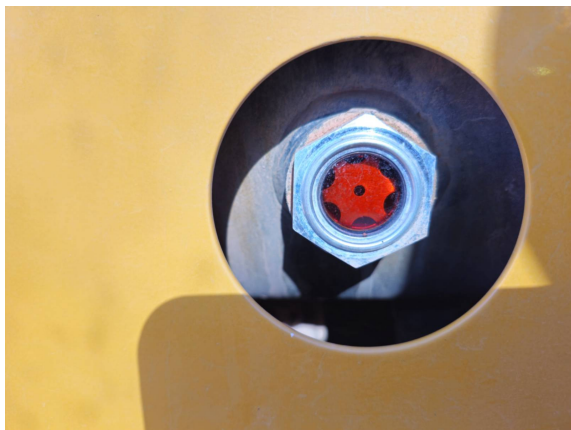
Beacon

●●●



Antifreeze Color?

Red



Diesel Exhaust Fluid (DEF) Level - ENGINE

90% full



Holding What Gear?

2nd gear @ 1600 RPM



Bucket Bottom





Bucket Floor



Bucket Sides





Bucket Spill Guard



Few minor dents



Cutting Edges



Loader Frame



Bucket S/N - BUCKET

T1A08518



Notes - BUCKET

Bucket tag worn out, hard to read info.

