



2019 CAT
73004
ARTICULATED TRUCKS

INSPECTION DETAILS

Inspection Type	Trade
Inspection Form	Standard
Inspection #	10255820
Inspection Status	Completed
Created	12/05/25 14:46:31
Updated	12/11/25 08:05:11
Created By	Calderas, Marco
Inspector	Calderas, Marco
Reviewers	Calderas, Marco
Salesperson	Schultis, Derrick R.
Serial #	3T300505
SMU / Hours	4,942
Location	Eloy, AZ, United States



FEATURES

General

- Air Conditioner
- Canopy
- Mirrors
- Rear View Camera
- Air Suspension Seat
- Lighting
- Product Link
- ROPS - Enclosed
- Auto Lube
- Lube Truck
- Radio - AM FM Radio
- Water Truck

Regulatory

- Emissions Level - EPA - EPA TIER 4f
- Ultra Low Sulfur Diesel Fuel

CONDITION



Good



Fair



Poor

Approved Repair

GENERAL CONDITION

Body



Frame



General



ET Product Status Report
Download
YES

Logged / Active Codes
YES



Machine Starts and is Operable
YES

S.O.S. (All Compartments)
YES
Engine, hydraulics and
transmission.

Tires are Aired Up and Drivable
YES

Visible Oil Leaks
NO

GENERAL APPEARANCE

Battery Box



Bumper



Cab or Canopy



Crankcase Guard / Transmission
Guard

Decals

Fenders



Right side fender has cracks And
guard-muds on left and right are cut.

Front Frame Welds

Fuel Tank



Fuel level sensor bad. (fuel tank at
100%)

Grab Irons



Hood / Actuator



HOOD & DOOR GP -HOOD Left side
hood panel is bent

Paint



Plastic (Exterior)



PANEL GP-CAB right side panel
cracked

Radiator Grill



Rear Frame Welds



Sheet Metal



Steps / Ladder
●●●

WALKWAY GP
●●●
WALKWAY GP Left side walk way platform has rust.



1

Cleaning Required
YES

SAFETY ITEMS

Back Up Alarm
●●●

Camera(s)
●●●



1

Horn
●●●

Safety Locks / Pins
●●●

Seat Belt / Date Driver
●
Out dated 02/19 driver seat belt



1

Seat Belt / Date Passenger
●
Outdated 02/19 passenger seat belt



1

Parking Brake Functioning
YES

ROPS
YES

ROPS Certification Plate
YES

Safety Decals In Place
YES

Safety Decals Legible
YES



1

Service Brakes Functioning
YES

Notes - SAFETY ITEMS
Machine has a GARMIN GPS ready.

OPERATOR STATION

Air Conditioner
●●●



1

Armrests
●
Driver seat arm rest both left and right are broken



2

Cab Filter / Heat Vent Louvres
●●●

Dash Console
●●●

Door Latches / Hinges / Seals
●●●

Floor Boards / Mats
●●●

Gauges
●●●

Glass
●●●

Headliner
●●●

Heater / Defroster



Hour Meter - GAUGES,
OPERATION STATION, CONSOLE



Interior Lights



Interior Plastic / Fabric



Mirrors



Monitoring Display



Pans/Guards



Radio



Seat Cushions / Suspension /
Type



Seat recliner does not work Driver seat
arm rest both left and right are
broken (i ttested the seat recliner and
is working perfectly fine)

Switches



Transmission Controls



Visor / Sunshade



Windows



Windshield Wipers



Sprayers do not work (wiper nuzzle
sprayer is plugged

Current O&MM

NO

Current Parts Manual

NO

Current Safety Manual

NO

ENGINE

Belts / Pulleys - ENGINE



Serpentine belt has cracks



Engine Oil Level / Condition



Engine Supports / Mounts



Exhaust / Muffler / Stack



Fuel Injection System



Governor



Intake / Air Filters



Part of service



Operating Condition - ENGINE



Turbocharger / Blower



Blow By

NO

Emissions Decal Legible

YES

Fuel Leaks

NO

Knocking
NO

Oil Leaks
NO

Pre Lube System
YES
Auto lube lines are disconnected
and grease valve is rusty along
with all fittings and lines

Service Needed
YES

Water in Oil
NO

Oil Pressure (H/L/N)
Normal

Smoke Color (B/D/L/W)
Normal

EMISSIONS

Aftertreatment Heat Shields /
Guards
●●●

Diesel Exhaust Fluid (DEF) Tank
●●●

Diesel Particulate Filter (DPF)
Condition / Service Hours
●●●

Aftertreatment System Codes
YES

Leaks / Type
NO

COOLING SYSTEM

Anti-Freeze Level / Color /
Condition
●●●●
Red

Coolers
●●●

Fan
●●●

Fan Drive / Type
●●●

Fan Shrouds / Guards
●●●

GUARD GP-RADIATOR -RH
●●
GUARD GP-RADIATOR -RH Is broken
on 2 Different parts and right side grill
is bent. (Its been repair before)

Hoses & Tubes
●●●

Radiator
●●●

Water Pump
●●●

Compression in Radiator
NO

Coolant Leaks
NO

Oil in Anti-Freeze
NO

Standard Radiator
YES

ELECTRICAL, STARTING AND CHARGING SYSTEM

Alternator ●●●	Batteries / Cables / Master Disconnect ●●●	Starter ●●●
Wiring ●●●	Work Lights ●●●	
Active Codes NO	Block Heater NO	Ether Aid NO
Jump Start Terminal YES	📷1 Signal Lights YES	

TRANSMISSION

Case ●●●	Controls ●●●	Cooler ●●●
Lines / Fittings - TRANSMISSION ●●●	Overall Operating Condition - TRANSMISSION ●●●	Pump - TRANSMISSION ●●●
Retarder ●●●	Temp / Pressure Gauges ●●●	Torque Converter ●●●
Transmission - Forward Shifts ●●●	Transmission - Reverse Shifts ●●●	Valves ●●●
Auto Shift YES	Leaks - TRANSMISSION NO	Transmission - Noisy NO

STEERING

Articulation P&B ●●●	Hand Metering Unit ●●●	Lines / Fittings - STEERING ●●●
Oscillation Hitch ●●●	Overall Operating Condition ●●●	Steering Column / Tilt ●●●

Steering Cylinder
●●●

Steering Linkage
●●●

Steering Pump
●●●

Wheel
●●●

SUSPENSION

Center A-Frame
●●●

Center Bearings
●●●

Center Rubber Springs
●●●

Center Torsion Bars
●●●

Front A-Frame
●●●

Front Bearings
●●●

Front Rubber Springs
●●●

Front Torsion Bars
●●●

Left Suspension Beam
●●●

Rear A-Frame
●●●

Rear Bearings
●●●

Rear Rubber Springs
●●●

Rear Torsion Bars
●●●

Right Suspension Beam
●●●

BRAKE

Accumulators - BRAKE
●●●

Brake Drums / Rotors
●●●

Brake Guards
●●●

Compressor
●●●

Control Valve
●●●

Hydraulic Cooler
●●●

Lines
●●●

Parking Brake Operation
●●●

Pedal
●●●

Pump - BRAKE
●●●

Service Brake Operation
●●●

Type (Wet, Dry)
●●●

Leaks - BRAKE
NO

HYDRAULICS

Hydraulic Valves ●●●	Pump ●●●	Tank / Sight Glass / Cap ●●●
Leaks - HYDRAULICS NO		

FINAL DRIVES

Center Axle ●●●	Center Final Drives ●●●	Drive Shaft ●●●
Front Axle - FINAL DRIVES ●●●	Front Final Drives ●●●	Rear Axle ●●●
Rear Final Drives ●●●	Transfer Case / Dropbox ●●●	Universal Joints ●●●
Wheel Lugs & Rims ●●●		

TIRES

	Make / Serial#	Tread Depth in 1/32"	% Life Remaining	Recapped	Tread Cuts/Chunks	Side Cuts Section
Left Center	Bridgestone	34 32/nds	75.56%	NO	YES	YES
Left Front	Bridgestone	41 32/nds	91.11%	NO	YES	YES
Left Rear	Bridgestone	34 32/nds	75.56%	NO	YES	YES
Right Center	Bridgestone	36 32/nds	80.00%	NO	YES	YES
Right Front	Bridgestone	41 32/nds	91.11%	NO	YES	YES
Right Rear	Boto	37 32/nds	82.22%	NO	YES	YES

Radial
YES

Average Life Remaining - TIRES
82.59

Notes - TIRES
Several tires have large cuts



Tire Size - TIRES
23.5R25

COMMENTS, MISC. REPAIRS, GENERAL REMARKS

comment 1
Inspection

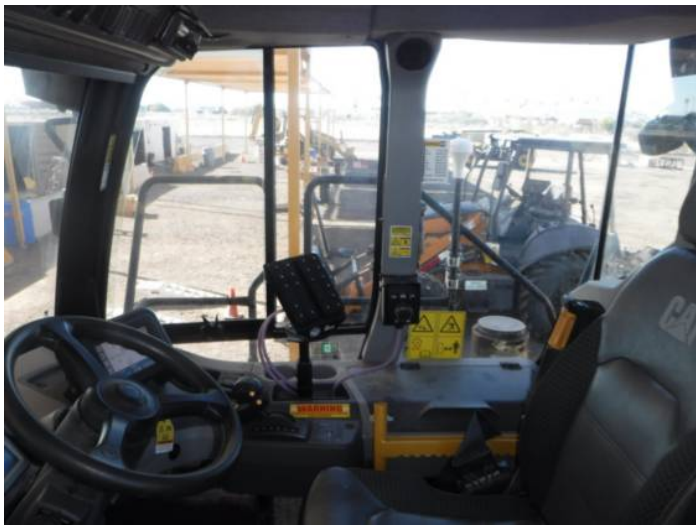
comment 2
PM-Service (please perform a
PM4)

MARKETING PHOTOS (31)











LINE ITEM PHOTOS (54)

Logged / Active Codes
YES

Logged Event Codes [Total Operating Hours = 4943 hours] - Transmission 730 (57M00807)				
Code	Description	Occ.	First	Last
98-3	Fuel Level Sensor : Voltage Above Normal	22	4920	4942

Fenders



Right side fender has cracks
And guard-muds on left and
right are cut.



Fuel Tank

●
Fuel level sensor bad. (fuel tank
at 100%)



Hood / Actuator

●●
HOOD & DOOR GP -HOOD Left
side hood panel is bent



Plastic (Exterior)

●●
PANEL GP-CAB right side panel
cracked



WALKWAY GP



WALKWAY GP Left side walk
way platform has rust.



Camera(s)



Seat Belt / Date Driver



Out dated 02/19 driver seat belt



Seat Belt / Date Passenger

●
Outdated 02/19 passenger seat
belt



Safety Decals Legible YES



Air Conditioner

●●●



Armrests

●
Driver seat arm rest both left
and right are broken



Heater / Defroster

●●●



Radio

●●●



Seat Cushions / Suspension /

Type

●●●
Seat recliner does not work
Driver seat arm rest both left
and right are broken (i ttested
the seat recliner and is working
perfectly fine)



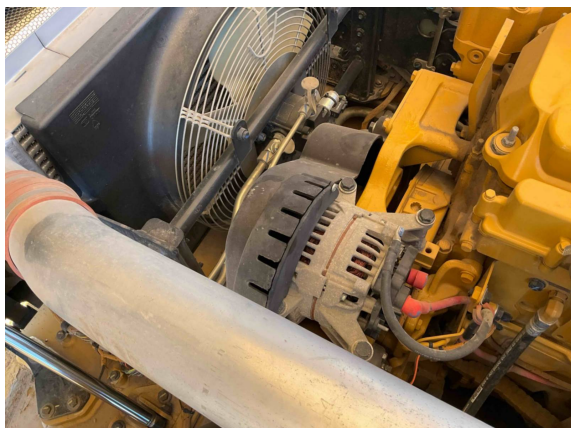
Windshield Wipers

●●
Sprayers do not work (wiper
nuzzle sprayer is plugged)



Belts / Pulleys - ENGINE

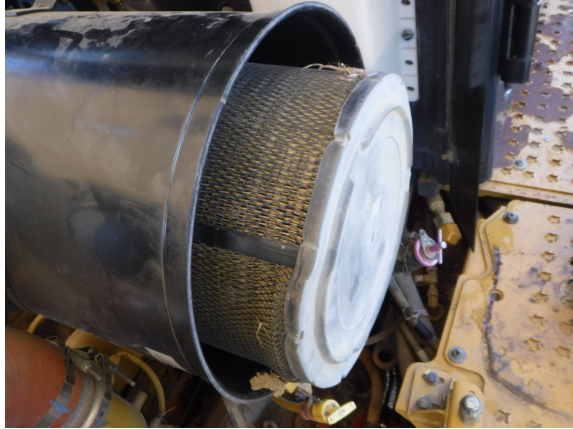
●●
Serpentine belt has cracks



Intake / Air Filters



Part of service



Pre Lube System

YES

Auto lube lines are disconnected and grease valve is rusty along with all fittings and lines



GUARD GP-RADIATOR -RH

●●
GUARD GP-RADIATOR -RH Is broken on 2 Different parts and right side grill is bent. (Its been repair before)



Jump Start Terminal
YES



	Make / Serial#	Tread Depth in 1/32"	% Life Remaining	Recapped	Tread Cuts/Chunks	Side Cuts Section
Left Center	Bridgestone	34 32/nds	75.56%	NO	YES	YES



	Make / Serial#	Tread Depth in 1/32"	% Life Remaining	Recapped	Tread Cuts/Chunks	Side Cuts Section
Left Front	Bridgestone	41 32/nds	91.11%	NO	YES	YES





	Make / Serial#	Tread Depth in 1/32"	% Life Remaining	Recapped	Tread Cuts/Chunks	Side Cuts Section
Left Rear	Bridgestone	34 32/nds	75.56%	NO	YES	YES



	Make / Serial#	Tread Depth in 1/32"	% Life Remaining	Recapped	Tread Cuts/Chunks	Side Cuts Section
Right Center	Bridgestone	36 32/nds	80.00%	NO	YES	YES



	Make / Serial#	Tread Depth in 1/32"	% Life Remaining	Recapped	Tread Cuts/Chunks	Side Cuts Section
Right Front	Bridgestone	41 32/nds	91.11%	NO	YES	YES





	Make / Serial#	Tread Depth in 1/32"	% Life Remaining	Recapped	Tread Cuts/Chunks	Side Cuts Section
Right Rear	Boto	37 32/nds	82.22%	NO	YES	YES



Notes - TIRES

Several tires have large cuts

