



2022 CAT
259D3
COMPACT TRACK LOADER

INSPECTION DETAILS

Inspection Type	Trade
Inspection Form	Standard
Inspection #	10256168
Inspection Status	Completed
Created	12/08/25 14:57:06
Updated	12/11/25 09:32:09
Created By	Preskitt, Billy
Inspector	Preskitt, Billy
Reviewers	Preskitt, Billy
Salesperson	Schultis, Derrick R.
Stock #	E196732
Serial #	CW920348
SMU / Hours	1,184
Location	Eloy, AZ 85131, United States



FEATURES

General

- 2 Speed Travel
- Coupler Type - Hydraulic
- Product Link
PRODUCT LINK, CELLULAR PL243
- Self Leveling
- Air Conditioner
- Heater / Defroster
- Radio - AM FM Radio
- Auxiliary Hydraulics Flow - Standard Flow
- Lighting
- ROPS - Enclosed

Regulatory

- Emissions Level - EPA - Tier4
- Emissions Level - Japan - 2014 Regulation
- Emissions Level - Korea - Korea-Tier4
- Ultra Low Sulfur Diesel Fuel

Attachments

- Bucket
80"

CONDITION

Good

Fair

Poor

Approved Repair

GENERAL CONDITION

Body <div><div></div><div></div><div></div></div>	Frame <div><div></div><div></div><div></div></div>	General <div><div></div><div></div><div></div></div>
ET Product Status Report Download YES	Logged / Active Codes NO	Machine Starts and is Operable YES
S.O.S. (All Compartments) NO Engine and hydraulic	Visible Oil Leaks NO	

GENERAL APPEARANCE

Cab or Canopy <div><div></div><div></div><div></div></div>	Counterweight <div><div></div><div></div><div></div></div>	Crankcase Guard / Battery Box <div><div></div><div></div><div></div></div>
Decals <div><div></div><div></div></div> Decals are scratched and peeling	<div><div></div></div> 6 Eng. Enclose Hood / Stack <div><div></div><div></div></div> Engine compartment door is bent (opens and closes as it should)	<div><div></div></div> 2 Fuel Tank <div><div></div><div></div><div></div></div>
Grab Irons <div><div></div><div></div><div></div></div>	Main Frame Welds <div><div></div><div></div><div></div></div>	Paint <div><div></div><div></div><div></div></div> Has scratches
Radiator Grill & Shroud <div><div></div><div></div><div></div></div> strut is leaking. screen has small dent	<div><div></div></div> 3 Sheet Metal <div><div></div><div></div><div></div></div>	Steps / Ladder <div><div></div><div></div><div></div></div>

Cleaning Required
YES

SAFETY ITEMS

Back Up Alarm <div><div></div><div></div><div></div></div>	Camera(s) <div><div></div><div></div><div></div></div>	<div><div></div></div> 1 Dead Engine Lowering Valve <div><div></div><div></div><div></div></div>
---	---	--

Horn
●●●

ROPS
●●●

Safety Locks / Pins
●●
Lift arm safety lock is broken

Seat Belt / Date
●
seat belt is expired 07-2022

Parking Brake Functioning
YES

ROPS Certification Plate
YES

1 Safety Decals In Place
YES

Safety Decals Legible
YES

OPERATOR STATION

Air Conditioner
●●●
vent temp 53.4

1 Armrests
●●●

Cab Filter / Heat Vent Louvres
●●● 1

Dash Console
●●
right side console is missing plug

1 Door Latches / Hinges / Seals 3
●
Door seal is torn. Missing top safety latch. inside door latch cover is cracked (replace only the emergency release latch on front window)

Floor Boards / Mats
●●●

Gauges
●●●

Headliner
●●●

Heater / Defroster
●●●
vent temp 109.6 1

Hour Meter - GAUGES,
OPERATION STATION, CONSOLE
●●●

Hydraulic Controls
●●●

2 Interior Lights
●●● 1

Interior Plastic / Fabric
●●●

Mirrors
●
Missing mirror

1 Monitoring Display
●●●

Radio
●●●

1 Seat Cushions / Suspension / Type
●●●

1 Switches
●●●

Visor / Sunshade ●●●	Windows ●●●	Windshield Wipers ●● Wiper blade is torn	📷1
Current O&MM YES	📷1	Current Safety Manual YES	📷1

ENGINE

Belts / Pulleys - ENGINE ●●●	📷2	Engine Oil Level / Condition ●●●	Exhaust / Muffler / Stack ●●●
Fuel Injection System ●●●	Intake / Air Filters ●● Part of service	📷1	Operating Condition - ENGINE ●●●
Turbocharger / Blower ●●●			
Apparent Other Engine Damage NO	Blow By NO	Emissions Decal Legible YES	📷1
Fuel Leaks NO	Knocking NO	Oil Leaks NO	
Pre Lube System NO	Water in Oil NO		

EMISSIONS

Aftertreatment System Codes NO	Leaks / Type NO		
--	---------------------------	--	--

COOLING SYSTEM

Anti-Freeze Level / Color / Condition ●●● Red	📷1	Coolers ●●●	Fan ●●●
Fan Drive / Type ●●●		Fan Shrouds / Guards ●●●	Hoses / Tubes ●●●

Radiator


Water Pump



Compression in Radiator
NO


Coolant Leaks
NO



Oil in Anti-Freeze
NO

Standard Radiator
YES

ELECTRICAL, STARTING AND CHARGING SYSTEM

Alternator


Batteries / Cables / Master
Disconnect



Lighting 

Right rear tail light is not working


Starter



Wiring



TANDEMS/GEARS/BEARINGS/CHAINS


Front Torsion Bars



Housings, Left


Housings, Right



Operating Condition


Planetaries / Differential, Left


Planetaries / Differential, Right


Rear Torsion Bars


Travel Controls




Travel Motors


Travel Pumps


Magnetic Plugs Removed &
Checked?
NO

HYDRAULICS

Detent Switch


Hoses / Lines 

auxiliary ports are missing dust caps

Lift Cylinders


Overall Operating Condition - HYDRAULICS ●●●	Pump & Valves ●●●	Tank ●● hydraulic tank strainer is leaking
Tilt Cylinder ●●●		
Leaks - HYDRAULICS YES Quoted under tank		

ATTACHMENTS / WORK TOOLS

Angle Broom NO	Auger NO	Cold Planer NO
Fork Line NO	Hammer NO	Landscape Tiller NO
Mulcher Head NO	Pick-up Broom NO	Stump Grinder NO
Trencher NO	Wheel Saw NO	

BUCKET

Bucket Bottom ●●● Has dents	📷2	Bucket Linkage ●●●	Bucket Sides ●●●	📷2
Cutting Edges ●●●	📷1	Loader Frame ●●●	Loader Pins & Bushings ●●●	
Quick Coupler ●●●				
Bucket step YES step is bent on bucket (can be straightened weld repair)	📷1			

Notes - BUCKET
both Bucket mounts are bent
(can be straightened weld
repair)

UNDERCARRIAGE

Idlers ●●●	Roller ●●●	Roller Frame ●●●
Sprocket ●●●	Track / Belt Condition ●● both Tracks have cuts	📷5

COMMENTS, MISC. REPAIRS, GENERAL REMARKS

comment 1 Service	comment 2 Inspection
----------------------	-------------------------

MARKETING PHOTOS (30)











LINE ITEM PHOTOS (51)

Decals



Decals are scratched and peeling



Eng. Enclose Hood / Stack



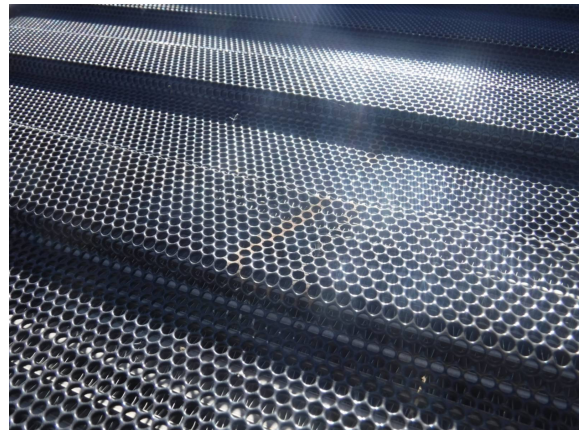
Engine compartment door is bent (opens and closes as it should)



Radiator Grill & Shroud



strut is leaking. screen has small dent



Camera(s)



Safety Locks / Pins



Lift arm safety lock is broken



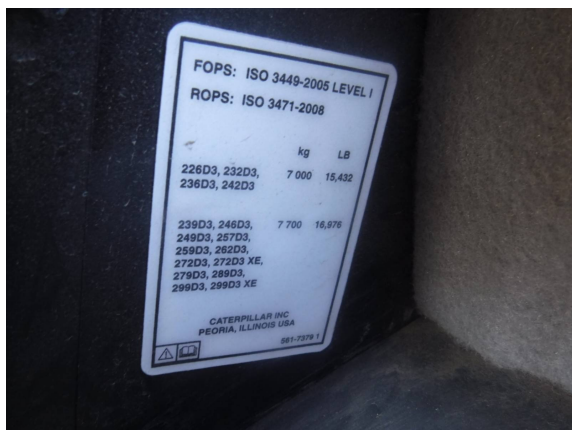
Seat Belt / Date



seat belt is expired 07-2022



ROPS Certification Plate
YES



Air Conditioner
●●●
vent temp 53.4



Cab Filter / Heat Vent Louvres
●●●



Dash Console

●●
right side console is missing
plug



Door Latches / Hinges / Seals

●
Door seal is torn. Missing top
safety latch. inside door latch
cover is cracked (replace only
the emergency release latch on
front window)



Heater / Defroster



vent temp 109.6



Hydraulic Controls



Interior Lights



Mirrors



Missing mirror



Radio



Seat Cushions / Suspension /

Type



Windshield Wipers



Wiper blade is torn



Current O&MM

YES

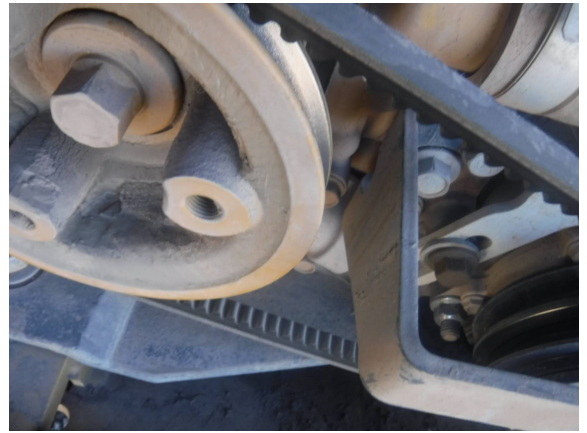
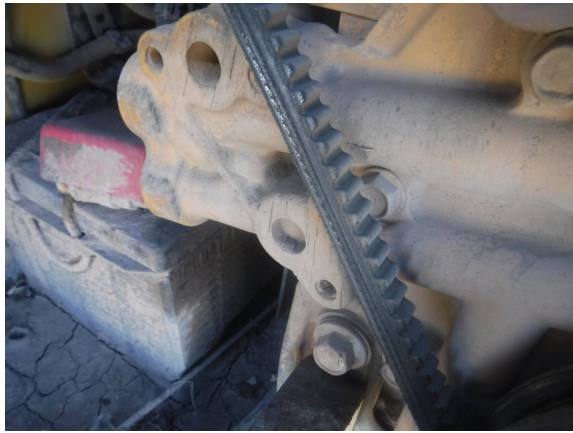


Current Safety Manual

YES



Belts / Pulleys - ENGINE



Intake / Air Filters



Part of service



Emissions Decal Legible

YES



Anti-Freeze Level / Color /
Condition



Red



Lighting



Right rear tail light is not
working



Hoses / Lines



auxiliary ports are missing dust
caps



Tank

●●
hydraulic tank strainer is
leaking



Bucket Bottom

●●●
Has dents



Bucket Sides

●●●



Cutting Edges



Bucket step

YES

step is bent on bucket (can be straightened weld repair)



Track / Belt Condition



both Tracks have cuts



