



2018 CAT
12M3AWD
MOTOR GRADERS

INSPECTION DETAILS

Inspection Type	Trade
Inspection Form	Standard
Inspection #	10254332
Inspection Status	Completed
Created	12/01/25 07:18:09
Updated	12/03/25 11:54:03
Created By	Willis, Joseph
Inspector	Willis, Joseph
Reviewers	Willis, Joseph
Salesperson	Schultis, Derrick R.
Stock #	E209344
Serial #	N9B00653
SMU / Hours	6,492
Location	Eloy, AZ, United States



FEATURES

General

- Air Conditioner
- Beacon
- Drive - All Wheel
- Mirrors
- Pushblock
- ROPS - Enclosed
- Throttle Lock
- Air Dryer
- Defroster Fan
- Guard, Transmission
- Moldboard Size - 14'
- Radio - AM FM Radio
- Steering Type - Joystick
- Tire Size
- Air Suspension Seat
- Differential Lock
- Lighting
- Product Link
- Ripper - Multi-Shank
- Supplemental Steering

Regulatory

- Ultra Low Sulfur Diesel Fuel

CONDITION

Good

Fair

Poor

Approved Repair

GENERAL CONDITION

Body <div><div></div><div></div><div></div></div>	Frame - GENERAL CONDITION <div><div></div><div></div><div></div></div>	General <div><div></div><div></div><div></div></div>
ET Product Status Report Download YES	Logged / Active Codes YES JOY STICK ISSUE. STEERING AND BLADE CUSHION CONTROL FAULT	<div><div></div><div></div></div> 2Machine Starts and is Operable YES
S.O.S. (All Compartments) NO ENGINE, TRANSMISSION, HYDRAULIC	Tires are Aired Up and Drivable YES	Visible Oil Leaks NO

GENERAL APPEARANCE

Battery Box <div><div></div><div></div><div></div></div>	Cab or Canopy <div><div></div><div></div><div></div></div>	Crankcase Guard / Transmission Guard <div><div></div><div></div><div></div></div> <div><div></div><div></div></div> 2Full of dirt. Part of wash
Decals <div><div></div><div></div><div></div></div>	Draw Bar <div><div></div><div></div></div> <div>Needs adjusted</div>	<div><div></div><div></div></div> 1Engine Enclosures <div><div></div><div></div><div></div></div>
Fenders <div><div></div><div></div><div></div></div>	Fiberglass <div><div></div><div></div><div></div></div>	Front Frame Welds <div><div></div><div></div><div></div></div>
Fuel Tank <div><div></div><div></div><div></div></div>	Grab Irons <div><div></div><div></div><div></div></div>	Hood <div><div></div><div></div><div></div></div>
Paint <div><div></div><div></div><div></div></div>	Plastic (Exterior) <div><div></div><div></div><div></div></div>	Pre-Cleaner Bowl <div><div></div><div></div><div></div></div>
Radiator Grill <div><div></div><div></div></div> <div>Dented can be repaired.</div>	<div><div></div><div></div></div> 1Rear Frame Welds <div><div></div><div></div><div></div></div>	Sheet Metal <div><div></div><div></div><div></div></div>

Steps / Ladder



Cleaning Required
YES

SAFETY ITEMS

Back Up Alarm



Beacon / Strobe



Camera(s)



Horn



ROPS



Seat Belt / Date



OUTDATED APRIL 2018



Secondary Exit



Parking Brake Functioning

YES

ROPS Certification Plate

YES

Safety Decals In Place

YES

Safety Decals Legible

YES

Safety Locks / Pins

YES

Service Brakes Functioning

YES

OPERATOR STATION

Air Conditioner



Armrests



68 AMBIENT TEMP AND 47 VENT TEMP

Right side is cracked



Cab Filter / Heat Vent Louvres



Dash Console



Door Latches / Hinges / Seals



Floor Boards / Mats



Gauges



Headliner



Heater / Defroster



64 AMBIENT TEMP AND 134 VENT TEMP



Hour Meter - GAUGES,
OPERATION STATION, CONSOLE



Hydraulic Controls



Interior Lights



Small operator lights are inop



Interior Plastic / Fabric ●●●	Mirrors ●●●	Monitoring Display ●●●
Pans/Guards ●●●	Radio ●● ANTENNA DAMAGE, HAS WIRE WRAPPED AROUND BASE	1 Seat Cushions / Suspension / Type ●●●
Switches ●●●	Transmission Controls ●●●	Visor / Sunshade ●●●
Windows ●●●	Windshield Wipers ●●●	
Current O&MM YES	1 Current Parts Manual YES CD	Current Safety Manual YES 1

ENGINE

Belts / Pulleys - ENGINE ●●●	Engine Oil Level / Condition ●●●	Engine Supports / Mounts ●●●
Exhaust / Muffler / Stack ●●●	Fuel Injection System ●●●	Governor ●●●
Intake / Air Filters ●●●	Operating Condition - ENGINE ●●●	Turbocharger / Blower ●●●
Blow By NO	Fuel Leaks NO	Knocking NO
Oil Leaks NO	Service Needed YES	Water in Oil NO
Oil Pressure (H/L/N) Normal	Smoke Color (B/D/L/W) Normal	

TECHNOLOGY

Display
●●●

EMISSIONS

Aftertreatment Heat Shields / Guards
●●●

DEF Lines / Wiring
●●●

Diesel Particulate Filter (DPF) Condition / Service Hours
●●●

Aftertreatment System Codes
NO

Leaks / Type
NO

COOLING SYSTEM

Anti-Freeze Level / Color / Condition
●●●
RED

Belts / Pulleys - COOLING SYSTEM
●●●

Coolers
●●●

Fan
●●●

Fan Drive / Type
●●●

Fan Shrouds / Guards
●●●

Hoses / Tubes
●●●

Radiator
●●●

Water Pump
●●●

Compression in Radiator
NO

Coolant Leaks
NO

Oil in Anti-Freeze
NO

Standard Radiator
YES

ELECTRICAL, STARTING AND CHARGING SYSTEM

Alternator
●●●

Batteries / Cables
●●●

Product Link / Condition
●●●

Starter
●●●

Wiring
●●●

Work Lights
●●
LEFT FRONT HEAD LIGHT IS INOP 

Active Codes
YES
Has steering malfunction. Does not fully turn right.

1 Jump Start Terminal
YES

Signal Lights
YES

TRANSMISSION

Case - TRANSMISSION
●●●

Controls - TRANSMISSION
●●●

Cooler
●●●

Lines / Fittings - TRANSMISSION
●●●

Operating Condition - TRANSMISSION
●●●

Pump - TRANSMISSION
●●●

Seals
●●●

Transmission - Forward Shifts
●●●

Transmission - Reverse Shifts
●●●

Transmission Oil Filter Condition / Service Hours
●●●

Valves
●●●

Leaks - TRANSMISSION
NO

Powershift
YES

Transmission - Noisy
NO

Notes - TRANSMISSION
Guard is packed with dirt. Part of wash.

ALL WHEEL DRIVE

All Wheel Drive Lines / Fittings
●●●

All Wheel Drive Operating Condition
●●●

All Wheel Drive Valve
●●●

Controls / Settings
●●●

Drive Motors
●●●

Pump
●●●

STEERING

Articulate P & B
●●●

King Pins
●●●

Lines / Fittings
●●●

Steering Cylinder ●●●	2 Steering Frame ●●●	Steering Linkage ●●●
Steering Operating Condition ● Will not turn fully to the right. Quoted above	Steering Pump ●●●	Supplemental Steering ●●●
Tie Rods / Rod Ends ●●●	Wheel / Joystick ● Joystick. Left side is abnormal. Part of steering code. Quoted above	Wheel Lean Cylinder - STEERING ●●●

BRAKE

Accumulators ●●●	Brake Linkage ●●●	Control Valve ●●●
Lines ●●●	Parking Brake Operation ●●●	Pedal ●●●
Service Brake Operation ●●●		

DRIVECHAIN / TANDEMS

Differential ●●●	Differential Lock / Operation ●●●	Drivetrain / Tandem Leaks ●●● 2 Has oil residue present on lower diff. Not leaking at time of inspection
Oscillating Hubs / Oil Level ●●●	Planetary ●●●	Tandem Housing / Drive Chains ●●●
Wheel Lugs & Rims ●●●		

HYDRAULICS

Blade Cushion ● Left side is not working part of joystick issue. QUOTED ABOVE	Circle Drive Box ●●●	Circle Side Shift Cylinder ●●● 1
---	-------------------------	--

Cylinder Mounts / Pins



Has movement at yoke pins and fiber bushings



Hydraulic Lines / Fittings



Has slight peeling on side shift cylinder lines. Not down to metal. Outer cover only.



Hydraulic Oil Filter Condition / Service Hours



Hydraulic Pump



Hydraulic Valves



Lift Cylinders



Linkage



Operating Condition - HYDRAULICS



Pump Drive Shaft



Saddle Pin / Actuator



Side Shift Cylinder



Tank / Sight Glass / Cap



Tip Cylinder



Leaks - HYDRAULICS

NO

BLADE

Circle A Frame



Circle Frame



Has movement and cracked wear strips on left side. Needs adjusted and new wear strips.



Circle Shoes / Inserts



Needs adjusted



Cutting Edge



Worn uneven and missing multiple bolts



Cylinder Balls / Caps



Needs adjusted ALL 4



Face / Moldboard



Frog / Base Edge



Moldboard Tip Brackets / Inserts



Needs adjusted



Ring Gear



Saddle



Tip Bracket Pivots / Bearings



Has movement at pins and bearings



RIPPER

Beam

●●●

Cylinders

●●●

Has slight movement at ripper cylinder mount trunnions

2

Frame

●●●

Lines / Fittings - RIPPER

●●●

Pins / Bushings

●●●

Shanks / Ripper (GET)

●●●

Center has home made hitch in shank pocket

3

Shanks / Scarifier (GET)

●●

3 SHANKS ONLY

3

TIRES

	Make / Serial#	Tread Depth in 1/32"	% Life Remaining	Recapped	Tread Cuts/Chunks	Side Cuts Section
Left Center	Maxam	25	65	NO	YES	YES
Left Front	Yokohama	14	34	NO	YES	YES
Left Rear	Maxam	25	65	NO	YES	YES
Right Center	Maxam	25	65	NO	YES	YES
Right Front	Firestone	0	0	NO	YES	YES
Right Rear	Maxam	25	65	NO	YES	YES
Bias						
YES						

COMMENTS, MISC. REPAIRS, GENERAL REMARKS

comment 1

INSPECT

comment 2

NEXT SERVICE DUE AT 6595

MARKETING PHOTOS (31)











MODEL
NUMBER 12M3 AWD

CAT[®] CATERPILLAR[®]
CAT[®] CATERPILLAR[®] 

PRODUCT
IDENTIFICATION
NUMBER *CAT0012MHN9B00653*



	MODEL NUMBER	SERIAL NUMBER	ARRANGEMENT NUMBER
	C-9 3	*SYE2886	
		*CM304798	

CATERPILLAR INC.
PEORIA, ILL. 61659
USA

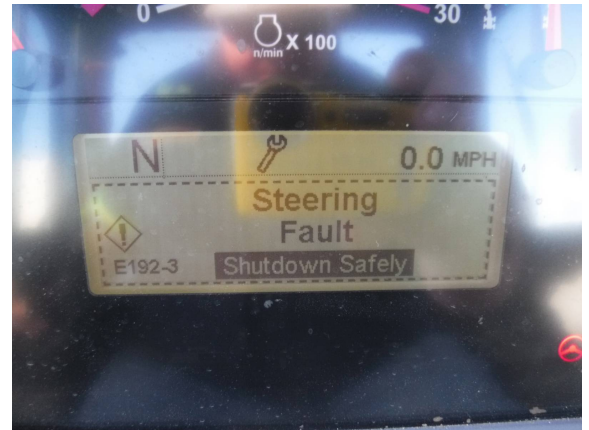
NUMBER OF PARTS
OF DOMESTIC AND
FOREIGN COMPONENTS

LINE ITEM PHOTOS (77)

Logged / Active Codes

YES

JOY STICK ISSUE. STEERING
AND BLADE CUSHION
CONTROL FAULT



Crankcase Guard /
Transmission Guard



Full of dirt. Part of wash



Draw Bar



Needs adjusted



Radiator Grill



Dented can be repaired.



Beacon / Strobe



Camera(s)



Seat Belt / Date

●
OUTDATED APRIL 2018



Air Conditioner

●●●
68 AMBIENT TEMP AND 47
VENT TEMP



Armrests

●●
Right side is cracked



Heater / Defroster



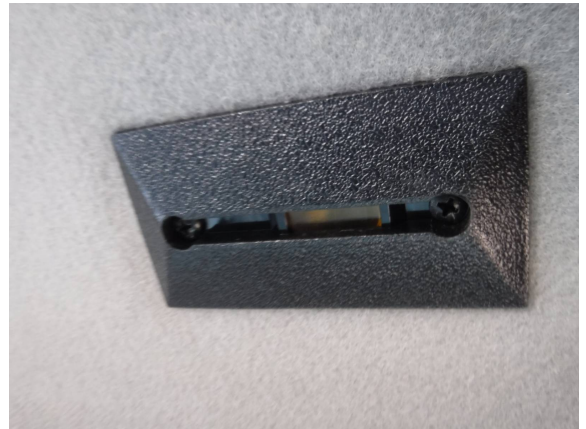
64 AMBIENT TEMP AND 134
VENT TEMP



Interior Lights



Small operator lights are inop

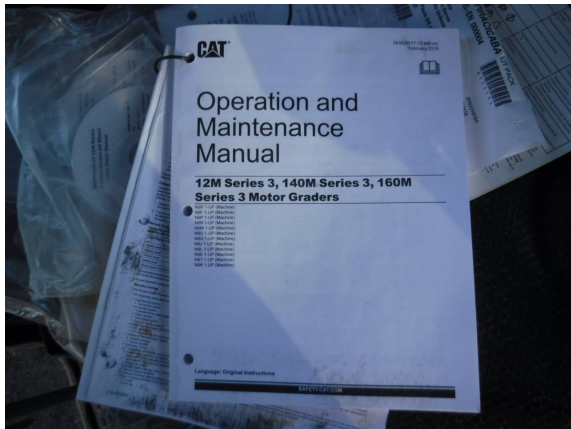


Radio

●●
ANTENNA DAMAGE, HAS WIRE
WRAPPED AROUND BASE



Current O&MM YES



Current Safety Manual YES



Work Lights



LEFT FRONT HEAD LIGHT IS
INOP





Active Codes

YES

Has steering malfunction. Does not fully turn right.



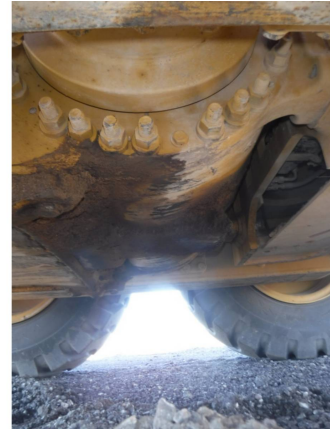
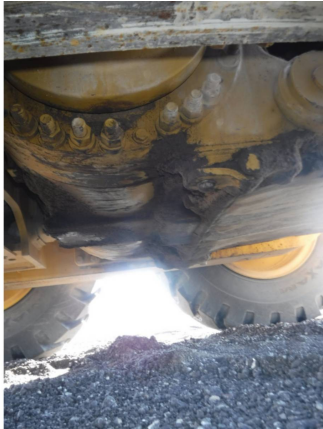
Steering Cylinder



Drivetrain / Tandem Leaks



Has oil residue present on lower diff. Not leaking at time of inspection



Circle Side Shift Cylinder



Cylinder Mounts / Pins



Has movement at yoke pins and fiber bushings



Hydraulic Lines / Fittings



Has slight peeling on side shift cylinder lines. Not down to metal. Outer cover only.



Lift Cylinders



Side Shift Cylinder



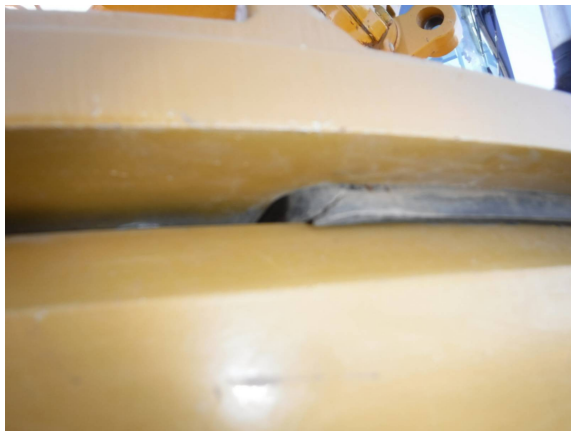
Tip Cylinder



Circle Frame



Has movement and cracked wear strips on left side. Needs adjusted and new wear strips.





Circle Shoes / Inserts



Needs adjusted



Cutting Edge



Worn uneven and missing
multiple bolts



Cylinder Balls / Caps



Needs adjusted ALL 4



Moldboard Tip Brackets / Inserts



Needs adjusted



Tip Bracket Pivots / Bearings



Has movement at pins and bearings



Cylinders



Has slight movement at ripper
cylinder mount trunnions



Shanks / Ripper (GET)



Center has home made hitch in
shank pocket



Shanks / Scarifier (GET)



3 SHANKS ONLY



	Make / Serial#	Tread Depth in 1/32"	% Life Remaining	Recapped	Tread Cuts/Chunks	Side Cuts Section
Left Center	Maxam	25	65	NO	YES	YES





	Make / Serial#	Tread Depth in 1/32"	% Life Remaining	Recapped	Tread Cuts/Chunks	Side Cuts Section
Left Front	Yokohama	14	34	NO	YES	YES



	Make / Serial#	Tread Depth in 1/32"	% Life Remaining	Recapped	Tread Cuts/Chunks	Side Cuts Section
Left Rear	Maxam	25	65	NO	YES	YES



	Make / Serial#	Tread Depth in 1/32"	% Life Remaining	Recapped	Tread Cuts/Chunks	Side Cuts Section
Right Center	Maxam	25	65	NO	YES	YES





	Make / Serial#	Tread Depth in 1/32"	% Life Remaining	Recapped	Tread Cuts/Chunks	Side Cuts Section
Right Front	Firestone	0	0	NO	YES	YES



	Make / Serial#	Tread Depth in 1/32"	% Life Remaining	Recapped	Tread Cuts/Chunks	Side Cuts Section
Right Rear	Maxam	25	65	NO	YES	YES

