



2017 JOHN DEERE 300GLC EXCAVATOR

INSPECTION DETAILS

Inspection Type	Trade
Inspection Form	Standard
Inspection #	10258416
Inspection Status	Completed
Created	12/16/25 14:24:06
Updated	12/30/25 11:18:30
Created By	Preskitt, Billy
Inspector	Preskitt, Billy
Reviewers	Preskitt, Billy
Salesperson	Schultis, Derrick R.
Stock #	E212183
Serial #	1FF300GXLHF730567
SMU / Hours	4,259
Location	Eloy, AZ 85131, United States



FEATURES

General

- Air Conditioner
- Mirrors
- Hand and Foot Control
- Radio - AM FM Radio
- Lighting

Regulatory

- Emissions Level
- Ultra Low Sulfur Diesel Fuel

Attachments

- Bucket
54" bucket

CONDITION

●●●

Good

●●

Fair

●

Poor

Approved Repair

GENERAL CONDITION

Body ●●●	Frame ●●●	General ●●● cab has deep scratches on right side by serial decal
ET Product Status Report Download NO non cat machine	Machine Starts and is Operable YES	S.O.S. (All Compartments) NO Engine and hydraulic
VIDS/VIMS Download Available NO		

GENERAL APPEARANCE

Bumper ●●●	Cab or Canopy ●●●	Car Body ●●●
Catwalk ●●●	Counterweight ●● Has deep gouges in counter weight	Crankcase Guard / Battery Box ● Crank case guards are bent and missing hardware
Draw Bar ●●●	Eng. Enclose Hood / Stack ●●●	Engine Doors ●●●
Fenders ●● Left and right side fenders have dents	Fuel Tank ●●●	Grab Irons ●● Grab handle on cab is bent
Hood ●●●	Main Frame Welds ●●●	Paint ●●● paint is fading and has scratches

Radiator Grill & Shroud Radiator compartment door is bent	1	Sheet Metal Hydraulic compartment doors are bent and missing latch	2	Steps / Ladder Left rear step is bent	1
--	---	---	---	--	---

Cleaning Required
YES

Extra Fuel Tanks
NO

SAFETY ITEMS

Glass / Mirrors Left rear mirror is broken	1	Horn 	ROPS
Seat Belt - SAFETY ITEMS No date tag on seat belt	1		
Back Up Alarm Functioning YES		ROPS YES	Safety Decals In Place YES
Safety Decals Legible YES			

OPERATOR STATION

Air Conditioner <div><div></div><div></div></div> vent temp 49.5 Ambient temp 60.5 (Dash Console <div><div></div><div></div><div></div></div>	Door Latches <div><div></div><div></div><div></div></div>
Door Latches & Hinges <div><div></div><div></div><div></div></div>	Floor Mats <div><div></div><div></div><div></div></div>	Gauges <div><div></div><div></div><div></div></div>
Glass/Mirrors <div><div></div><div></div><div></div></div>	Heater <div><div></div><div></div><div></div></div> vent temp 105.1	<div><div></div>1</div> Interior Lights <div><div></div><div></div><div></div></div>
Meter <div><div></div><div></div><div></div></div>	Seat Cushion / Arm Rest <div><div></div><div></div></div> Seat cushions have stains	<div><div></div>1</div> Switches <div><div></div><div></div><div></div></div> Switches are fading

Travel Controls (Type)
●●●

📷1 Vent/louver
●●
left rear vent louver is broke

📷1 Windshield Wipers
●●
Wiper blade is torn washer fluid tank does not hold water

Current O&MM
YES

📷1 Current Safety Manual
YES

📷1

ENGINE

Air Cleaners
●●
Part of service

Belts / Pulleys - ENGINE
●●●

Engine Supports
●●●

Exhaust / Muffler
●●●

Fuel Injection System
●●●

Fuel System
●●●

Operating Condition - ENGINE
●●●

Turbocharger
●●●

Turbocharger / Blower
●●●

Apparent Other Engine Damage 📷1
YES
Engine wiring, harness has been spliced

Blow By
NO

Compression in Radiator
NO

Emissions Decal
YES

📷1 Engine Oil Level Full
YES

Fluid Levels OK?
YES

Fuel Leaks
NO

Knocking
NO

Oil filter Cut and Inspected
NO

Oil Leaks
YES
Valve cover has oil residue on top

📷1 Water in Oil
NO

COOLING SYSTEM

Coolers
●●●

Fan
●●●

Fan Drive
●●●

Hoses
●●●

Hoses & Tubes - COOLING
SYSTEM
●●●

Radiator
●●●

Water Pump
●●●

Leaks
NO

ELECTRICAL, STARTING AND CHARGING SYSTEM

Alternator
●●●

Batteries / Cables
●●●

Lighting
●●●

Starter
●●●

Wiring
●●●

HYDRAULICS

Boom Cylinder
●●●

Bucket Cylinder
●●●

Control Linkage
●●●

Hoses & Tubes - HYDRAULICS
●●●

Hydraulic Swivel
●●●

Operating Condition -
HYDRAULICS
●●
Hydraulics are slow and pump makes
loud whining noise

Pump Drive
●●
hydraulic pump is wet

📷1 Stick Cylinder
●●●

Swing Gear
●●●

Swing Motors
●●
Swing motors make grinding noise
when swinging left or right

Tank
●●●

Travel Motors
●●●

ATTACHMENTS / WORK TOOLS

Auger
NO

Claw
NO

Crusher
NO

Grapple
NO

Hammer
NO

Pulverizer
NO

Ripper
NO


Shear
NO



Thumb
NO

Tilting Ditch Bucket
NO

Vibratory Plate
NO



BOOM


Boom Condition


Pins & Bushings - BOOM 1

pins and bushings have movement

Boom Length (Actual Length)
244"


STICK



Pins & Bushings - STICK 1

stick pins and bushings have movement

Stick Conditions


Stick Length
148"



BUCKET

Bucket Bottom


1 Bucket Linkage

bucket linkage has movement

1 Bucket Mounts


Bucket Sides


2 Teeth / Adapters

Plate welded to G.E.T

1

Quick Coupler
NO

Width
54"

UNDERCARRIAGE

Track Frame - Left
●●●

Track Frame - Right
●●●

Pins & Bushings Turned?
NO

Notes - UNDERCARRIAGE
Track links are dry and squealing

Notes - UNDERCARRIAGE 2
All track rollers are showing
signs of leaking



10

FINAL DRIVES

Drive Motors
●●●

Housings
●●●

Planetaries
●●●

Chip Detectors Operational
NO

Left Final Drive Mag Plug
Inspected
NO

Right Final Drive Mag Plug
Inspected
NO

COMMENTS, MISC. REPAIRS, GENERAL REMARKS

comment 1
Service

comment 2
Inspection

MARKETING PHOTOS (31)













JOHN DEERE

Product Identification Number

1FF300GXLHF730567



EXCAVATOR 300G

DEERE & COMPANY, MOLINE, ILLINOIS, USA

LINE ITEM PHOTOS (44)

General



cab has deep scratches on right side by serial decal



Counterweight



Has deep gouges in counter weight



Crankcase Guard / Battery Box



Crank case guards are bent and missing hardware



Fenders



Left and right side fenders have dents



Grab Irons



Grab handle on cab is bent



Radiator Grill & Shroud



Radiator compartment door is bent



Sheet Metal

●●
Hydraulic compartment doors
are bent and missing latch



Steps / Ladder

●●
Left rear step is bent



Glass / Mirrors

●●
Left rear mirror is broken



Seat Belt - SAFETY ITEMS



No date tag on seat belt



Heater



vent temp 105.1



Interior Lights



Seat Cushion / Arm Rest



Seat cushions have stains



Travel Controls (Type)



Vent/louver



left rear vent louver is broke



Windshield Wipers



Wiper blade is torn washer fluid
tank does not hold water



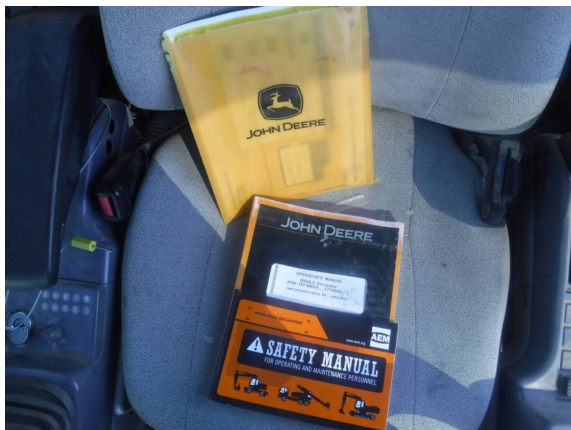
Current O&MM

YES



Current Safety Manual

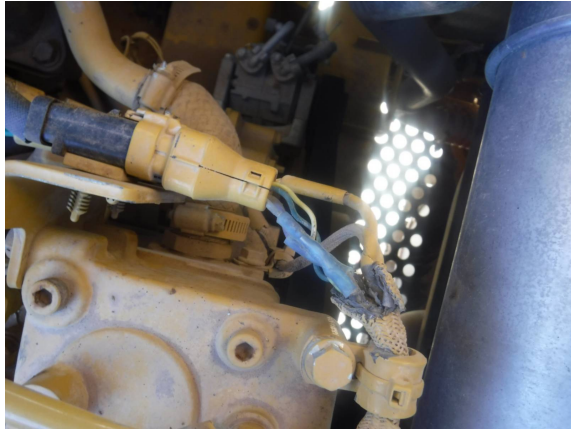
YES



Apparent Other Engine Damage

YES

Engine wiring, harness has been spliced



Emissions Decal

YES



Oil Leaks

YES

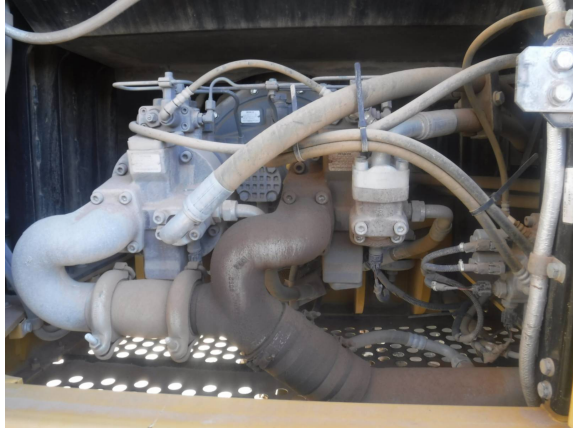
Valve cover has oil residue on top



Pump Drive



hydraulic pump is wet



Pins & Bushings - BOOM



pins and bushings have movement



Pins & Bushings - STICK



stick pins and bushings have movement



Bucket Bottom



Bucket Linkage



bucket linkage has movement



Bucket Sides



Teeth / Adapters



Plate welded to G.E.T



Notes - UNDERCARRIAGE 2

All track rollers are showing signs of leaking



