



2020 CAT
14013
MOTOR GRADERS

INSPECTION DETAILS

Inspection Type	Marketing
Inspection Form	Standard
Inspection #	10187322
Inspection Status	Completed
Created	03/07/25 16:42:16
Updated	04/08/25 15:50:07
Created By	Calderas, Marco
Inspector	Calderas, Marco
Reviewers	Willis, Joseph
Salesperson	Schultis, Derrick R.
Stock #	E201803
Serial #	N9400352
SMU / Hours	5,266
Location	Eloy, AZ, United States



FEATURES

General

- Air Conditioner
- Differential Lock
- Lighting
- Product Link
- Ripper - Multi-Shank
- Throttle Lock
- Air Suspension Seat
- Drive - Tandem
- Mirrors
- Pushblock
- ROPS - Enclosed
- Defroster Fan
- Guard, Transmission
- Moldboard Size - 14'
- Radio - AM FM Radio
- Steering Type - Wheel

Regulatory

- Ultra Low Sulfur Diesel Fuel

MARKETING PHOTOS (31)









BRASIL LTDA
DISTRITO UNILESTE
BRAS. MADE IN BRAZIL
0001-77
202-0824 1

CAT00140PN9400352

MODEL 940
S.N.D. 940
PRODUCT IDENTIFICATION NUMBER *CAT00140PN9400352*

	MODEL NUMBER	SERIAL NUMBER	ARRANGEMENT NUMBER
Ø	2978	15155821	1502-7010
○		10700164	1517-8360

202-4100 8

CATERPILLAR INC.
PEORIA, IL 61629
USA
MADE IN BRAZIL
OF DOMESTIC AND
FOREIGN COMPONENTS

LINE ITEM PHOTOS (35)

Paint



Has scratches



Sheet Metal



Right side guard under cab is dented.



Steps / Ladder



Right side hanger bracket is bent.



Camera(s)



Seat Belt / Date

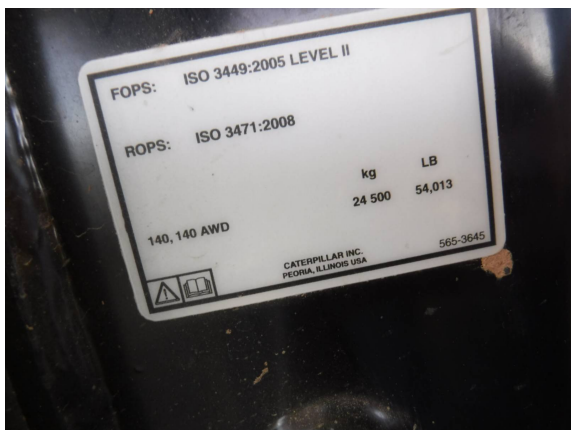


2025



ROPS Certification Plate

YES



Air Conditioner



Ambient temp at 74.5F and
Vent temp at 47.8F



Heater / Defroster



Seat Cushions / Suspension / Type



HAS SMALL HOLE



Windshield Wipers

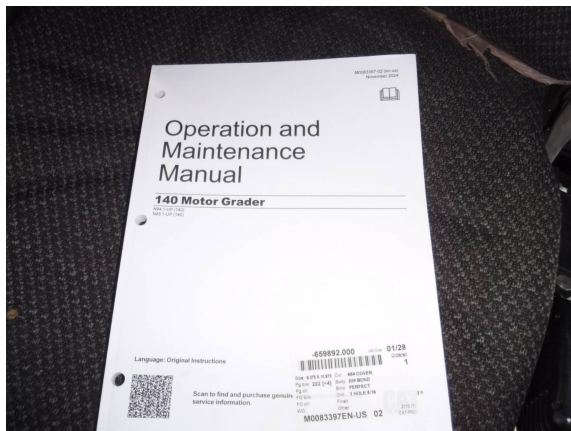


Rear washers are inop.



Current O&MM

YES



Current Safety Manual

YES



Cylinder Mounts / Pins



Has movement



Moldboard Tip Brackets / Inserts



Slide brass worn



Tip Bracket Pivots / Bearings



Has movement in pins and bushings



CYLINDER MOUNTS



Has movement at trunnions.



	Make / Serial#	Tread Depth in 1/32"	% Life Remaining	Recapped	Tread Cuts/Chunks	Side Cuts Section
Left Center	YOKOHAMA	23	52	NO	YES	YES



	Make / Serial#	Tread Depth in 1/32"	% Life Remaining	Recapped	Tread Cuts/Chunks	Side Cuts Section
Left Front	YOKOHAMA	17	36	NO	YES	YES



	Make / Serial#	Tread Depth in 1/32"	% Life Remaining	Recapped	Tread Cuts/Chunks	Side Cuts Section
Left Rear	YOKOHAMA	26	58	NO	YES	YES





	Make / Serial#	Tread Depth in 1/32"	% Life Remaining	Recapped	Tread Cuts/Chunks	Side Cuts Section
Right Center	YOKOHAMA	27	61	NO	YES	YES



	Make / Serial#	Tread Depth in 1/32"	% Life Remaining	Recapped	Tread Cuts/Chunks	Side Cuts Section
Right Front	BRIDGESTONE	12	27	NO	YES	YES



	Make / Serial#	Tread Depth in 1/32"	% Life Remaining	Recapped	Tread Cuts/Chunks	Side Cuts Section
Right Rear	YOKOHAMA	26	58	NO	YES	YES



