



2018 CAT
980M
WHEEL LOADER

INSPECTION DETAILS

Inspection Type	Marketing
Inspection Form	Wheel Loaders
Inspection #	10251729
Inspection Status	Created
Created	11/18/25 15:43:37
Updated	12/12/25 11:58:09
Created By	Akutey, Solomon
Inspector	Heath, Jason
Salesperson	Heath, Jason
Stock #	E209360
Serial #	KRS02937
SMU / Hours	11,110
Location	SPARKS, NV 89431, United States



FEATURES

General

- Air Conditioner
 - Counterweight
 - Differential Lock
 - Lighting
 - Radio - Bluetooth
 - Steering Type - Joystick
- Auto Shift
 - Coupler - Standard
 - Engine Enclosures
 - Mirrors
 - Ride Control
- Boom, GP
 - Coupler Type - Mechanical
 - Lift - Standard
 - Product Link
 - ROPS - Enclosed

Regulatory

- Emissions Level - EPA - EPA TIER 4f
 - Ultra Low Sulfur Diesel Fuel
- Emissions Level - Japan - STEP 4 FINAL
- Regulatory Status - EPA / CARB / MLIT

Attachments

- Bucket

CONDITION



Good



Fair



Poor

GENERAL APPEARANCE

Battery Compartment



Bottom Guards



Cab / Canopy



Counterweight



Scrapes/scratches



3

Engine Enclosure Panels



Bent right side engine panel/Few cracks in hood in Fiberglas, left rear hood guide dislocated-missing bolt



4

Fenders



Faded paints



2

Fiberglass



Cracks in the hood



3

Front Frame



Fuel Tank



Missing mount and bolt/strainer



3

Grab Handles / Handrails



Guards / Screens



Hood Panels



See other comments

Mud / Splash Guards



2

Paint & Decals



Faded, peeling on hood/bucket and counterweight



5

Plastic Covers



Seat gouged a hole in the back plastic cover



1

Platforms



Radiator Enclosure / Grill



Rear Frame



Sheet Metal Panels



Right rear side panel dented



1

Steps / Ladder



Bent



4

Storage Compartments



Dents on the bottom edges

Cleaning Required

NO

S.O.S. Taken

NO

Taken at 11110

Service Required?

NO

Notes - GENERAL APPEARANCE  4

Dents on bottom of def cage and missing bolts/bottom of storage cage

SAFETY ITEMS

Alternate Exit <div><div></div><div></div><div></div></div>	Back-Up Alarm <div><div></div><div></div><div></div></div>	Horn <div><div></div><div></div><div></div></div>
Implement Safety Lockout <div><div></div><div></div><div></div></div>	Rear View Mirrors <div><div></div><div></div><div></div></div>	Reflectors / Reflective Labels <div><div></div><div></div><div></div></div> <div>Torn</div> <div>📷1</div>
ROPS <div><div></div><div></div><div></div></div>	Seat-Belt <div><div></div><div></div><div></div></div>	Warning / Safety Labels <div><div></div><div></div><div></div></div>
ROPS Certification Label YES	📷1	

OPERATOR STATION

Air Conditioner <div><div></div><div></div><div></div></div>	Cab Floor <div><div></div><div></div></div> <div>Clean/small rip in floor mat</div>	📷1 Cab Interior Trim <div><div></div><div></div><div></div></div>
Consoles <div><div></div><div></div><div></div></div>	Dash Console <div><div></div><div></div><div></div></div>	Doors / Latches <div><div></div><div></div><div></div></div> <div>Worn door seal</div>
Floor Boards <div><div></div><div></div><div></div></div>	Gauges / Instrument Panel <div><div></div><div></div><div></div></div>	Glass & Windows <div><div></div><div></div><div></div></div> <div>Front windshield will need re-gluing on the lower front</div>
Heater <div><div></div><div></div><div></div></div>	Hour Meter <div><div></div><div></div><div></div></div>	Interior Lights <div><div></div><div></div><div></div></div>
Monitor / Warning Alarm <div><div></div><div></div><div></div></div>	Product Link <div><div></div><div></div><div></div></div>	Seat / Suspension / Arm Rests <div><div></div><div></div></div> <div>Multiple rips on the bottom cushion cloth</div> <div>📷1</div>
Switches <div><div></div><div></div><div></div></div>	Windshield Wipers <div><div></div><div></div><div></div></div>	

Cameras YES	1	ECM Downloaded YES	O&M Manual YES Worn	1
Radio YES		Safety Manual YES		

ENGINE

Air Cleaners Due for PM		Belts & Pulleys Torn	4	Engine Air Inlet
Engine Block / Cylinder Head 		Engine Exhaust 		Engine Front / Rear Housings
Engine Operating Condition Stalled at 1974 rpm at 21 psi boost		Engine Pre-Cleaner 		Engine Supports
Exhaust / Muffler 		Fuel Lines & Filters Oil leak at fuel transfer pump mount	2	Governor
Turbocharger 				
Emission Label YES	1	Engine Blow-By? NO		Engine Noises? NO
Engine Oil Leaks YES Oil leaks on filter base	1	Fluid Levels OK? YES		Fuel Leaks NO
Water In Engine Oil? NO				
Antifreeze Color? Red		Diesel Exhaust Fluid (DEF) Level - ENGINE 5% full		Oil Pressure (H/L/N) 60/41 psi

Smoke (B/D/L/W)
Normal

COOLING SYSTEM

Coolers ●●●	Engine Cooling Tubes & Hoses ●●●	Fan ●●●
Fan Drive ●●●	Radiator ●●●	Radiator Shroud / Fan Guard ●●●
Water Pump ●●●		
Compression In Radiator? NO	Cooling System Leaks NO	Oil in Anti-Freeze NO

Notes - COOLING SYSTEM 📷4
Minor leaks on hose clamps,
from field inspection, machine
been washed

ELECTRICAL, STARTING AND CHARGING SYSTEM

Alternator ● Torn belt	Battery & Wiring ●●●	Lighting ●● Two lights on hood and two on rear of cab are out 📷3
Starter ●●●	Wiring ●● Secure harness at right rear	📷1

Notes - ELECTRICAL, STARTING AND CHARGING SYSTEM 📷1
ET mounting plate broken, plug
not secured

TRANSMISSION

Case-Transfer ●●●	Case-Transmission ●●●	Controls-Transmission ●●●
----------------------	--------------------------	------------------------------

Cooler



Torque Converter



Transmission Oil Lines & Tubes



Minor cracks in hoses/good for machine hours

Transmission Operating Condition



Transmission - Noisy

NO

Transmission Oil Leaks

NO

STEERING

Articulation Hitch Pins & Bushings



Articulation Lock Linkage



Articulation Stops



Controls-Steering



Steering Operating Condition



Steering Cylinder



Steering Cylinder Pins & Bushings



Steering Oil Lines & Tubes



Steering Valves / Pumps



BRAKE

Brake Accumulators



Brake Control Valve



Brakes Holding Ability Test



Brakes Oil Lines & Tubes



Brakes Operating Condition



Park Brake Holding Ability Test



Pedal



Clean dirt around pedal, makes scraping sound

Brake System Leaks

NO

Holding What Gear?
2nd

Notes - BRAKE
Very small oil traces on brake
accumulator valve solenoid,
clean



HYDRAULICS

Bucket & Hoist Kickout
●●●

Controls-Hydraulic
●●●

Cylinder Pins & Bushings
●●●

Hydraulic Oil Lines & Tubes
●●●
Clean and tighten hose clamp under
hyd tank

Hydraulic Operating Condition
●●●

Lift Cylinders
●●
Minor oil traces on the left side



Pumps & Valves
●●●
Small oil traces on fan/brake pump
mounting gasket

Ride Control Operation
●●●

Tank Hydraulic
●●●

Tilt Cylinders
●●●

Hydraulic System Leaks
NO

BUCKET

Bucket Bottom
●●●

Bucket Floor
●●●

Bucket Pins & Bushings
●●●

Bucket Sides
●●●

Bucket Spill Guard
●●●



Coupler Pins & Bushings
●●●

Cutting Edges
●●●

Loader Frame
●●●

Loader Pins & Bushings
●●●

Segments
●●●

Tilt Linkages
●●●

Tilt Linkages Pins & Bushings
●●●

Standard Lift
YES

Bucket S/N - BUCKET
Z1A21519 Bucket condition good
for machine hours



Bucket Size
7.75 CYD

Notes - BUCKET
Machine did not come with field
inspection bucket, bucket was
swapped. (S/N Z1A25422)

ATTACHMENTS / WORK TOOLS

Lift Boom
YES



FINAL DRIVES

Differential / Axle Mounts
●●●

Differentials
●●●

Drive Shafts
●●●

Front Axle
●●●

Front Final Drives
●●●

Oscillation
●●●

Rear Axle
●●●

Rear Final Drives
●●●

Trunion
●●●

Axles, Differentials, Finals-Leaks
NO

TIRES

	Make / Serial#	Tread Depth in 1/32"	% Life Remaining	Recapped	Tread Cuts/Chunks	Side Cuts Section
Left Front	ContiEarth EM- Master	68	91	NO	YES	YES
Left Rear	Michelin XHA2	37	74	NO	YES	YES
Right Front	ContiEarth EM- Master	68	91	NO	YES	YES
Right Rear	Bridgestone VJT	33	62	NO	YES	YES

Rims / Wheels Condition
●●●

Notes - TIRES
79% average tire tread depth



Tire Size - TIRES
29.5R25

COMMENTS, MISC. REPAIRS, GENERAL REMARKS

comment 1
Remove client/Cashman house
numbers

Date of Machine Inspection
Inspected on 10/30/25 at 11109
hours

MARKETING PHOTOS (32)











LINE ITEM PHOTOS (76)

Counterweight



Scrapes/scratches

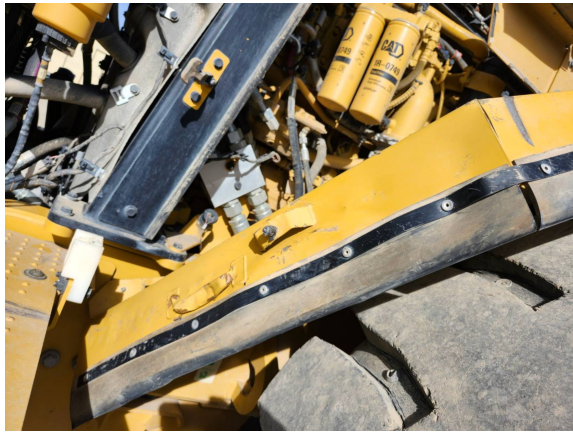


Engine Enclosure Panels



Bent right side engine panel/Few cracks in hood in Fiberglass, left rear hood guide dislocated-missing bolt





Fenders



Faded paints



Fiberglass



Cracks in the hood





Fuel Tank

●●
Missing mount and
bolt/strainer



Mud / Splash Guards



Paint & Decals



Faded, peeling on hood/bucket and counterweight





Plastic Covers



Seat gouged a hole in the back plastic cover



Sheet Metal Panels



Right rear side panel dented



Steps / Ladder



Bent



Reflectors / Reflective Labels



Torn



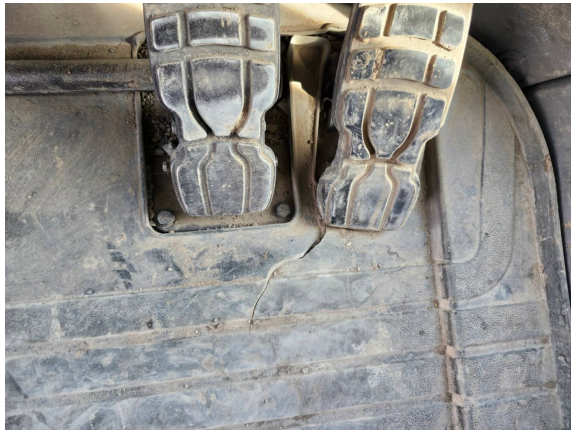
ROPS Certification Label
YES



Cab Floor



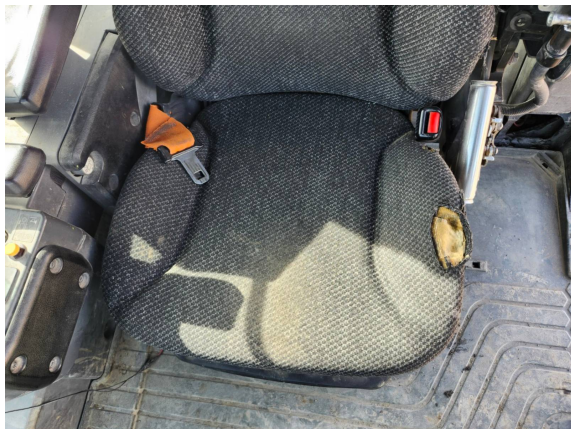
Clean/small rip in floor mat



Seat / Suspension / Arm Rests



Multiple rips on the bottom cushion cloth



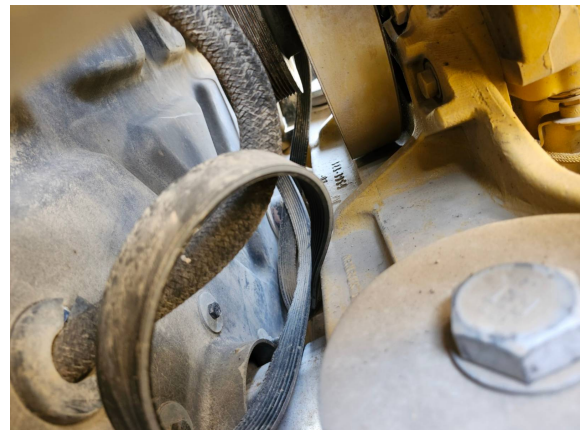
Cameras
YES



O&M Manual
YES
Worn



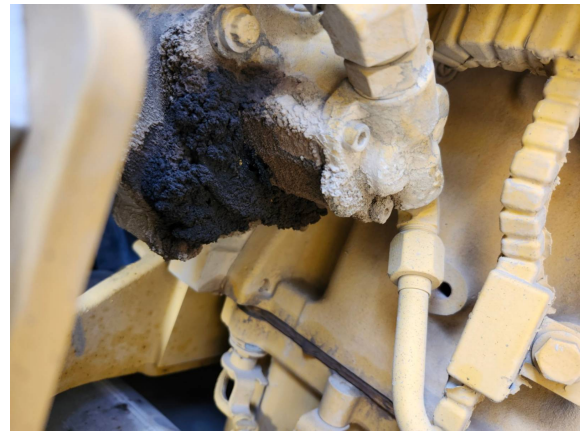
Belts & Pulleys
●
Torn





Fuel Lines & Filters

Oil leak at fuel transfer pump mount



Emission Label

YES



Engine Oil Leaks

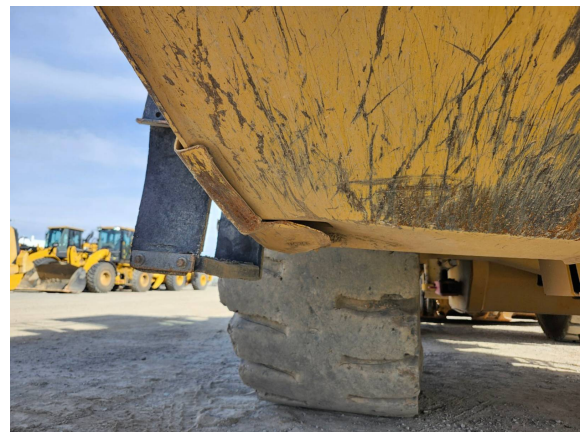
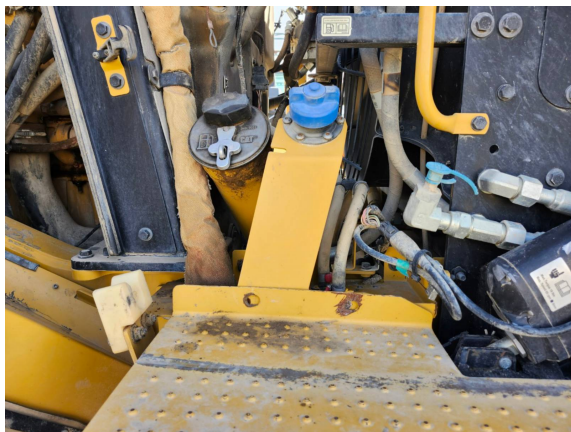
YES

Oil leaks on filter base



Notes - GENERAL APPEARANCE

Dents on bottom of def cage
and missing bolts/bottom of
storage cage



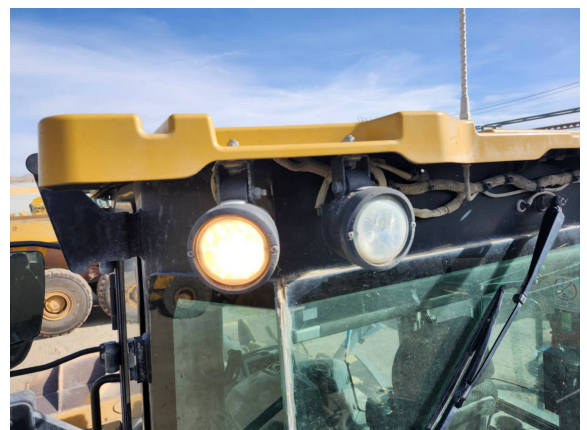
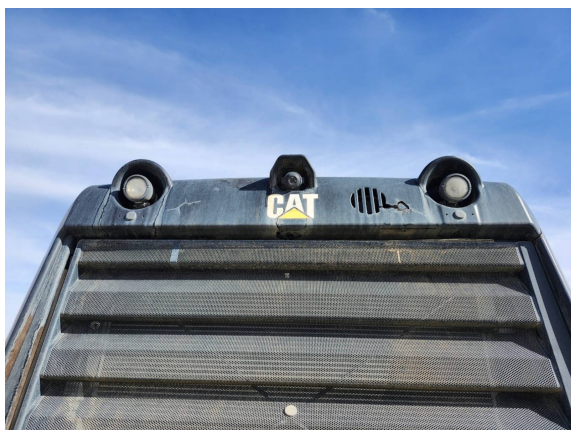
Notes - COOLING SYSTEM

Minor leaks on hose clamps,
from field inspection, machine
been washed



Lighting

Two lights on hood and two on
rear of cab are out

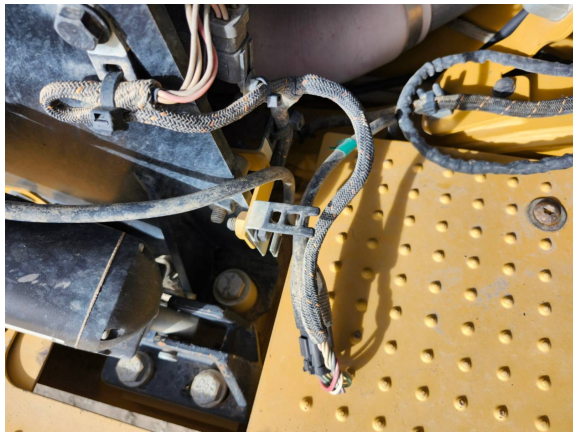




Wiring



Secure harness at right rear



Notes - ELECTRICAL, STARTING AND CHARGING SYSTEM

ET mounting plate broken, plug
not secured



Lift Cylinders

●●
Minor oil traces on the left side



Notes - BRAKE

Very small oil traces on brake accumulator valve solenoid, clean

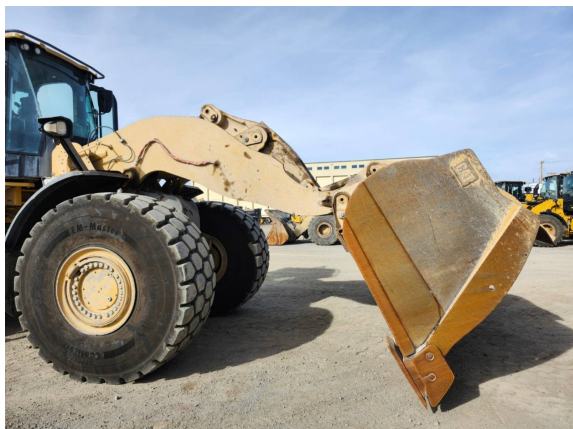


Bucket Spill Guard





Lift Boom
YES



Bucket S/N - BUCKET

Z1A21519 Bucket condition
good for machine hours



Notes - TIRES

79% average tire tread depth



