



2024 CAT  
226D3  
SKID STEER LOADERS

INSPECTION DETAILS

Inspection Type	Trade
Inspection Form	Standard
Inspection #	10263807
Inspection Status	Completed
Created	01/16/26 08:32:33
Updated	01/20/26 15:13:38
Created By	Willis, Joseph
Inspector	Willis, Joseph
Reviewers	Willis, Joseph
Salesperson	Schultis, Derrick R.
Stock #	E212287
Serial #	EK502783
SMU / Hours	352
Location	Eloy , AZ, United States



FEATURES

General

- Air Conditioner
- Lighting
- ROPS - Enclosed
- Coupler Type - Hydraulic
- Product Link
- Heater / Defroster
- Radio

Regulatory

- Emissions Level - EPA - EPA TIER 4f
- Regulatory Status - CAT\_MLIT\_R120\_EU\_Korea
- Emissions Level - EU - EU STAGE V
- Regulatory Status - CAT\_NR\_EPA/CARB
- Regulatory Status - CAT\_China Export
- Ultra Low Sulfur Diesel Fuel

Attachments

- Bucket

CONDITION



Good



Fair



Poor

Approved Repair

GENERAL CONDITION

Body



Frame



General



ET Product Status Report  
Download  
**YES**

Logged / Active Codes  
**NO**

Machine Starts and is Operable  
**YES**

S.O.S. (All Compartments)  
**NO**  
ENGINE AND HYDRAULIC

Visible Oil Leaks  
**NO**

GENERAL APPEARANCE

Bumper



Cab or Canopy



Crankcase Guard / Battery Box



Decals



Scratches on left rear



1

Eng. Enclose Hood / Stack



Fenders



Fuel Tank



Grab Irons



Main Frame Welds



Paint



Plastic



Radiator Grill & Shroud



Sheet Metal



Steps / Ladder



Cleaning Required  
**YES**

SAFETY ITEMS

Back Up Alarm ●●●	Dead Engine Lowering Valve ●●●	Horn ●●●	
ROPS ●●●	Safety Locks / Pins ●●●	Seat Belt / Date ●●●	📷1
Secondary Exit ●●●			
Parking Brake Functioning <b>YES</b>	ROPS Certification Plate <b>YES</b>	📷1	Safety Decals In Place <b>YES</b>
Safety Decals Legible <b>YES</b>			

### OPERATOR STATION

Air Conditioner ●●● 62 ambient temp and 42 vent temp	📷1	Armrests ●●●	Cab Filter / Heat Vent Louvres ●●●
Dash Console ●●●	Door Latches / Hinges / Seals ●● Door seal is ripped	📷1	Floor Boards / Mats ●●●
Gauges ●●●	Headliner ●●●	Heater / Defroster ●●● 61 ambient temp and 124 vent temp	📷1
Hour Meter - GAUGES, OPERATION STATION, CONSOLE ●●●	Hydraulic Controls ●●●	Interior Lights ●●●	📷1
Interior Plastic / Fabric ●●●	Mirrors ●●●	Monitoring Display ●●●	
Pans/Guards ●●●	Radio ●●●	Seat Cushions / Suspension / Type ●●●	

Switches  
●●●

Windows📷4  
●●  
Right side is missing latch. Windows are tinted

Windshield Wipers  
●●●

Current O&MM  
**YES**📷1

Current Parts Manual  
**NO**

Current Safety Manual  
**YES**

Fuel Level - OPERATOR STATION  
1/8

ENGINE

Belts / Pulleys - ENGINE  
●●●

Engine Oil Level / Condition  
●●●

Engine Supports / Mounts  
●●●

Exhaust / Muffler / Stack  
●●●

Fuel Injection System  
●●●

Governor  
●●●

Intake / Air Filters  
●●●

Operating Condition - ENGINE  
●●●

Turbocharger / Blower  
●●●

Blow By  
**NO**

Emissions Decal Legible  
**YES**

Fuel Leaks  
**NO**

Knocking  
**NO**

Oil Leaks  
**NO**

Service Needed  
**NO**  
LAST SERVICE WAS 236 HRS. 352  
PRESENT

Water in Oil  
**NO**

Oil Pressure (H/L/N)  
Normal

Smoke (B/D/L/W)  
Normal


COOLING SYSTEM


Anti-Freeze Level / Color / Condition  
●●●


Belts / Pulleys - COOLING SYSTEM  
●●●


Coolers  
●●●

Fan  


Fan Drive / Type  


Fan Shrouds / Guards  


Hoses & Tubes  


Radiator  


Water Pump  


Compression in Radiator  
**NO**


Coolant Leaks  
**NO**

Oil in Anti-Freeze  
**NO**

Standard Radiator  
**YES**

ELECTRICAL, STARTING AND CHARGING SYSTEM

Alternator  


Batteries / Cables / Master Disconnect  



Lighting  
 5


Starter  


Wiring  


TANDEMS/GEARS/BEARINGS/CHAINS

Front Axle  


Lines / Linkages  


Operating Condition - TANDEMS/GEARS/BEARINGS/CHAINS  



Rear Axle  


Travel Controls  


Travel Motors  



Travel Pumps  


HYDRAULICS

Hose Lines  


Lift Cylinders  


Operating Condition - HYDRAULICS  


Pumps & Valves  


Tank  


Tilt Cylinder  


Leaks - HYDRAULICS  
NO

BUCKET

Bucket Bottom ●●●	3	Bucket Linkage ●●●	Bucket Sides ●●●
Cutting Edges ●●●	3	Loader Frame ●●●	Loader Pins & Bushings ●●●
Quick Coupler ●●●	3		
Bucket Capacity .47 yds 62" WIDE		Bucket S/N TAG	1

TIRES

	Make / Serial#	Tread Depth in 1/32"	% Life Remaining	Recapped	Tread Cuts/Chunks	Side Cuts Section
Left Front	Galaxy beefy baby	32	84	NO	YES	YES
Left Rear	Galaxy beefy baby	31	80	NO	YES	YES
Right Front	Galaxy beefy baby	31	80	NO	YES	YES
Right Rear	Galaxy beefy baby	31	80	NO	YES	YES

Floatation Chains / Tracks  
NO

Spare  
NO

Notes - TIRES  
NON PNEUMATIC

Tire Size - TIRES  
10x16.5

COMMENTS, MISC. REPAIRS, GENERAL REMARKS

comment 1  
INSPECT

comment 2  
NO SERVICE NEEDED

MARKETING PHOTOS (29)

















LINE ITEM PHOTOS (38)

Decals



Scratches on left rear



Seat Belt / Date



ROPS Certification Plate  
YES



---

### Air Conditioner



62 ambient temp and 42 vent temp



---

### Door Latches / Hinges / Seals



Door seal is ripped



---

### Heater / Defroster



61 ambient temp and 124 vent temp





---

## Interior Lights



---

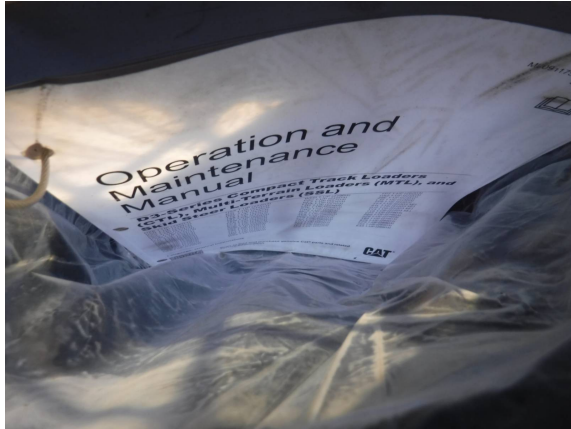
## Windows



Right side is missing latch.  
Windows are tinted



Current O&MM  
YES



Lighting  
●●●







Bucket Bottom



## Cutting Edges



## Quick Coupler







Bucket S/N

TAG



	Make / Serial#	Tread Depth in 1/32"	% Life Remaining	Recapped	Tread Cuts/Chunks	Side Cuts Section
Left Front	Galaxy beefy baby	32	84	<b>NO</b>	<b>YES</b>	<b>YES</b>

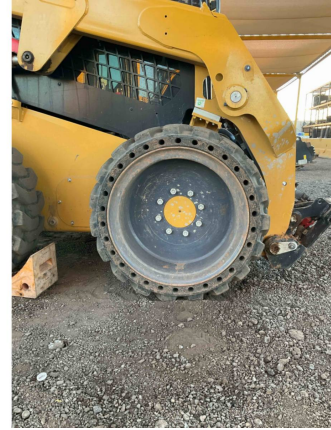




	Make / Serial#	Tread Depth in 1/32"	% Life Remaining	Recapped	Tread Cuts/Chunks	Side Cuts Section
Left Rear	Galaxy beefy baby	31	80	NO	YES	YES



	Make / Serial#	Tread Depth in 1/32"	% Life Remaining	Recapped	Tread Cuts/Chunks	Side Cuts Section
Right Front	Galaxy beefy baby	31	80	<b>NO</b>	<b>YES</b>	<b>YES</b>



	Make / Serial#	Tread Depth in 1/32"	% Life Remaining	Recapped	Tread Cuts/Chunks	Side Cuts Section
Right Rear	Galaxy beefy baby	31	80	<b>NO</b>	<b>YES</b>	<b>YES</b>

