



2019 CAT
D6NXL
TRACK TYPE TRACTORS

INSPECTION DETAILS

Inspection Type	Trade
Inspection Form	Standard
Inspection #	10262283
Inspection Status	Completed
Created	01/09/26 11:15:47
Updated	01/19/26 14:51:37
Created By	Fuentes, David A.
Inspector	Fuentes, David A.
Reviewers	Fuentes, David A.
Salesperson	Schultis, Derrick R.
Transmission Serial #	GM500813
Engine Serial #	D8T53743
Serial #	NJN00553
SMU / Hours	4,108
Location	Eloy , AZ, United States



FEATURES

General

- Air Conditioner
- Engine Enclosures
- Mirrors
- ROPS - Enclosed
- Air Suspension Seat
- Hand and Foot Control
- Radio - AM FM Radio
- Steering Type - Joystick
- Diff Steer
- Lighting
- Ripper - Multi-Shank

CONDITION

Good

Fair

Poor

Approved Repair

GENERAL CONDITION

Body <div><div></div><div></div><div></div></div>	Frame <div><div></div><div></div><div></div></div>	General <div><div></div><div></div><div></div></div>
ET Product Status Report Download YES	Logged / Active Codes NO	Machine Starts and is Operable YES
Visible Oil Leaks NO		

GENERAL APPEARANCE

Battery Box <div><div></div><div></div><div></div></div>	Belly Pans <div><div></div><div></div><div></div></div> <div>Belly pans have been removed for cleaning</div>	Bumper <div><div></div><div></div><div></div></div>
Cab or Canopy <div><div></div><div></div><div></div></div> <div>Cab</div>	Decals <div><div></div><div></div><div></div></div>	Engine Enclosures <div><div></div><div></div><div></div></div>
Fenders <div><div></div><div></div></div> <div>Left and right sides fenders are bent with hole punched through it,</div>	<div><div></div></div> 2Fuel Tank <div><div></div><div></div><div></div></div>	Grab Irons <div><div></div><div></div><div></div></div>
Hood <div><div></div><div></div><div></div></div>	Main Frame Welds <div><div></div><div></div><div></div></div>	Paint <div><div></div><div></div><div></div></div>
Pre-Cleaner Bowl <div><div></div><div></div><div></div></div>	Radiator Grill <div><div></div><div></div></div> <div>Left side has one rung bent</div>	<div><div></div></div> 1 <div><div><div>Sheet Metal</div><div><div></div><div></div></div><div>Left side access compartment is missing rod</div></div><div><div></div></div>1</div>
Steps / Ladder <div><div></div><div></div><div></div></div>	Transmission Guard <div><div></div><div></div><div></div></div>	

Cleaning Required
NO

SAFETY ITEMS

Back Up Alarm ●●●	Camera(s) ●●●	Horn ●●●
ROPS ●●●	Seat Belt / Date ●● No seat belts tag	Secondary Exit ●●●
Parking Brake Functioning YES	ROPS Certification Plate YES	Safety Decals In Place YES
Safety Decals Legible YES	Service Brakes Functioning YES	

OPERATOR STATION

Air Conditioner ●●● Vent temperature 46° Ambient temperature 48°	Armrests ●● Left lower cushion material is coming loose	Cab Filter / Heat Vent Louvres ●●●
Dash Console ●●●	Door Latches / Hinges / Seals ●●●	Floor Boards / Mats ●●●
Gauges ●●●	Headliner ●●●	Heater / Defroster ●●● Vent temperature 100° Ambient temperature 48°
Hour Meter - GAUGES, OPERATION STATION, CONSOLE ●●● 4108 Hours	Hydraulic Controls ●●●	Interior Lights ●●●
Interior Plastic / Fabric ●●●	Mirrors ●●●	Monitoring Display ●●●

Radio
●●●

Seat Cushions / Suspension / Type
●●●
Air

Switches
●●●

Transmission Controls
●●●

Windows
●●●

Windshield Wipers
●●
Wiper blades need replaced

Current O&MM
YES
OMM damaged

📷1

Current Parts Manual
NO

Current Safety Manual
NO
No safety manual

Diesel Exhaust Fluid (DEF) Level - 📷1
OPERATOR STATION
99%

Fuel Level - OPERATOR STATION 📷1
90%

ENGINE

Belts / Pulleys - ENGINE
●●●

Engine Oil Level / Condition
●●●

Engine Supports / Mounts
●●●

Exhaust / Muffler / Stack
●●●

Fuel Injection System
●●●

Governor
●●●

Intake / Air Filters
●●●

Operating Condition - ENGINE
●●●

Turbocharger / Blower
●●●

Apparent Other Engine Damage
NO

Blow By
NO

Emissions Decal Legible
NO

Fuel Leaks
NO

Has Engine been rebuilt?
NO

Knocking
NO

Oil Leaks
NO

Pre Lube System
NO

Service Needed
YES

Water in Oil
NO

Hours On Engine
4108 Hours



Oil Pressure (H/L/N)
Normal

Smoke Color (B/D/L/W)
Normal

EMISSIONS

Aftertreatment Heat Shields /
Guards
●●●

DEF Lines / Wiring
●●●

Diesel Exhaust Fluid (DEF) Tank
●●●

Aftertreatment System Codes
NO

Leaks / Type
NO

COOLING SYSTEM

Anti-Freeze Level / Color /
Condition
●●●

Belts / Pulleys - COOLING
SYSTEM
●●●

Coolers
●●●

Fan
●●●

Fan Drive / Type
●●●
Belt

Fan Shrouds / Guards
●●●

Hoses / Tubes
●●●

Radiator
●●●

Water Pump
●●●

Compression in Radiator
NO

Coolant Leaks
NO

Oil in Anti-Freeze
NO

Standard Radiator
YES

ELECTRICAL, STARTING AND CHARGING SYSTEM

Alternator
●●●

Batteries / Cables

●●

Battery hold down is loose

Starter
●●●

Wiring
●●●

Work Lights
●●●

Active Codes
NO

TRANSMISSION

Case ●●●	Controls - TRANSMISSION ●●●	Cooler ●●●
Lines / Fittings - TRANSMISSION ●●●	Operating Condition - TRANSMISSION ●●●	Pump - TRANSMISSION ●●●
Seals ●●●	Temp / Pressure Gauges ●●●	Torque Converter (Stall Speed) ●●●
Transmission - Forward Shifts ●●●	Transmission - Reverse Shifts ●●●	Valves ●●●
Leaks - TRANSMISSION NO	Multi Velocity Shift Program YES	Transmission - Noisy YES Load clunking coming from with in transmission (Need to verify noisy)

STEERING

Differential Steer ●●●	Differential Steering Controls ●●●	Steering Linkage ●●●
Steering Operating Condition ●●●	Steering Valve ●●●	

BRAKE

Parking Brake Operation ●●●	Service Brake Operation ●●●	
Holding What Gear? All		

HYDRAULICS

Angle Cylinder ●●●	Control Linkage - HYDRAULICS ●●●	Hose Lines ●●●
-----------------------	-------------------------------------	-------------------

Hydraulic Valves
●●●

Lift Cylinders
●●●

Overall Operating Condition
●●●

Pumps
●●●

Tank / Sight Glass / Cap
●●●

Tilt Cylinder
●●●

Leaks - HYDRAULICS
NO

BLADE

Back of Blade
●●●

Cutting Edge & Bits
●●●

📷2 Face / Moldboard 📷1
●●●

Pins
●●●

Push Arm
●●●

Trunnions
●●●

RIPPER / GRAPPLE / WINCH

Beam / Frame
●●●

Lines / Fittings - RIPPER /
GRAPPLE / WINCH
●●●

Ripper Lift Cylinder
●●●

Shanks / Get
●●
Ripper tips are worn short

📷3

UNDERCARRIAGE

	Measurement (L)	% Worn (L)	Total Potential Hours (L)	Measurement (R)	% Worn (R)	Total Potential Hours (R)
Carrier Rollers Front	7.10	4		7.10	4	
Idlers Front	.96	4		.96	4	
Links	4.62	15		4.62	15	
Pins & Bushings (External)	2.50	24		2.50	24	
Segments	8.30	18		8.30	18	
Track Roller 3	.62	5		.62	5	

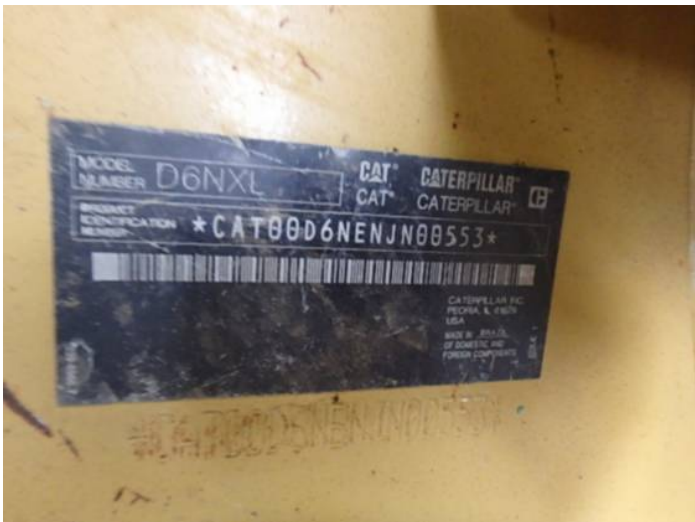
Track Shoe Grouser Height	2.16	23	2.16	23
---------------------------------	------	----	------	----

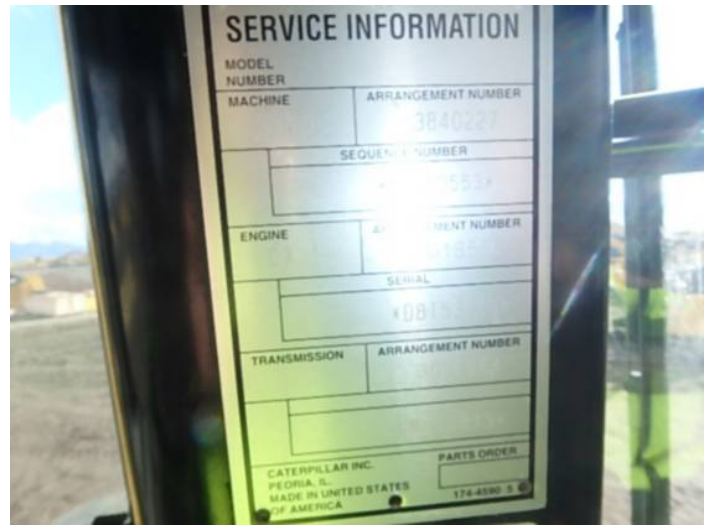
Guiding Guard - Left ●●●	Guiding Guard - Right ●●●	Track Frame - Left ●●●
Track Frame - Right ●●●		
Pins & Bushings Turned? NO		
Bottom Rollers Good	Carrier Rollers Good	Equalizer Bar Center pin has some movement
Idlers / Type Good	Link / Brand / Part Number 1733596	Segments Good
Track Shoes Width / Type Good		

FINAL DRIVES

Housings, Left ●●●	Housings, Right ●●●	Planetaries / Differential, Left ●●●
Planetaries / Differential, Right ●●●		

MARKETING PHOTOS (26)









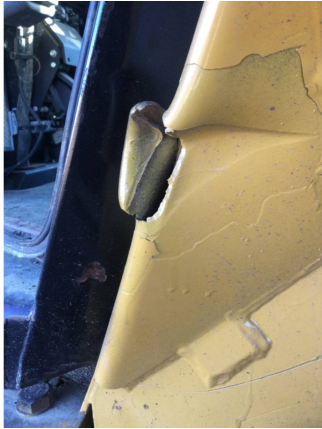


LINE ITEM PHOTOS (21)

Fenders



Left and right sides fenders are bent with hole punched through it,



Radiator Grill



Left side has one rung bent



Sheet Metal



Left side access compartment is missing rod



ROPS Certification Plate
YES



Safety Decals In Place
YES



Air Conditioner



Vent temperature 46° Ambient
temperature 48°



Cab Filter / Heat Vent Louvres



Hour Meter - GAUGES,
OPERATION STATION,
CONSOLE

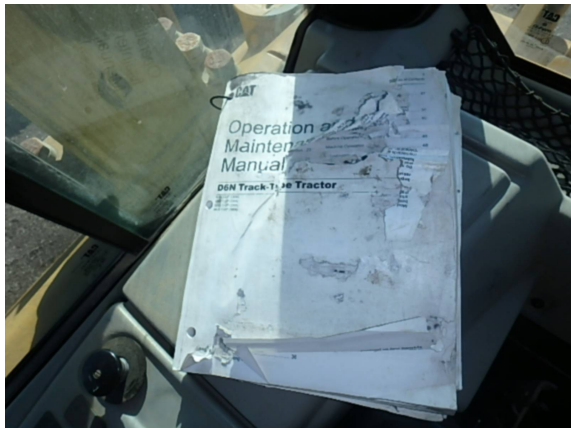


4108 Hours



Current O&MM
YES

OMM damaged



Diesel Exhaust Fluid (DEF) Level
- OPERATOR STATION

99%



Fuel Level - OPERATOR STATION

90%



Batteries / Cables



Battery hold down is loose



Cutting Edge & Bits

●●●



Face / Moldboard

●●●



Shanks / Get

●●

Ripper tips are worn short





Hours On Engine

4108 Hours

