



2015 CAT
279D
COMPACT TRACK LOADER

INSPECTION DETAILS

Inspection Type	Purchase
Inspection Form	Standard
Inspection #	10260836
Inspection Status	Inspected
Created	12/31/25 10:31:49
Updated	01/13/26 15:51:18
Created By	Fuller, Scott U.
Inspector	Fuller, Scott U.
Reviewers	Fuller, Scott U.
Salesperson	Heath, Jason
Last Preventative Maintenance	Sep 26, 2025
Stock #	E212870
Serial #	GTL01976
SMU / Hours	3,898
Location	Henderson, NV, United States



FEATURES

General

- 2 Speed Travel
- Coupler Type - Hydraulic
- Product Link
- Air Conditioner
- Heater / Defroster
- ROPS - Enclosed
- Auxiliary Hydraulics Flow - Standard Flow
- Lighting
- Self Leveling

Regulatory

- Emissions Level - EPA - Tier4
- Emissions Level - EU - Stage3b
- Emissions Level - Japan - 2013 Regulation
- Emissions Level - Switzerland - Switzerland

Technology

- Pilot Control

CONDITION



Good



Fair



Poor

Approved Repair

GENERAL CONDITION

Body



Frame




General



ET Product Status Report
Download
YES

Logged / Active Codes
YES
Has logged fault codes.

2 Machine Starts and is Operable
YES

S.O.S. (All Compartments)
NO
Taken during previous
inspection. Engine oil viscosity is
low.



GENERAL APPEARANCE

Bumper



Client has welded guarding on the
front of machine, which is damaged.



Cab or Canopy



Counterweight



Crankcase Guard / Battery Box



Decals



Missing all make and model decals.



Eng. Enclose Hood / Stack



Dent in engine door grill.



Fuel Tank



Grab Irons



Main Frame Welds



Paint



Paint has various scrapes and gouges.

Plastic



Radiator Grill & Shroud



Grill support strut is disconnected,
missing clip.



Sheet Metal



Missing access door and latch to hyd.
fill cap.



Steps / Ladder



Q/C step is bent/damaged. Step at cab
entrance is slightly bent.



Cleaning Required
YES
Needs washed and detailed.

SAFETY ITEMS

Back Up Alarm
●●●

Dead Engine Lowering Valve
●●●

Horn
●●●

ROPS
●●●

Safety Locks / Pins
●●●

Seat Belt / Date
●
Expired

1

Secondary Exit
●●●

Parking Brake Functioning
YES

ROPS Certification Plate
YES

Safety Decals In Place
NO
Various decals missing or damaged.

OPERATOR STATION

Air Conditioner
●●●
Cooled to 45 degrees at 53 ambient temp.

1

Armrests
●●●
Right joystick console will not slide.

Cab Filter / Heat Vent Louvres
●●●

Dash Console
●●●

Door Latches / Hinges / Seals
●●●

Floor Boards / Mats
●●●

Gauges
●●●

Headliner
●●●

Heater / Defroster
●●●
Warmed to 108 at 53 ambient temp

1

Hour Meter - GAUGES,
OPERATION STATION, CONSOLE
●●●

Hydraulic Controls
●●
Joystick handles are covered with plastic. Needs removed and cleaned.

1

Interior Lights
●●●

Interior Plastic / Fabric
●●
Door latch trim cover is cracked. Brack in left joystick console trim

2

Mirrors
●●●

Monitoring Display
●●●

Pans/Guards
●●●

Seat Cushions / Suspension / Type
●●
Heater switch is broken. Right joystick console will not slide.

Switches
●●●

Windows
●●
Front door polycarbonate window has some deep gouges.

Windshield Wipers
●●
Wiper motor inop. Washers spray in to cab. Wiper motor trim cover is broken at corner.

Current O&MM
NO
OMM pouch has holes worn through. Missing OMM

Current Parts Manual
NO

Current Safety Manual
YES
Torn

ENGINE

Belts / Pulleys - ENGINE
●●●

Engine Oil Level / Condition
●●●

Engine Supports / Mounts
●●●

Exhaust / Muffler / Stack
●●●

Fuel Injection System
●●●

Governor
●●●

Intake / Air Filters
●●●

Operating Condition - ENGINE
●●●

Turbocharger / Blower
●●●

Apparent Other Engine Damage
NO

Blow By
NO

Emissions Decal Legible
YES

Fuel Leaks
NO

Knocking
NO

Oil Leaks
NO

Service Needed
NO
Most recent pm service performed. 9/26/25 at 3735 hours.

Water in Oil
NO

Oil Pressure (H/L/N)
Normal

Smoke Color (B/D/L/W)
Normal

EMISSIONS

Aftertreatment Heat Shields / Guards ●●●	Diesel Particulate Filter (DPF) Condition / Service Hours ●●●
Aftertreatment System Codes YES	Leaks / Type NO

COOLING SYSTEM

Anti-Freeze Level / Color / Condition ●●●	Belts / Pulleys - COOLING SYSTEM ●●●	Coolers ●●●
Fan ●●●	Fan Drive / Type ●●●	Fan Shrouds / Guards ●●●
Hoses / Tubes ●●●	Radiator ●●●	Water Pump ●●●
Compression in Radiator NO	Coolant Leaks NO But has some residue at block drain valve. Should clean and recheck.	📷1 Oil in Anti-Freeze NO
Standard Radiator YES		

ELECTRICAL, STARTING AND CHARGING SYSTEM

Alternator ●●●	Batteries / Cables / Master Disconnect ●●●	Lighting ●●●
Starter ●●●	Wiring ●●●	
Block Heater YES No cord		

TANDEM/GEARS/BEARINGS/CHAINS

Front Torsion Bars <div><div></div><div></div><div></div></div>	Housings, Left <div><div></div><div></div><div></div></div>	Housings, Right <div><div></div><div></div><div></div></div>
Lines / Linkages <div><div></div><div></div><div></div></div>	Operating Condition <div><div></div><div></div><div></div></div>	Planetaries / Differential, Left <div><div></div><div></div><div></div></div>
Planetaries / Differential, Right <div><div></div><div></div><div></div></div>	Rear Torsion Bars <div><div></div><div></div><div></div></div>	Torsion Axles <div><div></div><div></div><div></div></div>
Travel Controls <div><div></div><div></div></div> Joystick covered with plastic- Needs removed and cleaned	Travel Motors <div><div></div><div></div><div></div></div>	Travel Pumps <div><div></div><div></div><div></div></div>
Magnetic Plugs Removed & Checked? NO		

HYDRAULICS

Hoses / Lines <div><div></div><div></div><div></div></div>	Lift Cylinders <div><div></div><div></div><div></div></div>	Overall Operating Condition - HYDRAULICS <div><div></div><div></div><div></div></div>
Pump & Valves <div><div></div><div></div><div></div></div>	Tank <div><div></div><div></div><div></div></div>	Tilt Cylinder <div><div></div><div></div><div></div></div>
Leaks - HYDRAULICS NO		

BUCKET

Loader Frame <div><div></div><div></div><div></div></div>	Loader Pins & Bushings <div><div></div><div></div><div></div></div> Some minor play in tilt cyl top q/c pins and loader to q/c	Quick Coupler <div><div></div><div></div><div></div></div>
Notes - BUCKET No bucket on machine at time of inspection		

UNDERCARRIAGE

	Measurement (L)	% Worn (L)	Total Potential Hours (L)	Measurement (R)	% Worn (R)	Total Potential Hours (R)
Tread Depth	19	59		19	59	
Idlers		Roller		Roller Frame		
Sprocket		Track / Belt Condition				
		Various cuts in belts. Tracks are slightly loose.				
Notes		Track / Belt Tread Thickness				
450MM-Trojan Tracks		450MM-Trojan Tracks				

COMMENTS, MISC. REPAIRS, GENERAL REMARKS

comment 1	
Inspection performed 12/30/25	
at 3898 hours	

MARKETING PHOTOS (12)





Decals

● Missing all make and model decals.



Eng. Enclose Hood / Stack

●● Dent in engine door grill.



Radiator Grill & Shroud

●●
Grill support strut is disconnected, missing clip.



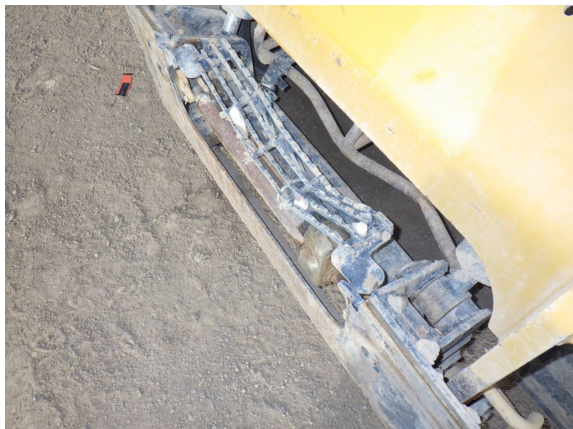
Sheet Metal

●●
Missing access door and latch to hyd. fill cap.



Steps / Ladder

●●
Q/C step is bent/damaged. Step at cab entrance is slightly bent.



Seat Belt / Date



Expired



Air Conditioner



Cooled to 45 degrees at 53 ambient temp.



Heater / Defroster



Warmed to 108 at 53 ambient temp



Hydraulic Controls

Joystick handles are covered with plastic. Needs removed and cleaned.



Interior Plastic / Fabric

Door latch trim cover is cracked. Brack in left joystick console trim



Seat Cushions / Suspension / Type

Heater switch is broken. Right joystick console will not slide.



Windows



Front door polycarbonate window has some deep gouges.



Windshield Wipers



Wiper motor inop. Washers spray in to cab. Wiper motor trim cover is broken at corner.



Current O&MM

NO

OMM pouch has holes worn through. Missing OMM



Current Safety Manual

YES

Torn



Service Needed

NO

Most recent pm service performed. 9/26/25 at 3735 hours.



Coolant Leaks

NO

But has some residue at block drain valve. Should clean and recheck.



Track / Belt Condition



Various cuts in belts. Tracks are slightly loose.



comment 1

Inspection performed 12/30/25
at 3898 hours

