



2016 CAT
950M
WHEEL LOADER

INSPECTION DETAILS

Inspection Type	Marketing
Inspection Form	Standard
Inspection #	10212549
Inspection Status	Completed
Created	06/27/25 12:27:06
Updated	07/18/25 14:55:10
Created By	Calderas, Marco
Inspector	Calderas, Marco
Reviewers	Calderas, Marco
Salesperson	Schultis, Derrick R.
Stock #	E195079
Serial #	EMB02430
SMU / Hours	8,787
Location	Eloy, AZ, United States



FEATURES

General

- Air Conditioner
- Coupler Type - Hydraulic
- Lift - Standard
- Product Link
- ROPS - Enclosed
- Counterweight
- Differential Lock
- Lighting
- Radio - AM FM Radio
- Coupler - Quick
- Engine Enclosures
- Mirrors
- Ride Control

Regulatory

- Ultra Low Sulfur Diesel Fuel

Attachments

- Bucket
- Forks - Block

CONDITION

Good

Fair

Poor

Approved Repair

GENERAL CONDITION

Body <div><div></div><div></div><div></div></div>	Frame <div><div></div><div></div><div></div></div>	General <div><div></div><div></div><div></div></div>
ET Product Status Report Download YES	Logged / Active Codes NO	Machine Starts and is Operable YES
S.O.S. (All Compartments) NO	Tires are Aired Up and Drivable YES	Visible Oil Leaks NO

GENERAL APPEARANCE

Cab or Canopy <div><div></div><div></div><div></div></div>	Counterweight <div><div></div><div></div><div></div></div> <div>Has been repaired.</div>	<div><div></div>1</div> Crankcase Guard / Battery Box <div><div></div><div></div><div></div></div>
Decals <div><div></div><div></div><div></div></div>	Differential Supports <div><div></div><div></div><div></div></div>	Eng. Enclose Hood / Stack <div><div></div><div></div><div></div></div>
Fenders <div><div></div><div></div></div> <div>Front fenders are cracked</div>	<div><div></div>9</div> Fiberglass <div><div></div><div></div><div></div></div>	Front Frame <div><div></div><div></div><div></div></div>
Fuel Tank <div><div></div><div></div><div></div></div>	Grab Irons <div><div></div><div></div></div> <div>Right rear hand holds are cracked and bent</div>	<div><div></div>5</div> Guards / Screens <div><div></div><div></div></div> <div>Belly pans are bent.</div> <div><div></div>1</div>
Paint <div><div></div><div></div><div></div></div> <div>Has been painted</div>	<div><div></div>1</div> Plastic <div><div></div><div></div><div></div></div>	Pre-Cleaner Bowl <div><div></div><div></div><div></div></div>
Radiator Grill & Shroud <div><div></div><div></div><div></div></div>	Rear Frame <div><div></div><div></div><div></div></div>	Sheet Metal <div><div></div><div></div></div> <div>Right rear is bent upward.</div> <div><div></div>1</div>

Steps / Ladder



Left side rear is missing belts and steps. Has bent brackets. Left side cab entry belts damaged and has step welded in place

SAFETY ITEMS

Back Up Alarm



Camera(s)



Horn



ROPS



Seat Belt / Date



Secondary Exit



Parking Brake Functioning

YES

ROPS Certification Plate

YES



Safety Decals Legible

YES

Safety Locks / Pins

YES

Missing pin keepers on frame lock



Service Brakes Functioning

YES

OPERATOR STATION

Air Conditioner



Ambient temp at 109.2F and vent temp at 53.4F



Armrests



Cab Filter / Heat Vent Louvres



Dash Console



Door Latches / Hinges / Seals



Door strut is blown and seal is torn. Door pocket is cracked.(Door does not lock shut right) almost have to slam it to get it close



Floor Boards / Mats



Gauges



Headliner



Heater / Defroster



Hour Meter



Hydraulic Controls



Interior Lights



Inoperable.



Interior Plastic / Fabric ●●●	Mirrors ●●●	Monitoring Display ●●●
Radio ●● Missing antenna	📷1 Seat Cushions / Suspension / Type ●● RIPPED CUSHION	📷1 Switches ●●●
Transmission Controls ●●●	Visor / Sunshade ●● Damaged. Will not hold	📷1 Windows ●●●
Windshield Wipers ●● Washer pumps are inoperable	📷1	
Current O&MM NO	Current Parts Manual NO	Current Safety Manual NO
Fuel Level 1/4		

ENGINE

Belts / Pulleys ●●●	Engine Oil Level / Condition ●●●	Engine Supports / Mounts ●●●
Exhaust / Muffler / Stack ●●●	Governor ●●●	Intake / Air Filters ●●●
Operating Condition ●●●	Turbocharger / Blower ●●●	
Blow By NO	Fuel Leaks NO	Knocking NO
Oil Leaks NO	Water in Oil NO	
Oil Pressure (H/L/N) Normal	Smoke Color (B/D/L/W) Normal	

EMISSIONS

Aftertreatment Heat Shields / Guards ●●●	DEF Lines / Wiring ●●●	Diesel Exhaust Fluid (DEF) Tank ●●●
Diesel Particulate Filter (DPF) Condition / Service Hours ●●●		
Aftertreatment System Codes NO	Leaks / Type NO	

COOLING SYSTEM

Anti-Freeze Level / Color / Condition ●●● Red	Belts / Pulleys - COOLING SYSTEM ●●●	Coolers ●●●
Fan ●●●	Fan Drive / Type ●●●	Fan Shrouds / Guards ●●●
Hoses / Tubes ●●●	Radiator ●●●	Water Pump ●●●
Compression in Radiator NO	Coolant Leaks NO	Standard Radiator YES

ELECTRICAL, STARTING AND CHARGING SYSTEM

Alternator ●●●	📷1 Batteries / Cables / Master Disconnect ●●●	Wiring ●●●
Work Lights ●●●		
Signal Lights YES		

TRANSMISSION

Case <div><div></div><div></div><div></div></div>	Controls - TRANSMISSION <div><div></div><div></div><div></div></div>	Cooler <div><div></div><div></div><div></div></div>
Drive Shaft <div><div></div><div></div><div></div></div>	Leaks - TRANSMISSION <div><div></div><div></div><div></div></div>	Lines / Fittings - TRANSMISSION <div><div></div><div></div><div></div></div>
Operating Condition - TRANSMISSION <div><div></div><div></div><div></div></div>	Pump - TRANSMISSION <div><div></div><div></div><div></div></div>	Seals <div><div></div><div></div><div></div></div>
Torque Converter - TRANSMISSION <div><div></div><div></div><div></div></div>	Transmission <div><div></div><div></div><div></div></div>	Transmission - Forward Shifts <div><div></div><div></div><div></div></div>
Transmission - Reverse Shifts <div><div></div><div></div><div></div></div>	Universal Joints - TRANSMISSION <div><div></div><div></div><div></div></div>	
Transmission - Noisy NO		

STEERING

Articulate P & B <div><div></div><div></div><div></div></div>	Hand Metering Unit <div><div></div><div></div><div></div></div>	Lines / Fittings - STEERING <div><div></div><div></div><div></div></div>
Pumps <div><div></div><div></div><div></div></div>	Steering Cylinder <div><div></div><div></div></div> <div>Has movement at pins and bushings both cylinders rod and barrel ends</div>	<div>📷2</div> Steering Linkage <div><div></div><div></div><div></div></div>
Steering Valves / Pumps <div><div></div><div></div><div></div></div>	Steering Wheel Tilt / Extend <div><div></div><div></div><div></div></div>	Valves <div><div></div><div></div><div></div></div>

BRAKE

Accumulators <div><div></div><div></div><div></div></div>	Brake Drums / Rotors <div><div></div><div></div><div></div></div>	Control Valve <div><div></div><div></div><div></div></div>
Hydraulic Pumps <div><div></div><div></div><div></div></div>	Lines <div><div></div><div></div><div></div></div>	Lines / Tubes <div><div></div><div></div><div></div></div>

Parking Brake - BRAKE
●●●

Pedal
●●●

Pump - BRAKE
●●●

Type (Wet, Dry)
●●●

Holds In Park
YES

Leaks - BRAKE
NO

Holding What Gear?
3rd

HYDRAULICS

Accumulator Charge - Ride Control
●●●

Bucket & Hoist Kickout
●●●

Control Linkage
●●●


Hose Lines
●●●


Hoses & Tubes - HYDRAULICS
●●●

Lift Cylinders
●●● 2

Overall Operating Condition
●●●


Pumps & Valves
●●●

Tank
●● 1
Has residue under tank area at right side behind transmission.

Tilt Cylinder
●●● 1

Leaks - HYDRAULICS
NO




ATTACHMENTS / WORK TOOLS

Operating Condition - ATTACHMENTS / WORK TOOLS
●● 2
MISSING LOCKS


Forks
YES
MISSING FORK LOCKS AND
HARDWARE

7

BUCKET

Bucket Bottom <div><div></div><div></div><div></div></div>	Bucket Floor <div><div></div><div></div><div></div></div>	Bucket Linkage - BUCKET <div><div></div><div></div><div></div></div>
Bucket Sides <div><div></div><div></div><div></div></div>	Loader Frame <div><div></div><div></div><div></div></div>	Loader Pins & Bushings <div><div></div><div></div><div></div></div>
Quick Coupler <div><div></div><div></div><div></div></div>	Segments <div><div></div><div></div><div></div></div> <div>Worn</div>	<div>3</div> Teeth / Adapters <div><div></div><div></div><div></div></div> <div>Worn</div> <div>2</div>
High Lift NO	Standard Lift YES	
Bucket Capacity Unknown	Bucket S/N - BUCKET 108"	Notes - BUCKET Bent spill guard <div>3</div>

FINAL DRIVES

Differentials <div><div></div><div></div><div></div></div>	Front Axle <div><div></div><div></div><div></div></div>	Front Final Drives <div><div></div><div></div><div></div></div>
Oscillation <div><div></div><div></div><div></div></div>	Rear Axle <div><div></div><div></div><div></div></div>	Rear Final Drives <div><div></div><div></div><div></div></div>
Trunion <div><div></div><div></div></div> <div>Has movement</div>	<div>1</div> Wheel Lugs & Rims - FINAL DRIVES <div><div></div><div></div><div></div></div>	
Leaks - FINAL DRIVES NO		

TIRES

Make / Serial#	Tread Depth in 1/32"	% Life Remaining	Recapped	Tread Cuts/Chunks	Side Cuts Section
----------------	-------------------------	---------------------	----------	----------------------	----------------------

Left Front	Bridgestone	12	26	NO	YES	YES
Left Rear	Road guider	34	90	NO	YES	YES
Right Front	Advance	29	58	NO	YES	YES
Right Rear	Road guider	33	88	NO	YES	YES

Spare
NO

Average Life Remaining - TIRES
65.5

Tire Size - TIRES
23.5R25

MARKETING PHOTOS (28)









LINE ITEM PHOTOS (73)

Counterweight



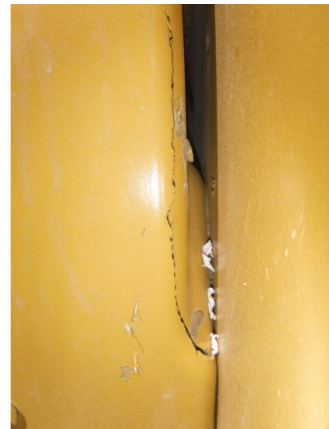
Has been repaired.



Fenders



Front fenders are cracked





Grab Irons

●●
Right rear hand holds are cracked and bent





Guards / Screens



Belly pans are bent.



Paint



Has been painted



Sheet Metal



Right rear is bent upward.



Steps / Ladder



Left side rear is missing belts and steps. Has bent brackets.

Left side cab entry belts damaged and has step welded in place

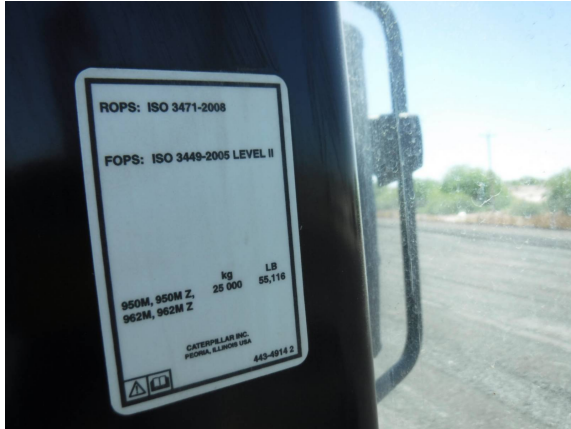




Camera(s)
●●●



ROPS Certification Plate
YES



Safety Locks / Pins

YES

Missing pin keepers on frame
lock



Air Conditioner



Ambient temp at 109.2F and
vent temp at 53.4F



Door Latches / Hinges / Seals



Door strut is blown and seal is torn. Door pocket is cracked.(Door does not lock shut right) almost have to slam it to get it close



Interior Lights



Inoperable.



Radio



Missing antenna



Seat Cushions / Suspension /

Type



RIPPED CUSHION



Visor / Sunshade



Damaged. Will not hold



Windshield Wipers



Washer pumps are inoperable



Alternator



Steering Cylinder



Has movement at pins and bushings both cylinders rod and barrel ends



Lift Cylinders



Tank



Has residue under tank area at right side behind transmission.



Tilt Cylinder



Operating Condition -
ATTACHMENTS / WORK TOOLS

MISSING LOCKS

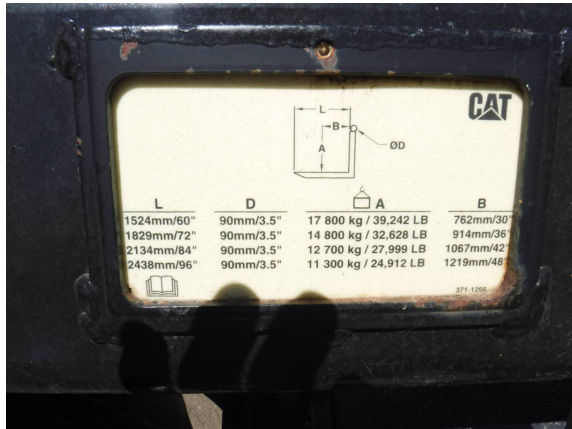
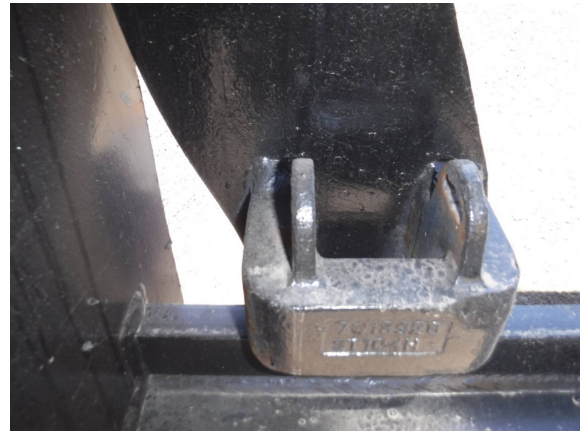


Forks

YES

MISSING FORK LOCKS AND
HARDWARE





Segments



Worn





Teeth / Adapters



Worn



Trunion



Has movement



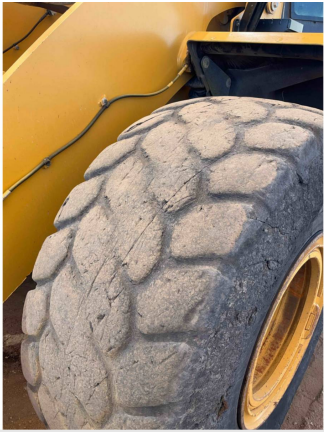
Notes - BUCKET

Bent spill guard



	Make / Serial#	Tread Depth in 1/32"	% Life Remaining	Recapped	Tread Cuts/Chunks	Side Cuts Section
Left Front	Bridgestone	12	26	NO	YES	YES

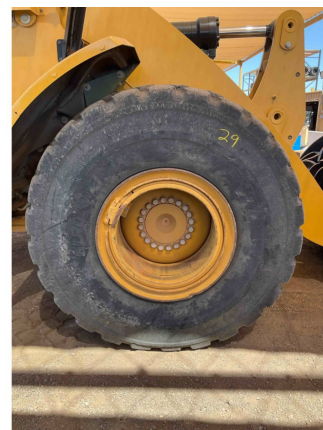




	Make / Serial#	Tread Depth in 1/32"	% Life Remaining	Recapped	Tread Cuts/Chunks	Side Cuts Section
Left Rear	Road guider	34	90	NO	YES	YES



	Make / Serial#	Tread Depth in 1/32"	% Life Remaining	Recapped	Tread Cuts/Chunks	Side Cuts Section
Right Front	Advance	29	58	NO	YES	YES



	Make / Serial#	Tread Depth in 1/32"	% Life Remaining	Recapped	Tread Cuts/Chunks	Side Cuts Section
Right Rear	Road guider	33	88	NO	YES	YES



