



2022 CAT
74504
ARTICULATED TRUCKS

INSPECTION DETAILS

Inspection Type	Trade
Inspection Form	Standard
Inspection #	10266466
Inspection Status	Completed
Created	01/27/26 13:46:02
Updated	02/03/26 09:03:32
Created By	Willis, Joseph
Inspector	Willis, Joseph
Reviewers	Willis, Joseph
Salesperson	Schultis, Derrick R.
Stock #	E196889
Serial #	3T603174
SMU / Hours	4,294
Location	Eloy, AZ, United States



FEATURES

General

- Air Conditioner
- Mirrors
- Rear View Camera
- Air Suspension Seat
- Product Link
- Retarder
- Lighting
- Radio - Bluetooth
- ROPS - Enclosed

Regulatory

- Emissions Level - EPA - EPA TIER 4f
- Ultra Low Sulfur Diesel Fuel
- Emissions Level - Japan - STEP 4 FINAL
- Regulatory Status - EPA / ARB / MLIT / S. Korea

CONDITION

Good

Fair

Poor

Approved Repair

GENERAL CONDITION

Body <div><div></div><div></div><div></div></div>	Frame <div><div></div><div></div><div></div></div>	General <div><div></div><div></div><div></div></div>
ET Product Status Report Download YES	Logged / Active Codes NO	Machine Starts and is Operable YES
S.O.S. (All Compartments) NO ENGINE, TRANSMISSION, AND HYDRAULIC OIL.	Tires are Aired Up and Drivable YES	Visible Oil Leaks NO

GENERAL APPEARANCE

Battery Box <div><div></div><div></div><div></div></div>	Bumper <div><div></div><div></div><div></div></div>	Cab or Canopy <div><div></div><div></div><div></div></div>
Crankcase Guard / Transmission Guard <div><div></div><div></div><div></div></div>	Decals <div><div></div><div></div></div> Peeling and scratched	<div><div></div></div> 4 Fenders <div><div></div><div></div></div> Right front extension is cracked. Inner section has bent tab. <div><div></div></div> 3
Fiberglass <div><div></div><div></div><div></div></div>	Front Frame Welds <div><div></div><div></div><div></div></div>	FRONT MUD FLAPS <div><div></div></div> Has been ripped off. <div><div></div></div> 2
<div><div>Fuel Tank <div><div></div><div></div></div> Quick fuel adapter cover gas broken bolts</div><div><div></div></div>1</div>	Grab Irons <div><div></div><div></div><div></div></div>	Hood / Actuator <div><div></div><div></div><div></div></div>
Paint <div><div></div><div></div></div> Slight fade and scratches <div><div></div></div> 4	Plastic (Exterior) <div><div></div><div></div><div></div></div>	Radiator Grill <div><div></div></div> Left side is cracked <div><div></div></div> 1

Rear Frame Welds



Sheet Metal



Right front lower forward fender section is dented. Can be straightened



2

Steps / Ladder



Both sides had bent hanger brackets. Can be straightened



2

Cleaning Required

YES

Notes - GENERAL APPEARANCE  2

Front mud flaps on tractor are ripped off

SAFETY ITEMS

Back Up Alarm



Camera(s)



1

Horn



Inoperable

Rig Saver



Safety Locks / Pins



3

Seat Belt / Date Driver



1



NOVEMBER 2021 OUTDATED

Seat Belt / Date Passenger



NOVEMBER 2021 OUTDATED



1

Secondary Exit



Parking Brake Functioning

YES

ROPS

YES

ROPS Certification Plate

YES



1

Safety Decals In Place

YES

Safety Decals Legible

YES

Service Brakes Functioning

YES

OPERATOR STATION

Air Conditioner



1

Armrests



Cab Filter / Heat Vent Louvres



Dash Console



Cracked bezel at display



1

Door Latches / Hinges / Seals



Floor Boards / Mats



Gauges



Glass



Headliner



Heater / Defroster



Hour Meter - GAUGES,
OPERATION STATION, CONSOLE



Interior Lights



Interior Plastic / Fabric



Mirrors



Left side has cracked mirror missing
hardware



Monitoring Display



Pans/Guards



Radio



Seat Cushions / Suspension /
Type



Switches



Transmission Controls



Visor / Sunshade



Windows



Windshield Wipers



Clogged. Pumps work will not spray.
NEEDS HOSES.



Current O&MM

NO

Current Parts Manual

NO

Current Safety Manual

NO

Hydraulic Controls

YES

ENGINE

Belts / Pulleys - ENGINE



Engine Oil Level / Condition



Engine Supports / Mounts



Exhaust / Muffler / Stack



Fuel Injection System



Governor



Intake / Air Filters



Operating Condition - ENGINE



Turbocharger / Blower



Blow By

NO

Emissions Decal Legible

YES

Fuel Leaks

NO

Knocking
NO

Oil Leaks
NO

Water in Oil
NO

Notes - ENGINE
Has oil around breather hose.
Clamp is tight.



Oil Pressure (H/L/N)
Normal

Smoke Color (B/D/L/W)
Normal

EMISSIONS

Aftertreatment Heat Shields /
Guards
●●●

Diesel Exhaust Fluid (DEF) Tank
●●●

Diesel Particulate Filter (DPF)
Condition / Service Hours
●●●

Aftertreatment System Codes
NO

Leaks / Type
NO

COOLING SYSTEM

Anti-Freeze Level / Color /
Condition
●●●

Belts / Pulleys - COOLING
SYSTEM
●●●

Coolers
●●●

Fan
●●●

Fan Drive / Type
●●●

Fan Shrouds / Guards
●●●

Hoses & Tubes
●●●

Radiator
●●●

Water Pump
●●●

Compression in Radiator
NO

Coolant Leaks
NO

Oil in Anti-Freeze
NO

Standard Radiator
YES

ELECTRICAL, STARTING AND CHARGING SYSTEM

Alternator
●●●

Batteries / Cables / Master
Disconnect
●●●

Product Link / Condition
●●●

<div>Starter</div> <div><div><div></div><div></div><div></div></div></div>	<div>Wiring</div> <div><div><div></div><div></div><div></div></div></div>	<div>Work Lights</div> <div><div><div></div><div></div></div></div> <div>Left rear cab entry light is inop</div>	<div></div> <div>6</div>
<div>Active Codes</div> <div>NO</div>	<div>Jump Start Terminal</div> <div>YES</div>	<div>Signal Lights</div> <div>YES</div>	
<div>Notes - ELECTRICAL, STARTING AND CHARGING SYSTEM</div> <div>Head light guards are dented. Can be straightened</div> <div></div> <div>2</div>			

TRANSMISSION


<div>Case</div> <div><div><div></div><div></div><div></div></div></div>	<div>Controls</div> <div><div><div></div><div></div><div></div></div></div>	<div>Cooler</div> <div><div><div></div><div></div><div></div></div></div>
<div>Lines / Fittings - TRANSMISSION</div> <div><div><div></div><div></div><div></div></div></div>	<div>Overall Operating Condition - TRANSMISSION</div> <div><div><div></div><div></div><div></div></div></div>	<div>Pump - TRANSMISSION</div> <div><div><div></div><div></div><div></div></div></div>
<div>Retarder</div> <div><div><div></div><div></div><div></div></div></div>	<div>Seals</div> <div><div><div></div><div></div><div></div></div></div>	<div>Torque Converter</div> <div><div><div></div><div></div><div></div></div></div>
<div>Transmission - Forward Shifts</div> <div><div><div></div><div></div><div></div></div></div>	<div>Transmission - Reverse Shifts</div> <div><div><div></div><div></div><div></div></div></div>	<div>Valves</div> <div><div><div></div><div></div><div></div></div></div>
<div>Auto Shift</div> <div>YES</div>	<div>Leaks - TRANSMISSION</div> <div>NO</div>	<div>Transmission - Noisy</div> <div>NO</div>


STEERING


<div>Articulation P&B</div> <div><div><div></div><div></div><div></div></div></div>	<div>Hand Metering Unit</div> <div><div><div></div><div></div></div></div> <div>Leaks at lower hose. Line is tight</div> <div></div> <div>1</div>	<div>Lines / Fittings - STEERING</div> <div><div><div></div><div></div><div></div></div></div>
<div>Oscillation Hitch</div> <div><div><div></div><div></div><div></div></div></div>	<div>Overall Operating Condition</div> <div><div><div></div><div></div><div></div></div></div>	<div>Steering Column / Tilt</div> <div><div><div></div><div></div><div></div></div></div>
<div>Steering Cylinder</div> <div><div><div></div><div></div><div></div></div></div>	<div>Steering Linkage</div> <div><div><div></div><div></div><div></div></div></div>	<div>Steering Pump</div> <div><div><div></div><div></div><div></div></div></div>



Wheel


SUSPENSION


Center A-Frame




Center Bearings



Center Rubber Springs


Center Torsion Bars  2
Both bushings are damaged and cracking on pan hard bar

Front A-Frame



Front Bearings




Front Torsion Bars  2
Both bushings are worn and cracking in pan hard bar


Left Suspension Beam


Rear A-Frame


Rear Bearings



Rear Rubber Springs



Rear Torsion Bars  2
Both bushings are dry and cracking on pan hard bar

Right Suspension Beam


Suspension Cylinders



BRAKE

Accumulators - BRAKE



Brake Drums / Rotors


Compressor



Control Valve



Hydraulic Cooler



Lines


Parking Brake Operation


Pedal


Pump - BRAKE


Service Brake Operation


Type (Wet, Dry)


Leaks - BRAKE
NO

HYDRAULICS

Hydraulic Valves ●●●	Lift Cylinders ●●●	Pump ●●●
Tank / Sight Glass / Cap ●●●		
Leaks - HYDRAULICS YES PILOT LINE TO HMU LEAKING. QUOTED WITH HMU.		

TRUCK BODY

Bed Pads ●●●	Bottom ●●●	Flaps ●●●
Hinge Pins & Brackets ●●●	Operating Condition - TRUCK BODY ●●●	Ribs and Stringers ●●●
Sides ●●●	Spill Guard ●●● Dented center and left front	2
Side Boards NO		
Truck Body Notes Spill guard dented no tailgate		

FINAL DRIVES

Center Axle ●●●	Center Final Drives ●●●	Drive Shaft ●●●
Front Axle - FINAL DRIVES ●●●	Front Final Drives ●●●	Rear Axle ●●●
Rear Final Drives ●●●	Transfer Case / Dropbox ●●●	Universal Joints ●●●



TIRES

	Make / Serial#	Tread Depth in 1/32"	% Life Remaining	Recapped	Tread Cuts/Chunks	Side Cuts Section
Left Center	Bridgestone	52	84	NO	YES	YES
Left Front	Bridgestone	54	86	NO	YES	YES
Left Rear	Bridgestone	52	84	NO	YES	YES
Right Center	Bridgestone	50	80	NO	YES	YES
Right Front	Bridgestone	55	90	NO	YES	YES
Right Rear	Bridgestone	51	82	NO	YES	YES

Bias
NO

Radial
YES

Average Life Remaining - TIRES
88%

Tire Size - TIRES
29.5R25

COMMENTS, MISC. REPAIRS, GENERAL REMARKS

comment 1
SERVICE

comment 2
INSPECT

MARKETING PHOTOS (32)













LINE ITEM PHOTOS (71)

Decals



Peeling and scratched



Fenders



Right front extension is cracked. Inner section has bent tab.





FRONT MUD FLAPS



Has been ripped off.



Fuel Tank



Quick fuel adapter cover gas
broken bolts



Paint



Slight fade and scratches



Radiator Grill



Left side is cracked



Sheet Metal



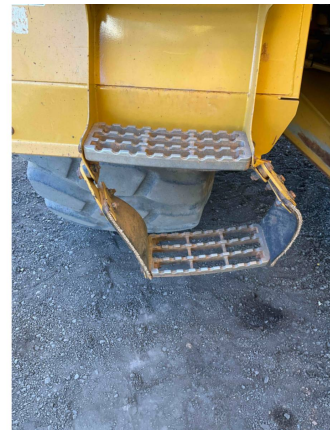
Right front lower forward fender section is dented. Can be straightened



Steps / Ladder



Both sides had bent hanger brackets. Can be straightened



Camera(s)



Safety Locks / Pins



Seat Belt / Date Driver

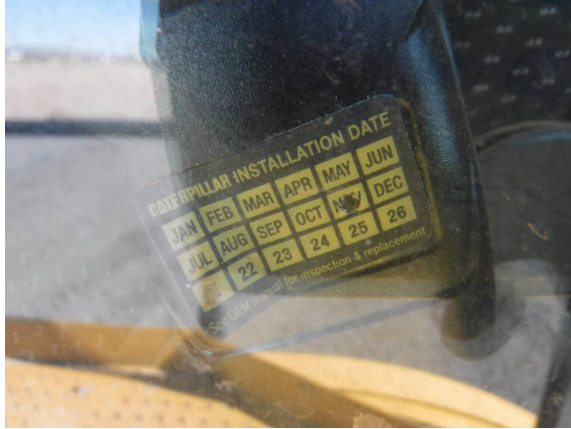


NOVEMBER 2021 OUTDATED



Seat Belt / Date Passenger

●
NOVEMBER 2021 OUTDATED



ROPS Certification Plate

YES



Air Conditioner

●●●



Dash Console



Cracked bezel at display



Heater / Defroster



Mirrors



Left side has cracked mirror
missing hardware



Windshield Wipers

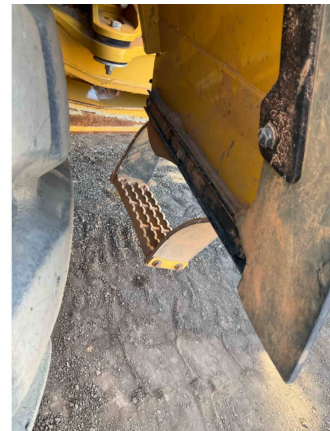
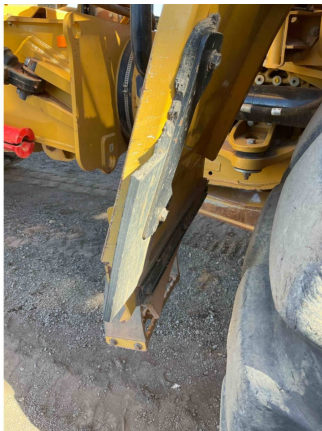


Clogged. Pumps work will not spray. NEEDS HOSES.



Notes - GENERAL APPEARANCE

Front mud flaps on tractor are ripped off



Notes - ENGINE

Has oil around breather hose.
Clamp is tight.



Work Lights

●●
Left rear cab entry light is inop



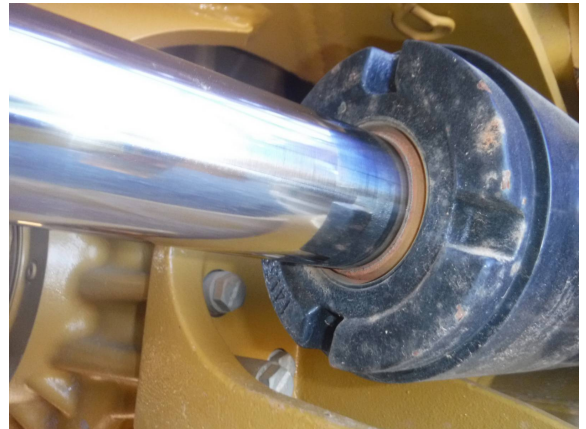
Hand Metering Unit



Leaks at lower hose. Line is tight



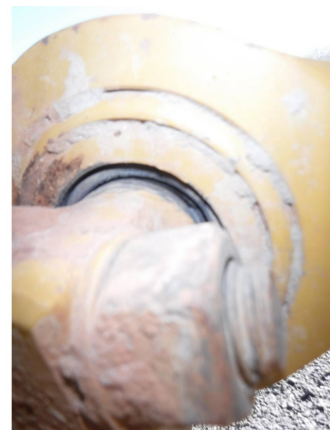
Steering Cylinder



Center Torsion Bars



Both bushings are damaged and cracking on pan hard bar



Front Torsion Bars



Both bushings are worn and cracking in pan hard bar



Rear Torsion Bars



Both bushings are dry and cracking on pan hard bar



Spill Guard



Dented center and left front

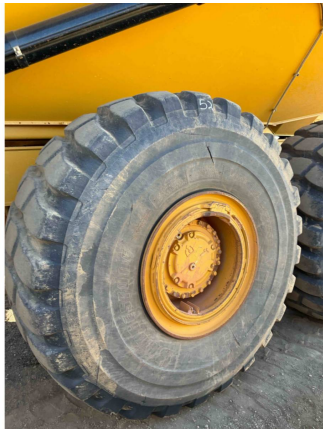


Notes - ELECTRICAL, STARTING
AND CHARGING SYSTEM

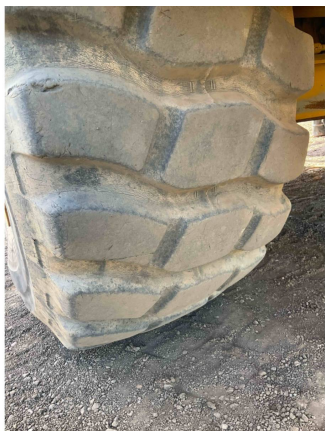
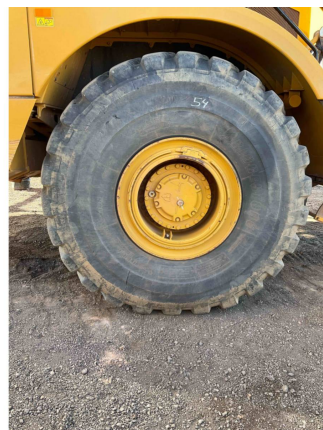
Head light guards are dented.
Can be straightened



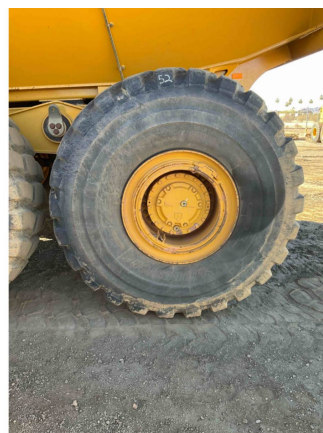
	Make / Serial#	Tread Depth in 1/32"	% Life Remaining	Recapped	Tread Cuts/Chunks	Side Cuts Section
Left Center	Bridgestone	52	84	NO	YES	YES



	Make / Serial#	Tread Depth in 1/32"	% Life Remaining	Recapped	Tread Cuts/Chunks	Side Cuts Section
Left Front	Bridgestone	54	86	NO	YES	YES

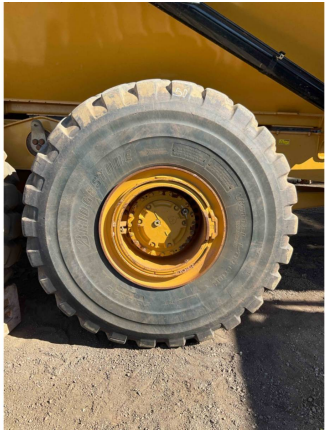


	Make / Serial#	Tread Depth in 1/32"	% Life Remaining	Recapped	Tread Cuts/Chunks	Side Cuts Section
Left Rear	Bridgestone	52	84	NO	YES	YES

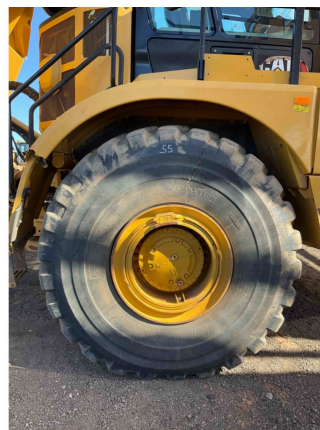
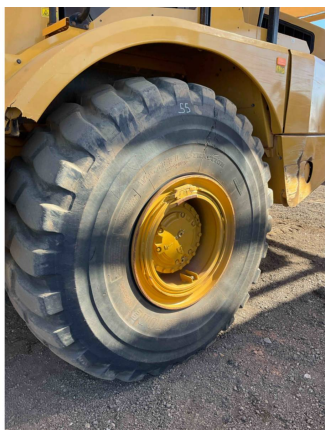




	Make / Serial#	Tread Depth in 1/32"	% Life Remaining	Recapped	Tread Cuts/Chunks	Side Cuts Section
Right Center	Bridgestone	50	80	NO	YES	YES



	Make / Serial#	Tread Depth in 1/32"	% Life Remaining	Recapped	Tread Cuts/Chunks	Side Cuts Section
Right Front	Bridgestone	55	90	NO	YES	YES



	Make / Serial#	Tread Depth in 1/32"	% Life Remaining	Recapped	Tread Cuts/Chunks	Side Cuts Section
Right Rear	Bridgestone	51	82	NO	YES	YES

