



2024 CAT
98014
WHEEL LOADER

INSPECTION DETAILS

Inspection Type	Trade
Inspection Form	Standard
Inspection #	10267739
Inspection Status	Completed
Created	02/02/26 12:40:55
Updated	02/04/26 14:59:50
Created By	Calderas, Marco
Inspector	Calderas, Marco
Reviewers	Calderas, Marco
Salesperson	Schultis, Derrick R.
Serial #	WFX01421
SMU / Hours	2,737
Location	Eloy, AZ, United States



FEATURES

General

- Air Conditioner
- Counterweight
- Lift - Standard
- Product Link
- ROPS - Enclosed
- Auto Lube
- Differential Lock
- Lighting
- Radio - AM FM Radio
- Steering Type - Joystick
- Auto Shift
- Engine Enclosures
- Mirrors
- Ride Control

Regulatory

- Emissions Level - EPA - EPA TIER 4f
- Emissions Level - Japan - STEP 4 FINAL
- Ultra Low Sulfur Diesel Fuel

Attachments

- Bucket

CONDITION



Good



Fair



Poor

Approved Repair

GENERAL CONDITION

Body



Frame



General



ET Product Status Report
Download



YES

Has a logged event as auto lube
is low. (re-fill on pm- service)

Logged / Active Codes
NO

Machine Starts and is Operable
YES

S.O.S. (All Compartments)

YES

Engine , hydraulics and
transmission.

Tires are Aired Up and Drivable
YES

Visible Oil Leaks
YES

GENERAL APPEARANCE

Bumper



Cab or Canopy



Counterweight



Crankcase Guard / Battery Box



Decals



Differential Supports



Eng. Enclose Hood / Stack



Engine rear right hood has a dent.
And right center enclose hydraulic
door compartment (door is bent)

Fenders



Front Frame



Fuel Tank



Grab Irons



Guards / Screens



Paint



Pre-Cleaner Bowl



Radiator Grill & Shroud



Rear Frame



Sheet Metal



Steps / Ladder



Cleaning Required
YES

SAFETY ITEMS

Back Up Alarm ●●●	Camera(s) ●●●	📷1	Horn ●●●
ROPS ●●●	Seat Belt / Date ●● Expires 12/26	📷1	Secondary Exit ●●●
Parking Brake Functioning YES	ROPS Certification Plate YES		Safety Decals In Place YES
Safety Decals Legible YES	Safety Locks / Pins YES		Service Brakes Functioning YES

OPERATOR STATION

Air Conditioner ●●● Vent temp at 46.4°	📷1	Armrests ●●●	Cab Filter / Heat Vent Louvres ●●●
Dash Console ●●●		Door Latches / Hinges / Seals ●●●	Floor Boards / Mats ●●●
Gauges ●●●		Headliner ●●●	Heater / Defroster ●●● Vent temp at 132.9°
Hour Meter ●●●		Hydraulic Controls ●●●	Interior Lights ●●●
Interior Plastic / Fabric ●●●		Mirrors ●●●	Monitoring Display ●●●
Pans/Guards ●●●		Radio ●●●	Seat Cushions / Suspension / Type ●●●

Switches ●●●		Transmission Controls ●●●		Visor / Sunshade ●●●	
Windows ●●●		Windshield Wipers ●●●			
Current O&MM YES	📷1	Current Parts Manual NO		Current Safety Manual YES	📷1

ENGINE

Belts / Pulleys ●●●	📷1	Engine Oil Level / Condition ●●●		Engine Supports / Mounts ●●●	
Exhaust / Muffler / Stack ●●●		Fuel Injection System ●●●		Governor ●●●	
Intake / Air Filters ●● Part of service	📷1	Operating Condition ●●●		Turbocharger / Blower ●●●	
Blow By NO		Emissions Decal Legible YES		Fuel Leaks NO	
Knocking NO		Oil Leaks NO		Pre Lube System YES	
Service Needed YES		Water in Oil NO			
Oil Pressure (H/L/N) Normal		Smoke Color (B/D/L/W) Normal			

EMISSIONS

Aftertreatment Heat Shields / Guards ●●●		DEF Lines / Wiring ●●●		Diesel Exhaust Fluid (DEF) Tank ●●●	
---	--	---------------------------	--	--	--

Diesel Particulate Filter (DPF)
Condition / Service Hours
●●●

Aftertreatment System Codes
NO

COOLING SYSTEM

Anti-Freeze Level / Color /
Condition
●●●

Coolers
●●●

Fan
●●●

Fan Shrouds / Guards
●●●

Hoses / Tubes
●●●

Radiator
●●●

Water Pump
●●●

Compression in Radiator
NO

Coolant Leaks
NO

Oil in Anti-Freeze
NO

Standard Radiator
YES

ELECTRICAL, STARTING AND CHARGING SYSTEM

Alternator
●●●

Batteries / Cables / Master
Disconnect
●●●

Starter / Type
●●●

Wiring
●●●

Work Lights📷1
●
Front lights do not work

Block Heater
NO

Ether Aid
NO

Jump Start Terminal
YES

Signal Lights
YES

TRANSMISSION

Case <div><div></div><div></div><div></div></div>	Controls - TRANSMISSION <div><div></div><div></div><div></div></div>	Cooler <div><div></div><div></div><div></div></div>
Drive Shaft <div><div></div><div></div><div></div></div>	Leaks - TRANSMISSION <div><div></div><div></div><div></div></div>	Lines / Fittings - TRANSMISSION <div><div></div><div></div><div></div></div>
Operating Condition - TRANSMISSION <div><div></div><div></div><div></div></div>	Pump - TRANSMISSION <div><div></div><div></div><div></div></div>	Seals <div><div></div><div></div><div></div></div>
Temp / Pressure Gauges <div><div></div><div></div><div></div></div>	Torque Converter - TRANSMISSION <div><div></div><div></div><div></div></div>	Transmission <div><div></div><div></div><div></div></div>
Transmission - Forward Shifts <div><div></div><div></div><div></div></div>	Transmission - Reverse Shifts <div><div></div><div></div><div></div></div>	Universal Joints - TRANSMISSION <div><div></div><div></div><div></div></div>
Transmission - Noisy NO		

STEERING

Articulate P & B <div><div></div><div></div><div></div></div>	Hand Metering Unit <div><div></div><div></div><div></div></div>	Lines / Fittings - STEERING <div><div></div><div></div><div></div></div>
Pumps <div><div></div><div></div><div></div></div>	Steering Cylinder <div><div></div><div></div><div></div></div>	Steering Linkage <div><div></div><div></div><div></div></div>
Steering Valves / Pumps <div><div></div><div></div><div></div></div>	Steering Wheel Tilt / Extend <div><div></div><div></div><div></div></div>	Supplemental Steer <div><div></div><div></div><div></div></div>
Valves <div><div></div><div></div><div></div></div>		

BRAKE

Accumulator <div><div></div><div></div><div></div></div>	Accumulators <div><div></div><div></div><div></div></div>	Brake Drums / Rotors <div><div></div><div></div><div></div></div>
---	--	--

Brake Linkage
●●●

Compressor
●●●

Control Valve
●●●

Hydraulic Pumps
●●●

Leaks - BRAKE
●●●

Lines
●●●

Lines / Tubes
●●●

Master Cylinder
●●●

Parking Brake - BRAKE
●●●

Pedal
●●●

Pump - BRAKE
●●●

Type (Wet, Dry)
●●●

Holds In Park
YES

Leaks - BRAKE
NO

Holding What Gear?
3rd gear

HYDRAULICS

Accumulator Charge - Ride Control
●●●

Bucket & Hoist Kickout
●●●

Control Linkage
●●●

Hose Lines
●●●

Hoses & Tubes - HYDRAULICS
●●●

Lift Cylinders
●●●

Multi Purpose Cylinders
●●●

Overall Operating Condition
●●●

Pumps & Valves
●●●

Tank
●●●

Tilt Cylinder
●●●

Leaks - HYDRAULICS
NO

BUCKET

Bucket / Multi Purpose Cylinder
●●●

Bucket Bottom
●●●

Bucket Floor
●●●

Bucket Linkage - BUCKET
●●●

Bucket P & B
●●●

Bucket Sides
●●●

Cutting Edges
●●●

Loader Frame
●●●

Loader Pins & Bushings
●●●

Segments
●●●

High Lift
NO

Standard Lift
YES

Bucket Capacity
7211 lbs, 7.75 yd3 137 inches

Bucket S/N - BUCKET
X1E20444



1

FINAL DRIVES

Differentials
●●●

Front Axle
●●●

Front Final Drives
●●●

Oscillation
●●●

Rear Axle
●●●

Rear Final Drives
●●●

Trunion
●●●

Wheel Lugs & Rims - FINAL
DRIVES
●●●

Leaks - FINAL DRIVES
NO

TIRES

	Make / Serial#	Tread Depth in 1/32"	% Life Remaining	Recapped	Tread Cuts/Chunks	Side Cuts Section
Left Front	Bridgestone	34 32/nds	65.09	NO	YES	YES
Left Rear	Bridgestone	36 32/nds	67.92	NO	YES	YES
Right Front	Bridgestone	33 32/nds	62.26	NO	YES	YES

Spare
NO

Average Life Remaining - TIRES
65.09 %

Tire Size - TIRES
29.5R25

COMMENTS, MISC. REPAIRS, GENERAL REMARKS

comment 1 INSPECTION	comment 2 PM-SERVICE
-------------------------	-------------------------

MARKETING PHOTOS (31)











CAT[®] CATERPILLAR[®] 
CAT[®] CATERPILLAR[®]

MODEL	980
BUILD	14A

PRODUCT IDENTIFICATION NUMBER *CAT00980HWFx01421*



R61905

CATERPILLAR INC.
PEORIA, IL 61629
USA
MADE IN CHINA
OF DOMESTIC AND
FOREIGN COMPONENTS

1 5042-915

ISSUE 1

CAT[®]
HOLT OF CALIFORNIA

LINE ITEM PHOTOS (26)

ET Product Status Report

Download

YES

Has a logged event as auto lube
is low. (re-fill on pm- service)

Logged Diagnostic Codes [Diagnostic Clock = 2735 hours] - Transmission 980 (WLC01890)				
Code	Description	Occ.	First	Last
No Logged Diagnostic Codes				
Logged Event Codes [Diagnostic Clock = 2735 hours] - Transmission 980 (WLC01890)				
Code	Description	Occ.	First	Last
E234 (1)	Low Auto Lube Grease Level	126	318	2727
Active Diagnostic Codes - Transmission 980 (WLC01890)				
Code	Description			

Eng. Enclose Hood / Stack



Engine rear right hood has a dent. And right center enclose hydraulic door compartment (door is bent)



Camera(s)



Seat Belt / Date



Expires 12/26



Air Conditioner



Vent temp at 46.4°



Heater / Defroster

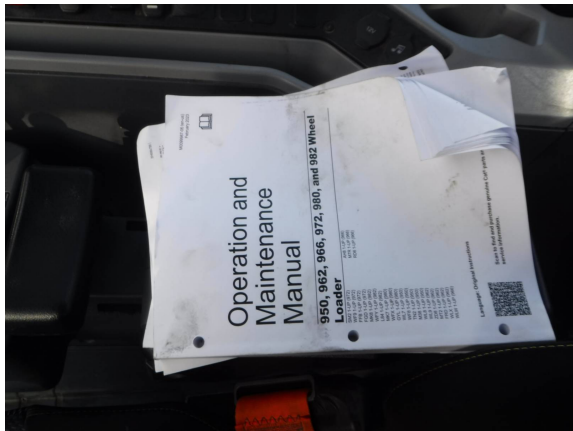


Vent temp at 132.9°



Current O&MM

YES



Current Safety Manual

YES



Belts / Pulleys



Intake / Air Filters



Part of service



Work Lights

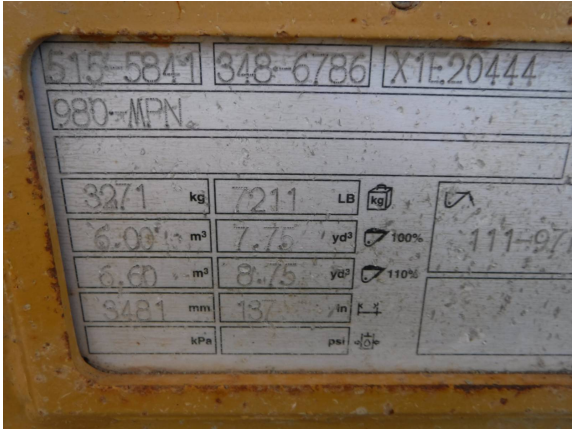


Front lights do not work



Bucket S/N - BUCKET

X1E20444



	Make / Serial#	Tread Depth in 1/32"	% Life Remaining	Recapped	Tread Cuts/Chunks	Side Cuts Section
Left Front	Bridgestone	34 32/nds	65.09	NO	YES	YES



	Make / Serial#	Tread Depth in 1/32"	% Life Remaining	Recapped	Tread Cuts/Chunks	Side Cuts Section
Left Rear	Bridgestone	36 32/nds	67.92	NO	YES	YES



	Make / Serial#	Tread Depth in 1/32"	% Life Remaining	Recapped	Tread Cuts/Chunks	Side Cuts Section
Right Front	Bridgestone	33 32/nds	62.26	NO	YES	YES





	Make / Serial#	Tread Depth in 1/32"	% Life Remaining	Recapped	Tread Cuts/Chunks	Side Cuts Section
Right Rear	Bridgestone	35 32/nds	66.04	NO	YES	YES

