



2013 CAT
627H
WHEEL TRACTOR SCRAPERS

INSPECTION DETAILS

Inspection Type	Trade
Inspection Form	Standard
Inspection #	10265742
Inspection Status	Completed
Created	01/23/26 07:06:07
Updated	01/26/26 08:03:16
Created By	Willis, Joseph
Inspector	Willis, Joseph
Reviewers	Willis, Joseph
Salesperson	Schultis, Derrick R.
Stock #	E212600
Serial #	DBW00323
SMU / Hours	5,775
Location	Eloy, AZ, United States



FEATURES

General

- Air Conditioner
- Lighting
- Radio
- Tire Size
- Cushion Hitch
- Mirrors
- Retarder
- Guard, Transmission
- Push Pull
- ROPS - Enclosed

Regulatory

- Emissions Level - EPA - EPA TIER 4i
- Emissions Level - EU - Stage IIIB
- Ultra Low Sulfur Diesel Fuel

CONDITION

Good

Fair

Poor

Approved Repair

GENERAL APPEARANCE

Bumper ●● Has dents in front bumper	2	Cab or Canopy ●●●	Differential Supports ●●●	
Front Crankcase Guard / Batter ●●●	Front Engine Enclose Hood / St ●● Missing hardware	2	Front Fenders ●● Has small rip in both sides. Right front needs flap bracket straightened and has ripped liner in front of tire.	3
Front Frame ●●●	Front Pre-Cleaner Bowl ●●●		Front Radiator Grill & Shroud ●●●	
Front Sheet Metal ●● Dented at right front.	1	Grab Irons ●● Bent at rear left and right sides at top section	2	Paint ●●●
Rear Crankcase Guard / Batter ●●●	Rear Engine Enclose Hood / Sta ●●●		Rear Fenders ●●●	
Rear Frame ●● Has cracks on rear hook gussets	3	Rear Fuel Tank ●●●	Rear Pre-Cleaner Bowl ●●● Pulled off for shipping.	1
Rear Radiator Grill & Shroud ●●●	Rear Sheet Metal ●●●		Steps / Ladder ●●●	
Cleaning Required YES	S.O.S. Taken NO			

SAFETY ITEMS

Horn <div><div><div></div><div></div><div></div></div></div>	
--	--

ROPS YES	1	Safety Decals In Place YES	Safety Decals Legible YES
OPERATOR STATION			
Air Conditioner 71 ambient temp and 49 vent temp	1	Dash Console	Door Latches Door seal has cuts
EMS Panel / Warnings		Floor Boards	Gauges
Glass/Mirrors		Heater 78 ambient temp and 109 vent temp	1 Interior Lights
Meter		Seat Belt	1 Seat Cushion / Arm Rest Seat back has small hole
SEAT SUSPENSION		Switches	2 Windshield Wipers Front and rear blades are dry cracking. Front washer inop. Rear washer is wo
Back Up Alarm YES		Current O&MM NO	Current Parts Manual NO
Current Safety Manual NO		ROPS Certification Plate YES	1

FRONT ENGINE			
Air Cleaners - FRONT ENGINE		Belts / Pulleys - FRONT ENGINE	Engine Supports - FRONT ENGINE
Exhaust / Muffler - FRONT ENGINE		Fuel Injection System - FRONT ENGINE	Governor - FRONT ENGINE

Operating Condition - FRONT
ENGINE
●●●

Turbocharger - FRONT ENGINE
●●●

Blow By - FRONT ENGINE
NO

Compression in Radiator -
FRONT ENGINE
NO

Fluid Levels OK? - FRONT
ENGINE
YES

Knocking - FRONT ENGINE
NO

Oil Leaks - FRONT ENGINE
NO

Water In Oil - FRONT ENGINE
NO

Anti-Freeze Color - FRONT
ENGINE
Red

Oil Pressure - FRONT ENGINE
Normal

Smoke - FRONT ENGINE
Normal

REAR ENGINE

Air Cleaners - REAR ENGINE
●●●

Belts / Pulleys - REAR ENGINE
●●●

Engine Supports - REAR ENGINE
●●●

Exhaust / Muffler - REAR ENGINE
●●●

Fuel Injection System - REAR
ENGINE
●●●

Governor - REAR ENGINE
●●●

Operating Condition - REAR
ENGINE
●●●

Turbocharger - REAR ENGINE
●●●

Blow By - REAR ENGINE
NO

Compression in Radiator - REAR
ENGINE
NO

Fluid Levels OK? - REAR ENGINE
YES

Knocking - REAR ENGINE
NO

Oil Leaks - REAR ENGINE
YES
Not dripping. Has residue at
filter area.


📷1 Water In Oil - REAR ENGINE
NO

Anti-Freeze Color - REAR ENGINE
Red


Oil Pressure - REAR ENGINE
Normal


Smoke - REAR ENGINE
Normal

FRONT COOLING SYSTEM


Coolers - FRONT COOLING
SYSTEM


Fan - FRONT COOLING SYSTEM


Fan Drive - FRONT COOLING
SYSTEM



Hoses - FRONT COOLING
SYSTEM


Radiator - FRONT COOLING
SYSTEM



Water Pumps - FRONT COOLING
SYSTEM



Leaks - FRONT COOLING SYSTEM
NO


REAR COOLING SYSTEM


Coolers - REAR COOLING
SYSTEM


Fan - REAR COOLING SYSTEM



Fan Drive - REAR COOLING
SYSTEM


Hoses - REAR COOLING SYSTEM



Radiator - REAR COOLING
SYSTEM



Water Pumps - REAR COOLING
SYSTEM




Leaks - REAR COOLING SYSTEM
NO

Notes - REAR COOLING SYSTEM 1
Radiator needs washed out. Will
need to have grill unbolted and
cleaned out.


FRONT ELECTRICAL, STARTING & CHARGING SYSTEM


Alternator - FRONT ELECTRICAL,
STARTING & CHARGING SYSTEM


Batteries / Cables - FRONT
ELECTRICAL, STARTING &
CHARGING SYSTEM


Lighting - FRONT ELECTRICAL, 3
STARTING & CHARGING SYSTEM


Pre-Heater - FRONT ELECTRICAL,
STARTING & CHARGING SYSTEM


Starter - FRONT ELECTRICAL,
STARTING & CHARGING SYSTEM



Wiring - FRONT ELECTRICAL,
STARTING & CHARGING SYSTEM


Ether Aid - FRONT ELECTRICAL,
STARTING & CHARGING SYSTEM
YES

REAR ELECTRICAL, STARTING & CHARGING SYSTEM

Alternator - REAR ELECTRICAL,
STARTING & CHARGING SYSTEM
●●●

Batteries / Cables - REAR
ELECTRICAL, STARTING &
CHARGING SYSTEM
●●●

Lighting - REAR ELECTRICAL, 3
STARTING & CHARGING SYSTEM
●●●

Pre-Heater - REAR ELECTRICAL,
STARTING & CHARGING SYSTEM
●●●

Starter - REAR ELECTRICAL,
STARTING & CHARGING SYSTEM
●●●

Wiring - REAR ELECTRICAL,
STARTING & CHARGING SYSTEM
●●●

Ether Aid - REAR ELECTRICAL,
STARTING & CHARGING SYSTEM
YES

FRONT TRANSMISSION

Case - FRONT TRANSMISSION
●●●

Controls - FRONT
TRANSMISSION
●●●

Cooler - FRONT TRANSMISSION
●●●

Lines / Fittings - FRONT
TRANSMISSION
●●●

Operating Condition - FRONT
TRANSMISSION
●●●

Pump - FRONT TRANSMISSION
●●●

Retarder - FRONT
TRANSMISSION
●●●

Seals - FRONT TRANSMISSION
●●●

Torque Converter - FRONT
TRANSMISSION
●●●

Transmission - Forward Shifts -
FRONT TRANSMISSION
●●●

Transmission - Reverse Shifts -
FRONT TRANSMISSION
●●●

Universal Joints - FRONT
TRANSMISSION
●●●

Leaks - FRONT TRANSMISSION
NO

REAR TRANSMISSION

Case - REAR TRANSMISSION <div><div></div><div></div><div></div></div>	Controls - REAR TRANSMISSION <div><div></div><div></div><div></div></div>	Cooler - REAR TRANSMISSION <div><div></div><div></div><div></div></div>
Lines / Fittings - REAR TRANSMISSION <div><div></div><div></div><div></div></div>	Operating Condition - REAR TRANSMISSION <div><div></div><div></div><div></div></div>	Pump - REAR TRANSMISSION <div><div></div><div></div><div></div></div>
Retarder - REAR TRANSMISSION <div><div></div><div></div><div></div></div>	Seals - REAR TRANSMISSION <div><div></div><div></div><div></div></div>	Temp / Pressure Gauges - REAR TRANSMISSION <div><div></div><div></div><div></div></div>
Transmission - Forward Shifts - REAR TRANSMISSION <div><div></div><div></div><div></div></div>	Transmission - Reverse Shifts - REAR TRANSMISSION <div><div></div><div></div><div></div></div>	Universal Joints - REAR TRANSMISSION <div><div></div><div></div><div></div></div>
Leaks - REAR TRANSMISSION NO		

STEERING

Steering Cylinder <div><div></div><div></div><div></div></div>	<div><div></div></div> 2	Steering Linkage <div><div></div><div></div><div></div></div>	Steering Valves / Pumps <div><div></div><div></div><div></div></div>
Notes - STEERING TILT STEERING COLUMN IS DAMAGED.	<div><div></div></div> 1		

BRAKE

Brake Linkage <div><div></div><div></div><div></div></div>	Control Valve <div><div></div><div></div><div></div></div>	Lines <div><div></div><div></div><div></div></div>
Operating Condition - BRAKE <div><div></div><div></div><div></div></div>	Parking Brake <div><div></div><div></div><div></div></div>	Pedal <div><div></div><div></div><div></div></div>
Pump - BRAKE <div><div></div><div></div><div></div></div>		
Leaks - BRAKE NO		

Notes - BRAKE
Low accumulator pressure code
when first started and when
brakes pressed firmly.

HYDRAULICS

Apron Cylinder ●●●	Control Linkage ●●●	Ejector Cylinder ●●●	📷3
Hose Lines ●●●	Overall Operating Condition ●●●	Pumps & Valves ●●●	
Rear Lift Cylinders ●●●	📷2		
Leaks - HYDRAULICS NO			

SCRAPER

Apron ●●●	Bail ●●●	Bowl ●● Has cracked router support. HAS SIDE BOARDS ON CAN. NON CAT	📷6
Cutting Edge ●●● Has been flipped	📷1	Ejector ●● Bent on left and right sides.	📷4
		Ejector Rollers ● Worn and cracking both upper side rollers	📷2
Floor ●●●	Moldboard / Frog ●●●		

SCRAPER HITCH/SUSPENSION AXLE

Cushion Hitch Control Valve ●●●	Cushion Hitch Cylinder ●●●	Cushion Hitch Operation ●●●	
Cushion Hitch Pump ●●●	H-Link Pins ●●● Has slight movement	📷1	Horizontal Pins ●●● Has slight movement
			📷1

Vertical Pins
●●●

Welds / Cracks
●●●

FINAL DRIVES

Differentials
●●●

Front Axle - FINAL DRIVES
●●●

Front Final Drives
●●●

Rear Axle
●●●

Rear Final Drives
●●●

Wheel Lugs & Rims
●●●

Leaks - FINAL DRIVES
NO

TIRES

	Make / Serial#	Tread Depth in 1/32"	% Life Remaining	Recapped	Tread Cuts/Chunks	Side Cuts Section
Left Front	Michelin	36	50	NO	YES	YES
Left Rear	Bridgestone	26	32	NO	YES	YES
Right Front	Michelin	35	53	NO	YES	YES
Right Rear	Bridgestone	20	28	NO	YES	YES

Average Life Remaining - TIRES
40%

Tire Size - TIRES
33.25R29

COMMENTS, MISC. REPAIRS, GENERAL REMARKS

comment 1
INSPECT

comment 2
SERVICE

MARKETING PHOTOS (31)











MODEL
NUMBER 627H

CAT® CATERPILLAR®
CAT® CATERPILLAR®



PRODUCT
IDENTIFICATION
NUMBER *CAT0627HPDBW00323*



C-13

#TNH053853 417-2691

*A4B005353 215-4427

440283

CATERPILLAR INC.
PEORIA, IL 61629
USA
MADE IN
USA

230-0000 1

LINE ITEM PHOTOS (65)

Bumper



Has dents in front bumper



Front Engine Enclose Hood / St



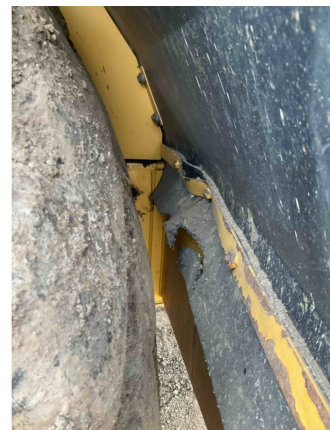
Missing hardware



Front Fenders



Has small rip in both sides.
Right front needs flap bracket
straightened and has ripped
liner in front of tire.

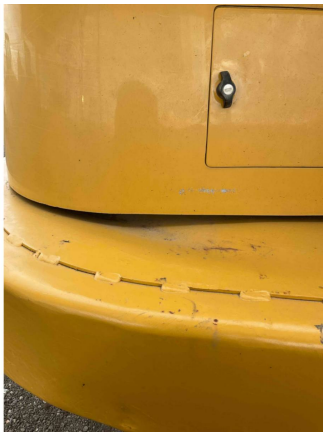




Front Sheet Metal



Dented at right front.



Grab Irons



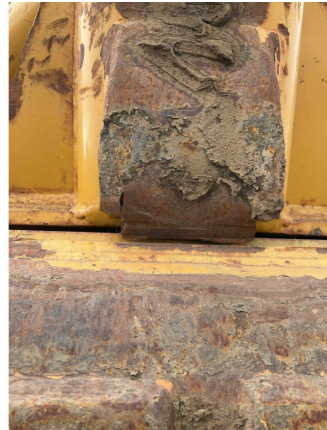
Bent at rear left and right sides
at top section



Rear Frame



Has cracks on rear hook
gussets



Rear Pre-Cleaner Bowl



Pulled off for shipping.



ROPS
YES



Air Conditioner



71 ambient temp and 49 vent
temp



Door Latches



Door seal has cuts



Heater



78 ambient temp and 109 vent temp



Seat Cushion / Arm Rest



Seat back has small hole



Windshield Wipers



Front and rear blades are dry cracking. Front washer inop. Rear washer is wo



ROPS Certification Plate
YES



Oil Leaks - REAR ENGINE
YES

Not dripping. Has residue at filter area.



Lighting - FRONT ELECTRICAL,
STARTING & CHARGING
SYSTEM
●●●





Lighting - REAR ELECTRICAL,
STARTING & CHARGING
SYSTEM



Notes - REAR COOLING SYSTEM

Radiator needs washed out. Will need to have grill unbolted and cleaned out.



Steering Cylinder



Ejector Cylinder





Rear Lift Cylinders

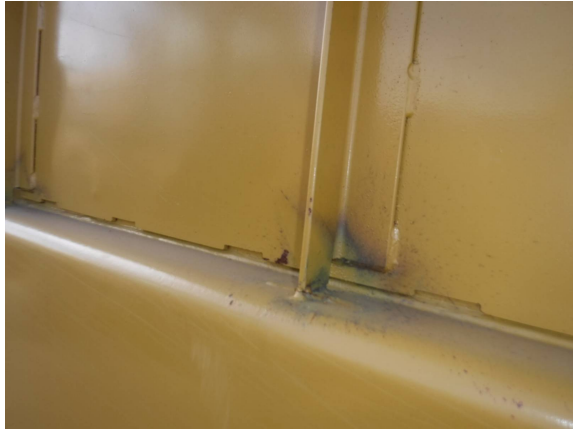


Bowl



Has cracked router support.
HAS SIDE BOARDS ON CAN.
NON CAT





Cutting Edge



Has been flipped



Ejector



Bent on left and right sides.



Ejector Rollers



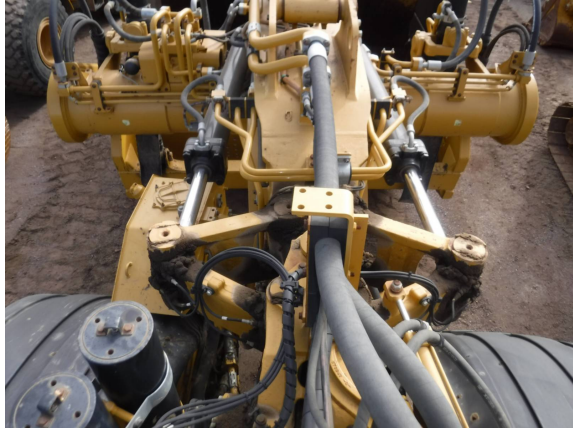
Worn and cracking both upper
side rollers



H-Link Pins



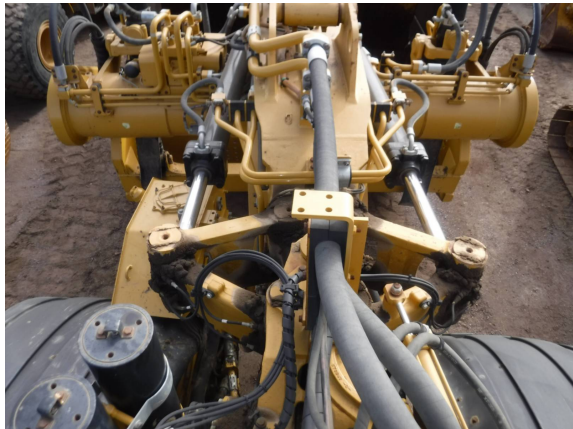
Has slight movement



Horizontal Pins



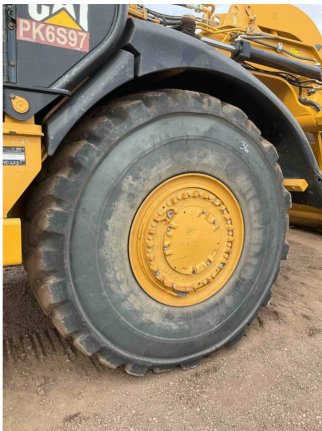




Has slight movement



Notes - STEERING

TILT STEERING COLUMN IS
DAMAGED.



	Make / Serial#	Tread Depth in 1/32"	% Life Remaining	Recapped	Tread Cuts/Chunks	Side Cuts Section
Left Front	Michelin	36	50	NO	YES	YES
						
						
<hr/>						
	Make / Serial#	Tread Depth in 1/32"	% Life Remaining	Recapped	Tread Cuts/Chunks	Side Cuts Section
Left Rear	Bridgestone	26	32	NO	YES	YES
						



	Make / Serial#	Tread Depth in 1/32"	% Life Remaining	Recapped	Tread Cuts/Chunks	Side Cuts Section
Right Front	Michelin	35	53	NO	YES	YES



	Make / Serial#	Tread Depth in 1/32"	% Life Remaining	Recapped	Tread Cuts/Chunks	Side Cuts Section
Right Rear	Bridgestone	20	28	NO	YES	YES

